

Vacant Land for Sale

Mishawaka Rd. & Concord Mall Dr.

Elkhart, Indiana 46517



COMMERCIAL REAL ESTATE SERVICES, WORLDWIDE

1.6 Acres Commercially Zoned Lot



Snapshot

Land: 1.6 Acres
Zoning: B-4 Regional Business District
Utilities: Available
Access: Fully signalized corner
List Price: \$240,000

Property Details

1.6 acres of commercially zoned land on Mishawaka Rd. just west of US 33 in Elkhart, IN. Located at a fully signalized corner just a few hundred feet from Martin's Super Market's newest Elkhart county location. The site may be developed for a broad number of commercial uses, but is ideally suited for service retail, office or medical. Located on the perimeter of the recently acquired Concord Mall, this property is adjacent to solid residential neighborhoods and utilities are available.

Table with 5 columns: 2019 DEMOGRAPHICS, 1 MILE, 3 MILE, 5 MILE, DAILY TRAFFIC COUNT. Rows include POPULATION, NUMBER OF HOUSEHOLDS, and MEDIAN HOUSEHOLD INCOME.

4100 Edison Lakes Parkway, Suite 350
Mishawaka, Indiana
574.271.4060
574.271.4292 Fax
www.cressy.com

A Global Division of Cressy Commercial Real Estate

TIM MEHALL
Vice President Retail Services, Principal
574.485.1516
tmehall@cressy.com

RYAN GABLEMAN, CCIM/SIOR
Senior Broker, Principal
574.485.1502
rgableman@cressy.com

Information furnished regarding property for sale, rental or financing is from sources deemed reliable. But no warranty or representation is made as to the accuracy thereof and same is submitted subject to errors, omissions, change of price, rental or other conditions, prior sale, leased, financing or withdrawal without notice. No liability of any kind is to be imposed on the broker herein.

Vacant Land for Sale

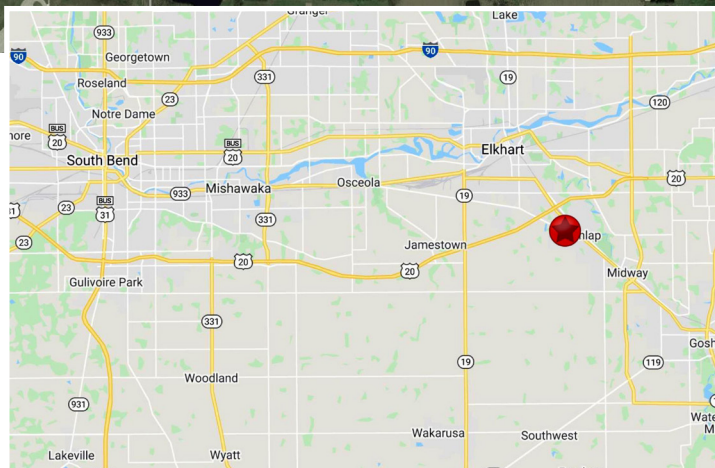
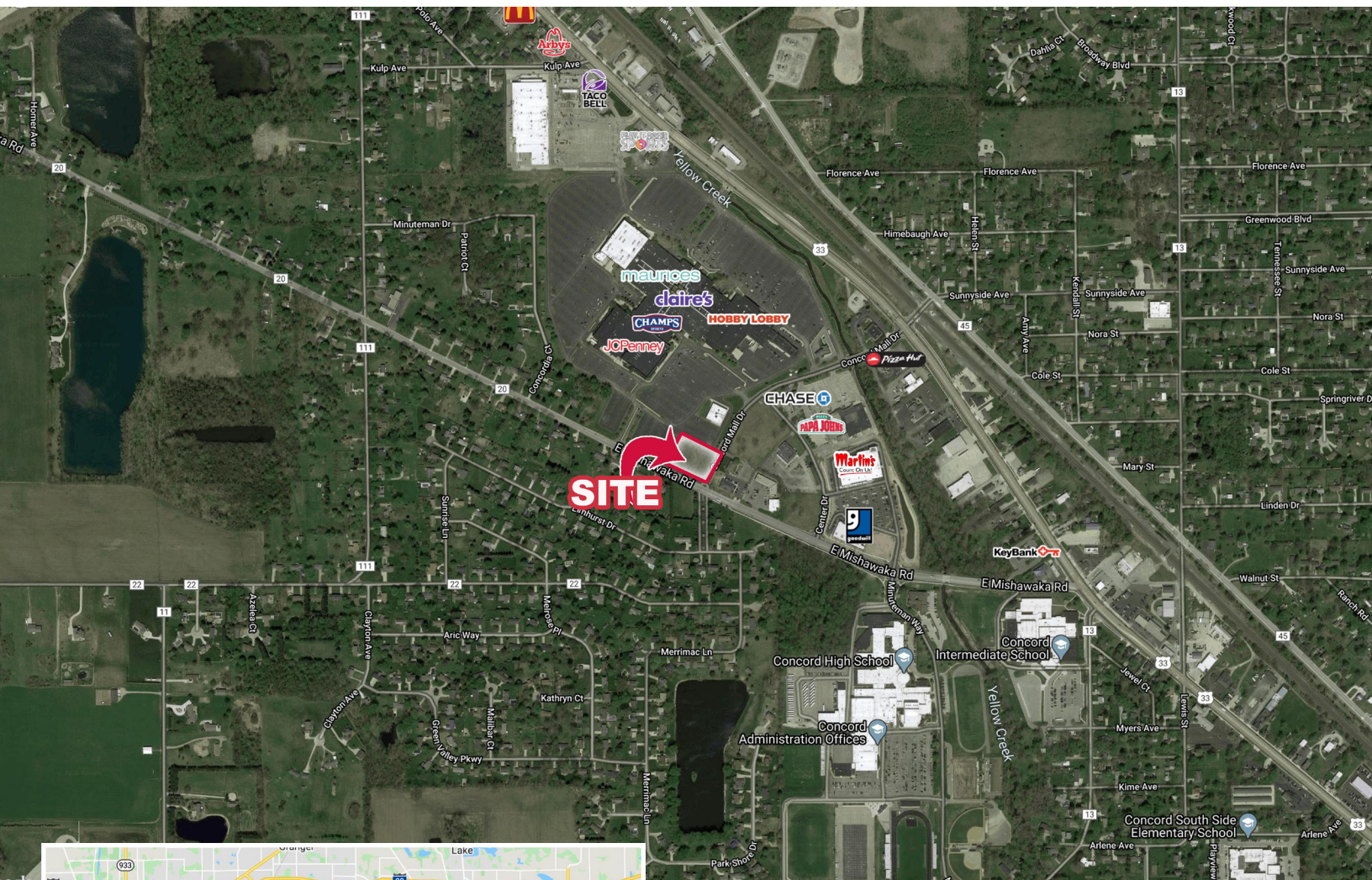
Mishawaka Rd. & Concord Mall Dr.

Elkhart, Indiana 46517

NAI Cressy

COMMERCIAL REAL ESTATE SERVICES, WORLDWIDE

Located on the Corner of Mishawaka Rd. & Concord Mall Dr.



Location

Situated at the corner of Mishawaka Road & Concord Mall Drive in Elkhart, IN. Located on the perimeter of the recently acquired Concord Mall, this property is adjacent to solid residential neighborhoods and utilities are available.

4100 Edison Lakes Parkway, Suite 350
Mishawaka, Indiana
574.271.4060
574.271.4292 Fax
www.cressy.com

A Global Division of Cressy Commercial Real Estate

TIM MEHALL
Vice President Retail Services, Principal
574.485.1516
tmehall@cressy.com

RYAN GABLEMAN, CCIM/SIOR
Senior Broker, Principal
574.485.1502
rgableman@cressy.com

Information furnished regarding property for sale, rental or financing is from sources deemed reliable. But no warranty or representation is made as to the accuracy thereof and same is submitted subject to errors, omissions, change of price, rental or other conditions, prior sale, leased, financing or withdrawal without notice. No liability of any kind is to be imposed on the broker herein.