

**847 Parchment Dr SE
Grand Rapids, Michigan 49546**

Property Highlights

- Two (2) Small Medical Suites Available
- Suite Sizes Range From 847 - 1,100 SF
- Monument Signage Available
- Ample On-Site Parking
- Conveniently Located Near Cascade Rd / I-96 Interchange



For More Information

Jason Makowski, SIOR

O: 616 575 7034 | C: 616 262 8532
jasonm@naiwwm.com

Mary Anne Wisinski-Rosely, SIOR, CCIM

O: 616 575 7047 | C: 616 450 7307
mawr@naiwwm.com

Property Overview

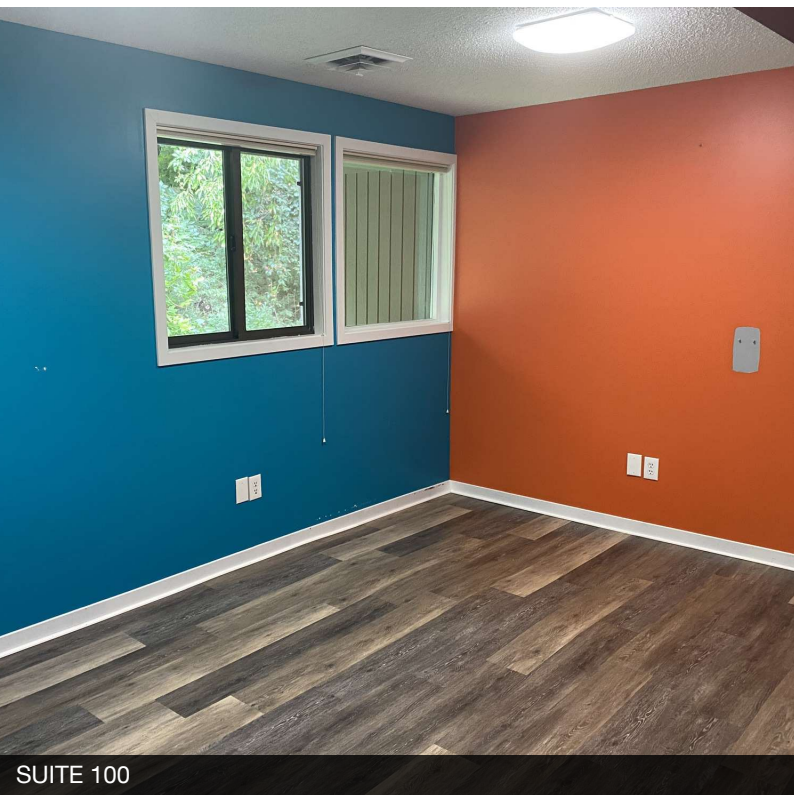
847 Parchment Dr SE
Grand Rapids, MI 49546

Property Overview

Two (2) small medical suites available within this well maintained medical office building. Suite sizes range from 847 to 1,100 SF. Building conveniently located within close proximity to the Cascade Rd/I-96 interchange. Monument signage available. Ample on-site parking.

Property Information

Location:	Kenmoor and Forest Hill Avenue
Total Building Size:	15,256 SF
Year Built/Renovated:	1979/2022
Acreage:	2.49 Acres
Signage:	Monument
Parking:	Surface/On-Site 70 Spaces
Zoning:	C-2
Municipality:	Grand Rapids Township
PPN:	41-14-36-401-018
Building Class:	B



Lease Overview

847 Parchment Dr SE
Grand Rapids, MI 49546

Lease Information

Lease Type:	Modified Gross
Terms:	36 - 60 Months
Tenant Provides:	Janitorial, Phone, Electric, Gas/Heat
Landlord Provides:	Air Conditioning, Insurance, Refuse Removal, Sewer, Snow Removal, Taxes, Water
Renewal Option:	Yes
Possession:	At Lease Execution

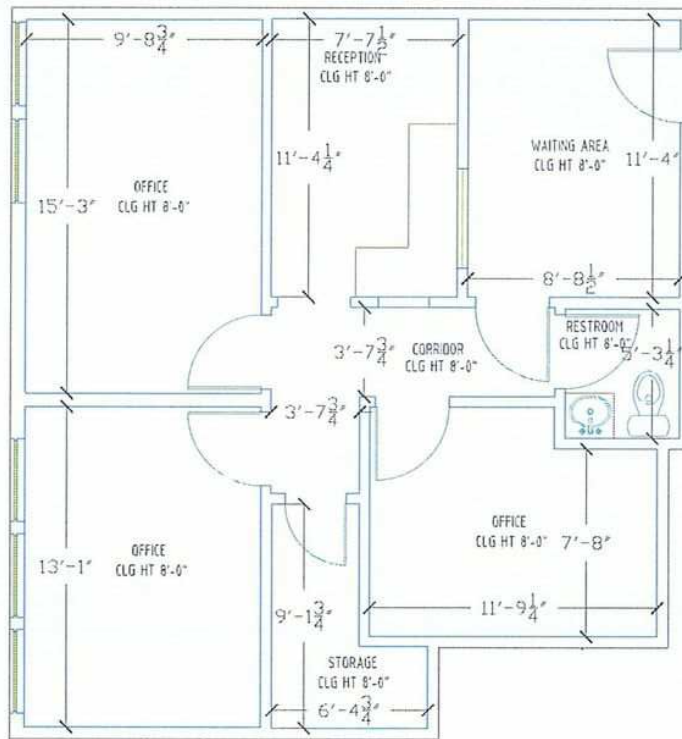
Availability

SUITE	RENTABLE SF	RATE / SF / YR	MONTHLY RENT
100	847 SF	\$18.75	\$1,323.44
130	1,100 SF	\$18.75	\$1,718.75



Floor Plans - Suite 100

847 Parchment Dr SE
Grand Rapids, MI 49546



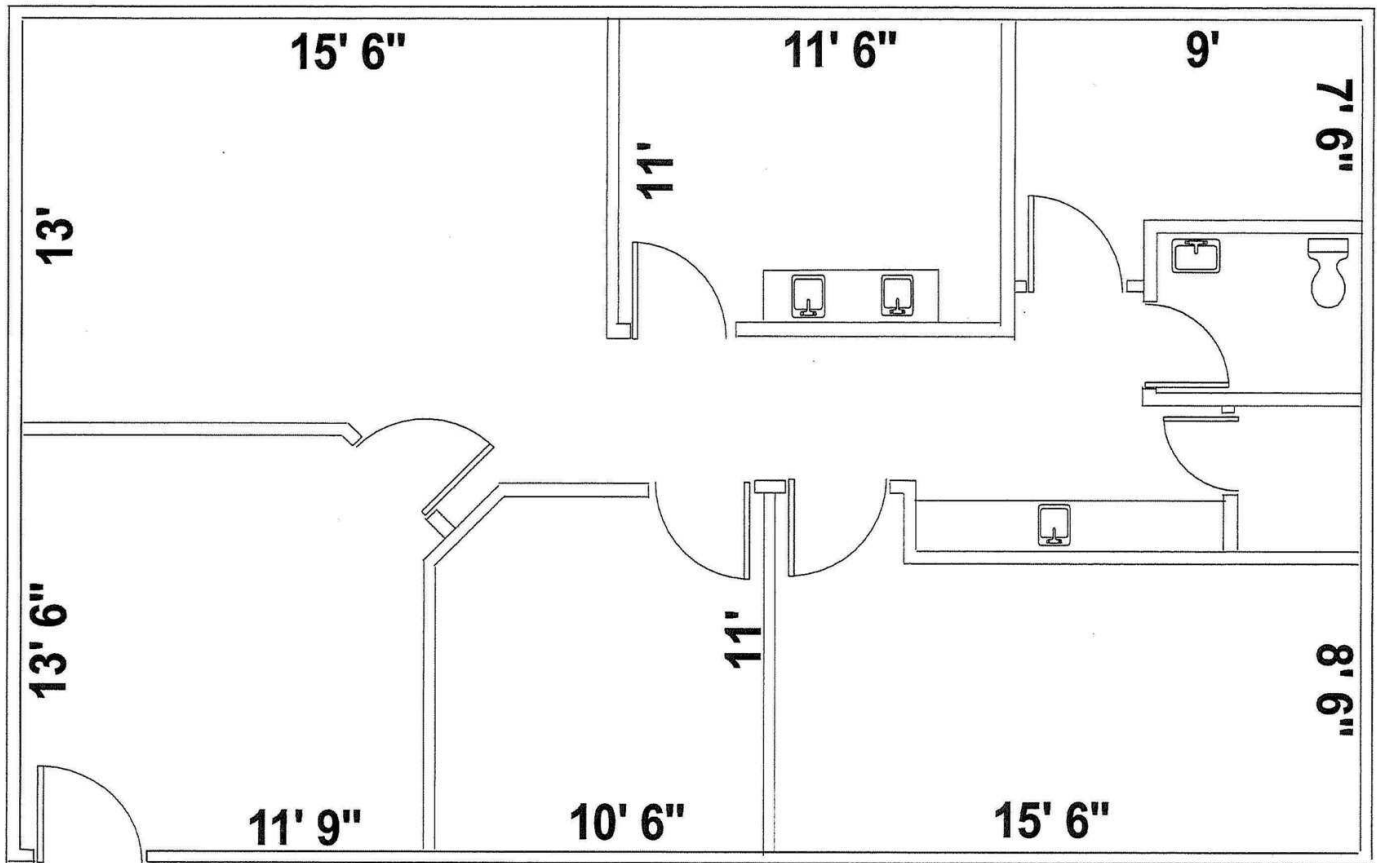
SQ/FT = 847

SUITE 100

SCALE
1/8" = 1'-0"

Floor Plan - Suite 130

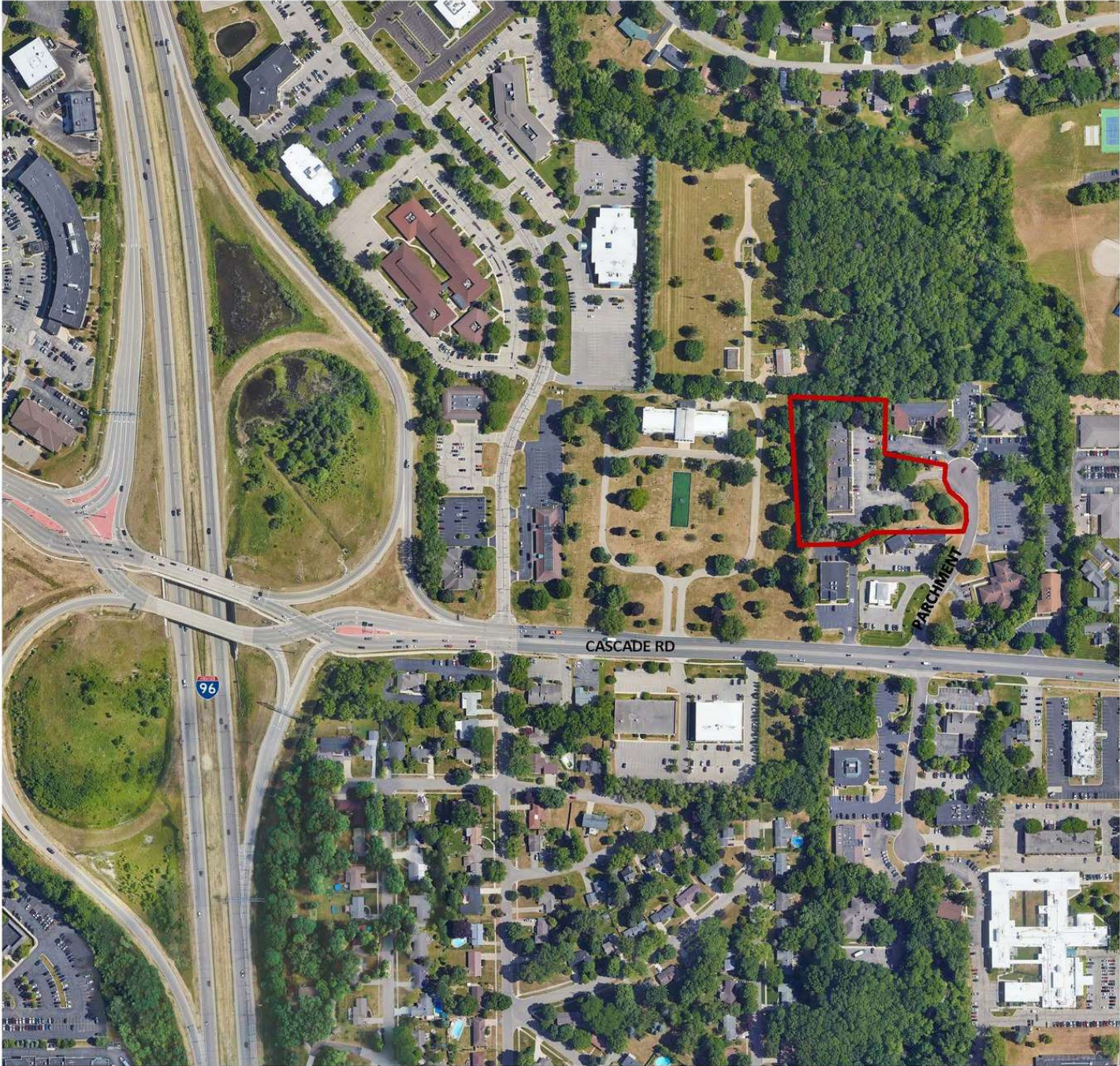
847 Parchment Dr SE
Grand Rapids, MI 49546



847 Parchment
Suite 130
1,100 sq ft

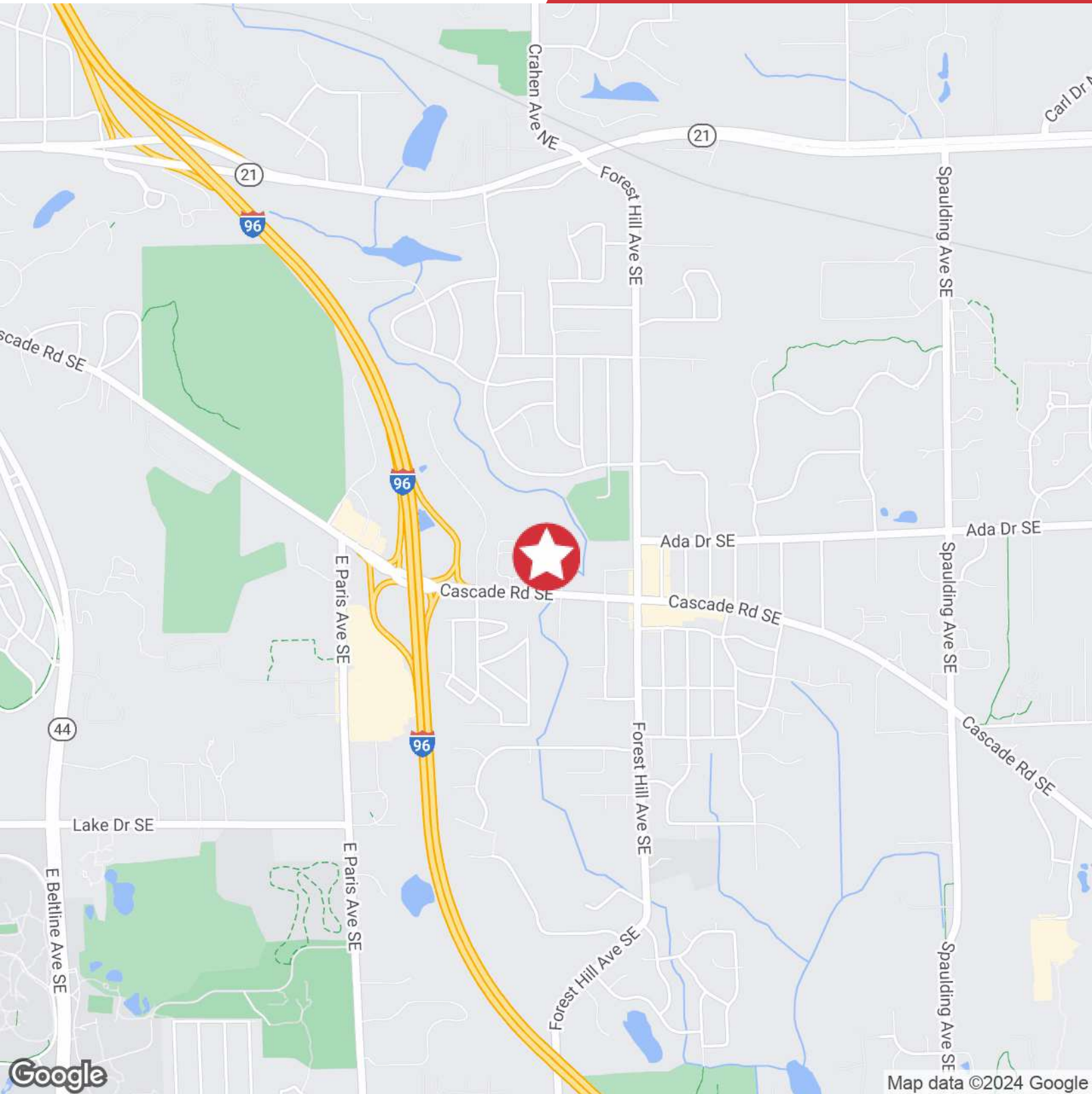
Parcel

847 Parchment Dr SE
Grand Rapids, MI 49546



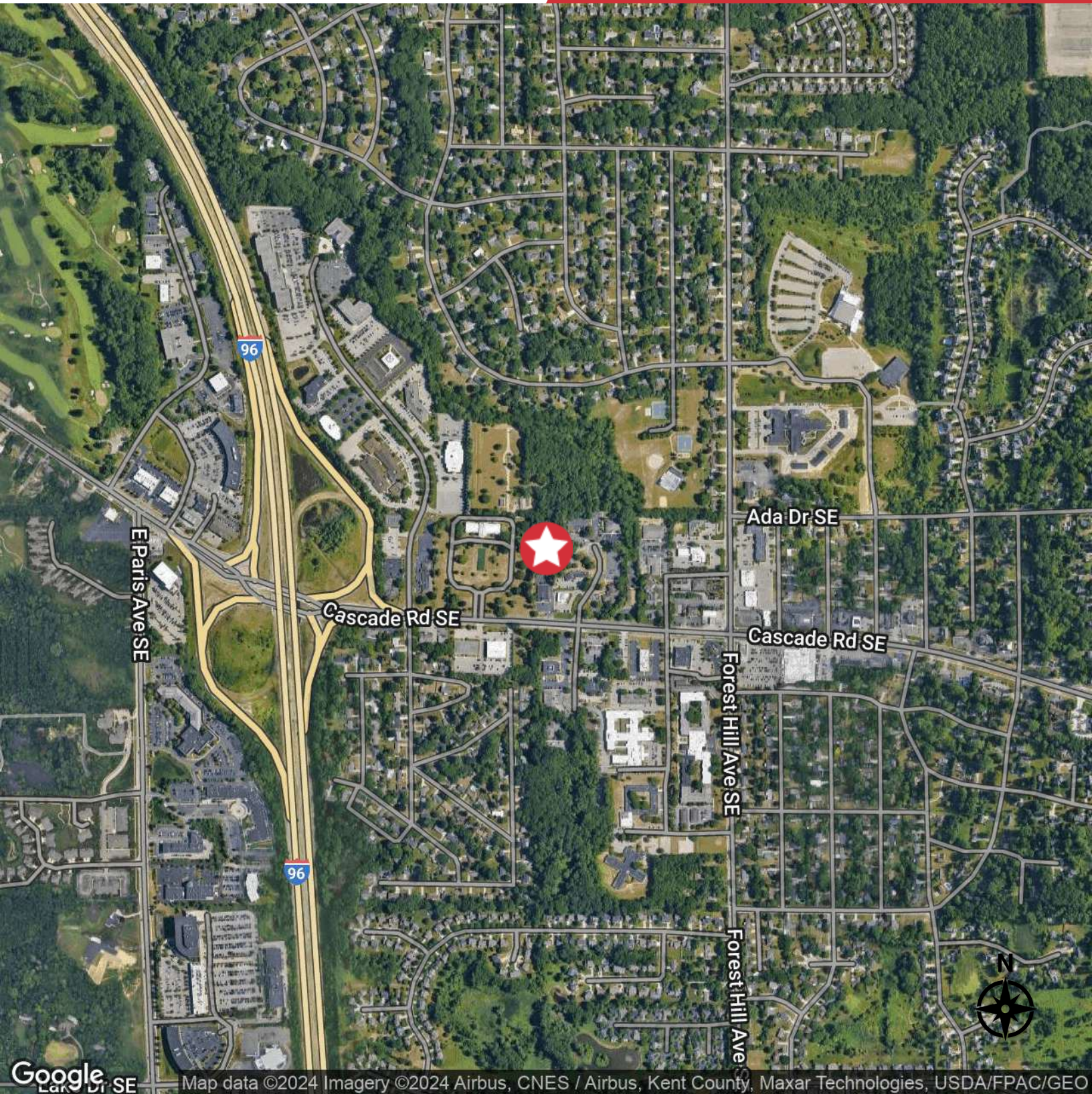
Location Map

847 Parchment Dr SE
Grand Rapids, MI 49546



Aerial Map

847 Parchment Dr SE
Grand Rapids, MI 49546



Google Earth SE Map data ©2024 Imagery ©2024 Airbus, CNES / Airbus, Kent County, Maxar Technologies, USDA/FPAC/GEO