



**1000 EAST PARIS AVE SE  
Grand Rapids, Michigan 49546**

**Property Overview**

This is an approximately 110,000 SF multi-tenant medical center located on Grand Rapids' southeast side. The property has undergone a complete common area renovation and all new signage.

It is strategically located on East Paris Avenue just south of the Cascade Road/I-96 interchange. In addition to its proximity to I-96, it is located in an area with a high concentration of medical uses.



For More Information

**Mary Anne Wisinski-Rosely, SIOR, CCIM**

O: 616 575 7047 | C: 616 450 7307  
mawr@naiwwm.com

**Jason Makowski, SIOR**

O: 616 575 7034 | C: 616 262 8532  
jasonm@naiwwm.com

# Asset Overview

1000 EAST PARIS AVE SE  
Grand Rapids, Michigan 49546

## 1000 East Paris Ave SE

<b>Location:</b>	I-96 to Cascade Road, W to E Paris, S to property
<b>Total Building Size:</b>	110,000 SF
<b>HVAC:</b>	Gas/Forced Air
<b>Air Conditioning:</b>	Yes
<b>Signage:</b>	Yes
<b>Parking:</b>	On-Site - Ample Spaces
<b>Municipality:</b>	Grand Rapids Township
<b>PPN:</b>	41-14-36-351-011 / 012
<b>Zoning:</b>	C-1



# Lease Overview

1000 EAST PARIS AVE SE  
Grand Rapids, Michigan 49546

## Lease Information

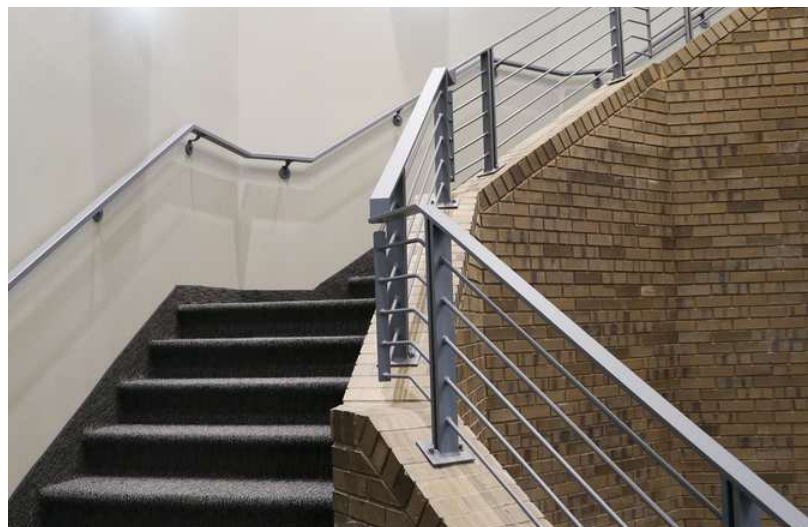
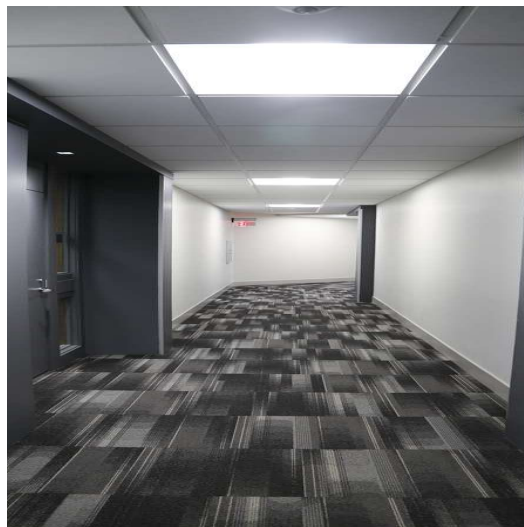
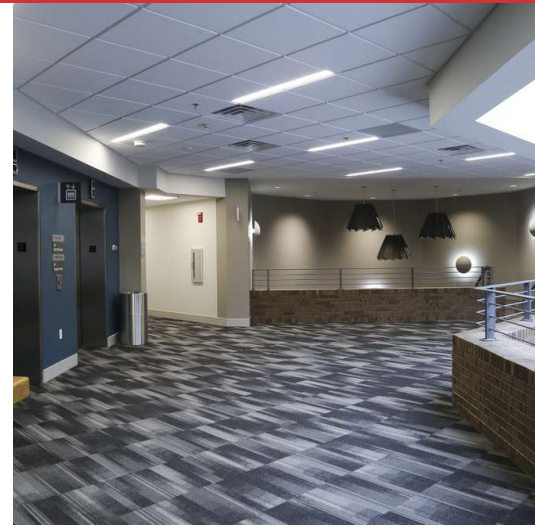
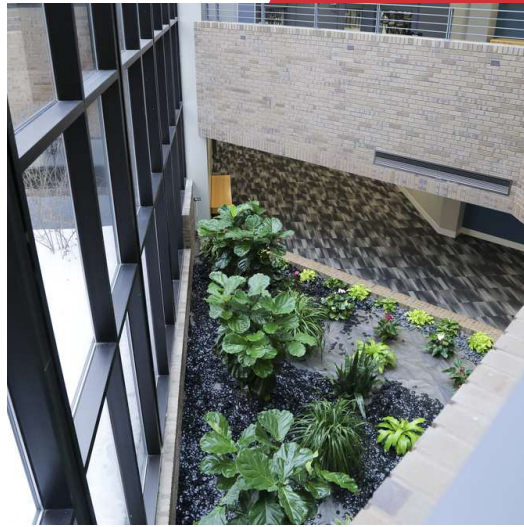
<b>Lease Type:</b>	NNN
<b>Terms:</b>	60 - 120 Months
<b>Tenant Provides:</b>	Taxes, Insurance, Water, Sewer, Electric, Air Conditioning, Gas/ Heat, Snow Removal, Janitorial, Refuse Removal, Phone
<b>Landlord Provides:</b>	Roof & Structural
<b>Renewal Option:</b>	Yes
<b>Current Build Out:</b>	Varies by suite
<b>Municipality:</b>	Grand Rapids Township
<b>PPN:</b>	41-14-36-351-011 and 41-14-36-351-012
<b>Possession:</b>	At lease commencement

## Availability

SUITE	RENTABLE SF	RATE / SF / YR	MONTHLY RENT	CAM / MONTH \$8.96/SF*	TOTAL MONTHLY RENT
110	1,638 SF	\$14.50	\$1,979.25	\$1,223.04	\$3,202.29
113	1,857 SF	\$14.50	\$2,243.88	\$1,386.56	\$3,630.44
222	1,814 SF	\$14.50	\$2,191.92	\$1,354.45	\$3,546.37
223 & 225	2,280 SF	\$14.50	\$2,755.00	\$1,702.40	\$4,457.40
241	2,058 SF	\$14.50	\$2,486.75	\$1,536.64	\$4,023.39

# Photos

1000 EAST PARIS AVE SE  
Grand Rapids, Michigan 49546



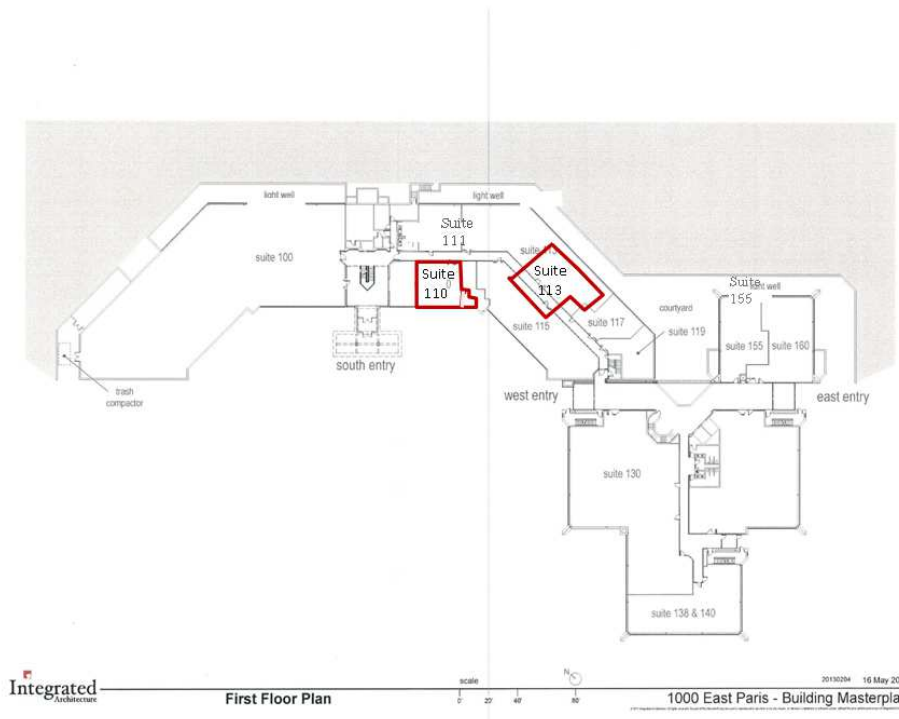
# Exterior Signage

1000 EAST PARIS AVE SE  
Grand Rapids, Michigan 49546

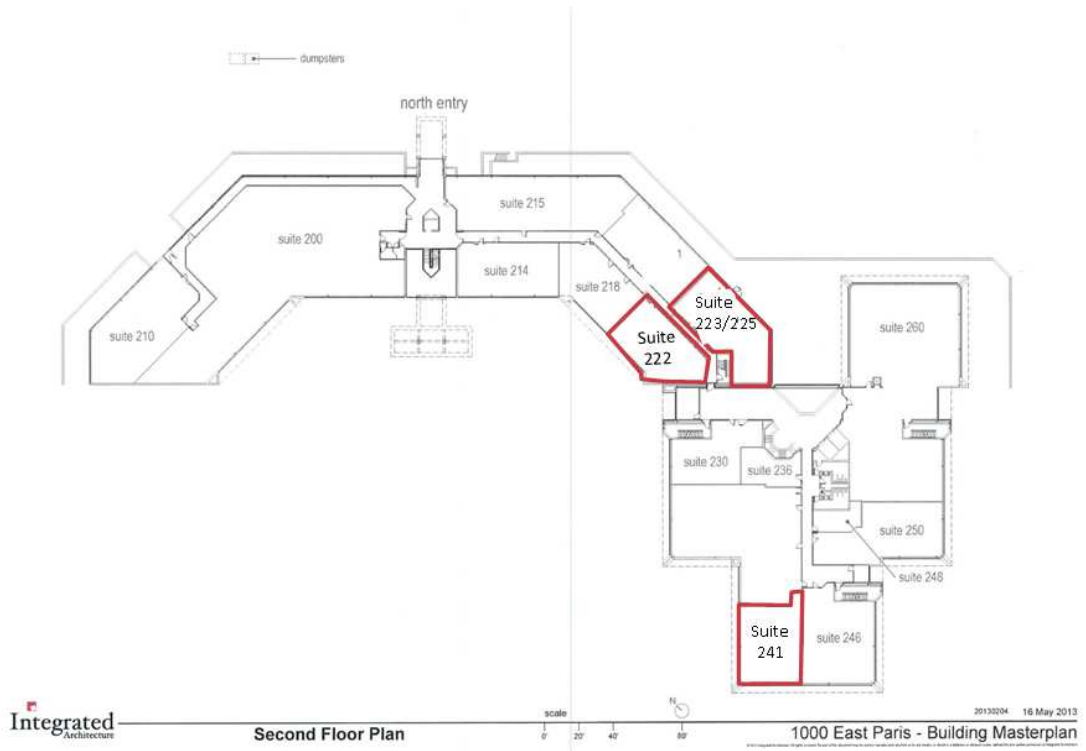


# Floor Plans

1000 EAST PARIS AVE SE  
Grand Rapids, Michigan 49546



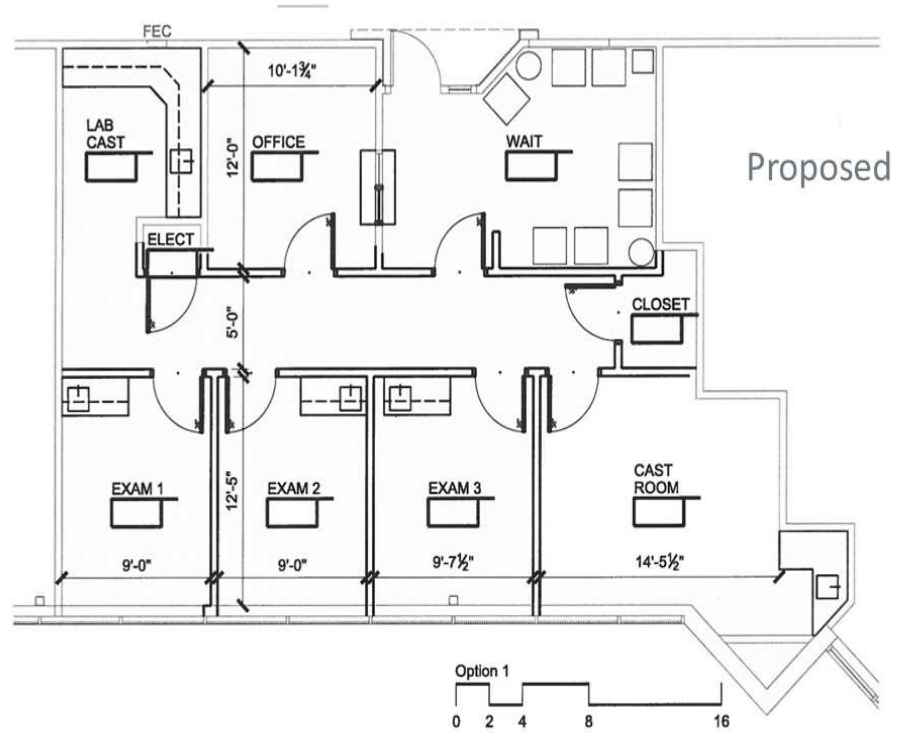
## FIRST FLOOR



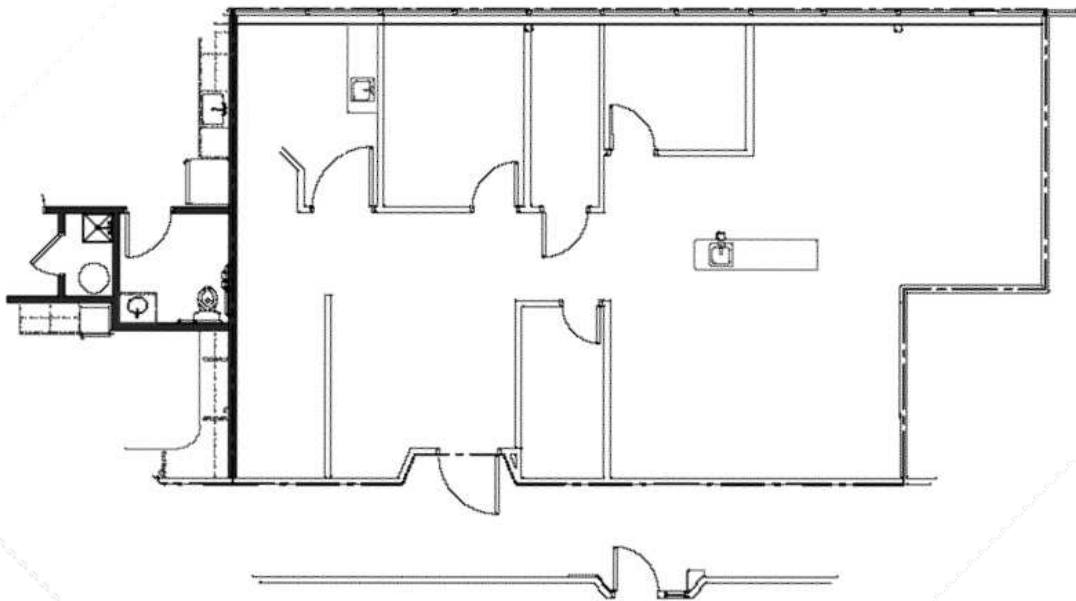
## SECOND FLOOR

# Floor Plans

1000 EAST PARIS AVE SE  
Grand Rapids, Michigan 49546



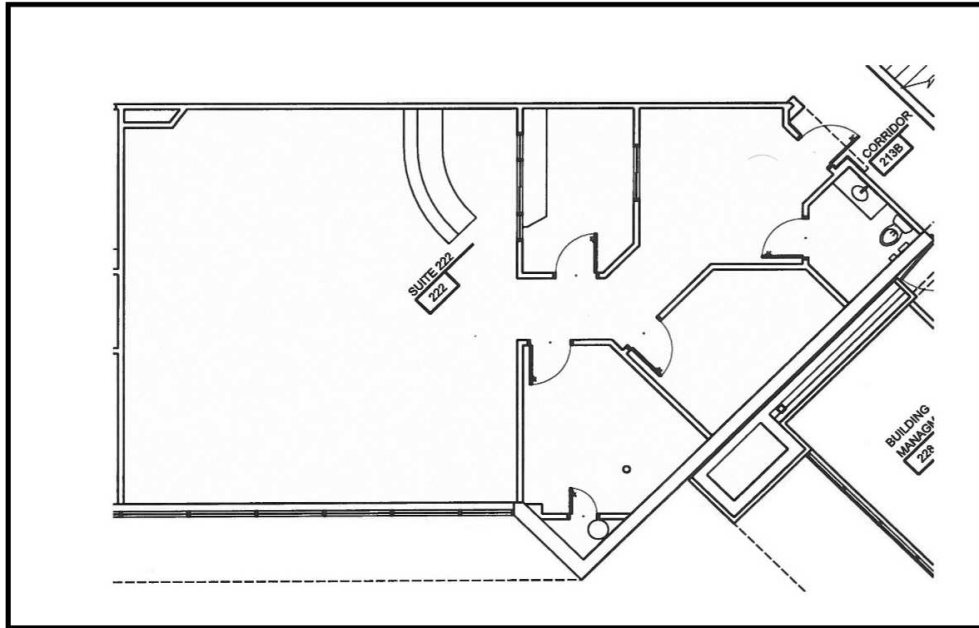
SUITE 110 - 1,638 SF



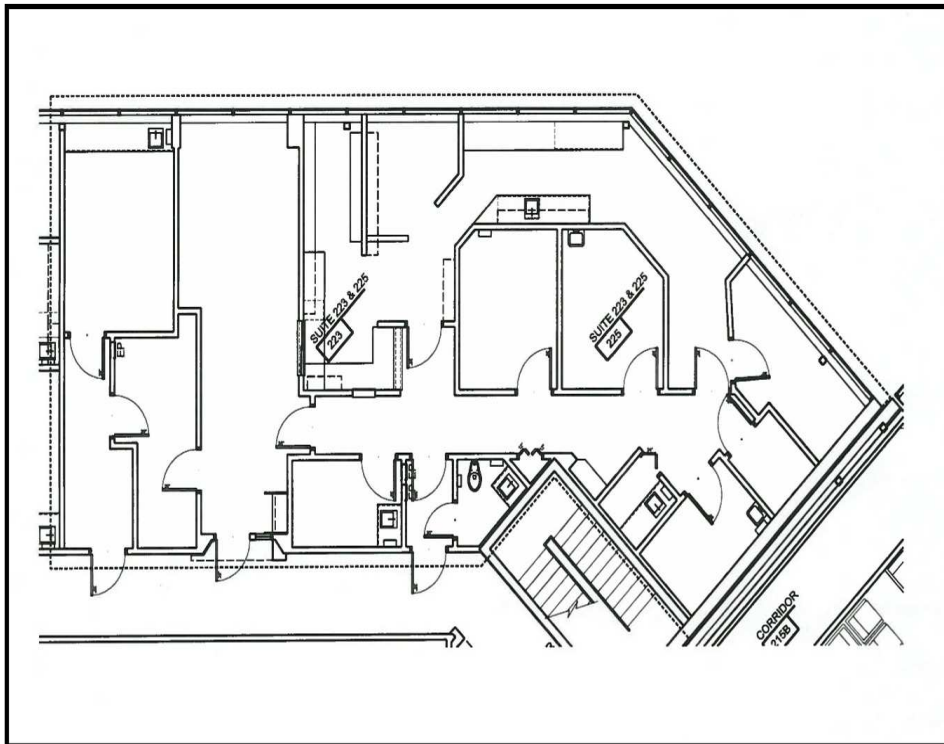
SUITE 113 - 1,857 SF

# Floor Plans

1000 EAST PARIS AVE SE  
Grand Rapids, Michigan 49546



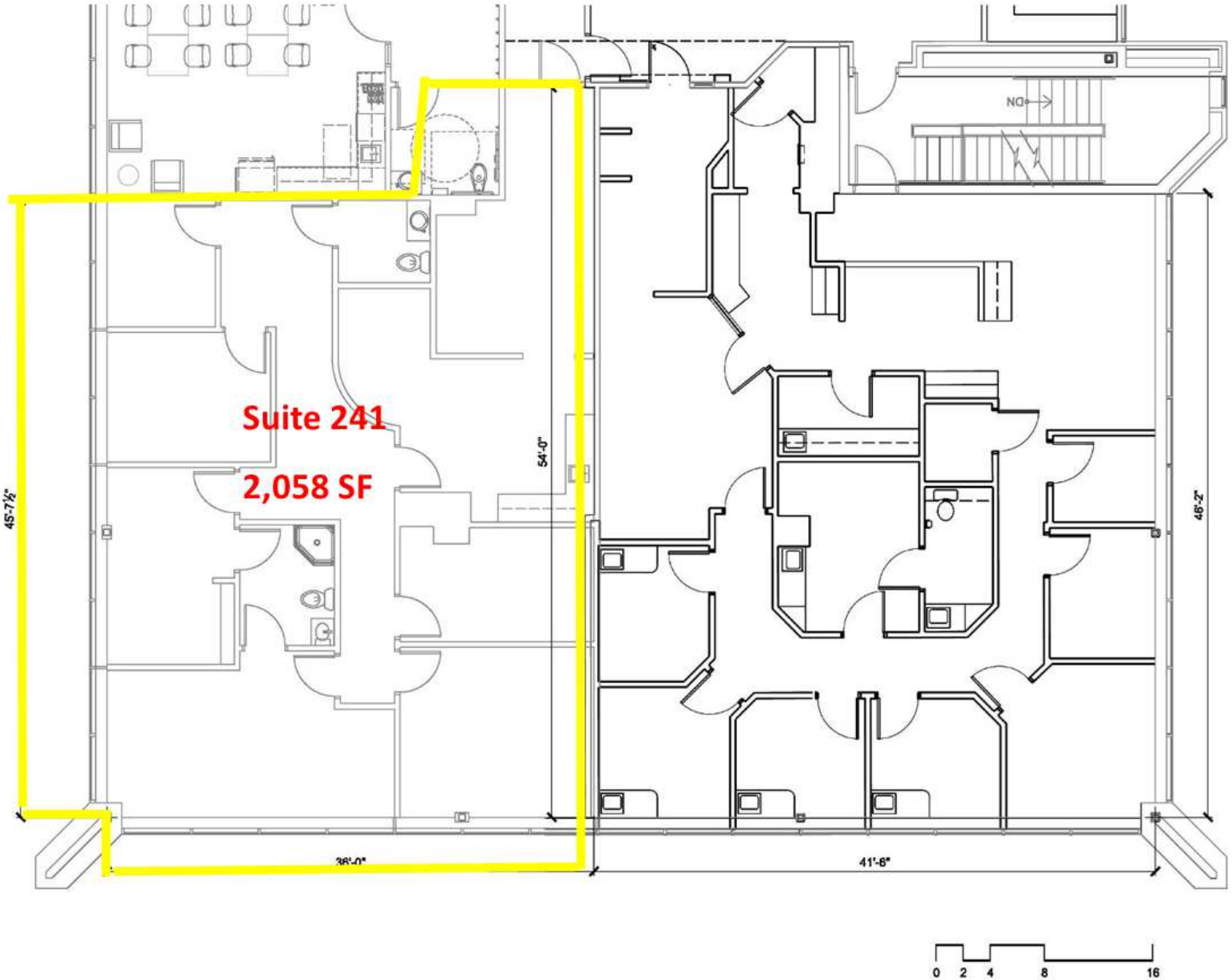
SUITE 222 - 1,814 SF



SUITE 223/225 - 2,280 SF

# Floor Plans

1000 EAST PARIS AVE SE  
Grand Rapids, Michigan 49546

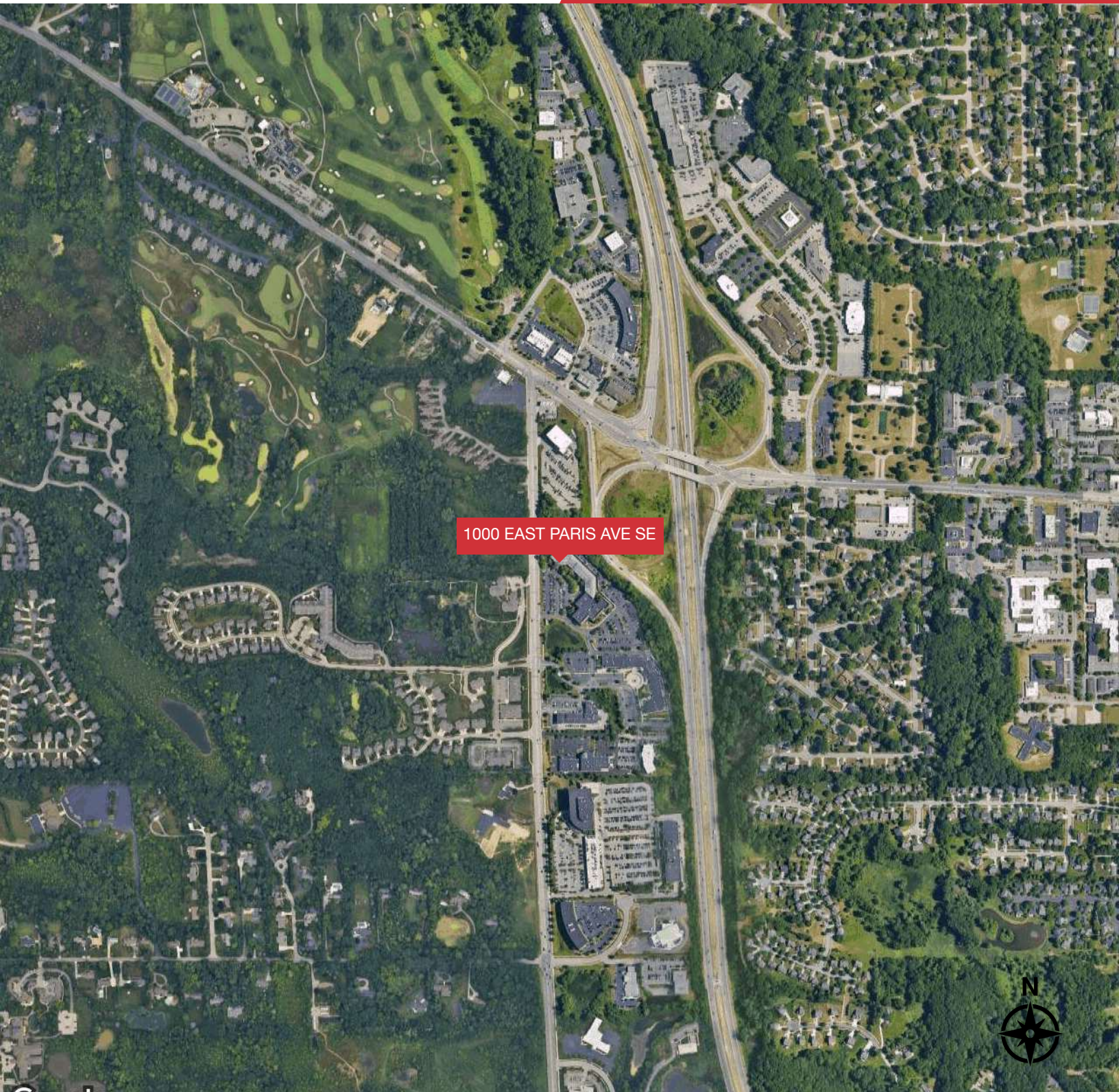


SUITE 241 - 2,058 SF



# Aerial Map

1000 EAST PARIS AVE SE  
Grand Rapids, Michigan 49546



1000 EAST PARIS AVE SE



Google

Imagery ©2024 Airbus, CNES / Airbus, Kent County, Maxar Technologies, USDA/FPAC/GEO

# Location Map

1000 EAST PARIS AVE SE  
Grand Rapids, Michigan 49546

