

COMMERCIAL WAY LAND

3606 Commercial Way | Spring Hill, FL 34606

Land for Sale



LQ Commercial
REAL ESTATE SERVICES

LOCRE.COM



\$1,500,000
PRICE

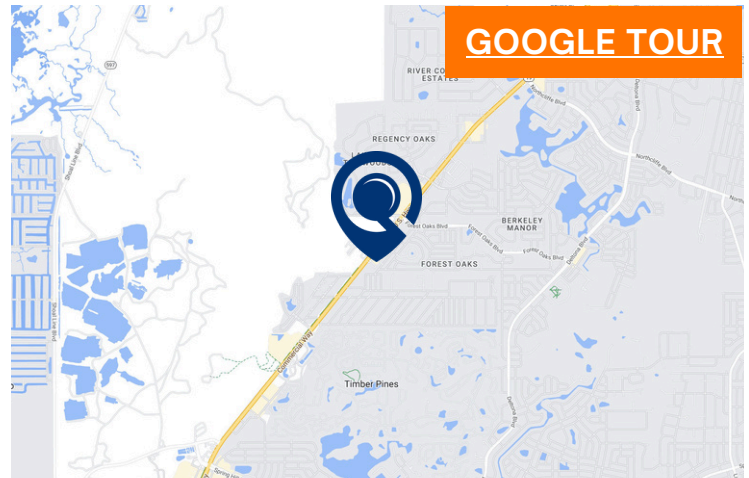


4.20 AC
SIZE



DEVELOPMENT
OPPORTUNITY

- 4.20 AC parcel across the new 72 AC mixed-use development project
- Commercially zoned, vacant land is nestled between dozens of nationally recognized retailers, including Walmart, Target, and Home Depot.
- Hernando county has a uniquely high growth rate projected for the next 5 years.
- Rare land opportunity priced below market value.
- Site is located along US Hwy 19/Commercial Way, Spring Hill's busiest, retail corridor.



[PROPERTIES.LOCRE.COM/COMMERCIAL-WAY-LAND](https://properties.locre.com/commercial-way-land)



5-MILE POPULATION

91,822



5-MILE INCOME

\$80,351



5-MILE EMPLOYEES

19,632



5601 Mariner Street #220
Tampa, FL 33609

LOCRE.COM

Eli Dioso
Associate

D: 813.999-1940

C: 727.642.3696

edioso@lqcre.com

COMMERCIAL WAY LAND

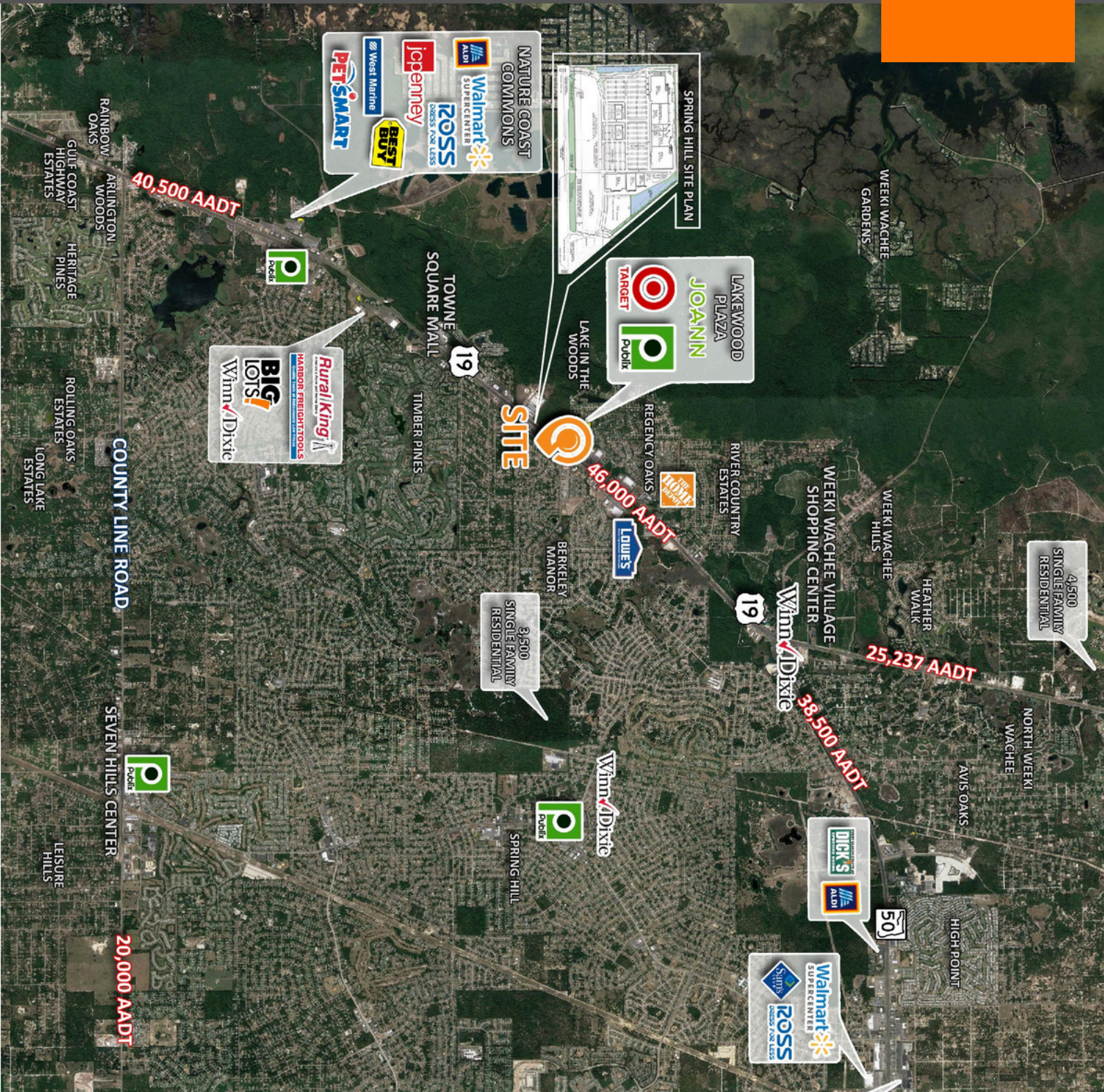
3606 Commercial Way | Spring Hill, FL 34606

Land for Sale



LQ Commercial
REAL ESTATE SERVICES

LOCRE.COM



LQ Commercial
REAL ESTATE SERVICES

5601 Mariner Street #220
Tampa, FL 33609

LOCRE.COM

Eli Dioso
Associate

D: 813.999-1940
C: 727.642.3696

edioso@lqcre.com