



Camelback Road  
66 ADT

**Bashas'**  
Where You've Got a Friend

**Bank of America**

**Walgreens**

**AutoZone**

**Dignity Health**

**1.38 Acres  
For Sale**

**7.84 Acres  
For Sale**

**Hines  
SELF STORAGE**

**QUICK N CLEAN**  
CAR WASHING...  
FAST & EASY

**TACO BELL**

**Penny's**

CAMELBACK & DYSART

# LAND FOR SALE

SEC Camelback & Dysart Litchfield Park, AZ 85341

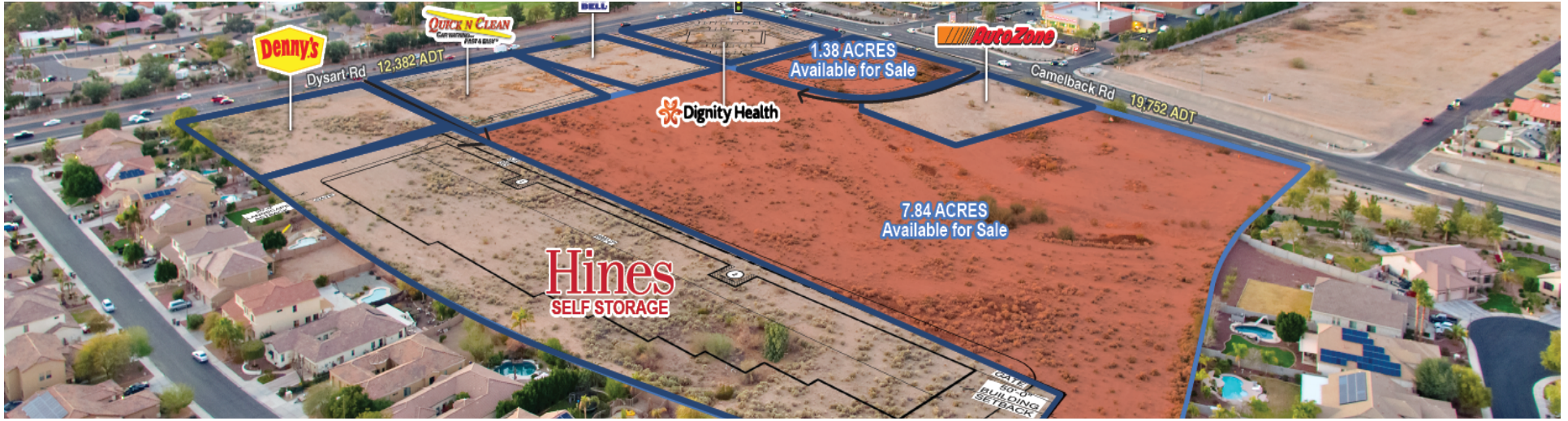
**BRIAN GAUSDEN**  
602.778.3740  
bgausden@w-retail.com

**WESTERN RETAIL ADVISORS**  
2555 E Camelback Rd, Suite 200  
Phoenix, AZ 85016  
602.778.3747 | w-retail.com



# SEC CAMELBACK & DYSART

SEC Camelback & Dysart, Litchfield Park, AZ 85341



## LOCATION DESCRIPTION

Hard corner of Dysart & Camelback

## PROPERTY HIGHLIGHTS

- Pads for Sale/Lease
- High Profile Pads at Strong Intersection
- Ideal for Gas Stations, Drive-Thru Users, Banks, Drug Stores, and Restaurants
- Across Street from Wigwam Resort
- Please Call for Pricing

## AREA CO-TENANTS

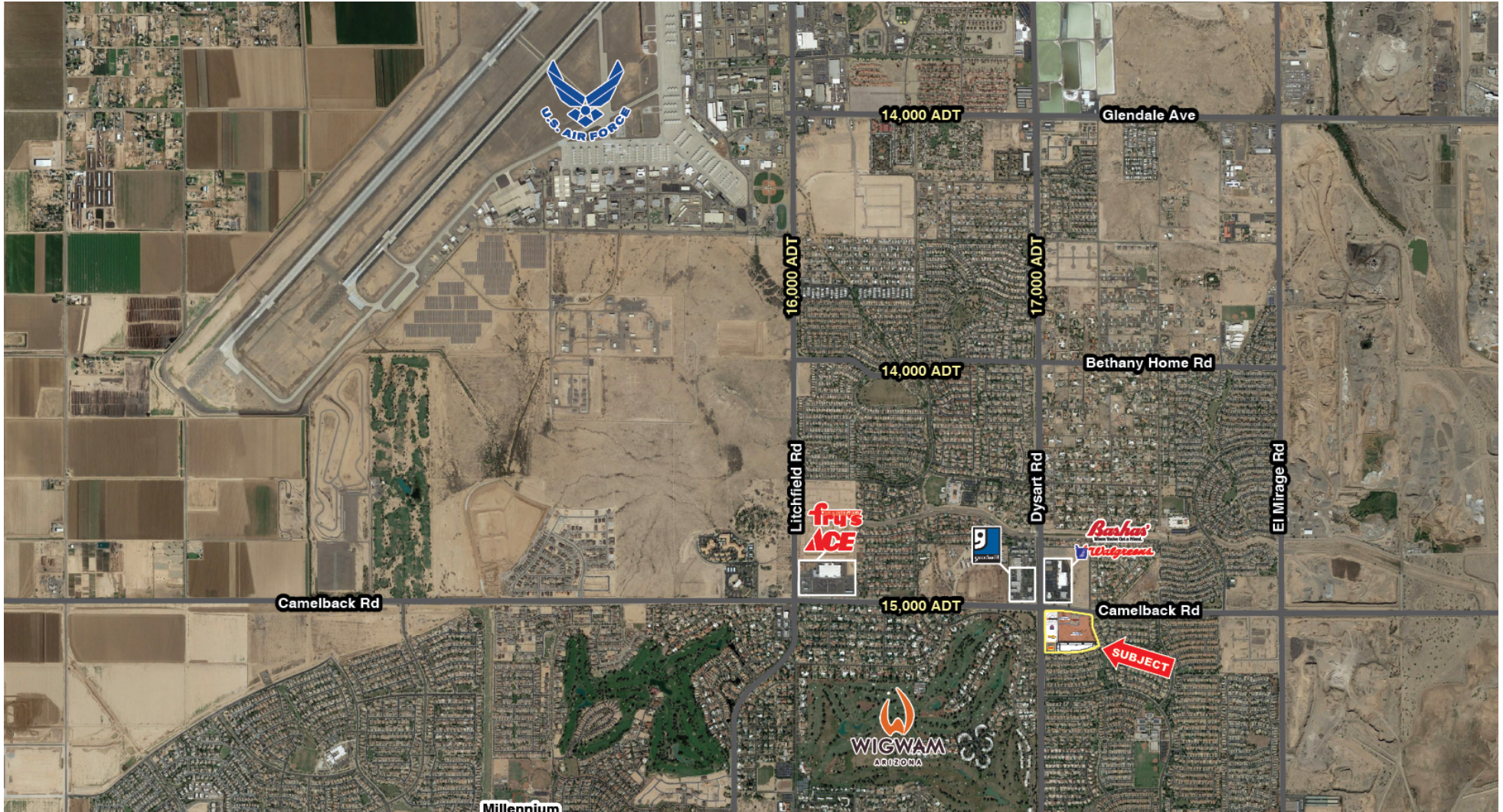


The information contained within this brochure has been obtained from sources other than Western Retail Advisors, LLC. Western Retail Advisors have not verified such information and make no guarantee, warranty, or representation about such information. It is your responsibility to independently confirm its accuracy and completeness. Any dimensions, specifications, floor plans, and information may not be accurate and should be verified by you prior to the lease or purchase of the property.



# SEC CAMELBACK & DYSART

SEC Camelback & Dysart Litchfield Park, AZ 85341



The information contained within this brochure has been obtained from sources other than Western Retail Advisors, LLC. Western Retail Advisors have not verified such information and make no guarantee, warranty, or representation about such information. It is your responsibility to independently confirm its accuracy and completeness. Any dimensions, specifications, floor plans, and information may not be accurate and should be verified by you prior to the lease or purchase of the property.



# SEC CAMELBACK & DYSART

SEC Camelback & Dysart Litchfield Park, AZ 85341



The information contained within this brochure has been obtained from sources other than Western Retail Advisors, LLC. Western Retail Advisors have not verified such information and make no guarantee, warranty, or representation about such information. It is your responsibility to independently confirm its accuracy and completeness. Any dimensions, specifications, floor plans, and information may not be accurate and should be verified by you prior to the lease or purchase of the property.



# SEC CAMELBACK & DYSART

SEC Camelback & Dysart Litchfield Park, AZ 85341

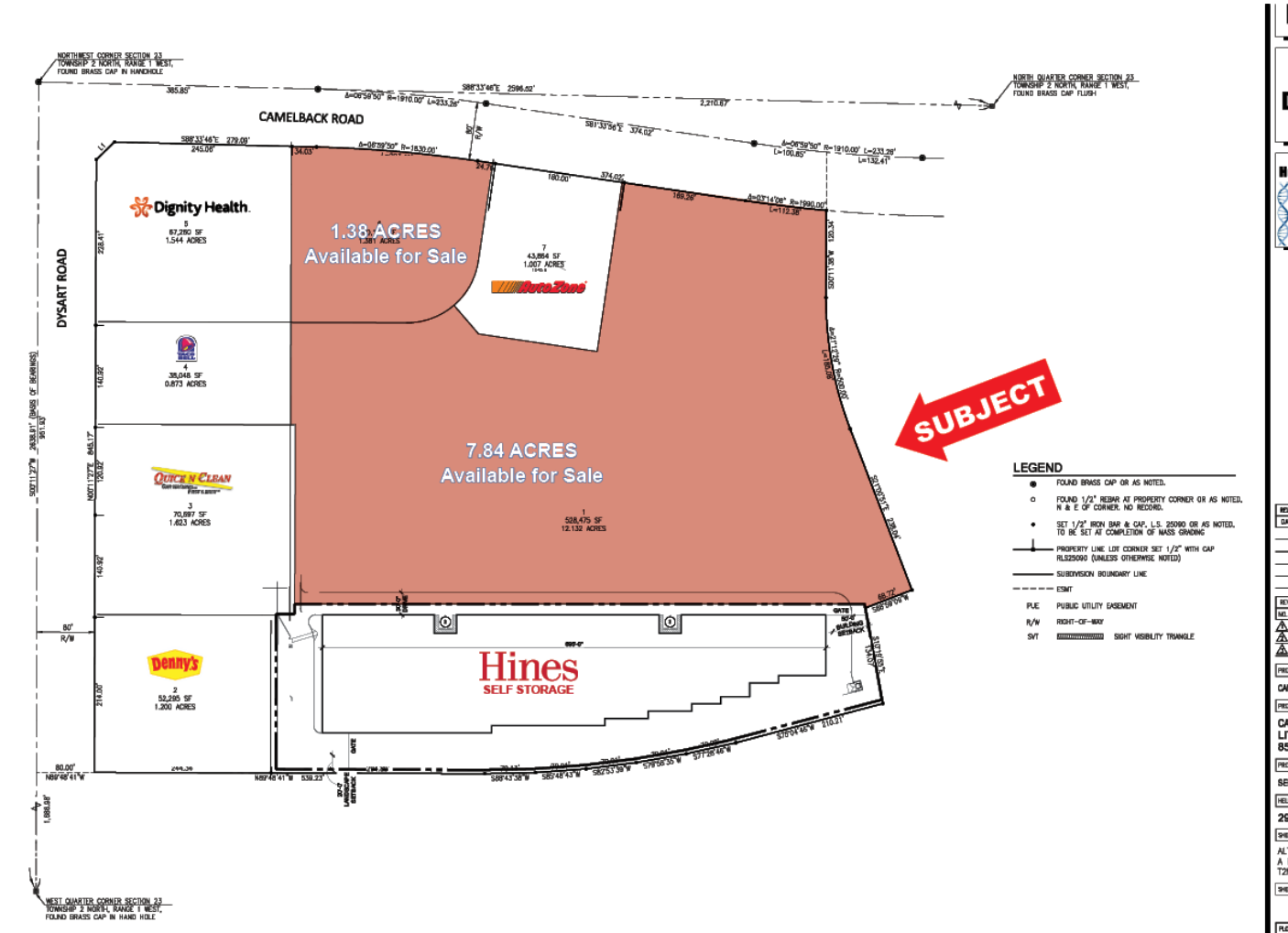


The information contained within this brochure has been obtained from sources other than Western Retail Advisors, LLC. Western Retail Advisors have not verified such information and make no guarantee, warranty, or representation about such information. It is your responsibility to independently confirm its accuracy and completeness. Any dimensions, specifications, floor plans, and information may not be accurate and should be verified by you prior to the lease or purchase of the property.



# SEC CAMELBACK & DYSART

SEC Camelback & Dysart Litchfield Park, AZ 85341



The information contained within this brochure has been obtained from sources other than Western Retail Advisors, LLC. Western Retail Advisors have not verified such information and make no guarantee, warranty, or representation about such information. It is your responsibility to independently confirm its accuracy and completeness. Any dimensions, specifications, floor plans, and information may not be accurate and should be verified by you prior to the lease or purchase of the property.



# SEC CAMELBACK & DYSART

SEC Camelback & Dysart Litchfield Park, AZ 85341



The information contained within this brochure has been obtained from sources other than Western Retail Advisors, LLC. Western Retail Advisors have not verified such information and make no guarantee, warranty, or representation about such information. It is your responsibility to independently confirm its accuracy and completeness. Any dimensions, specifications, floor plans, and information may not be accurate and should be verified by you prior to the lease or purchase of the property.



# SEC CAMELBACK & DYSART

SEC Camelback &amp; Dysart Litchfield Park, AZ 85341

<b>POPULATION SUMMARY</b>	<b>1 MILE</b>	<b>3 MILES</b>	<b>5 MILES</b>
Total Population	11,662	73,142	153,913
Total Population in 5 years	12,265	80,255	170,150
Annual Growth Rate	1.01%	1.87%	2.03%
Median Age	32.7	33.6	33.6
<b>INCOME SUMMARY</b>			
Median Household Income	\$88,287	\$79,192	\$70,384
Average Household Income	\$110,808	\$97,785	\$88,478
<b>BUSINESS SUMMARY</b>			
Total Businesses	193	1,191	3,620
Total Employees	1,782	17,008	50,495
Daytime Population	7,460	53,564	128,701
<b>POPULATION 25+ by EDUCATIONAL ATTAINMENT</b>			
Associate's Degree	9.8%	11.1%	10.2%
Bachelor's Degree	20.1%	18.4%	16.7%
Graduate / Professional Degree	16.9%	11.9%	10.2%
Percent of Population with Degrees	46.80%	41.38%	37.22%
<b>EMPLOYED POPULATION 16+ by OCCUPATION</b>			
Total	5,981	36,586	75,707
White Collar	69.7%	65.6%	62.4%
Service Industry	14.8%	17.1%	17.1%
Blue Collar	15.4%	17.3%	20.5%
<b>HOUSEHOLD SUMMARY</b>			
Households	3,437	23,593	51,885
Average Household Size	3.39	3.07	2.94
Average Family Size	3.66	3.42	3.36
Median Home Value	\$333,994	\$273,508	\$258,605

\* 2020 Demographic data derived from ESRI

The information contained within this brochure has been obtained from sources other than Western Retail Advisors, LLC. Western Retail Advisors have not verified such information and make no guarantee, warranty, or representation about such information. It is your responsibility to independently confirm its accuracy and completeness. Any dimensions, specifications, floor plans, and information may not be accurate and should be verified by you prior to the lease or purchase of the property.