



32065 CASTLE COURT
Evergreen, Colorado 80439



PROPERTY FEATURES

- Great north Evergreen location
- Well-maintained Class A building
- Common showers and lockers
- Access to walking path and Jeffco Open Space

BUILDING SPECIFICATIONS

Single Offices Available:

Suite 150 C	\$475/mo FSG
Suite 225 D	\$500/mo FSG
Suite 250 H	\$675/mo FSG

Building Size:	16,605
Year Built:	1999
Stories:	3

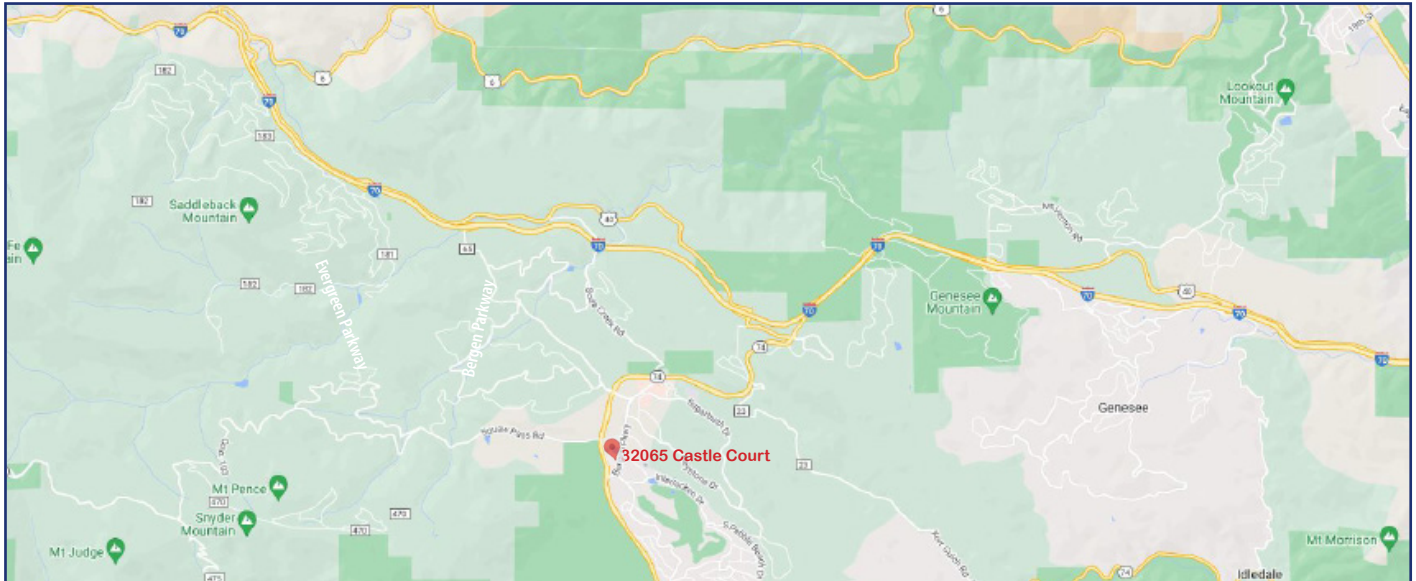
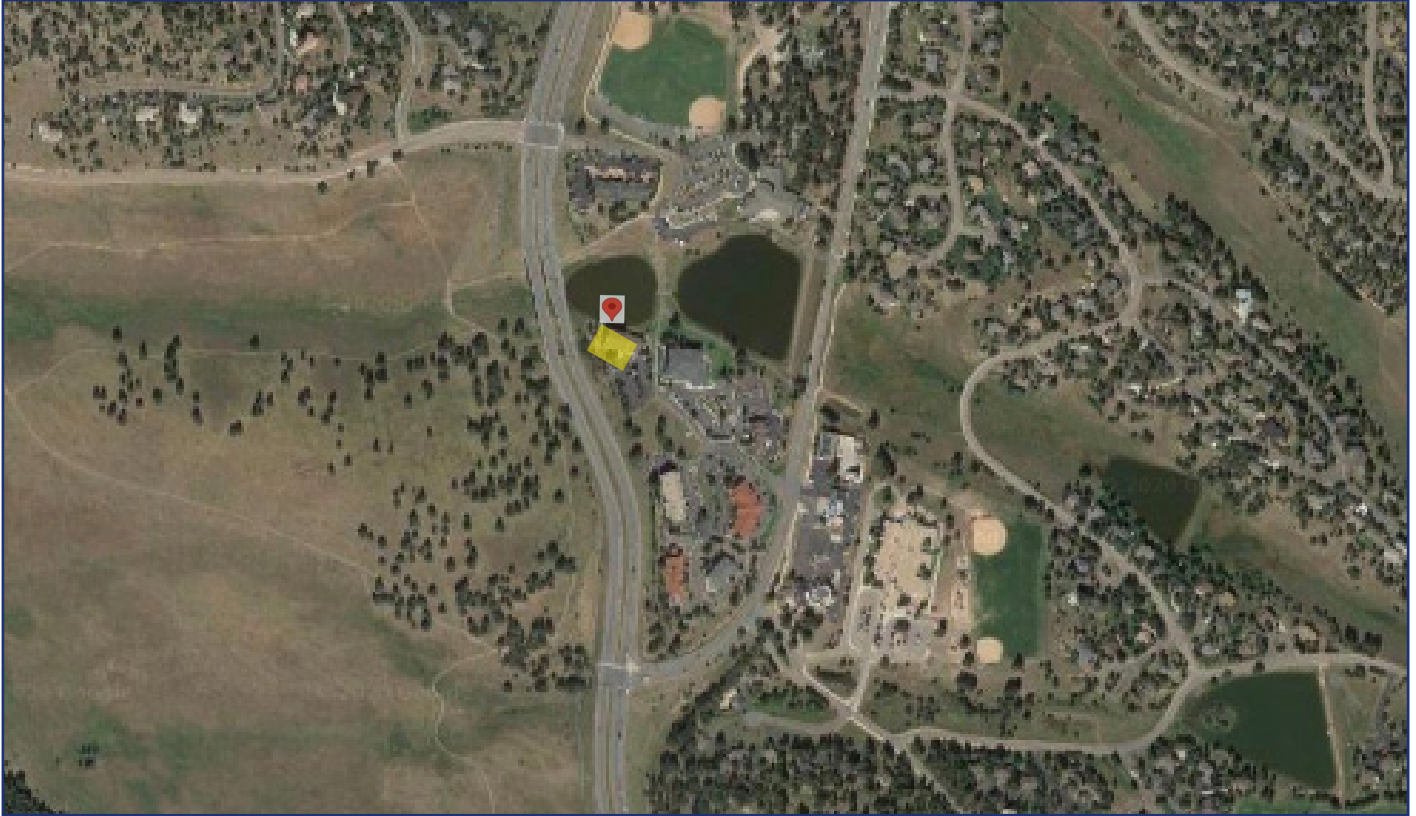
FOR MORE INFORMATION CONTACT:

RENÉE SPICER

rspicer@gcgcre.com | 720.476.5226

JAMIE MACBETH

jmacbeth@gcgcre.com | 720.476.5229



No warranty or representation is made as to the accuracy of the foregoing information. Terms of sale or lease and availability are subject to change or withdrawal without notice.

FOR MORE INFORMATION CONTACT:

RENÉE SPICER

rspicer@gcgcre.com | 720.476.5226

JAMIE MACBETH

jmacbeth@gcgcre.com | 720.476.5229