



COMMERCIAL REAL ESTATE CONSULTANTS

279 EAST 5900 SOUTH, MURRAY, UTAH 84107



Property Information

- Suite 201: 2,527 RSF
- Monument Signage Available
- Total Building: 12,566 RSF
- Fiber Available
- Easy Access to I-15 and I-215
- Adjacent to TOSH and Close Proximity to IMC Hospital

LEASE RATE : \$11.00/SF YEAR NNN
- Full Service Rates Available -

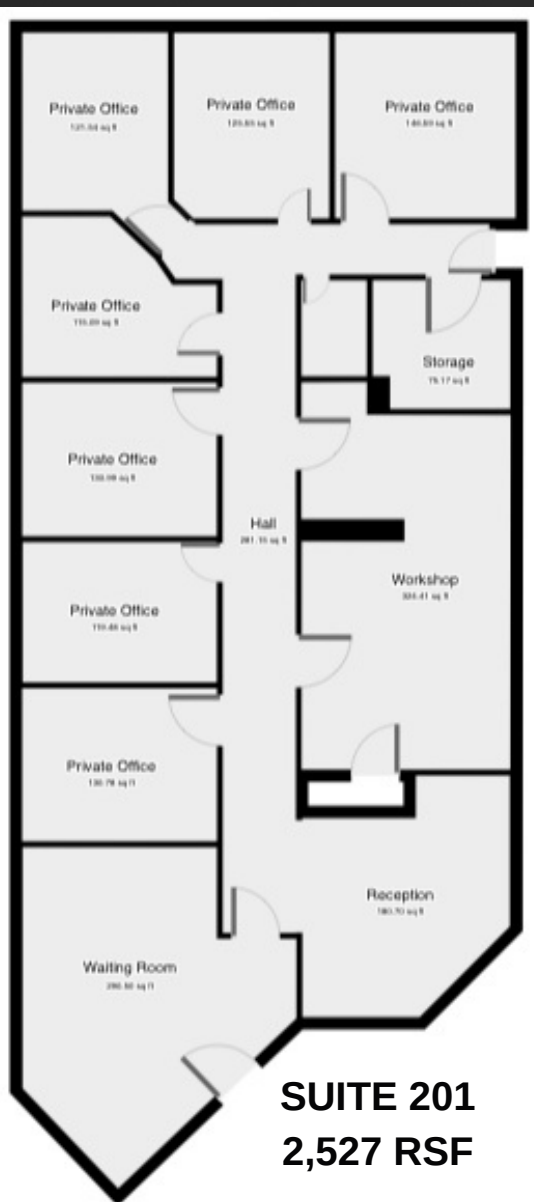
Demographics

	1 Mile	3 Mile	5 Mile
Population	14,574	135,656	367,628
Households	5,728	53,785	134,737
Avg. Household Income	\$57,144	\$55,523	\$59,609

Traffic Counts

Fashion Blvd.: 10,730 Annual Average Daily Traffic
5900 South: 10,590 Annual Average Daily Traffic

801.617.1700



This information is given with the understanding that all negotiations and/or real estate activity related to the property described above shall be conducted through this cRc Nationwide office. The above information while not guaranteed, was obtained from sources we believe to be reliable.

CONTACT
801.617.1700

KELLEN KONCAR | KELLEN.KONCAR@CRCNATIONWIDE.COM
DANEILE SNELLING | DANEILE.SNELLING@CRCNATIONWIDE.COM