

For Sale/Lease

43,725-86,000 SF



## 1000 Avenue H East

Arlington, Texas 76011

### Property Features

- ± 9,000 SF Office
- ± 16' Clear Height
- 9 Dock High Doors (10'x10')
- 4 Pit-Type Levelers
- 5 Grade Level Doors (14'x14')
- Sprinklered
- Heavy Power: 2000A/480Y-277V/3Ø/4W
- Rail Served With 1 Door (Union Pacific)
- 4 Truck Service Bays
- ± 10,000 SF 5-Bay Truck Service Building (14'x15' Doors)
- Truck Wash
- Heavy Parking
- Fenced Yard
- 30'x80' Yard Canopy
- Zoning: Industrial Manufacturing (IM)
- Situated on ± 4.59 Acres of Land



**Michael Stanzel, SIOR**

214 256 7122  
mstanzel@nairl.com

**Adam Brown**

214 256 7132  
abrown@nairl.com



THE INFORMATION CONTAINED HEREIN HAS BEEN GIVEN TO US BY THE OWNER OF THE PROPERTY OR OTHER SOURCES WE DEEM RELIABLE. WE HAVE NO REASON TO DOUBT ITS ACCURACY, BUT WE DO NOT GUARANTEE IT. ALL INFORMATION SHOULD BE VERIFIED PRIOR TO PURCHASE OR LEASE.

4851 LBJ Freeway 10<sup>th</sup> Floor  
Dallas TX 75244  
214 256 7100

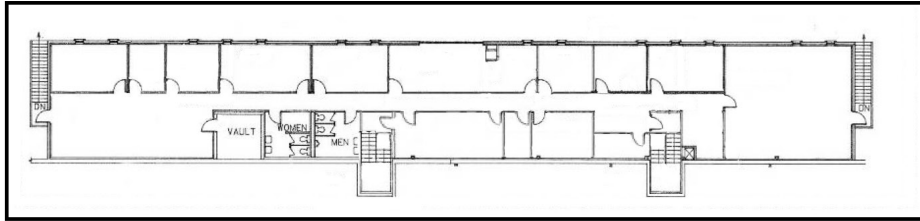
[nairl.com](http://nairl.com)

For Sale/Lease

43,725-86,000 SF

1000 Avenue H East

Arlington, Texas 76011



2nd Floor

