



CONCORD PARK II

401 East Sonterra Blvd  
San Antonio, TX 78258

*For Lease*



Building Signage Available



9311 San Pedro Ave., Ste. 850  
San Antonio, Texas 78216  
210.366.2222 office  
[www.endurasa.com](http://www.endurasa.com)

**TAYLOR DORRIS**  
Vice President  
210.366.2222 office  
210.249.0781 direct  
[tdorris@endurasa.com](mailto:tdorris@endurasa.com)





CONCORD PARK II

# 401 East Sonterra Blvd

## San Antonio, TX 78258

### For Lease



### BUILDING FEATURES

- Located in prestigious Concord Park, San Antonio's premier office environment on the corner of Sonterra Blvd and Ronald Regan Dr
- *Within minutes of more than 50 restaurants and 2 million square feet of retail, and within walking distance to The Plaza at Concord Park*
- Three-story Class A office building totaling 121,640 SF
- Professionally managed by Concord Properties
- Green Cleaning Practices in accordance with LEED standards utilized by janitorial staff
- Free parking at a ratio of 4.5:1,000; Reserved/covered parking is available
- Building signage available



5.9.22

### AVAILABILITIES

Suite 114	3,725 RSF	
Suite 165	1,172 RSF	
Suite 200	4,181 RSF	} UP TO 12,256 RSF Available 11/1/22
Suite 215	8,075 RSF	
Suite 235	5,252 RSF	

The information contained herein is believed to be accurate but is not warranted, as the information may change or be updated without notice. Seller or Landlord makes no representation as to the environmental condition of the property and recommends purchaser's or tenant's independent investigation.



9311 San Pedro Ave., Ste. 850  
 San Antonio, Texas 78216  
 210.366.2222 office  
 www.endurasa.com

**TAYLOR DORRIS**  
 Vice President  
 210.366.2222 office  
 210.249.0781 direct  
 tdorris@endurasa.com





CONCORD PARK II

# 401 East Sonterra Blvd

## San Antonio, TX 78258

### For Lease

#### PROGRESSIVE AND ELEGANT MEET ENVIRONMENTALLY SENSITIVE IN THIS MIDRISE THREE STORY BUILDING

- Elegant lobby finishes that include beautiful African Sapele wood paneling, ceramic flooring and architectural metal railings
- High performance dual-pane insulated glass
- Beautiful elevators featuring cabs of architectural glass, wood and stone
- Lobby and entrance court features public art
- 10 ft. ceilings in tenant spaces
- Highly efficient heat reflective TPO roofing system

#### ELEVATORS/UPPER FLOOR ACCESS

2-3,500 pound Schindler elevators  
Central lobby architectural stairway, plus  
two emergency exit stairs

#### PARKING

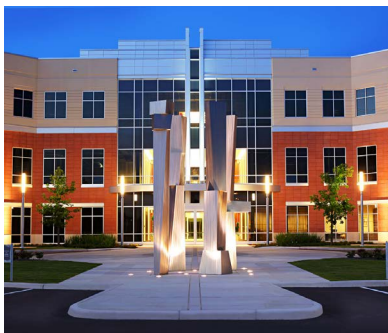
476 total, with covered/reserved parking  
spaces available, with capability to  
accommodate ratio of up to  
7:1,000 RSF

#### STATE OF THE ART HVAC SYSTEM

- Local cooling is provided by 6 air handlers with variable frequency drives, offering the capacity to match fan speed to floor load requirements for optimum energy efficiency
- 2-160 ton, high efficiency rotary screw chillers utilizing environmentally friendly R-134A refrigerant, for the highest CPS energy rating for this type of unit
- A minimum of 24 VAV boxes per floor offer the ultimate in temperature control
- Heating is accomplished by exterior VAV's
- State of the art, web-based digital control system offers tenants after hours connectivity remotely via internet
- Constant air circulation promotes a healthier and more constant indoor environment

#### OTHER

- Proximity card access for after hours security
- Normal building hours are 7 a.m. to 6 p.m., Monday through Friday and 7 a.m. to 12:30 p.m. on Saturday
- Features original commissioned art by internationally renowned artists, Laddie John Dill and Brad Howe
- Phone/Data: AT&T, TW Telecom and Time Warner Cable provide service; Fiber optic available to the building
- Web based IMPAK Work Order System Platform



The information contained herein is believed to be accurate but is not warranted, as the information may change or be updated without notice. Seller or Landlord makes no representation as to the environmental condition of the property and recommends purchaser's or tenant's independent investigation.



9311 San Pedro Ave., Ste. 850  
San Antonio, Texas 78216  
210.366.2222 office  
www.endurasa.com

**TAYLOR DORRIS**  
Vice President  
210.366.2222 office  
210.249.0781 direct  
tdorris@endurasa.com





CONCORD PARK II

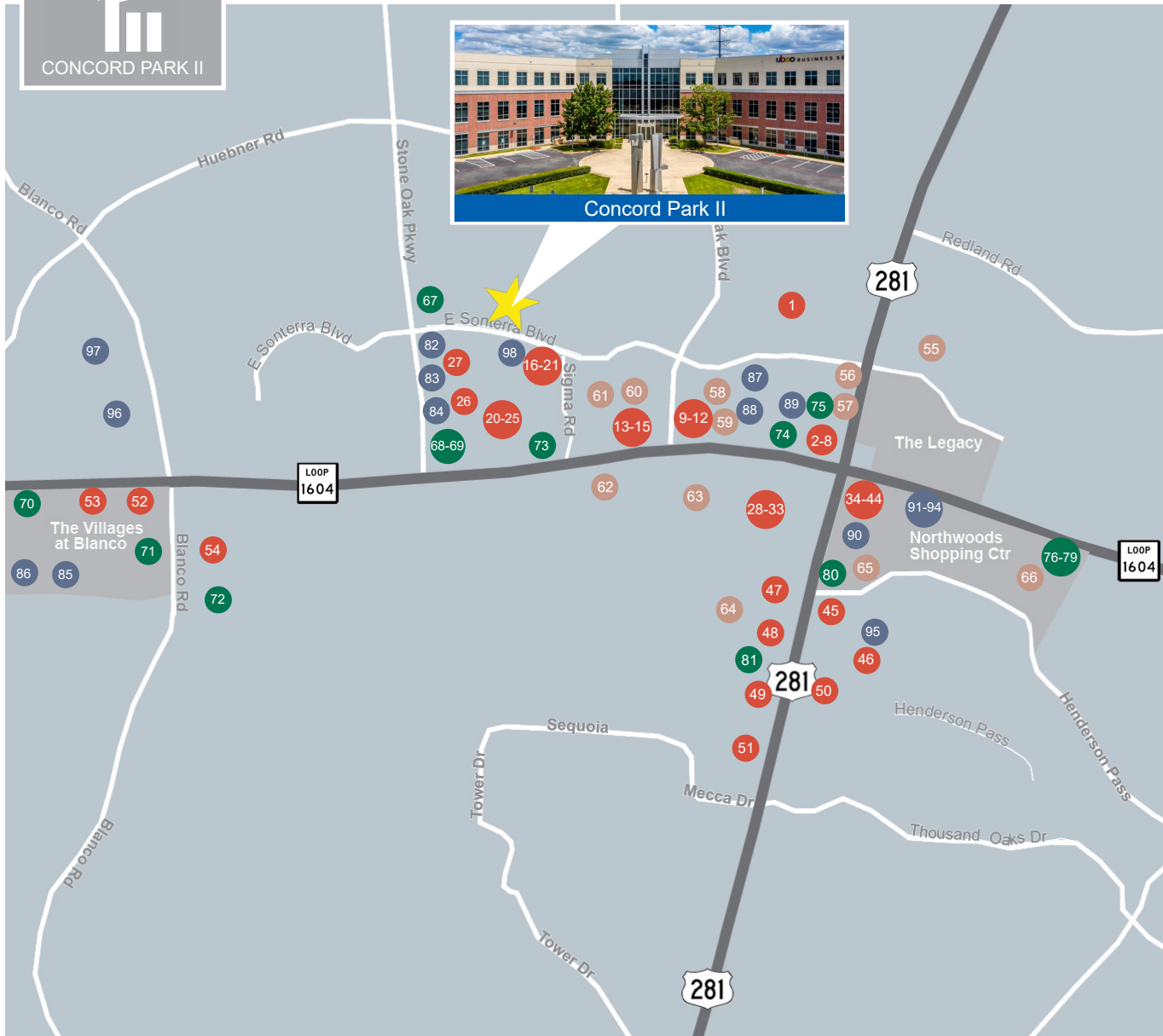
# 401 East Sonterra Blvd

## San Antonio, TX 78258

### For Lease



Concord Park II



#### DINING

1. Pericos Mexican Cuisine	20. Merit Coffee Co.	39. Starbucks
2. Chick-fil-A	21. First Watch	40. Fish City Grill
3. Whataburger	22. Kirby Steak House	41. Orange Leaf
4. Sonic Drive-in	23. Toro Kitchen	42. Zio's Italian Kitchen
5. McDonald's	24. Mellow Mushroom	43. La Madeleine
6. Chuck E. Cheese's	25. Sushi Zushi	44. Chuy's
7. Five Guys	26. Taipei	45. Chili's Grill & Bar
8. Las Palapas	27. Luciano Pizzeria	46. Sizzling Wok
9. Jason's Deli	28. Laguna Madre	47. Red Lobster
10. Smoothie King	29. Bill Miller Bar-B-Q	48. China Harbor
11. Krispy Kreme Doughnuts	30. KFC	49. Texas Roadhouse
12. Brick House Tavern	31. Taco Bell	50. Saltgrass Steakhouse
13. Gorditas Dona Tota	32. IHOP	51. Chester's Hamburgers
14. Munchies	33. Schlotzky's Deli	52. Jim's (Blanco Rd)
15. Rise Bakery	34. Red Robin	53. Taco Cabana
16. Kumori Sushi	35. Stone Cold Creamery	54. McDonalds (Blanco Rd)
17. Jimmy Johns	36. Pei Wei	
18. Nothing Bundt Cakes	37. Firehouse Subs	
19. Salata	38. Stouf's Pizza	

#### LODGING/HOSPITALITY

55. Courtyard by Marriott	61. Drury Inn & Suites
56. Hyatt Place	62. Staybridge Suites
57. Best Western	63. Fairfield Inn & Suites
58. Residence Inn & Suites	64. Days Inn & Suites
59. La Quinta Inn	65. Comfort Suites
60. Drury Plaza Hotel	66. Hampton Inn

#### BANKING

67. Jefferson Bank	75. Woodforest National
68. IBC Bank	76. RBCU
69. Frost Bank	77. Firstmark Credit Union
70. Frost Bank (Blanco Rd)	78. Farm Bureau Bank
71. Chase (Blanco Rd)	79. Wells Fargo Bank
72. Bank of America (Blanco Rd)	80. BBVA
73. The Bank of San Antonio	81. Commerce Bank
74. Security Service	

#### GROCERY/PHARMACY/MAJOR RETAIL

82. CVS Pharmacy	88. Costco	94. Stein Mart
83. Stone Oak Pharmacy	89. Walmart	95. Old Navy
84. Oakdell Pharmacy	90. H.E.B (Northwoods)	96. Target (Blanco Rd)
85. H.E.B (Blanco Rd)	91. Bed Bath & Beyond	97. Whole Foods (Blanco Rd)
86. Low's (Blanco Rd)	92. Marshall's	98. Fed Ex
87. Sonterra RX	93. Petco	



9311 San Pedro Ave., Ste. 850  
 San Antonio, Texas 78216  
 210.366.2222 office  
 www.endurasa.com

**TAYLOR DORRIS**  
 Vice President  
 210.366.2222 office  
 210.249.0781 direct  
 tdorris@endurasa.com

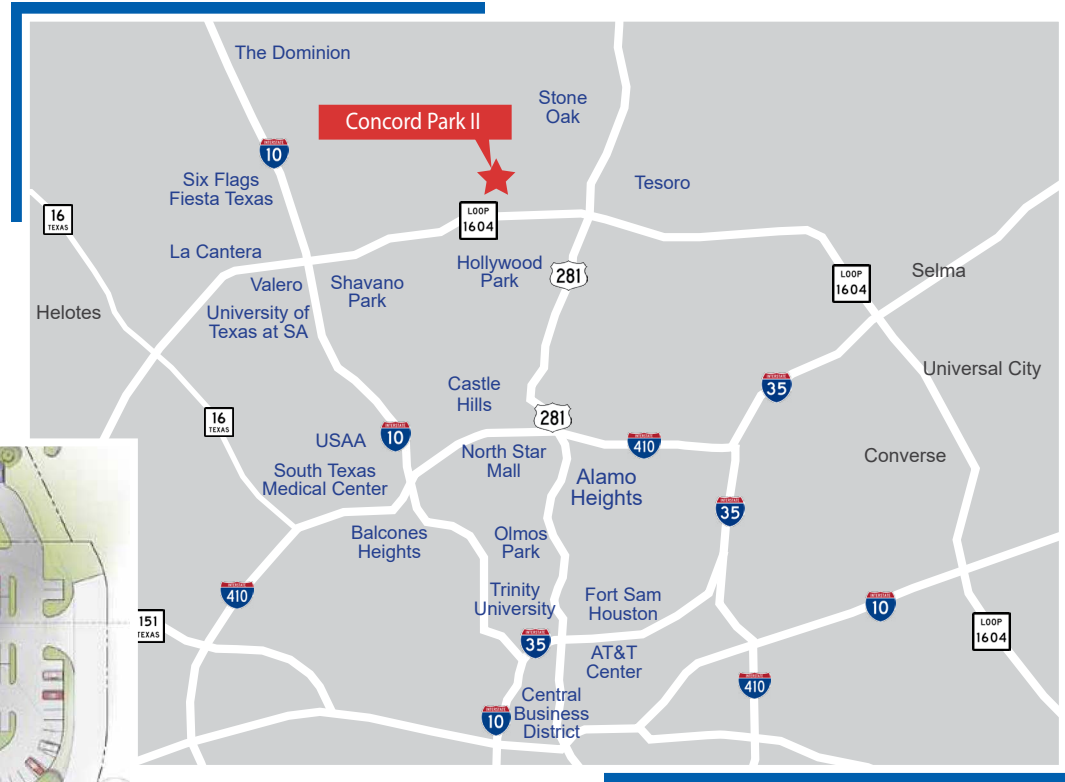




CONCORD PARK II

401 East Sonterra Blvd  
San Antonio, TX 78258

For Lease



9311 San Pedro Ave., Ste. 850  
San Antonio, Texas 78216  
210.366.2222 office  
www.endurasa.com

**TAYLOR DORRIS**  
Vice President  
210.366.2222 office  
210.249.0781 direct  
tdorris@endurasa.com



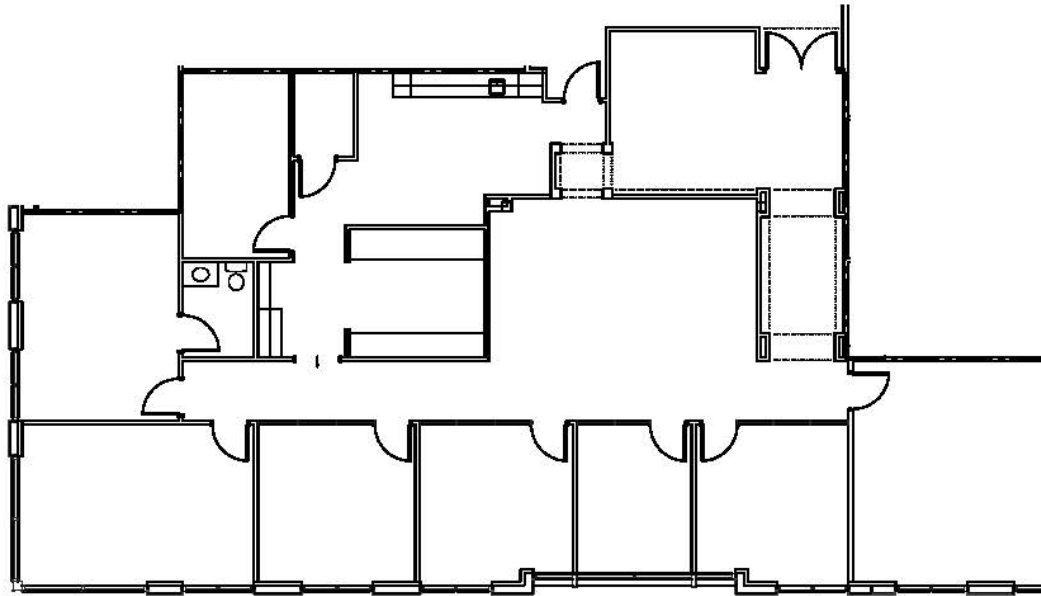


CONCORD PARK II

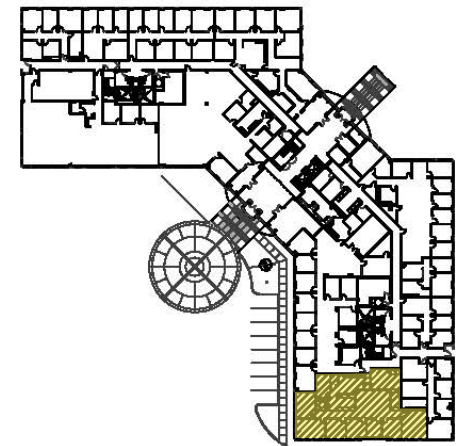
401 East Sonterra Blvd  
San Antonio, TX 78258

*For Lease*

SUITE 114  
3,725 RSF



LOCATION MAP - LEVEL 1



The information contained herein is believed to be accurate but is not warranted, as the information may change or be updated without notice. Seller or Landlord makes no representation as to the environmental condition of the property and recommends purchaser's or tenant's independent investigation.



9311 San Pedro Ave., Ste. 850  
San Antonio, Texas 78216  
210.366.2222 office  
[www.endurasa.com](http://www.endurasa.com)

**TAYLOR DORRIS**  
Vice President  
210.366.2222 office  
210.249.0781 direct  
[tdorris@endurasa.com](mailto:tdorris@endurasa.com)





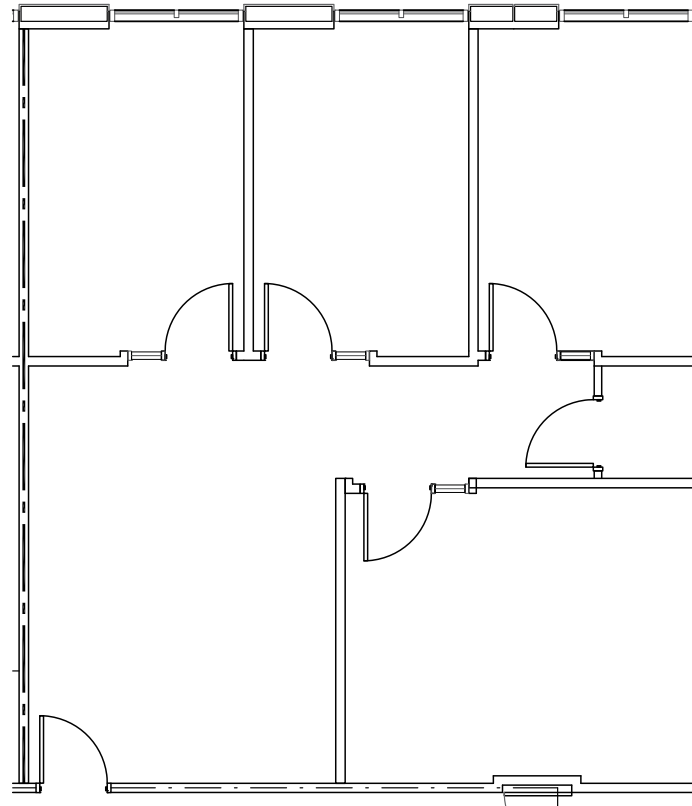
CONCORD PARK II

# 401 East Sonterra Blvd

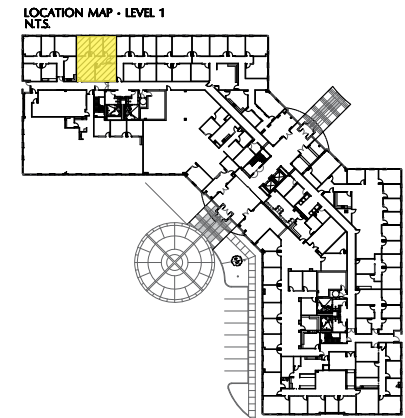
## San Antonio, TX 78258

### For Lease

SUITE 165  
1,172 RSF



SCALE 1/8" = 1'-0"



The information contained herein is believed to be accurate but is not warranted, as the information may change or be updated without notice. Seller or Landlord makes no representation as to the environmental condition of the property and recommends purchaser's or tenant's independent investigation.



9311 San Pedro Ave., Ste. 850  
San Antonio, Texas 78216  
210.366.2222 office  
www.endurasa.com

**TAYLOR DORRIS**  
Vice President  
210.366.2222 office  
210.249.0781 direct  
tdorris@endurasa.com





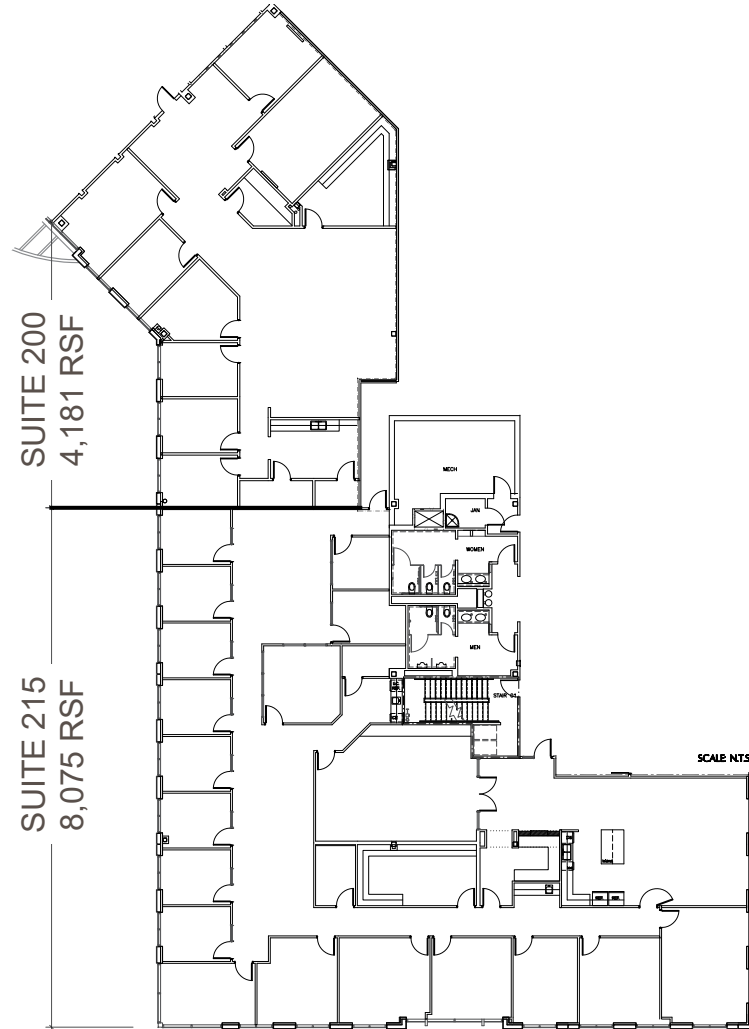
CONCORD PARK II

# 401 East Sonterra Blvd

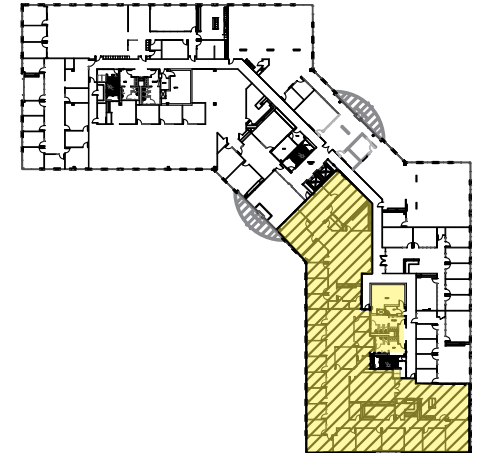
## San Antonio, TX 78258

### For Lease

SUITE 200 & 215  
UP TO - 12,256 RSF  
AVAILABLE 11/1/22



LOCATION MAP - LEVEL 2



The information contained herein is believed to be accurate but is not warranted, as the information may change or be updated without notice. Seller or Landlord makes no representation as to the environmental condition of the property and recommends purchaser's or tenant's independent investigation.



9311 San Pedro Ave., Ste. 850  
San Antonio, Texas 78216  
210.366.2222 office  
[www.endurasa.com](http://www.endurasa.com)

**TAYLOR DORRIS**  
Vice President  
210.366.2222 office  
210.249.0781 direct  
[tdorris@endurasa.com](mailto:tdorris@endurasa.com)







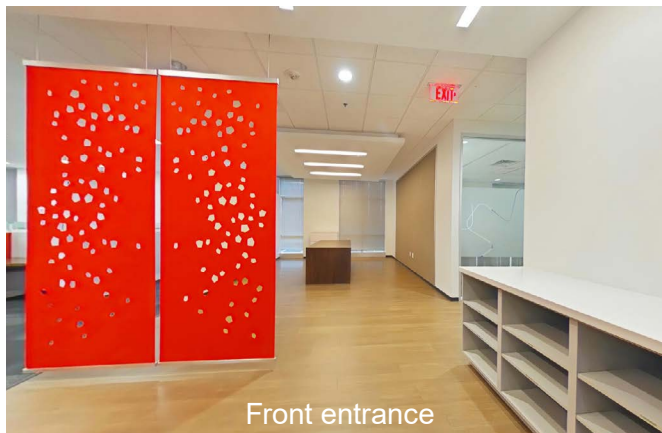
CONCORD PARK II

# 401 East Sonterra Blvd

## San Antonio, TX 78258

### For Lease

Suite 235  
5,252 rsf



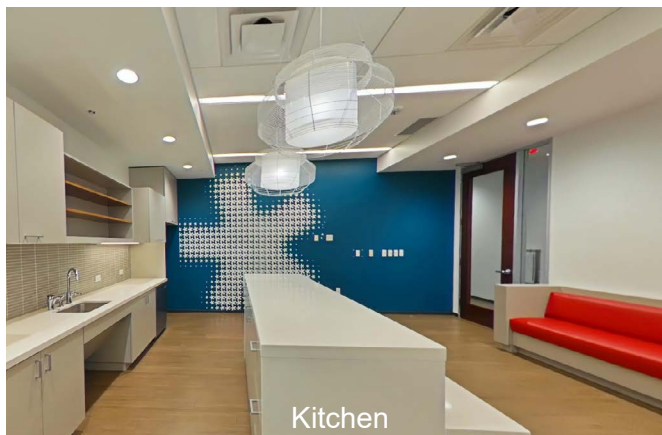
Front entrance



Cubicles



Conference room



Kitchen



Office



Mail / Work room

The information contained herein is believed to be accurate but is not warranted, as the information may change or be updated without notice. Seller or Landlord makes no representation as to the environmental condition of the property and recommends purchaser's or tenant's independent investigation.



9311 San Pedro Ave., Ste. 850  
San Antonio, Texas 78216  
210.366.2222 office  
www.endurasa.com

**TAYLOR DORRIS**  
Vice President  
210.366.2222 office  
210.249.0781 direct  
tdorris@endurasa.com



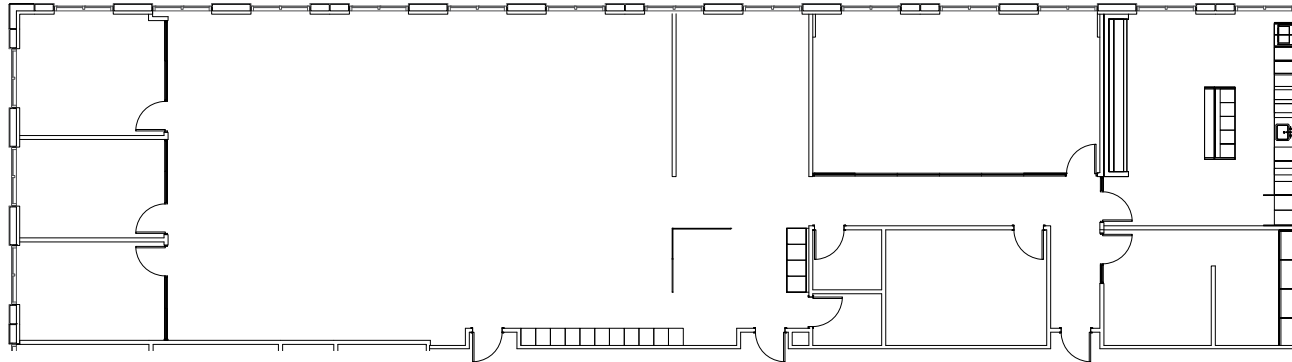


CONCORD PARK II

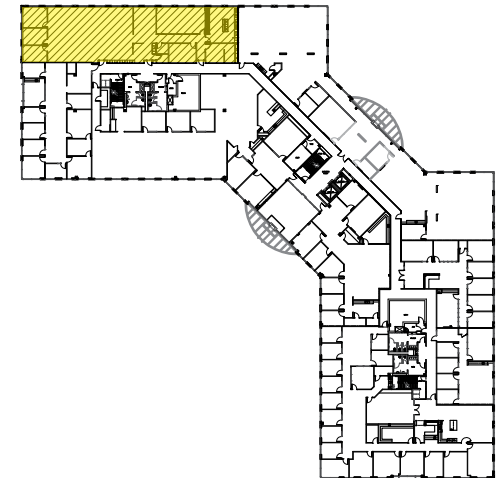
401 East Sonterra Blvd  
San Antonio, TX 78258

*For Lease*

SUITE 235  
5,252 RSF



[Click to view  
360° Tour](#)



The information contained herein is believed to be accurate but is not warranted, as the information may change or be updated without notice. Seller or Landlord makes no representation as to the environmental condition of the property and recommends purchaser's or tenant's independent investigation.



9311 San Pedro Ave., Ste. 850  
San Antonio, Texas 78216  
210.366.2222 office  
www.endurasa.com

**TAYLOR DORRIS**  
Vice President  
210.366.2222 office  
210.249.0781 direct  
tdorris@endurasa.com





# Information About Brokerage Services

Texas law requires all real estate license holders to give the following information about brokerage services to prospective buyers, tenants, sellers and landlords.

## TYPES OF REAL ESTATE LICENSE HOLDERS:

- A **BROKER** is responsible for all brokerage activities, including acts performed by sales agents sponsored by the broker.
- A **SALES AGENT** must be sponsored by a broker and works with clients on behalf of the broker.

## A BROKER'S MINIMUM DUTIES REQUIRED BY LAW (A client is the person or party that the broker represents):

- Put the interests of the client above all others, including the broker's own interests;
- Inform the client of any material information about the property or transaction received by the broker;
- Answer the client's questions and present any offer to or counter-offer from the client; and
- Treat all parties to a real estate transaction honestly and fairly.

## A LICENSE HOLDER CAN REPRESENT A PARTY IN A REAL ESTATE TRANSACTION:

**AS AGENT FOR OWNER (SELLER/LANDLORD):** The broker becomes the property owner's agent through an agreement with the owner, usually in a written listing to sell or property management agreement. An owner's agent must perform the broker's minimum duties above and must inform the owner of any material information about the property or transaction known by the agent, including information disclosed to the agent or subagent by the buyer or buyer's agent.

**AS AGENT FOR BUYER/TENANT:** The broker becomes the buyer/tenant's agent by agreeing to represent the buyer, usually through a written representation agreement. A buyer's agent must perform the broker's minimum duties above and must inform the buyer of any material information about the property or transaction known by the agent, including information disclosed to the agent by the seller or seller's agent.

**AS AGENT FOR BOTH - INTERMEDIARY:** To act as an intermediary between the parties the broker must first obtain the written agreement of *each party* to the transaction. The written agreement must state who will pay the broker and, in conspicuous bold or underlined print, set forth the broker's obligations as an intermediary. A broker who acts as an intermediary:

- Must treat all parties to the transaction impartially and fairly;
- May, with the parties' written consent, appoint a different license holder associated with the broker to each party (owner and buyer) to communicate with, provide opinions and advice to, and carry out the instructions of each party to the transaction.
- Must not, unless specifically authorized in writing to do so by the party, disclose:
  - o that the owner will accept a price less than the written asking price;
  - o that the buyer/tenant will pay a price greater than the price submitted in a written offer; and
  - o any confidential information or any other information that a party specifically instructs the broker in writing not to disclose, unless required to do so by law.

**AS SUBAGENT:** A license holder acts as a subagent when aiding a buyer in a transaction without an agreement to represent the buyer. A subagent can assist the buyer but does not represent the buyer and must place the interests of the owner first.

## TO AVOID DISPUTES, ALL AGREEMENTS BETWEEN YOU AND A BROKER SHOULD BE IN WRITING AND CLEARLY ESTABLISH:

- The broker's duties and responsibilities to you, and your obligations under the representation agreement.
- Who will pay the broker for services provided to you, when payment will be made and how the payment will be calculated.

**LICENSE HOLDER CONTACT INFORMATION:** This notice is being provided for information purposes. It does not create an obligation for you to use the broker's services. Please acknowledge receipt of this notice below and retain a copy for your records.

Endura Advisory Group, GP, LLC Licensed Broker /Broker Firm Name or Primary Assumed Business Name	581037 License No.	jlundblad@endurasa.com Email	(210) 366-2222 Phone
James G. Lundblad Designated Broker of Firm	337803 License No.	jlundblad@endurasa.com Email	(210) 366-2222 Phone
James G. Lundblad Licensed Supervisor of Sales Agent/ Associate	337803 License No.	jlundblad@endurasa.com Email	(210) 366-2222 Phone
Taylor Dorris Sales Agent/Associate's Name	503845 License No.	tdorris@endurasa.com Email	(210) 366-2222 Phone

\_\_\_\_\_ Buyer/Tenant/Seller/Landlord Initials \_\_\_\_\_ Date