

OFFICE CONDO FOR LEASE AND SALE

Southlake Park

Hoover, AL 35244



SHANNON
WALTCHACK



OFFERING SUMMARY

Lease Rate:	\$19.00 SF/yr
	Net of Utilities and Janitorial
Sale Price:	\$200.00 /SF
Available SF:	2,500 SF

PROPERTY HIGHLIGHTS

- Office Condo available for lease or sale at Southlake Park
- Professional office setting with high-end finishes
- Located in City of Hoover on Valleydale Road
- Convenient to I-65
- Water/Sewer included

MICHAEL MURRAY, CCIM

205.382.1896

mm@shanwalt.com

The information contained herein is from sources deemed reliable. No representation is made to the accuracy herein.

WE LOVE
REAL ESTATE

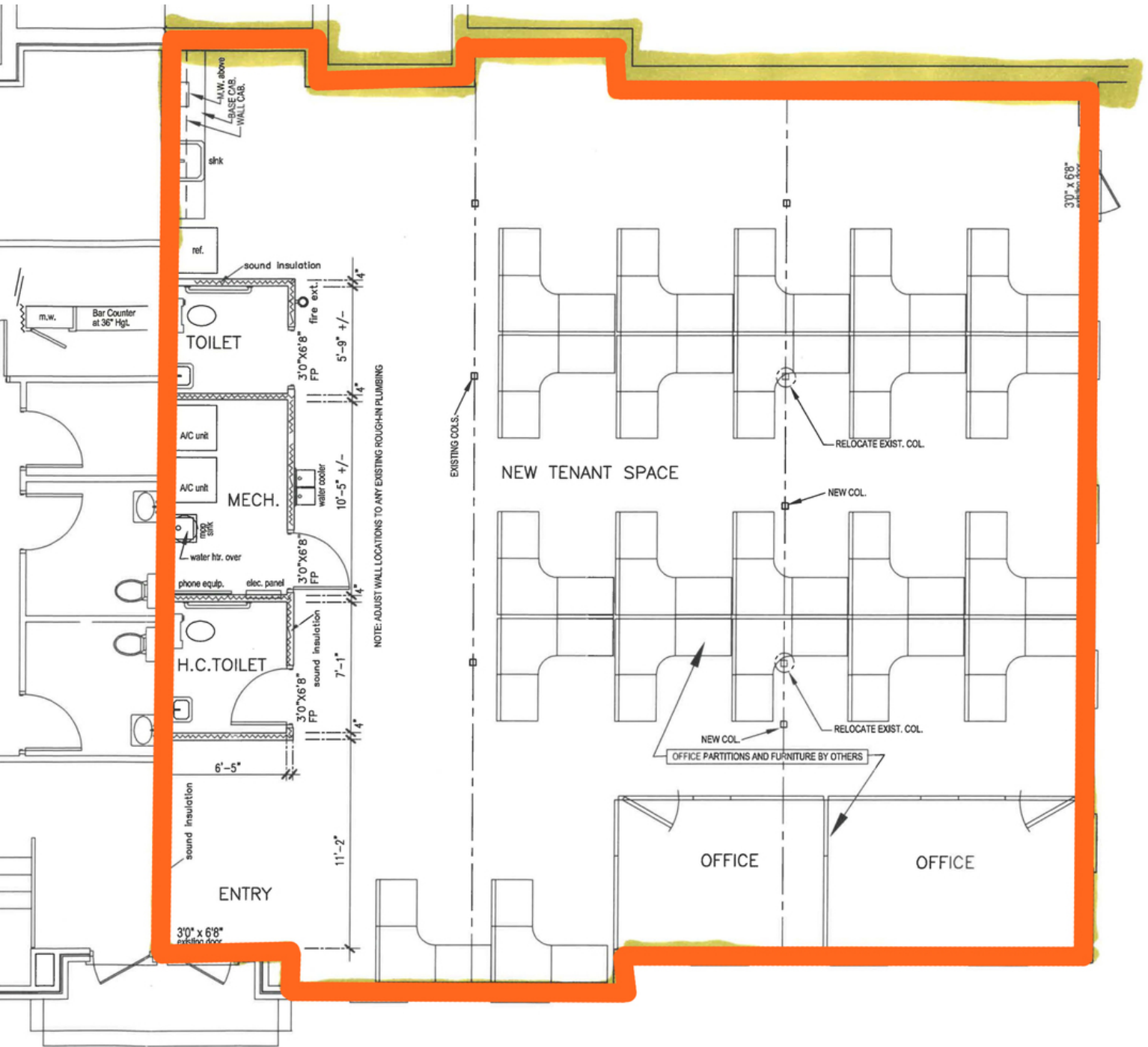
OFFICE CONDO FOR LEASE AND SALE

Southlake Park

Hoover, AL 35244



SHANNON
WALTCHACK



5000 Southlake Park - Suite 150: 2,500 SF

MICHAEL MURRAY, CCIM
205.382.1896
mm@shanwalt.com

WE LOVE
REAL ESTATE

The information contained herein is from sources deemed reliable. No representation is made to the accuracy herein.