

FOR SALE OR LEASE

811 East Genesee Street
Syracuse, New York 13210



MAXIMUM EXPOSURE IN THRIVING COMMUNITY

5,994± SF Commercial/Store Front

Property Highlights

- Close proximity to Syracuse University, SUNY ESF and Upstate Medical University
- On site, off street parking available
- Recent investment in University Hill Area as of 2018 equals \$500 million; additional projects to be initiated prior to 2020 will total \$350 million
- Recent development has added an additional 1,500 new residents within 0.2 miles of the subject property
- Located on bus line on the heavily traveled E. Genesee St. corridor
- Easily accessible with convenient ingress/egress to all major roadways

Student Housing

- | | |
|----------|----------------------|
| 1 | 505 on Walnut |
| 2 | U-Point |
| 3 | Copper Beach Commons |
| 4 | Rosewood |
| 5 | Sylvester Building |
| 6 | Theory Syracuse |
| 7 | Fayette Place |
| 8 | 728 E. Genesee St. |

Units

- | |
|-----|
| 363 |
| 54 |
| 133 |
| 94 |
| 42 |
| 604 |
| 36 |
| 161 |

Hotels

- | | |
|-----------|----------------|
| 9 | Genesee Grande |
| 10 | Parkview Hotel |
| 11 | Crowne Plaza |
| 12 | Hotel Skyler |

Rooms

- | |
|-----|
| 75 |
| 83 |
| 280 |
| 58 |

For more information, please contact:

David M. Carnie
Associate Real Estate Broker
+1 315.445.8503
dcarnie@pyramidbrokerage.com

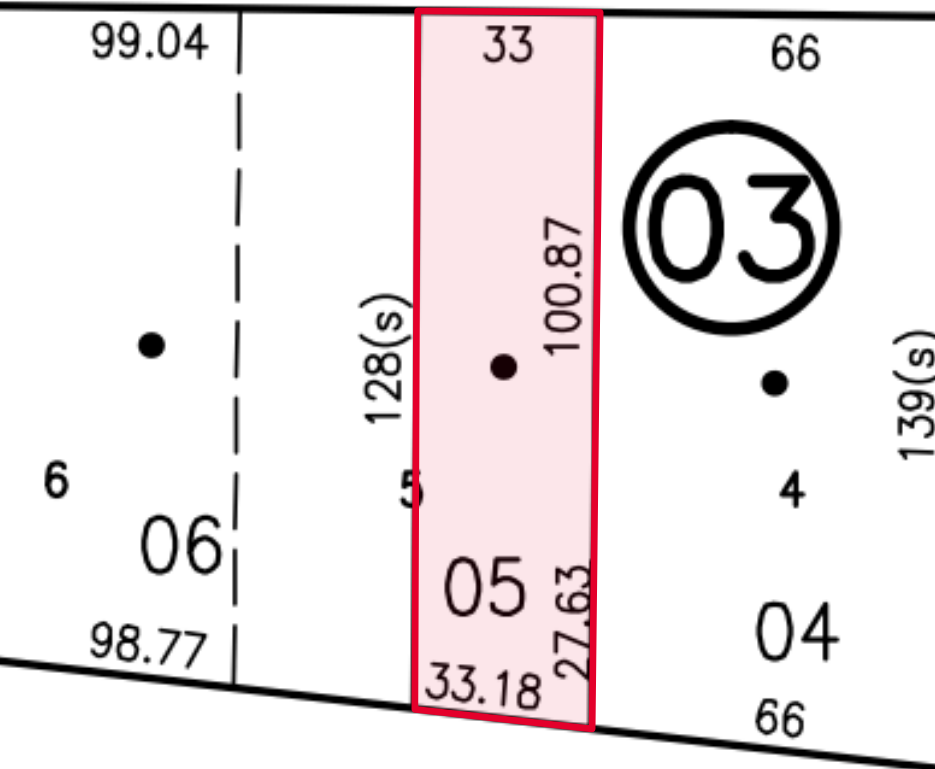
Samuel J. Vulcano
Real Estate Salesperson
+1 315.445.8507
svulcano@pyramidbrokerage.com

5845 Widewaters Pkwy, Suite 200
East Syracuse, New York 13057
phone: +1 315.445.1030

FOR SALE OR LEASE

811 East Genesee Street
Syracuse, New York 13210

ON



Traffic Counts

East Genesee Street 6,806 AADT

I-81 88,347 AADT

Source: NYS DOT 2019

Demographic

0.5 Mile

1 Mile

2 Miles

Population 6,375 27,902 90,926

Households 2,492 10,162 34,811

Median Age 24.6 24.4 28.9

Daytime Employees 37,872 71,601 92,739

Source: ESRI Business Analyst 2019

FOR SALE OR LEASE

811 East Genesee Street

Syracuse, New York 13210

