


**FORMER CHASE BANK**

## 1,920± SF Retail/Professional Building

### Property Highlights

- Great location in the heart of the Village
- High visibility site on Main Street
- Corner lot provides easy access
- Off street parking behind building
- Well maintained property, recently renovated
- Stand alone building with full basement – great storage space
- HVAC – central air, rooftop unit
- Drive-up window
- Off street parking behind building
- Zoned Commercial C
- Uses include retail stores, office, restaurant, pet shop/veterinary shop

Demographic	1 Mile	3 Miles	5 Miles
Population	3,866	12,261	47,186
Households	1,599	5,027	20,009
Average Income	\$76,710	\$90,630	\$95,316
Daytime Employees	658	6,683	45,519
Source: ESRI Business Analyst 2020			

Drive Times	
Fayetteville	7 min/3.6 mi.
East Syracuse	12 min/5.7 mi.
Syracuse	15 min/10.6 mi.

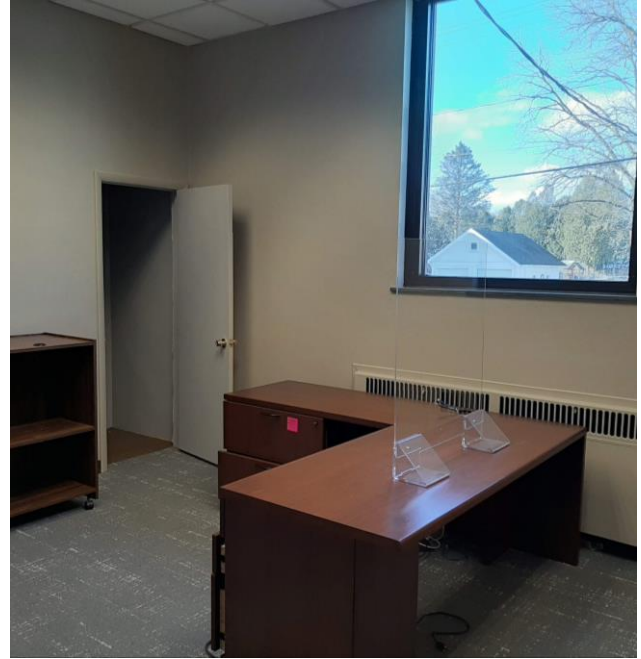
For more information, please contact:

**Patrick J. Hillery**  
**Real Estate Salesperson**  
 +1 315.445.8501  
 phillery@pyramidbrokerage.com

5845 Widewaters Pkwy, Suite 200  
 East Syracuse, New York 13057  
 phone: +1 315.445.1030  
 pyramidbrokerage.com



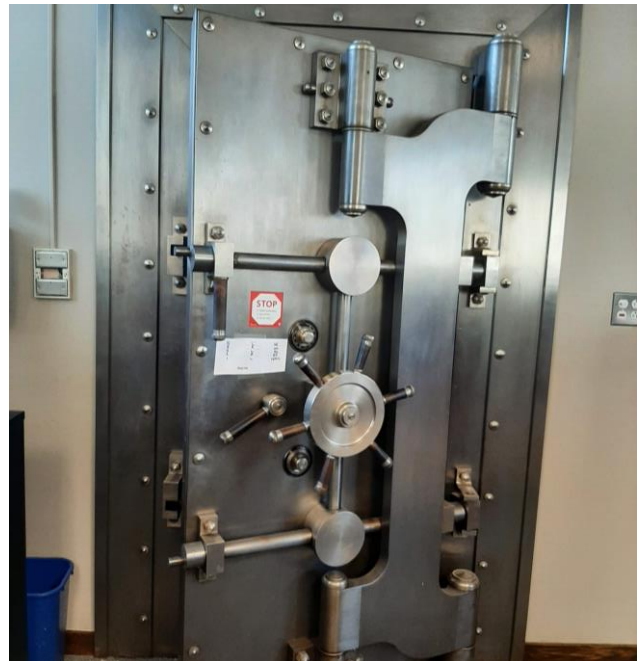
Main Area



Private Office



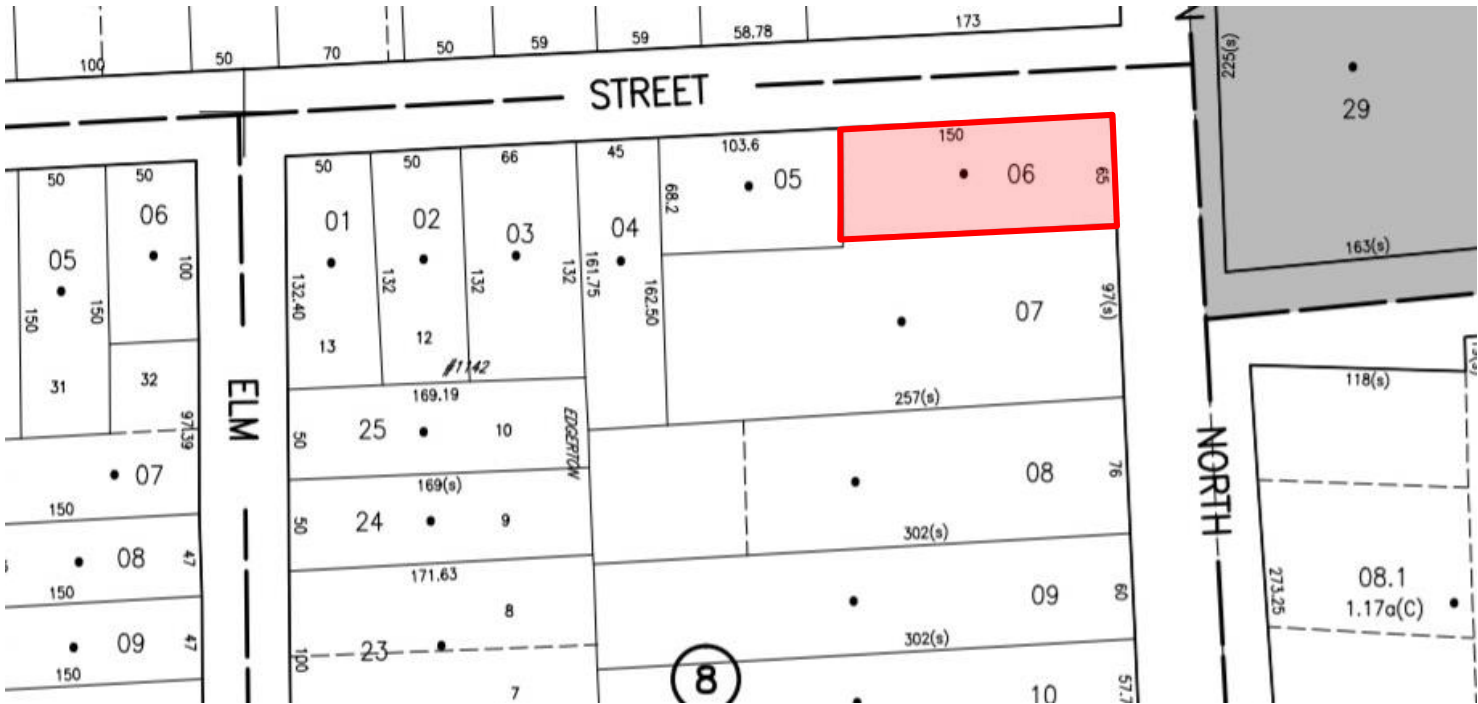
Basement



Vault



Property Outline



Tax Map



FOR SALE

249 North Main Street

Minoa, New York 13116

