

Great Office Buildings & Space Available

Property Highlights

- Two office buildings, approximately 30,000± total gross square feet
- High quality office space for lease with great visibility (I-90) and access
- Free parking for 130+ cars, with multiple curb cuts
- Professionally landscaped grounds; janitorial included
- Fantastic access to NYS Thruway (I-90) at Electronics Parkway and I-81
- **1020 7th North Street**
 - Two story with great window lines, elevator accessibility
 - Newly painted lobby and other improvements
 - Four suites available for lease
 - 1st Floor: 4,100± SF (furnished)
 - 1st Floor: 2,229± SF
 - 2nd Floor: 6,216± SF and 1,090± SF, can be combined
- **1000 7th North Street**
 - Two story office building
 - Two suites available for lease
 - 1st Floor: 800± SF
 - 2nd Floor: 1,650± SF

Demographic	1 Mile	3 Miles	5 Miles
Population	9,810	65,815	191,241
Households	4,536	28,341	80,935
Average Income	\$72,777	\$66,203	\$64,346
Daytime Employees	5,592	41,179	166,967

Source: ESRI Business Analyst 2020

Traffic Counts			
7 th North Street	13,448 AADT	I-90	40,173 AADT
Electronics Pkwy	20,080 AADT	I-90 Exit	7,367 AADT

Source: NYS DOT 2019

For more information, please contact:

Donald R O'Leary
Associate Real Estate Broker
 +1 315.445.8515
 doleary@pyramidbrokerage.com

Independently Owned and Operated / A Member of the Cushman & Wakefield Alliance
 Cushman & Wakefield Copyright 2015. No warranty or representation, express or implied, is made to the accuracy or completeness of the information contained herein, and same is submitted subject to errors, omissions, change of price, rental or other conditions, withdrawal without notice, and to any special listing conditions imposed by the property owner(s). As applicable, we make no representation as to the condition of the property (or properties) in question.

WILLOWOOD OFFICE PARK



5845 Widewaters Pkwy, Suite 200
 East Syracuse, New York 13057
 phone: +1 315.445.1030

FOR SALE OR LEASE

1000 & 1020 Seventh North Street
Liverpool, New York 13088



FOR SALE OR LEASE

1000 & 1020 Seventh North Street
Liverpool, New York 13088

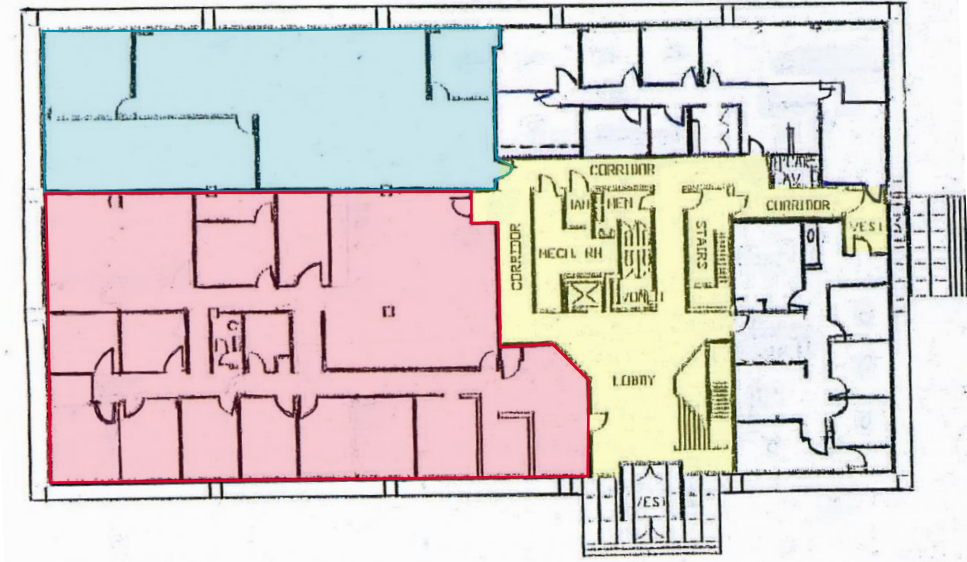
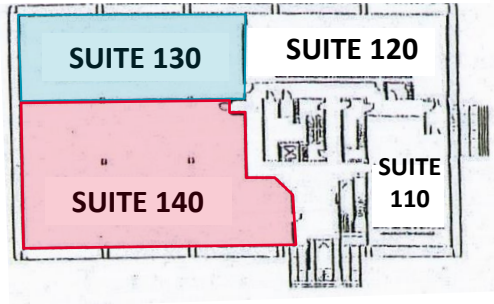


1020 7th North Street

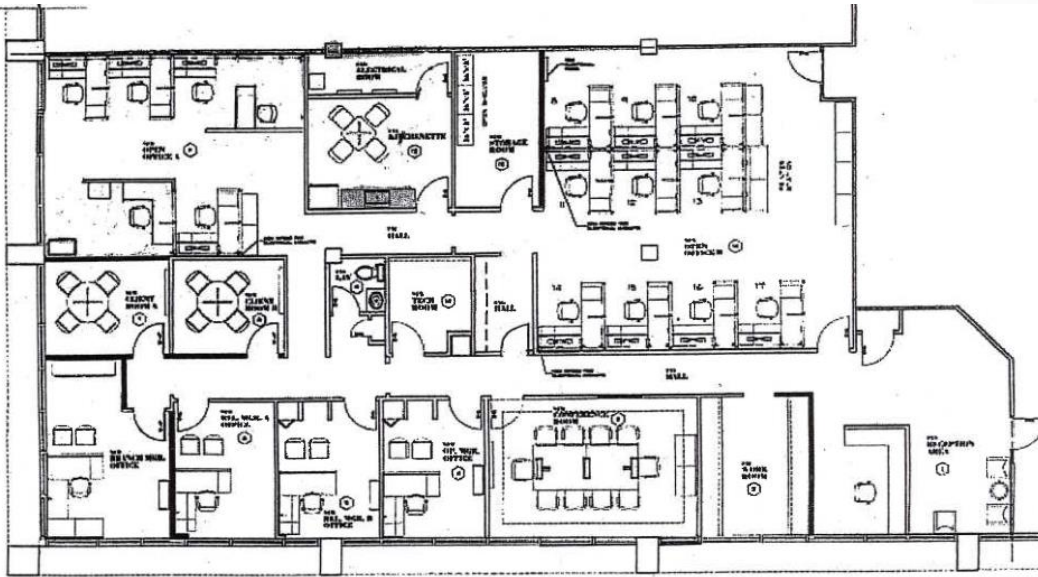
FIRST FLOOR

**WILLOWOOD
 FIRST FLOOR KEY PLAN**

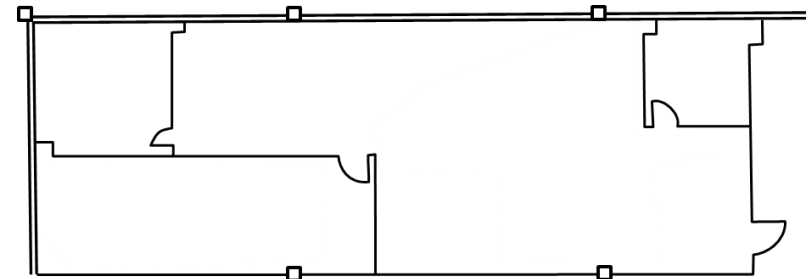
- SUITE 110 --- 1166 SQ. FT.
- SUITE 120 --- 1633 SQ. FT.
- SUITE 130 --- 2229 SQ. FT.
- SUITE 140 --- 4100 SQ. FT.
- Common Areas



**SUITE 140 EXISTING LAYOUT
 4,100± SF**



**SUITE 130 EXISTING LAYOUT
 2,229± SF**



1020 7th North Street

SECOND FLOOR

WILLOWOOD
SECOND FLOOR KEY PLAN

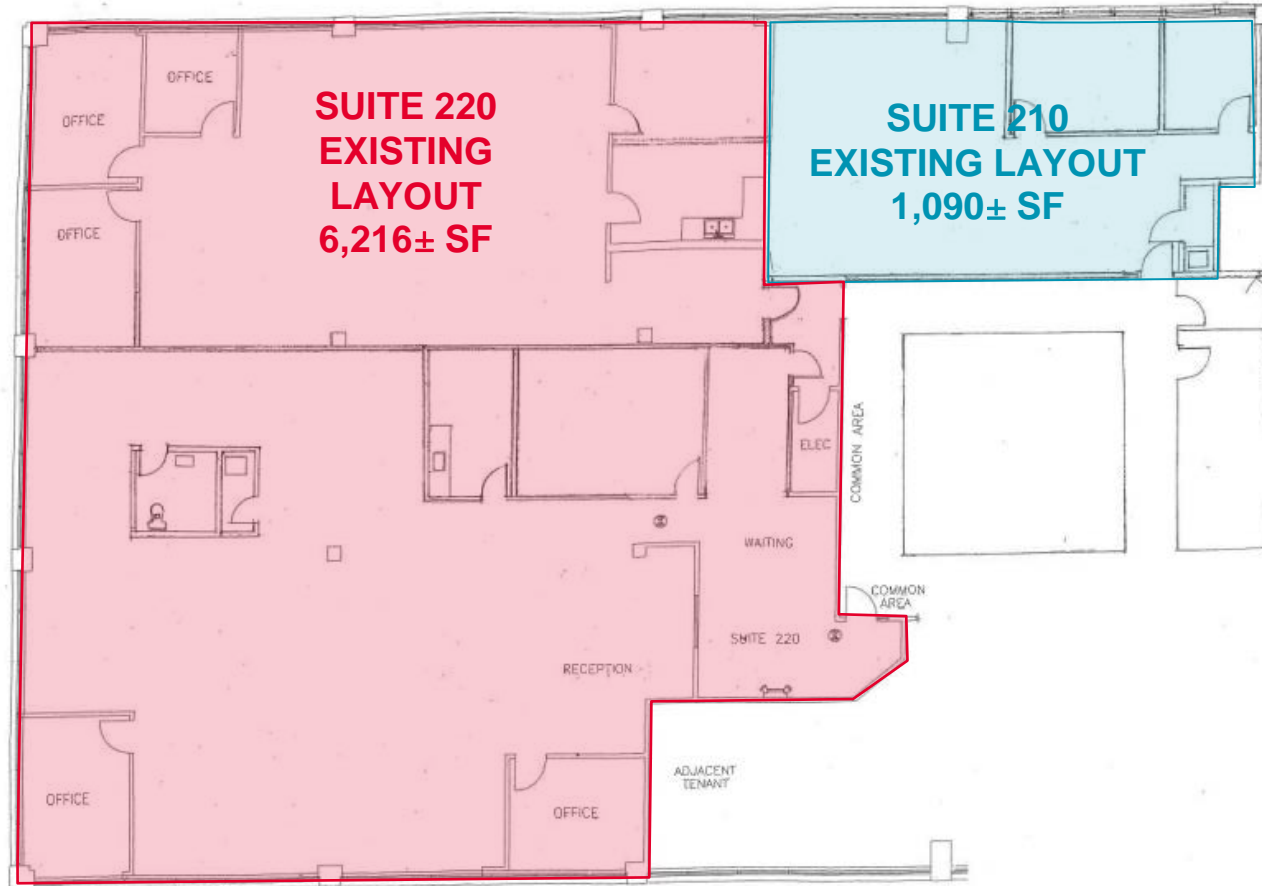
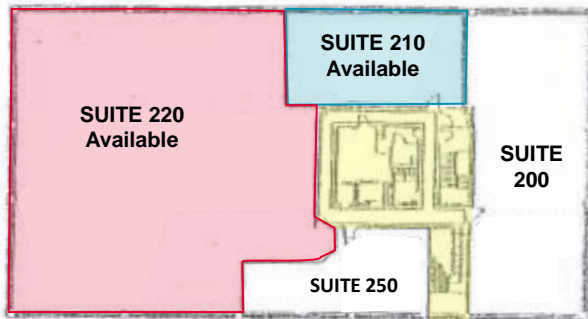
SUITE 200 --- 2472 SQ. FT.

SUITE 210 --- 1090 SQ. FT.

SUITE 220 --- 6216 SQ. FT.

SUITE 250 --- 1051 SQ. FT.

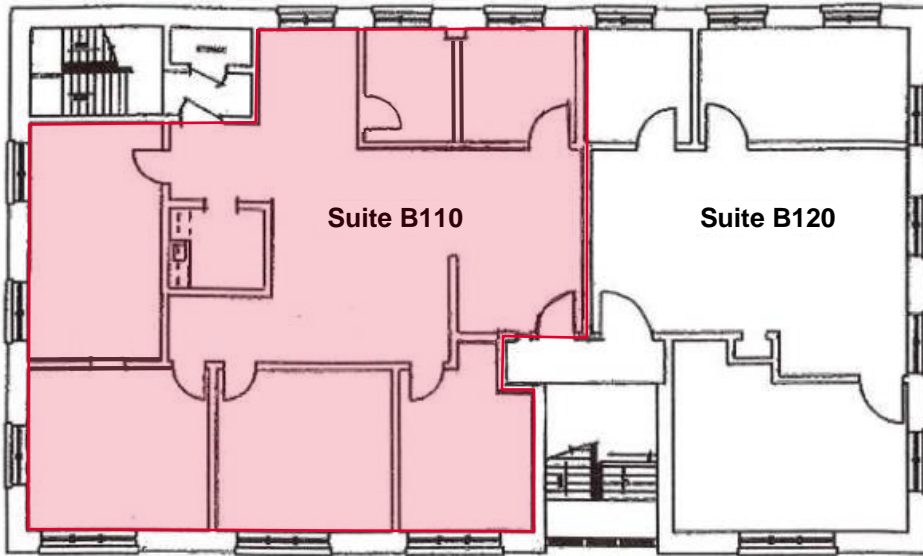
--- Common Areas



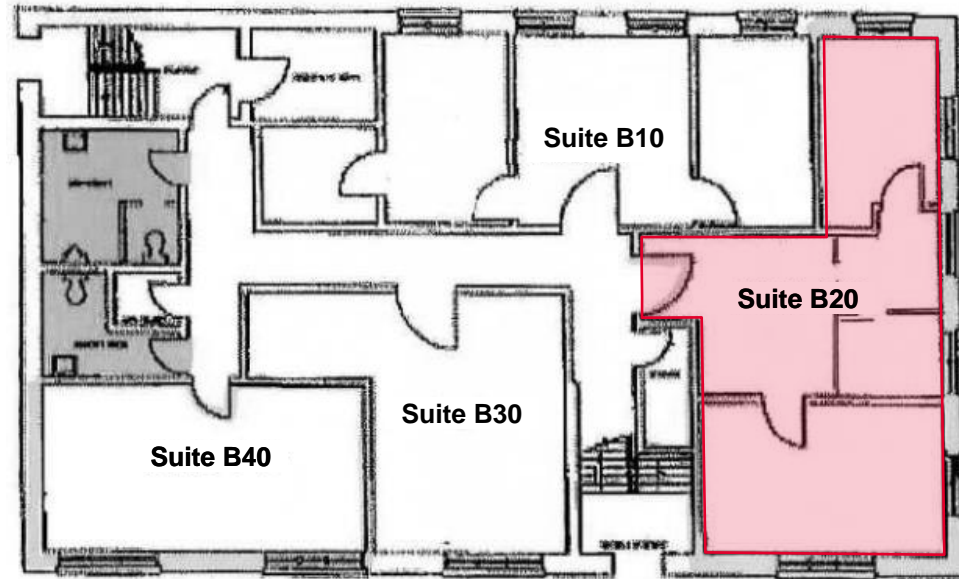
**SUITE 220 CAN BE
SUBDIVIDED OR ADDED WITH
SUITE 210 FOR 7,300± SF**

1000 7th North Street

UPPER LEVEL FLOOR PLAN

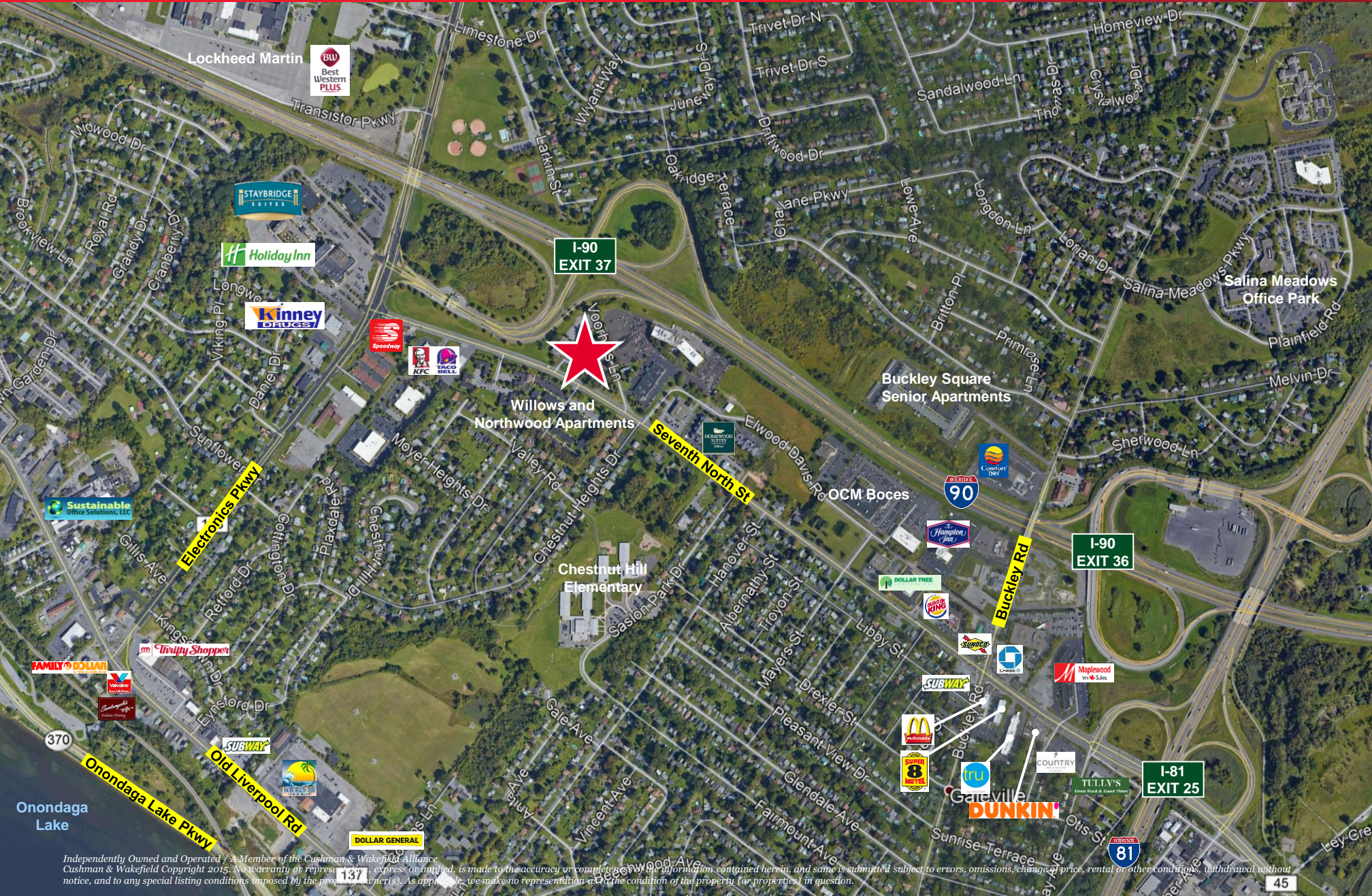


LOWER LEVEL FLOOR PLAN



FOR SALE OR LEASE

1000 & 1020 Seventh North Street Liverpool, New York 13088



I-90
EXIT 37

I-90
EXIT 36

I-81
EXIT 25

Willows and
Northwood Apartments

Buckley Square
Senior Apartments

Salina Meadows
Office Park

Chestnut Hill
Elementary

OCM Boces

Onondaga
Lake

370

DOLLAR GENERAL

Independently Owned and Operated / A Member of the Cushman & Wakefield Alliance
Cushman & Wakefield Copyright 2015. No warranty or representation, express or implied, is made to the accuracy or completeness of the information contained herein, and same is submitted subject to errors, omissions, change of price, rental or other conditions, withdrawal without notice, and to any special listing conditions imposed by the property owner(s). As applicable, we make no representation as to the condition of the property (or properties) in question.

FOR SALE OR LEASE

1000 & 1020 Seventh North Street

Liverpool, New York 13088

Approximate plot lines subject to verification of survey.



1,736 AADT/19

2,298 AADT/19

40,173 AADT/19

2,263 AADT/19

I-90
EXIT 37

Seventh North St

Ample Parking

1020 7th North Street

Ample Parking

Voorhes Ln

1000 7th North Street

13,448 AADT/19