

PROFESSIONAL OFFICE SPACE

- Beautifully remodeled offices in charming westside neighborhood.
- Individual offices for rent or entire building.
- Proximity to Lourdes Hospital and downtown Binghamton.
- Suitable for healthcare professionals.
- On-site parking.
- Shared kitchenette, fax, internet provided.

DETAILS	
AVAILABLE	3,100 SF
LOT SIZE	0.17 acres
TAX ID	160.63-1-22
ZONING	C-1
PARKING	On-site

For more information, contact:

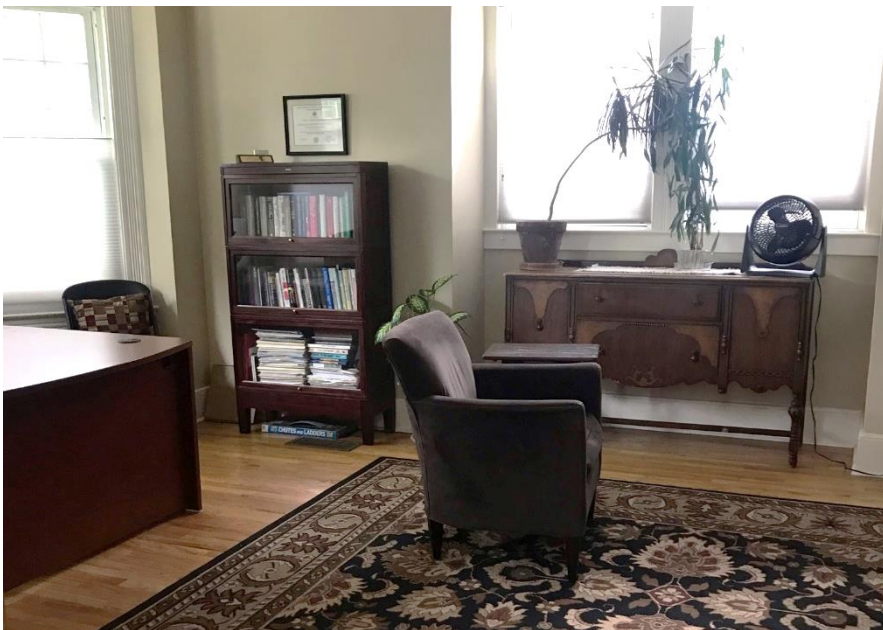
Patricia “Trish” A. Grassi
 Real Estate Salesperson
 +1 607 754 5990 x312
Tgrassi@pyramidbrokerage.com

84 Court Street, Suite 300
 Binghamton, New York 13901
 phone: +1 607 754 5990

pyramidbrokerage.com



FOR LEASE
35 Riverside Drive
Binghamton, New York



FOR LEASE
35 Riverside Drive
Binghamton, New York

