



EXCELLENT RETAIL OPPORTUNITY

3,108± SF Former Bank Branch

Property Highlights

- Situated on 1.5± acres
- 275± feet of frontage on Oswego Road/Route 57
- Signalized/dedicated access
- Three (3) drive-throughs
- Zoned NC-1 Commercial
- Located on busy retail corridor near new Amazon Fulfillment Center

Demographic	1 Mile	3 Miles	5 Miles
Population	11,276	47,142	107,150
Households	4,680	19,754	44,710
Average Income	\$81,686	\$85,176	\$84,513
Daytime Employees	3,239	21,956	46,174
Source: ESRI Business Analyst 2020			

Traffic Counts	
Oswego Road/Route 57	26,093 AADT
John Glenn Blvd East of Route 57 West of Route 57	13,126 AADT 20,580 AADT
Source: NYS DOT 2019	

For more information, please contact:

Joyce Mawhinney MacKnight
Associate Real Estate Broker

+1 315.445.8514

jmacknight@pyramidbrokerage.com

John L. Clark, SIOR, CRE
President, Real Estate Broker

+1 315.445.8509

jclark@pyramidbrokerage.com

5845 Widewaters Pkwy, Suite 200
East Syracuse, New York 13057

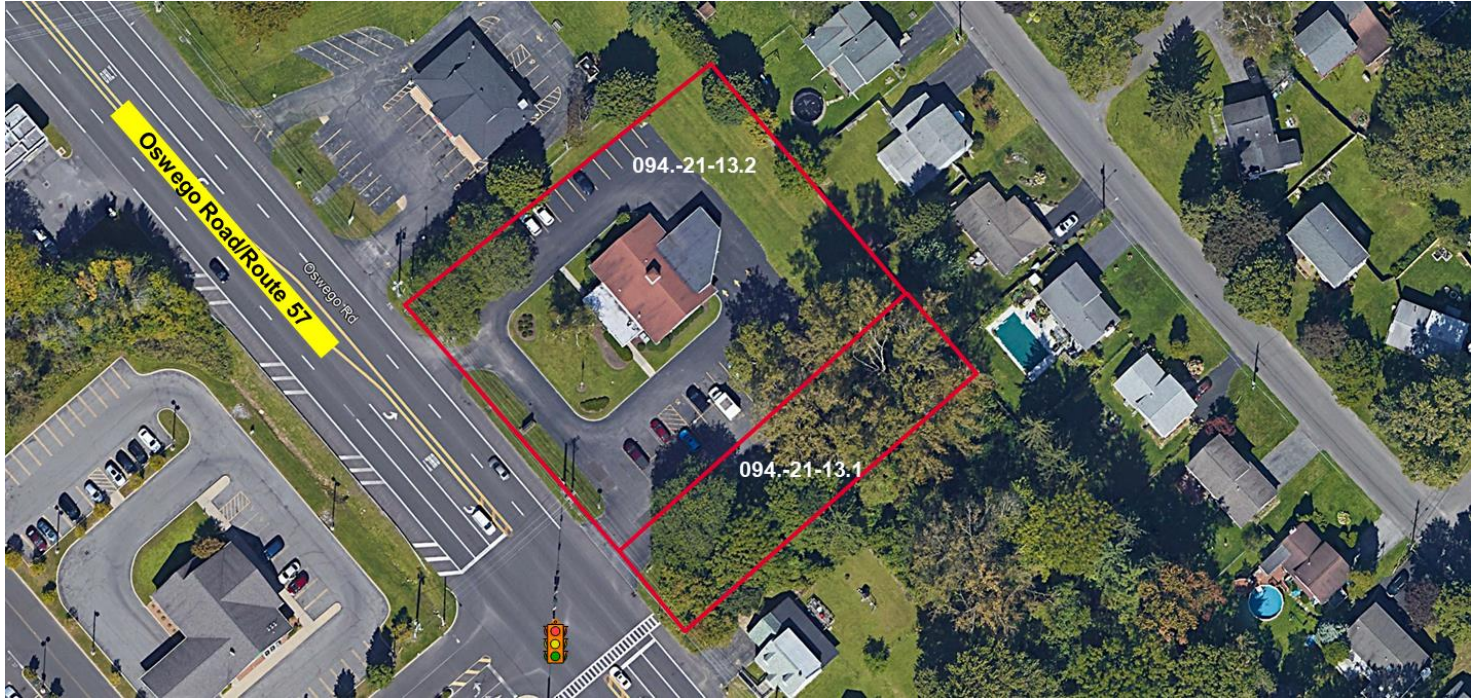
phone: +1 315.445.1030

pyramidbrokerage.com

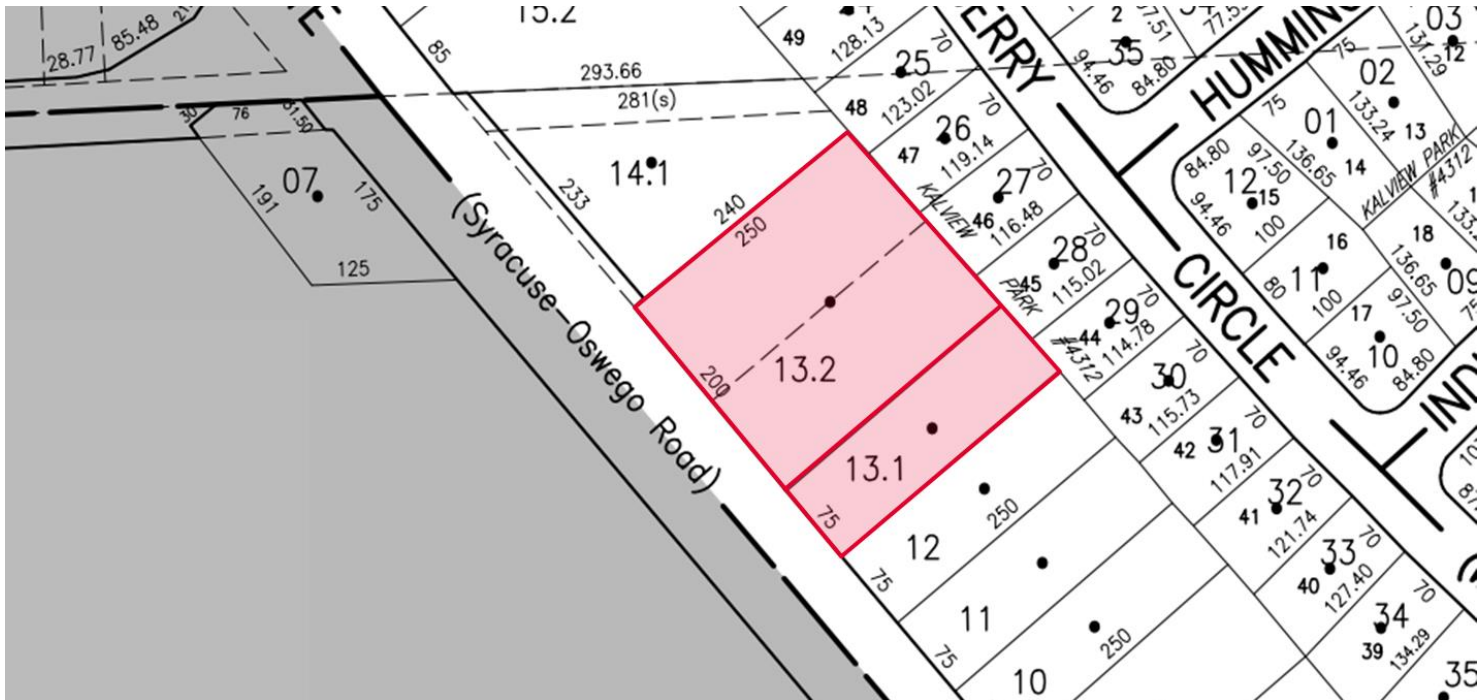
FOR SALE

7538 Oswego Road

Liverpool, New York 13090



Aerial



Tax Map



Teller Area



Behind Teller Area



Open Office



Break Room

FOR SALE

7538 Oswego Road

Liverpool, New York 13090



Drive-through



Drive-through Window



Dedicated Signaled Intersection at Route 57



Monument Sign & Dedicated Signaled Intersection

