



TRI STATE
COMMERCIAL
REAL ESTATE EXPERTS



FOR LEASE | RETAIL SPACE

1,300 SF New Glass Storefront Available in Williamsburg

367 South 4th St, Brooklyn, NY 11211

Shlomi Bagdadi
718.437.6100
sb@tristatecr.com

1,300 SF New Glass Storefront Available in Williamsburg

367 South 4th St, Brooklyn, NY 11211



TRI STATE
COMMERCIAL®
REAL ESTATE EXPERTS

Executive Summary



OFFERING SUMMARY

Available SF: 1,300 SF

Lease Rate: Upon Request

Lot Size: 1,235 SF

Building Size: 3,325 SF

Zoning: R6

PROPERTY OVERVIEW

1,300 SF New Glass Storefront Available in Williamsburg

Highlights:

- Vanilla Box
- Basement/Storage
- New Storefront

LOCATION OVERVIEW

Located in Williamsburg near the Hewes St, M & J trains. In close proximity to the B46 and B60 bus stops. Nearby national tenants include,

- Duane Reade
- Chase
- Capital One
- Walgreens
- Foot locker
- Sprint
- Blink Fitness
- Whole Foods
- & many more!

Broker is relying on Landlord or other Landlord-supplied sources for the accuracy of said information and has no knowledge of the accuracy of it. Broker makes no representation and/or warranty, expressed or implied, as to the accuracy of such information.

Shlomi Bagdadi
718.437.6100
sb@tristatecr.com

Tri State Commercial® Realty Inc // 482 Coney Island Ave // Brooklyn, 11218 // <http://tristatecr.com/>



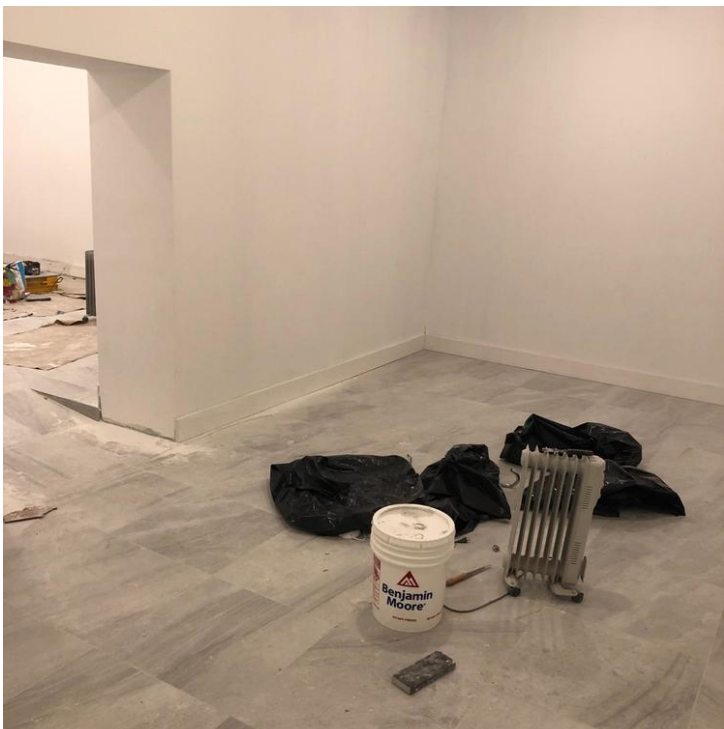
1,300 SF New Glass Storefront Available in Williamsburg

367 South 4th St, Brooklyn, NY 11211



TRI STATE
COMMERCIAL®
REAL ESTATE EXPERTS

Additional Photos



Broker is relying on Landlord or other Landlord-supplied sources for the accuracy of said information and has no knowledge of the accuracy of it. Broker makes no representation and/or warranty, expressed or implied, as to the accuracy of such information.

Shlomi Bagdadi
718.437.6100
sb@tristatecr.com

Tri State Commercial® Realty Inc // 482 Coney Island Ave // Brooklyn, 11218 // <http://tristatecr.com/>



1,300 SF New Glass Storefront Available in Williamsburg

367 South 4th St, Brooklyn, NY 11211



TRI STATE
COMMERCIAL[®]
REAL ESTATE EXPERTS

Location Maps



Broker is relying on Landlord or other Landlord-supplied sources for the accuracy of said information and has no knowledge of the accuracy of it. Broker makes no representation and/or warranty, expressed or implied, as to the accuracy of such information.

Shlomi Bagdadi
718.437.6100
sb@tristatecr.com

Tri State Commercial[®] Realty Inc // 482 Coney Island Ave // Brooklyn, 11218 // <http://tristatecr.com/>



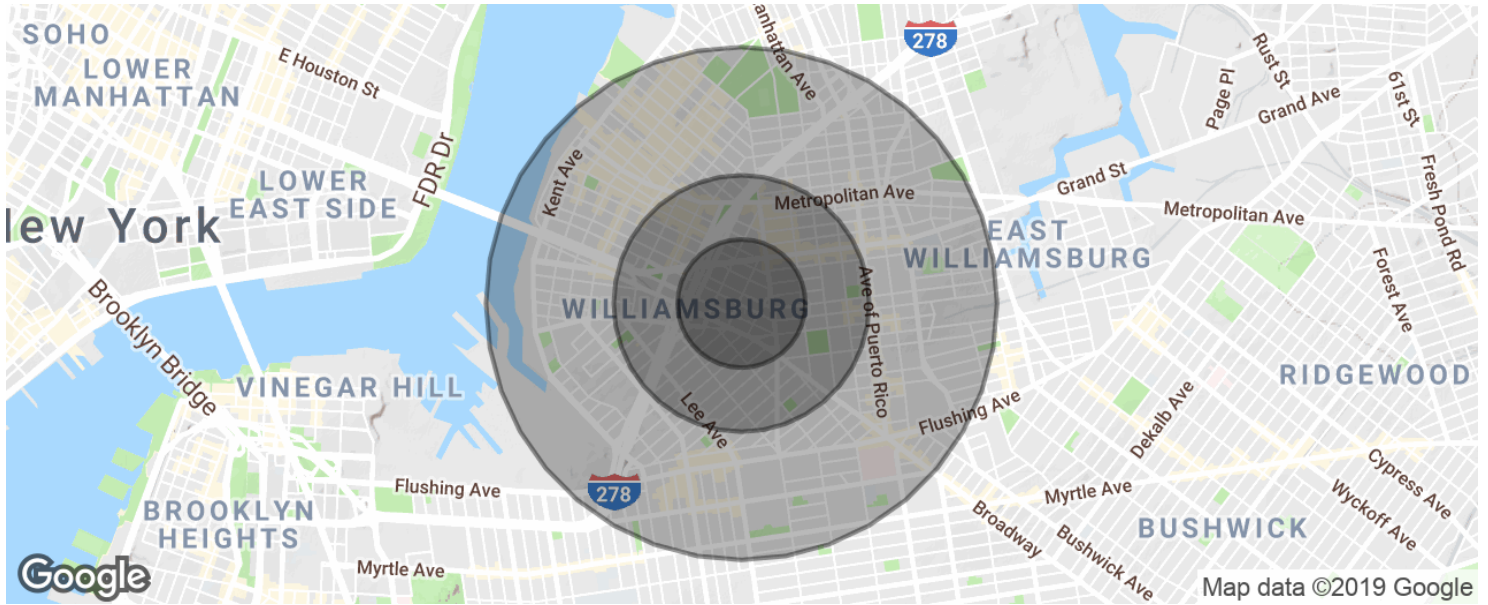
1,300 SF New Glass Storefront Available in Williamsburg

367 South 4th St, Brooklyn, NY 11211



**TRI STATE
COMMERCIAL**
REAL ESTATE EXPERTS

Demographics Map & Report



POPULATION

	0.25 MILES	0.5 MILES	1 MILE
Total population	14,005	52,831	177,152
Median age	28.1	26.1	26.1
Median age (Male)	27.9	25.8	25.2
Median age (Female)	28.6	26.6	27.3

HOUSEHOLDS & INCOME

	0.25 MILES	0.5 MILES	1 MILE
Total households	4,848	17,686	60,822
# of persons per HH	2.9	3.0	2.9
Average HH income	\$47,323	\$46,625	\$49,975
Average house value	\$680,728	\$762,919	\$706,043

* Demographic data derived from 2010 US Census

Broker is relying on Landlord or other Landlord-supplied sources for the accuracy of said information and has no knowledge of the accuracy of it. Broker makes no representation and/or warranty, expressed or implied, as to the accuracy of such information.

Shlomi Bagdadi
718.437.6100
sb@tristatecr.com

Tri State Commercial® Realty Inc // 482 Coney Island Ave // Brooklyn, 11218 // <http://tristatecr.com/>



1,300 SF New Glass Storefront Available in Williamsburg

367 South 4th St, Brooklyn, NY 11211



TRI STATE
COMMERCIAL
REAL ESTATE EXPERTS

Retailer Map



Broker is relying on Landlord or other Landlord-supplied sources for the accuracy of said information and has no knowledge of the accuracy of it. Broker makes no representation and/or warranty, expressed or implied, as to the accuracy of such information.

Shlomi Bagdadi
718.437.6100
sb@tristatecr.com

Tri State Commercial® Realty Inc // 482 Coney Island Ave // Brooklyn, 11218 // <http://tristatecr.com/>

