



1124  
WILSHIRE BOULEVARD

RETAIL SPACE FOR LEASE



**RAFAEL PADILLA**  
310.395.2663 X102  
RAFAEL@PARCOMMERCIAL.COM  
LIC#00960188

**GREG ECKHARDT**  
310.395.2663 X103  
GECKO@PARCOMMERCIAL.COM  
LIC#01255469

**ARTHUR PETER**  
310.395.2663 X101  
ARTHUR@PARCOMMERCIAL.COM  
LIC#0108613

SIZE: APPROXIMATELY 1,680 SQUARE FEET  
RATE: \$4.75 PER SQUARE FOOT PER MONTH, NNN  
(NNN ESTIMATED TO BE \$1.02 PER SF PER MONTH)  
TERM: 3 - 5 YEARS  
PARKING: SHARED ON-SITE PARKING BEHIND  
THE BUILDING



## RETAIL FOR LEASE

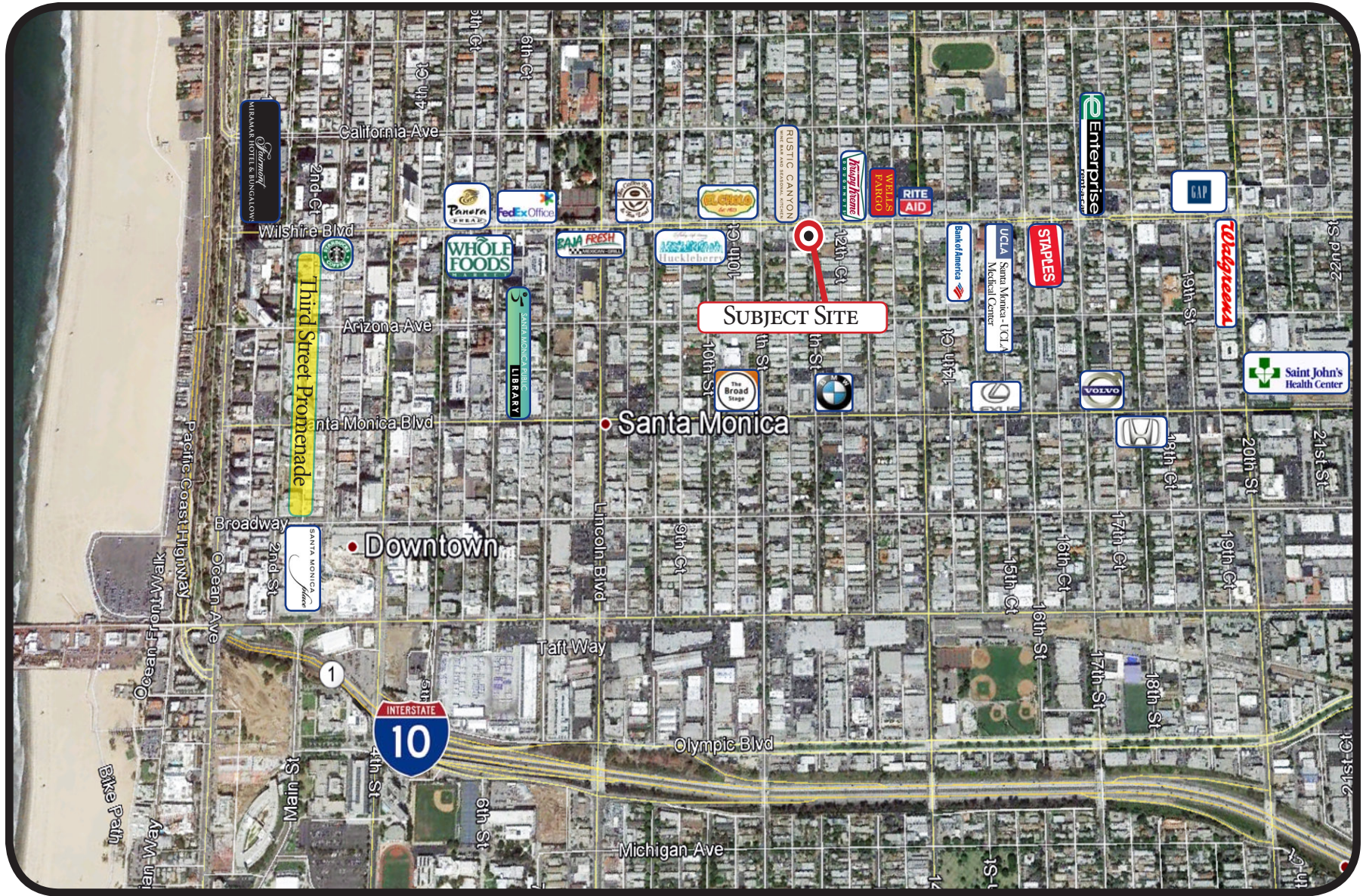
- IMMEDIATE NEIGHBORS INCLUDE DUNKIN DONUTS, CITIZEN SPROUT, MATTHEW PREECE SALON AND ROCK 'N PIES
- PROMINENT SIGNAGE ON MAJOR THOROUGHFARE
- STRONG DEMOGRAPHICS
- LOCATED ON BUSY WILSHIRE BOULEVARD WITH HIGH TRAFFIC COUNTS IN EXCESS OF 33,500 VEHICLES PER DAY
- STRONG TENANT MIX



**RAFAEL PADILLA**  
310.395.2663 X102  
RAFAEL@PARCOMMERCIAL.COM  
LIC#00960188

**GREG ECKHARDT**  
310.395.2663 X103  
GECKO@PARCOMMERCIAL.COM  
LIC#01255469

**ARTHUR PETER**  
310.395.2663 X101  
ARTHUR@PARCOMMERCIAL.COM  
LIC#0108613



**RAFAEL PADILLA**

310.395.2663 X102

RAFAEL@PARCOMMERCIAL.COM

LIC#00960188

**GREG ECKHARDT**

310.395.2663 X103

GECKO@PARCOMMERCIAL.COM

LIC#01255469

**ARTHUR PETER**

310.395.2663 X101

ARTHUR@PARCOMMERCIAL.COM

LIC#0108613

All information furnished is from sources deemed reliable and which we believe to be correct, but no representation or guarantee is given as to its accuracy and is subject to errors and omissions. All measurements are approximate and have not been verified by Broker. You are advised to conduct an independent investigation to verify all information.