

6622

S Southpoint
Drive

for sublease

6,897 SF Class B Office

Jacksonville, Florida



CONRAD BOYLAN

Lic. #3382471

cboylan@primerealtyinc.com

201.602.6403



MCKINNEY
CAPITAL & ADVISORY

KARA PEDERSEN

Lic. #01279767

kpedersen@mckinneycapital.com

858.519.3501

FOR SUBLEASE: 6,897 SF Class B Office in Jacksonville, FL

FEATURES / FLOOR PLAN / LOCATION / GALLERY

6622
S Southpoint
Drive

features

- » Located on the 4th floor
- » Good visibility
- » On-site deli and café
- » Recently remodeled restrooms
- » Recently remodeled atrium with marble finishes, water features and indoor landscaping
- » Ample shared parking and potential to lease additional parking on adjacent property
- » Bank of America branch with drive-through ATM
- » Adjacent to J Turner Boulevard, and proximate to Interstate 95
- » Lease rate negotiable



CONRAD BOYLAN

Lic. #3382471
cboylan@primerealtyinc.com
201.602.6403



MCKINNEY
CAPITAL & ADVISORY

KARA PEDERSEN

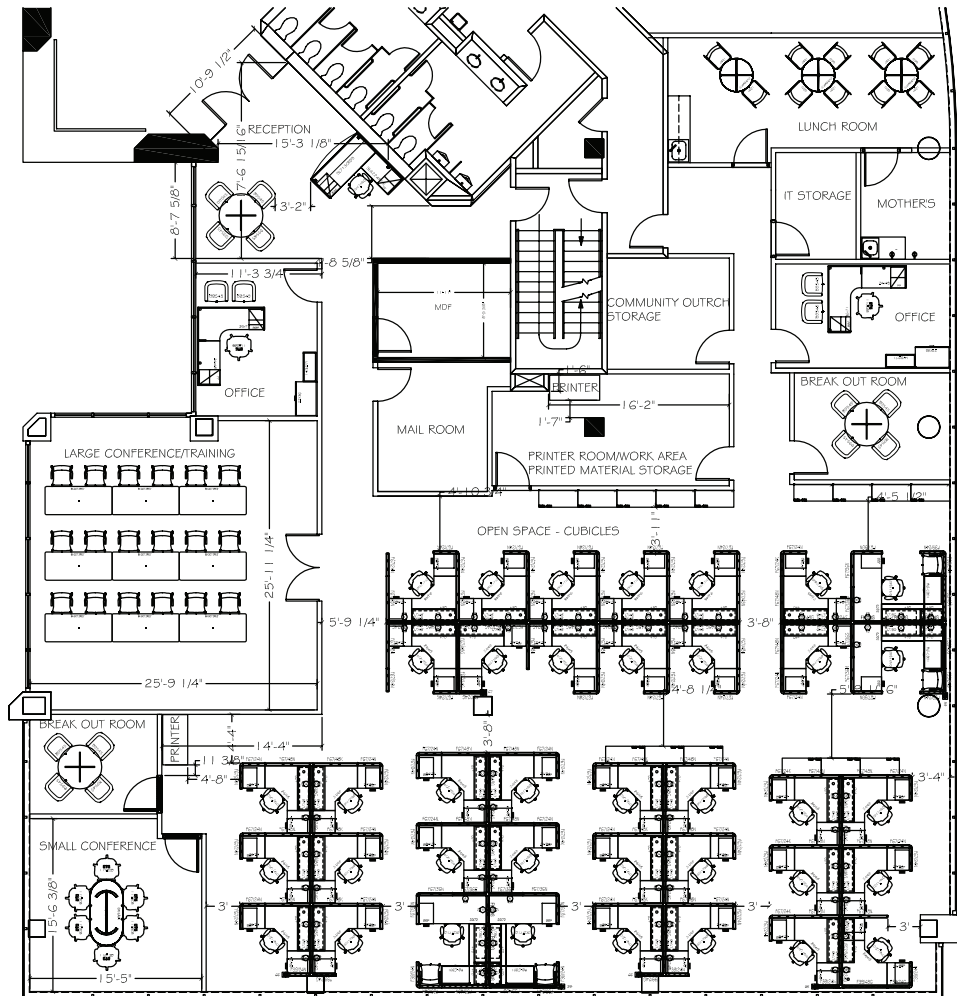
Lic. #01279767
kpedersen@mckinneycapital.com
858.519.3501

FOR SUBLEASE: 6,897 SF Class B Office in Jacksonville, FL

FEATURES / FLOOR PLAN / LOCATION / GALLERY

6622
S Southpoint
Drive

floor plan



CONRAD BOYLAN
Lic. #3382471
cboylan@primerealtyinc.com
201.602.6403



MCKINNEY
CAPITAL & ADVISORY

KARA PEDERSEN
Lic. #01279767
kpedersen@mckinneycapital.com
858.519.3501

FOR SUBLEASE: 6,897 SF Class B Office in Jacksonville, FL

FEATURES / FLOOR PLAN / LOCATION / GALLERY

6622
S Southpoint
Drive

location



CONRAD BOYLAN

Lic. #3382471
cboylan@primerealtyinc.com
201.602.6403



MCKINNEY
CAPITAL & ADVISORY

KARA PEDERSEN

Lic. #01279767
kpedersen@mckinneycapital.com
858.519.3501

FOR SUBLEASE: 6,897 SF Class B Office in Jacksonville, FL

FEATURES / FLOOR PLAN / LOCATION / GALLERY

6622
S Southpoint
Drive



CONRAD BOYLAN

Lic. #3382471
cboylan@primerealtyinc.com
201.602.6403



MCKINNEY
CAPITAL & ADVISORY

KARA PEDERSEN

Lic. #01279767
kpedersen@mckinneycapital.com
858.519.3501