

# UNIVERSITY PARK

SMART BUSINESS



PREMIER OFFICE CAMPUS



LONE STAR  
COLLEGE  
UNIVERSITY  
PARK

# ON-SITE AMENITIES



Second Level Conditioned Walkway Connecting Garage and all Buildings



Lone Star College Conference Center



Spacious Dining Facility and Luby's Food Court

## Flexible Space Options

Up to 225,000 square feet of contiguous office space available for lease - featuring both 25,000 and 50,000 square foot floor plates.

## Convenient Access

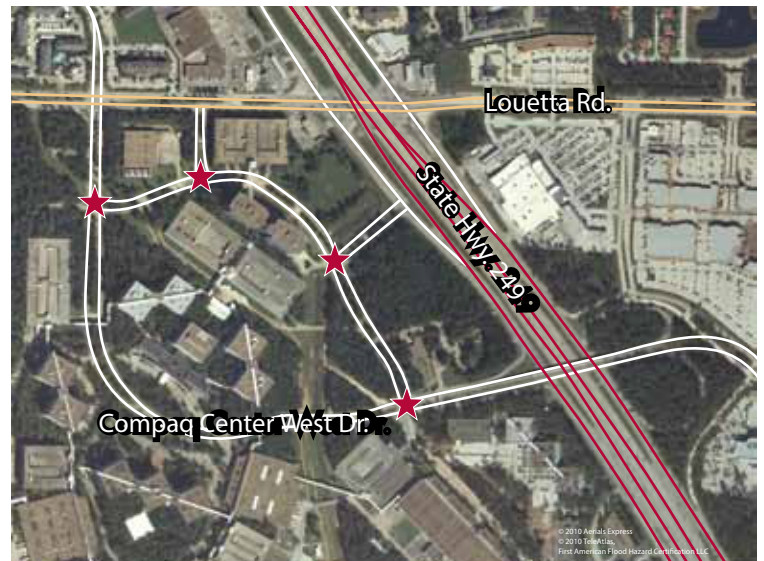
Four access points for easy entrance from major highways and thoroughfares. The buildings, structured parking garage and commons area are connected by a conditioned walkway at the second level meaning you will never have to face the elements.

## Unmatched Amenities

The ultimate employee and customer experience is available at University Park. Take advantage of the fitness center, multiple dining options and programming in our commons areas. Relax and enjoy the unrivaled ambiance of the wooded surroundings. Vintage Park also includes over 20 restaurants, a Star Cinema Grill and HEB.

## Meeting Space Available

The conference center provides 19 meeting rooms, exhibition space and technical support capable of accommodating events for up to 350 participants. No matter your meeting needs, large or small, a conference center concierge can coordinate the perfect event to exceed your expectations. Conference Center site catering by Abby's is also available.

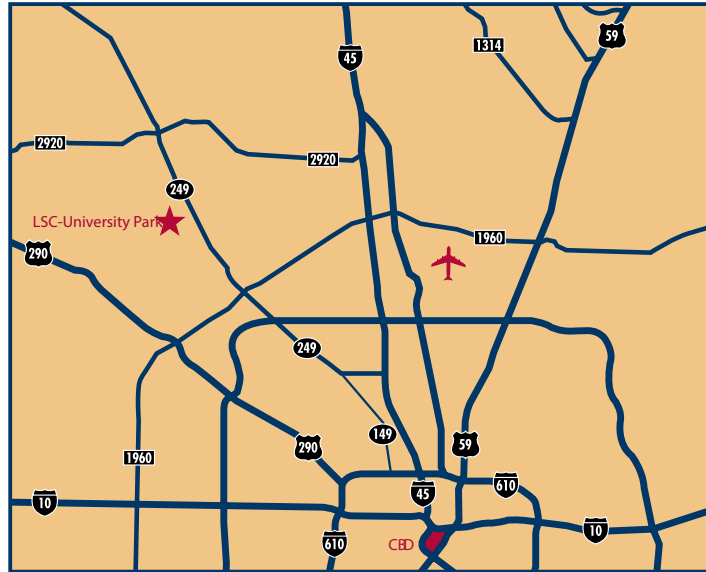


Four Convenient Access Points



## CONVENIENT LOCATION

LSC-University Park is located 27 miles from Houston's Central Business District and 21 miles from Bush Intercontinental Airport. It is easily accessible from State Highway 249 and Louetta Road, only minutes north of the Sam Houston Parkway.



11450 Compaq Center Drive  
Houston, TX 77070

**For more information regarding potential leasing opportunities please contact:**

Mary Caldwell, CCIM, SIOR  
mcaldwell@caldwellcos.com  
281.664.6636

Blake R. Virgilio CCIM, SIOR  
bvirgilio@caldwellcos.com  
281.664.6651

