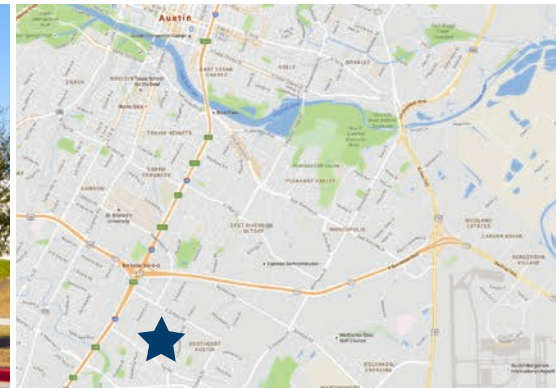




# SOUTHPARK COMMERCE CENTER IV, BLDG. 2

2301 EAST ST. ELMO DRIVE - 78744

[CLICK HERE TO VIEW 360° PROPERTY AERIAL](#)



## AVAILABLE SUITE

SUITE	SQ. FT.
220	119,100

## SPACE FEATURES

- 95% Warehouse
- 5% Office
- 24' Clear Height
- Rear Loading, 35 Dock High Doors
- 110' Truck Court
- ESFR Sprinklered
- End Cap Space
- 6 Edge of Dock



DAVIS BASS

(512) 538-1030

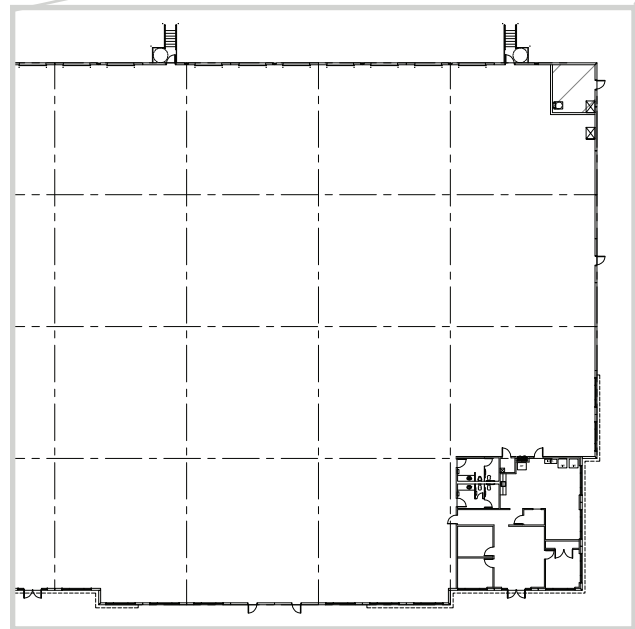
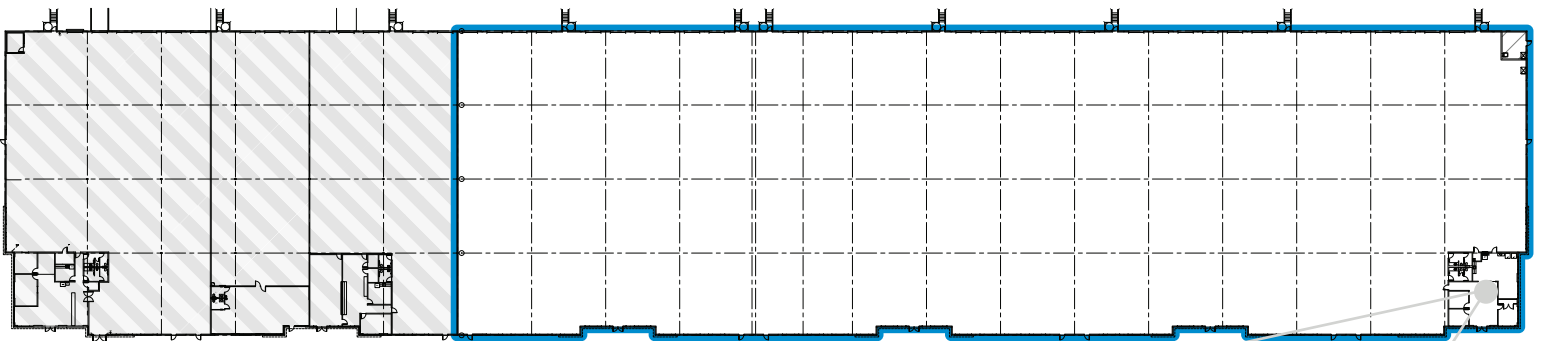
bass@hpitx.com

No warranty or representation, expressed or implied, is made as to the accuracy of the information contained herein, and same is submitted subject to errors, omissions, change of price, rental or other conditions, withdrawal without notice, and to any special listing conditions imposed by the principals.

# SOUTHPARK COMMERCE CENTER IV, BLDG. 2

BUILDING PLAN

**SUITE 220**  
119,100 RSF



DAVIS BASS  
(512) 538-1030  
bass@hpitx.com

*No warranty or representation, expressed or implied, is made as to the accuracy of the information contained herein, and same is submitted subject to errors, omissions, change of price, rental or other conditions, withdrawal without notice, and to any special listing conditions imposed by the principals.*