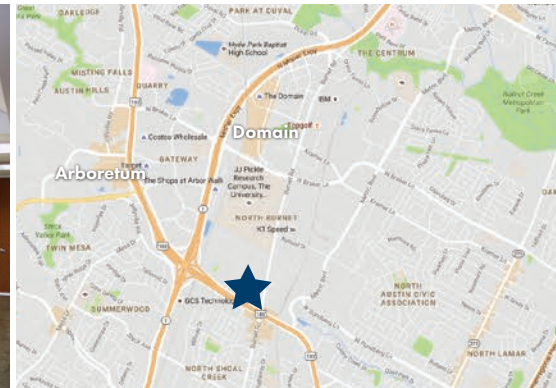




WATERFORD D

9211 WATERFORD CENTRE - 78758

[CLICK HERE TO VIEW 360° PROPERTY AERIAL](#)



AVAILABLE SUITES

SUITE	SQ. FT.
125	4,748

BUILDING FEATURES

- 4:1000 Parking
- Covered Parking Available
- Upgraded Common Area
- Quick Access through Mopac and Hwy 183
- Available Showers and Lockers
- Near Austin Arboretum and Domain



J.D. LEWIS
 (512) 538-0064
 jdlewis@hpitx.com

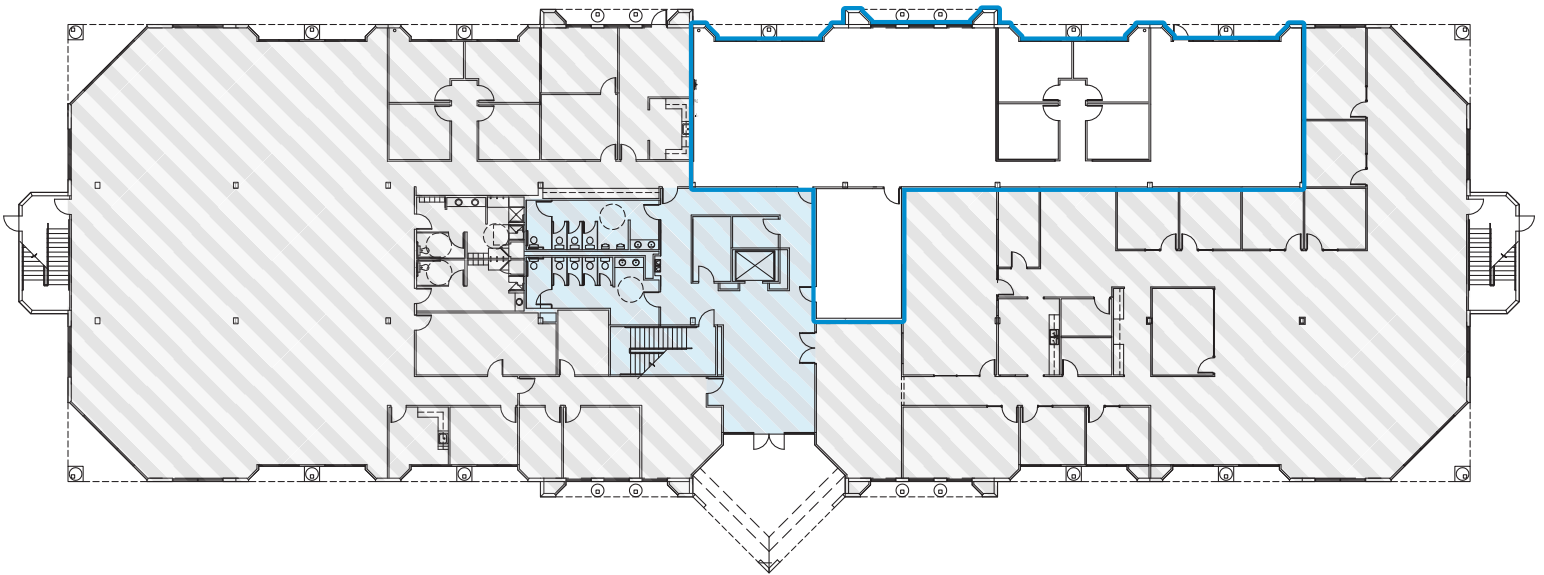
CHRIS PRICE
 (512) 538-1029
 price@hpitx.com



No warranty or representation, expressed or implied, is made as to the accuracy of the information contained herein, and same is submitted subject to errors, omissions, change of price, rental or other conditions, withdrawal without notice, and to any special listing conditions imposed by the principals.

WATERFORD D

1ST FLOOR - FLOOR PLAN

SUITE 125 4,748 RSF



 -- Available Space  -- Not Included  -- Core Elements



J.D. LEWIS
(512) 538-0064
jdlewis@hpitx.com

CHRIS PRICE
(512) 538-1029
price@hpitx.com

No warranty or representation, expressed or implied, is made as to the accuracy of the information contained herein, and same is submitted subject to errors, omissions, change of price, rental or other conditions, withdrawal without notice, and to any special listing conditions imposed by the principals.