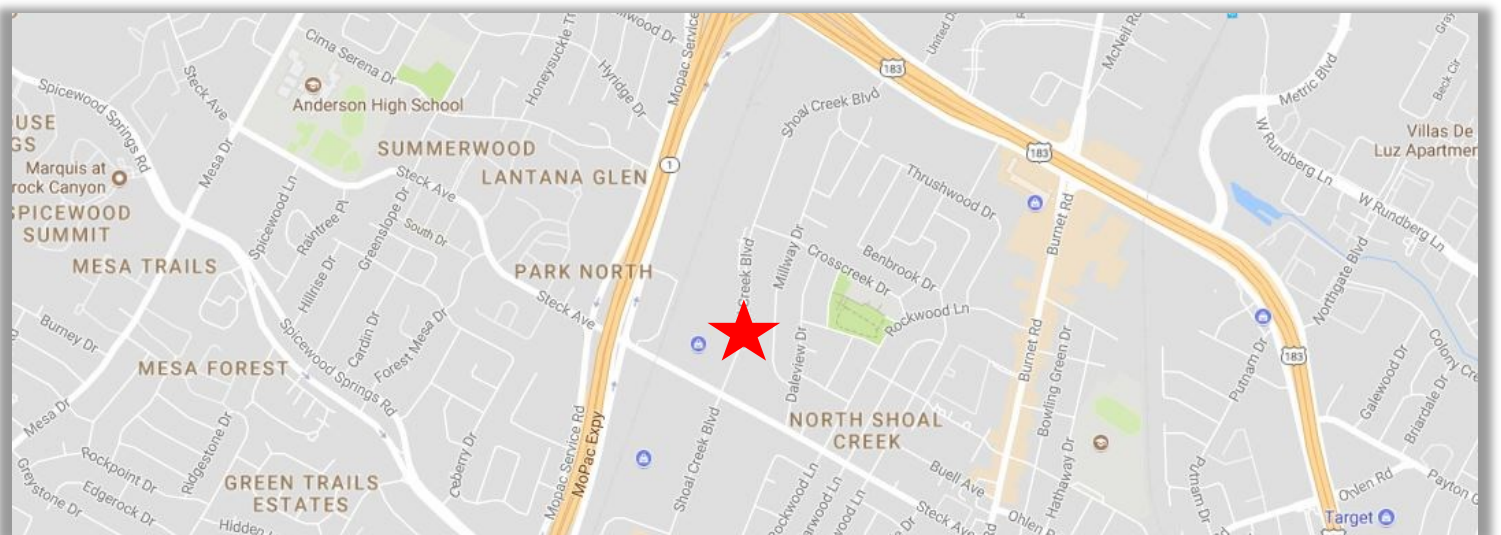




# 8229 Shoal Creek

OFFICE/MEDICAL SPACE - FOR LEASE





- **Great Location and Easy Access to Mopac Expressway**
- **2,990 SF Space Available**
- **End Cap with Signage**
- **Leasable Office and Medical Space**
- **Central location off of Shoal Creek**
- **Close to excellent dining and shopping options along west Anderson lane and burnet road**
- **Call Today to Schedule a Tour!**



**NEARBY**







University  
FEDERAL CREDIT UNION  
*Live Learn Prosper*



Connect Hearing  
YOUR HEARING PROFESSIONALS

For more information please contact:

**Nick Tarantino, CCIM** [nick@tarantino.com](mailto:nick@tarantino.com)

**Sydney Pugh** [spugh@tarantino.com](mailto:spugh@tarantino.com)

502 East 11th St., Suite 400

Austin, Texas 78701

Tel (512) 302-4500, Fax (512) 302-4109

[www.tarantino.com](http://www.tarantino.com)

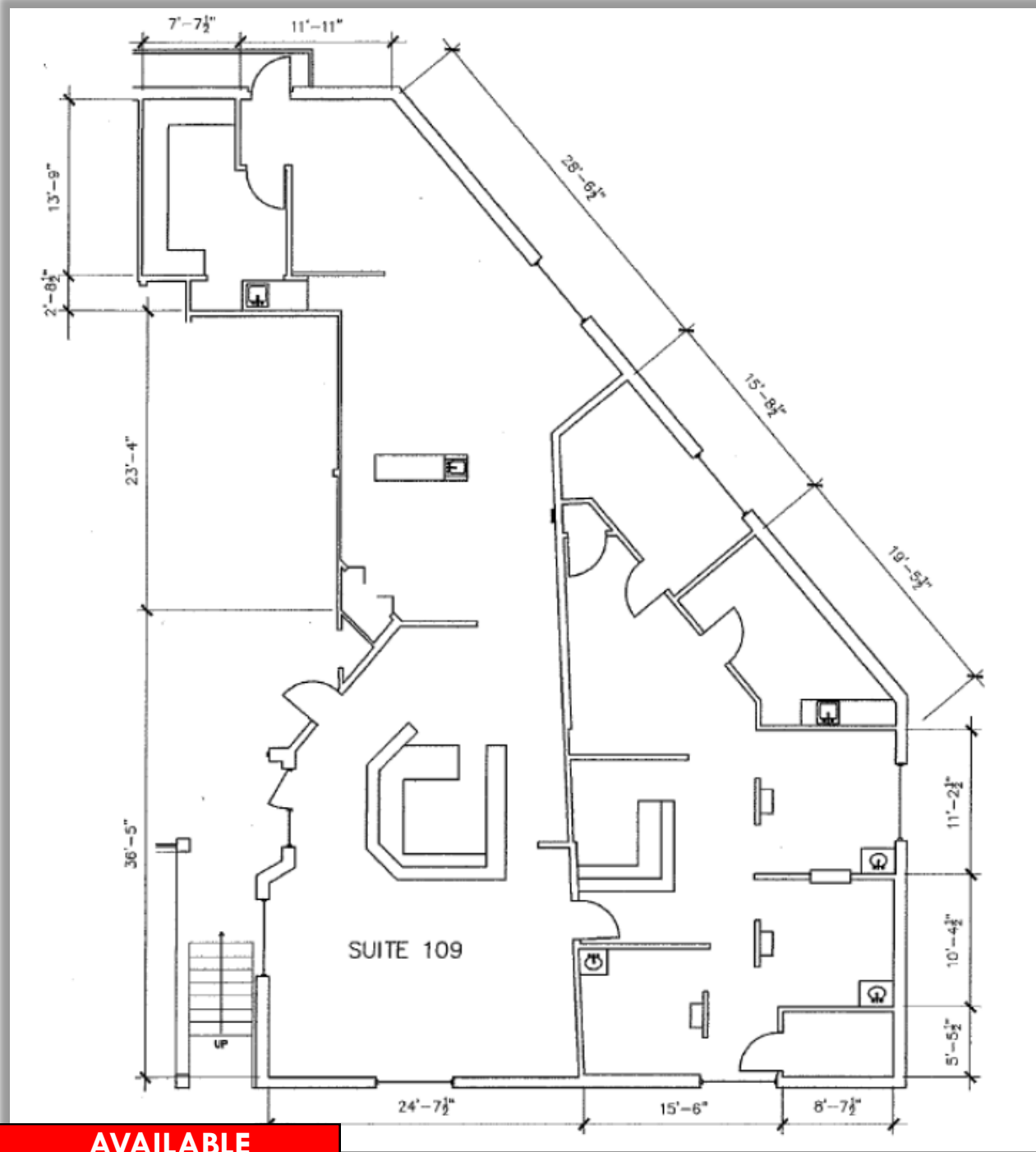


<b>AVAILABLE</b>	
<b>SUITE 109</b>	<b>2,990 SF</b>



# Floor Plan - Suite 109

8229 Shoal Creek



**AVAILABLE**  
**SUITE 109 2,990 SF**

For more information please contact:

502 East 11th St., Suite 400

Austin, Texas 78701

Nick Tarantino, CCIM [nick@tarantino.com](mailto:nick@tarantino.com)

Sydney Pugh [spugh@tarantino.com](mailto:spugh@tarantino.com)

Tel (512) 302-4500, Fax (512) 302-4109

