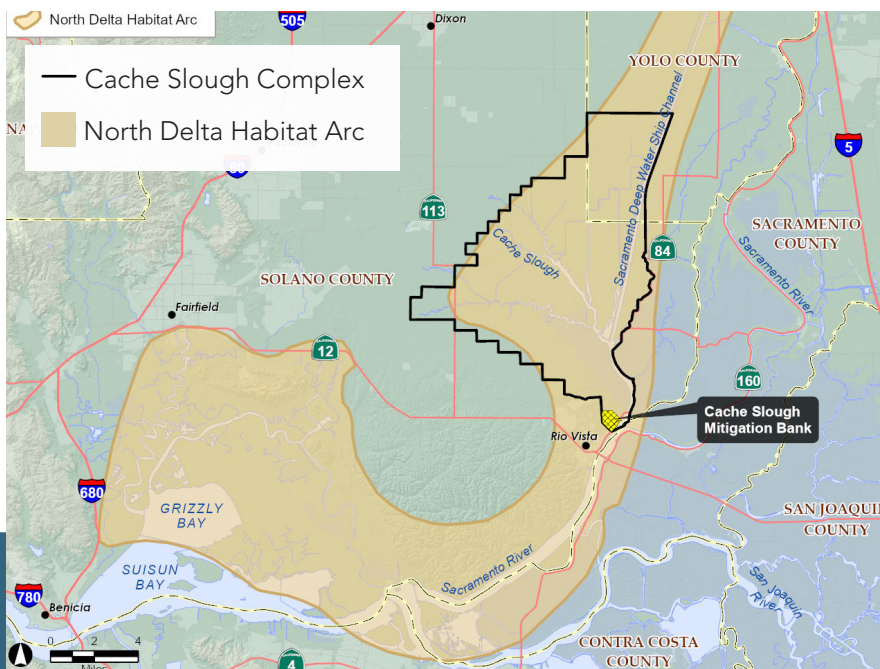




CACHE SLOUGH Mitigation Bank

To address ongoing impacts to listed species that rely on habitats in the Sacramento San Joaquin Delta, Westervelt Ecological Services (WES) proposes the establishment of the Cache Slough Mitigation Bank in Solano County, CA. The 350-acre property is in an ideal location for restoration at the southernmost reach of the Yolo Bypass, at the confluence of Cache Slough, Sacramento River, and Steamboat Slough. The property is located within an area considered to have high potential for tidal restoration and within a prime area to promote the conservation of at-risk species in the Delta known as the Cache Slough Complex situated within the North Delta Habitat Arc. The restoration will create critical off-channel habitat and food web support for species including the Chinook salmon, Central Valley steelhead, Delta smelt, North American green sturgeon, and giant garter snake.



CREDITS

The site will generate approximately 300 credits within the following categories:

- Freshwater Marsh Complex
- Floodplain Riparian
- Shaded Riverine Aquatic
- Bundled Species Credits: Chinook salmon, Central Valley steelhead, Delta smelt, North American green sturgeon, and giant garter snake.

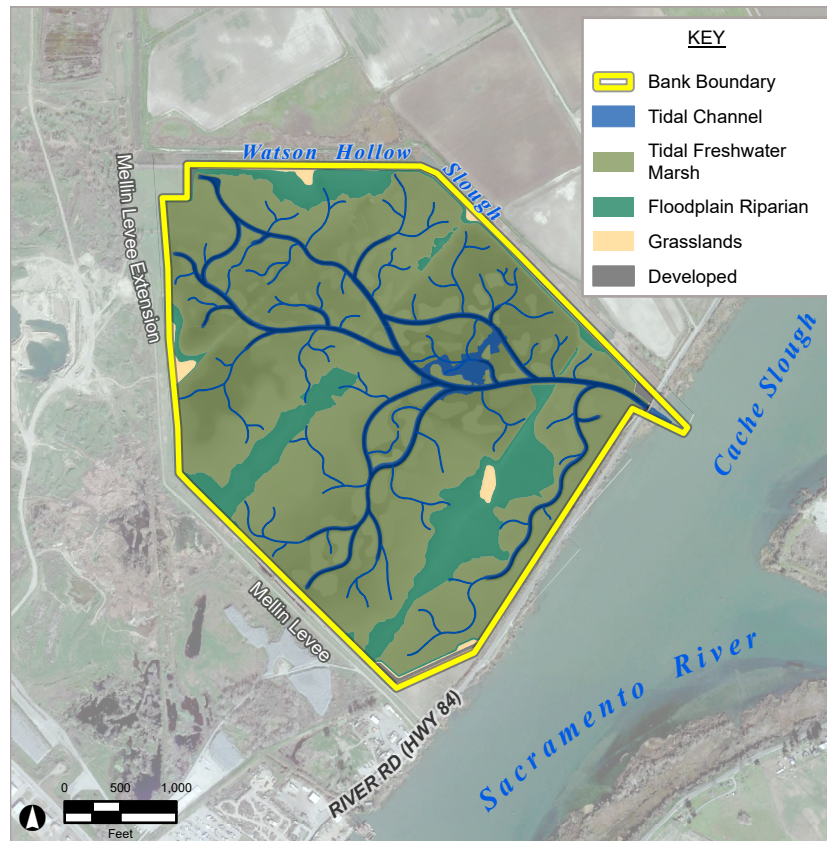
APPROVING AGENCIES

- U.S. Army Corps of Engineers
- U.S. Environmental Protection Agency
- U.S. Fish and Wildlife Service
- National Marine Fisheries Service

ECOLOGICAL VISION

WES plans to restore approximately 300 acres of tidal freshwater marsh and riparian floodplain habitats. To accomplish this concept, a series of open water features, including tidal and subtidal channels, would be excavated throughout the Bank property. The channels would connect directly to Cache Slough/Sacramento River through an opening under SR 84. By allowing full tidal exchange, the Bank will provide fish access, promote nutrient exchange, and provide food web support for aquatic species in the adjacent Cache Slough and Sacramento River. Restoration of floodplain habitat will provide upland refugia and shaded riverine aquatic habitat for a variety of terrestrial, semi-aquatic, and aquatic species.

RESTORATION DESIGN CONCEPT



DESIGN FEATURES

1. Full tidal connection to Cache Slough/Sacramento River.
2. Diverse dendritic tidal channels.
3. Increased topography to support diverse habitats and plant communities.
4. Habitat berms to provide upland buffers.

HISTORIC CONDITIONS

- Historically, the Bank property supported tidal marsh, riparian and wetland meadow habitats.
- In the 1950's, the Bank property was converted to agriculture as part of wide-scale reclamation activities in the Yolo Basin.
- For the last 30 years, the Bank property has been used for cattle grazing and waterfowl hunting.



LEARN MORE
wesmitigation.com

Amanda Dwyer
Business Development Manager
adwyer@westervelt.com
916.646.3644