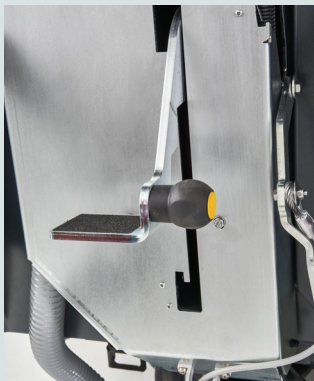


SC901

Unsurpassed Simplicity and Reliability

- Next generation of large walk-behind scrubbers





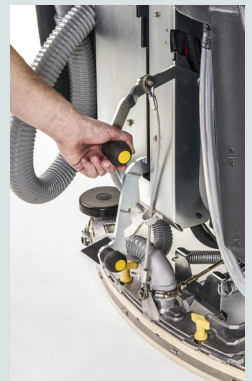
A simple mechanical deck lever removes the complexity, unreliability and service costs associated with alternative methods.



No confusing buttons or switches for a simple and easy to use machine.



Move paddle backwards to go in reverse, frontwards to go forward; it could not be simpler or safer.



Mechanical scrub and vacuum levers for increased reliability, lower total cost of ownership and increased ease of use.

Advance SC901 large walk-behind scrubber

The SC901 large walk-behind scrubber removes the complexity associated with floor cleaning equipment, especially for the building service contractor. The absence of sophisticated electronics and excessive features makes it simple to use by anyone, provides maximum uptime and reliability and lowers your overall cost to clean.

With the Advance SC901, there has never been a more solid and reliable path toward perfectly clean floors.

The SC901 tackles your toughest cleaning challenges consistently, at the lowest possible cost

The machine is ideal for applications such as; government buildings, transportation facilities, manufacturing plants, general warehouses, municipalities, beverage distribution and processing plants.



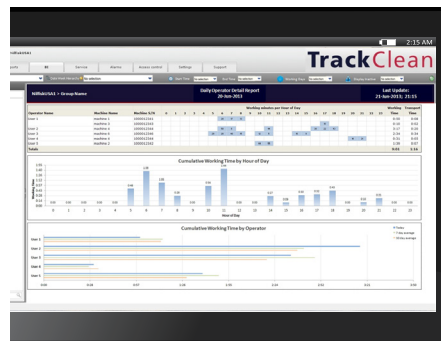
1. Minimal electronics for increased reliability and lower total cost of ownership
2. Built with hand select components from top manufacturers for long lasting durability
3. Essential functions are uncomplicated for the utmost in reliability
4. Powerful motors will provide years of trouble-free operation and exceptional cleaning performance
5. Simplified user interface eliminates operator confusion and makes operator training fast and easy

ecoflex™ system



The EcoFlex™ System provides the most flexible cleaning solution for today's cleaning applications with full control over water and chemical consumption.

TrackClean™



Increase productivity with the available TrackClean™ asset management technology installed on your fleet of machines to monitor, verify and improve operational effectiveness.



Convenient built in squeegee hanger allows for easy storage and transportation of the squeegee mechanism.

Smart cleaning

Our products are designed using innovative technologies that increase productivity and drive down the cost to clean.

Service solutions

Maintain peak performance with Nilfisk OEM Parts to lower your overall cost of ownership.

Technical specifications

| Description | SC901 28D | SC901 34D | SC901 32C |
|-----------------------------------------------------|-------------------------------------------------------|-------------------------------------------------------|-------------------------------------------------------|
| Head type | Disc | Disc | Cylindrical |
| Cleaning width | 28 in (71 cm) | 34 in (86 cm) | 32 in (81 cm) |
| Maximum scrub and transport speed | 3.2 mph (5.15 km/hr) | 3.2 mph (5.15 km/hr) | 3.2 mph (5.15 km/hr) |
| Productivity per hour maximum (ISSA 540) | 28,028 ft ² /hr (2,604 m ² /hr) | 34,034 ft ² /hr (3,162 m ² /hr) | 31,915 ft ² /hr (2,965 m ² /hr) |
| Drive motor | 0.5 hp | 0.5 hp | 0.5 hp |
| Solution tank | 30 gal (114 l) | 30 gal (114 l) | 30 gal (114 l) |
| Recovery tank | 32 gal (121 l) | 32 gal (121 l) | 32 gal (121 l) |
| Flow rate | 0-1 GPM (3.8 LPM) | 0-1 GPM (3.8 LPM) | 0-1 GPM (3.8 LPM) |
| Brush motor | 0.75 hp | 0.75 hp | 0.75 hp |
| Brush speed | 250 rpm | 250 rpm | 900 rpm |
| Brush down pressure | 80, 145, 200 lb (36, 66, 91 kg) | 80, 145, 200 lb (36, 66, 91 kg) | 75, 100, 125 lb (34, 45, 57 kg) |
| Vacuum motor | 0.95 hp | 0.95 hp | 0.95 hp |
| Maximum vacuum motor waterlift | 71 in H ₂ O (17.7 kPa) | 71 in H ₂ O (17.7 kPa) | 71 in H ₂ O (17.7 kPa) |
| Maximum vacuum motor air flow | 96 CFM (2,718 LPM) | 96 CFM (2,718 LPM) | 96 CFM (2,718 LPM) |
| Sound level (IEC, ISO 11201) | 68 dBA | 68 dBA | 69 dBA |
| Width without squeegee | 30.3 in (77 cm) | 30.3 in (77 cm) | 30.6 in (77.7 cm) |
| Width with squeegee | 41.8 in (106.6 cm) | 41.8 in (106.6 cm) | 41.8 in (106.6 cm) |
| Height | 44.8 in (113.8 cm) | 44.8 in (113.8 cm) | 44.8 in (113.8 cm) |
| Length | 65.4 in (166 cm) | 67.4 in (171 cm) | 63.1 in (160.3 cm) |
| Floor loading right front | 147 PSI (1.0 N/mm ²) | 128 PSI (0.88 N/mm ²) | 155 PSI (1.1 N/mm ²) |
| Floor loading left front | 107 PSI (0.74 N/mm ²) | 132 PSI (0.91 N/mm ²) | 128 PSI (0.88 N/mm ²) |
| Floor loading right rear | 205 PSI (1.4 N/mm ²) | 432 PSI (3.0 N/mm ²) | 245 PSI (1.7 N/mm ²) |
| Floor loading left rear | 521 PSI (3.6 N/mm ²) | 640 PSI (4.4 N/mm ²) | 416 PSI (2.9 N/mm ²) |
| Gross weight (310 Ah batteries, full solution tank) | 1,189 lb (539.3 kg) | 1,206 lb (547 kg) | 1,235 lb (560 kg) |
| Gradeability transport and cleaning | 2%, 1.15 degrees | 2%, 1.15 degrees | 2%, 1.15 degrees |
| Battery options (36V, 6 ea, 6V) | 242 Ah wet, 310 Ah wet, 255 Ah AGM | 242 Ah wet, 310 Ah wet, 255 Ah AGM | 242 Ah wet, 310 Ah wet, 255 Ah AGM |

Specifications are subject to change without notice.

Accessories



All Models

- Squeegee blade kit, genuine LINATEX® (pn 56115333)
- Squeegee blade kit, polyurethane (pn 56115335)
- Squeegee blade kit, natural gum rubber (pn 56115334)
- Two replacement keys (pn 1462887000)
- Single point battery watering kit (pn 56314981)
- TrackClean with no operator ID key (pn 56115417)
- TrackClean with operator ID key (pn 56115416)

Model Specific

- Prolene brush for 28D (pn 56505804)
- 180 MidLite Grit brush for 28D (pn 56505808)
- Pad holder for 34D (pn 56505780)
- Prolene brush for 34D (pn 56505784)
- 180 MidLite Grit brush for 34D (pn 56505788)
- Prolene cylindrical brush for 32C (pn 56407475)
- 180 MidLite Grit cylindrical brush for 32C (pn 56407476)
- Pad holder for 28D (pn 56505800)

©2019, Nilfisk, Inc. Printed in U.S.A., Form L1691A, 4-19

Nilfisk, Inc.
9435 Winnetka Avenue North
Brooklyn Park, MN 55445
www.nilfisk.us
Phone 800-214-7700
Fax 800-989-6566

Nilfisk Canada Co.
240 Superior Boulevard
Mississauga, Ontario, Canada L5T 2L2
www.nilfisk.ca
Phone 800-668-8400
Fax 800-263-5111

 **Advance**
by Nilfisk