



Contact a rep. today!
281-446-8020 | info@lrpus.com

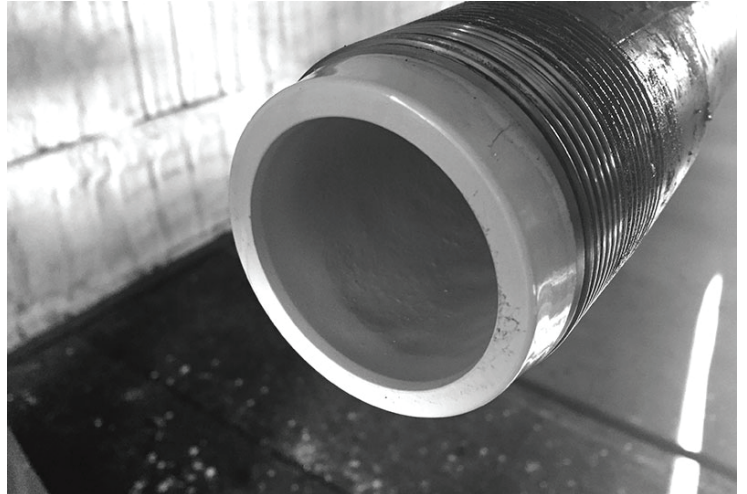
LRP LINED TUBING PRODUCT

LightningFlo Tubular Linings

LightningFlo™ Tubular Lining is a thermoplastic liner, mechanically inserted & bonded to the ID of the tubing joint allowing the liner to be installed inside of both new & used tubing. LightningFlo™ has been proven to dramatically reduce failures due to corrosion, and erosion in a wide variety of well conditions.

LightningFlo™ LF60 is comprised of High Density Polyethylene (HDPE) resin, designed to handle common well environments with lower temperatures and levels of H₂S and Co₂.

LightningFlo™ LF99 is a high performance Polyethylene (PE) resin that allows it to be applied to higher temperature wells with more aggressive fluids and low concentrations of H₂S and Co₂. LightningFlo™ LF115 is a high performance Polyketone (PK) based resin that allows application in high temperature wells and salt water disposal wells with more aggressive fluids and higher concentrations of H₂S and Co₂. LightningFlo™ LF170 is an ultra-high performance Polyphenylene Sulfide (PPS) based resin that allows application in ultra-high temperature deep wells with more aggressive fluids and high concentrations of H₂S and Co₂. Extended, epoxy based, coated couplings are recommended to protect the exposed coupling area between joint.



Specifications

Product Name	Material Type	Max Temp.	Dimensions	H ₂ S	Co ₂
LightningFlo™ LF60	HDPE	140° F	2 3/8" - 4 1/2"	2%	10%
LightningFlo™ LF99	HDPE - Modified	210° F	2 3/8" - 4 1/2"	2%	10%
LightningFlo™ LF115	PK - Modified	240° F	2 3/8" - 4 1/2"	5%	20%
LightningFlo™ LF170	PPS - Modified	340° F	2 3/8" - 4 1/2"	5%	20%
Drift IDs with Liner	2 3/8" = 1.6"	2 7/8" = 2.0"	3 1/2" = 2.50"	4 1/2" = 3.40"	

ADVANTAGES

- ➔ Superior chemical and corrosion resistance.
- ➔ Erosion and abrasion resistance, tough and flexible.
- ➔ Not easily damaged utilizing downhole tools.
- ➔ Very low friction co-efficient.
- ➔ Liner will not flake, crack or chip.
- ➔ 100% holiday free.

HIGHLIGHTS

- ➔ Class 1, 1A, 11, 111 injection and disposal wells.
- ➔ Vertical, deviated, horizontal and slant wells.
- ➔ Chemical injection strings.
- ➔ Frac and N₂ tubing strings.