

Supply Chain & Transportation

Air & Space Transportation • Ground & Rail Transportation • Maintenance & Repair • Marine Transportation • Planning & Logistics • Purchasing & Warehousing



Building & Moving

Promising Progressive Career Pathways Map

Education
(Skills/
Knowledge)



Work-Based
Learning



Local Career
Opportunities

Middle School

Middle School Core + Electives

High School

KPS High Schools +
Career and Technical Education
CCC – Supply Chain, Automotive
Technology, Heavy Equipment Maint.

Early/Middle College

Automotive Undercar Systems, General Auto.
Service, Auto Brake Systems, Auto Steering &
Suspension, Aviation Tech.

Community College

Skill-Based Credentials

General Auto., Auto Engine Repair, Airport
Mgt., Aircraft Dispatching and Scheduling,
Auto Automatic Trans/Azle, Auto Brake
Systems, Auto Electrical/Electronic Systems,
Auto Engine Performance

Associate of Arts and Sciences

Automotive Drivability Systems, Automotive
Undercar Systems, Aviation Technology

University

Bachelor of Arts

Aerospace, Aeronautical,
Astronautical/Space Engineering;
Automotive Engineering; Logistics,
Materials, and Supply Chain Management

EDP (K-12)

Dual Enrollment Choices

2+2 Transfer Programs

Job Shadowing, Co-Ops, Internships,
Apprenticeships, Summer Jobs

Internships,
Apprenticeships,
Full- and Part-Time Jobs

Internships,
Apprenticeships,
Full- and Part-Time Jobs

Heavy and Tractor-Trailer Truck Drivers	\$50,530
Production, Planning, and Expediting Clerks	\$51,920
Highway Maintenance Workers	\$49,940
First-Line Supervisors of Transportation and Material Moving Workers	\$38,510

Automotive Service Technicians and Mechanics	\$46,210
First-Line Supervisors of Mechanics, Installers, and Repairers	\$75,580
Bus and Truck Mechanics and Diesel Engine Specialists	\$51,370
Mechanical Engineering Technologists and Technicians	\$56,770

Purchasing Managers	\$127,440
Transportation, Storage, and Distribution Managers	\$88,830
Logisticians	\$74,520
Industrial Production Managers	\$109,930
Buyers and Purchasing Agents	\$66,610

Design Your Path to Your Promise
— Explore Where You Can Go.

Kalamazoo Public Schools



Supply Chain and Transportation

Design Your Path to Your Promise — Here's How You Can Get There.

MIDDLE SCHOOL	English Language Arts	Math	Science	Social Studies	World Language	Enrichment	Career Readiness	Elective Focus
	English	6 th Grade Math or Accelerated Math	6 th Grade Science	Social Studies	Mandarin Chinese	Physical Ed./Band, Orchestra, or Choir	Life Skills	Tech Smart
	English	7 th Grade Math or Accelerated Math	7 th Grade Science	Social Studies	Spanish for Beginners	Physical Ed./Band, Orchestra, or Choir	Life Skills	Tech Smart
	English	8 th Grade Math or Algebra	Science/Robotics	Social Studies	Spanish 1	Physical Ed./Band, Orchestra, or Choir	Life Skills	Tech Smart

HIGH SCHOOL	English Language Arts	Math	Science	Social Studies	World Language	Enrichment	Career Readiness	Elective Focus
	English 9 / Honors English	Algebra 1 or Geometry	Environ. Science & Biology (CEB)	World History	Mandarin / Spanish	PE	Tech Smart	Band, Orchestra, or Choir or other career programs below.
	English 10 / Honors English	Geometry or Algebra II	Biology (DEE) & Chemistry	US History	Mandarin / Spanish	Health	College/Career Readiness	
	English 11 A or Honors or AP	Algebra II or Personal Finance	Physics	Gov or AP Gov	Mandarin / Spanish	Skills for Success	Economics	
	College Eng. 12 or Honors Eng.	Personal Finance or Math Modeling	Science Elective	Social Studies Elective	Mandarin / Spanish	Fine Arts	Link Crew Leadership	

Grade	Possible Career-Connected Pathway Choices		Dual Enrollment Courses	Postsecondary Programs/Majors for Occupations in this Career Cluster	
9	Automotive Technology	Supply Chain	<ul style="list-style-type: none"> Shop Fundamentals Ethics & Employability Skills Intro to Automotive Electrical Supervisory Leadership Certificate Interpersonal Communication 	Certificates, Associate's Degrees, and Apprenticeships <ul style="list-style-type: none"> Automotive Undercar Systems, AAS General Automotive Cert. Auto Engine Repair, COA Aviation Technology, AS Aircraft Dispatching and Scheduling Cert. Airport Management Cert. 	Bachelor's and Advanced Degrees <ul style="list-style-type: none"> Supply Chain Management Management Aviation Management and Operations Aviation Technical Operations
10-12	Link Crew Leadership	Aviation Technology I & II			
10-12	International Business	Skills for Success			
12	Mechatronics: Robotics & Automation	International Business			

Kalamazoo Public Schools

College and Career Awareness & Exploration Resources

Higher Education



Early/Middle College Programs

Kalamazoo County Early/Middle College (EMC) is an innovative early college program, which gives students the opportunity to earn an associate degree or certificate with an additional year of high school.



Kalamazoo Valley Community College

Kalamazoo Valley Community College seeks to provide every student with clear, flexible program options that provide a mix of educational skills and experiences that will prepare students for advanced coursework at top universities and meaningful opportunities for employment in a changing world.



Kalamazoo College

Kalamazoo College offers qualified high school students the opportunity to enroll in courses while concurrently enrolled in high school during the fall, winter, and spring terms.



Western Michigan University

Dual enrollment through Early College Programs at WMU provides eligible high school students with credits that may be applied toward high school graduation requirements, as well as a college or university program.



The Kalamazoo Promise

Choosing a career path is one of the biggest and most important decisions you'll ever make. The good news is that The Promise is here to help you find and pursue the career path that fits you best.

Local Career Training Programs



Career Launch Kalamazoo

This modernized Youth Apprenticeship Program that provides flexible occupational training programs that cultivate well-educated, highly skilled workers able to meet the demands of a competitive global economy in careers that are in high demand.



Kalamazoo RESA Career Connect Campus

New in the 2025-2026 school year, students will have the opportunity to participate in programs at the Career Connect Campus (CCC). The inaugural class of students at the CCC will learn from industry experts in a new, state-of-the-art facility.



Teach Kalamazoo

Kalamazoo's Grow Your Own (GYO) Teacher Residency program includes apprenticeships and numerous on-ramps into the teaching profession for undergraduate and graduate students, staff, parents, paraprofessionals, for anyone with an existing bachelor's degree, and/or anyone who is interested in entering the honorable and fulfilling profession of teaching.

Labor Market Tools



Michigan Pathfinder

Pathfinder uses current labor market, wage, and institutional data and metrics to help you create an individualized career roadmap. This free tool provides information to students, parents, and guidance staff to make informed choices about educational and career options.



Pure Michigan Talent Connect

Michigan's free online career exploration tool that provides information on in-demand careers and the degrees or credentials needed to pursue them.

College & Career Exploration and Resources



[Xello Career Exploration](#)

Kalamazoo Public Schools uses the Xello platform so students in grades K-12 can build self-knowledge and explore options beyond high school.



[Michigan Career Development Model](#)

The Michigan Career Development Model (MCDM) is a framework, guided by legislation that engages school communities, students, and their support networks in intentional and meaningful career awareness, exploration, and preparation.



[Advance CTE National Career Clusters Framework](#)

The National Career Clusters® Framework provides a shared structure and language for CTE program design across the United States. The new framework provides meaningful career exploration and preparation experiences through Career Technical Education (CTE) that prepare students for the changing and interconnected world of work.



[Michigan Pathfinder](#)

Pathfinder provides valuable information to help students make informed choices about educational and career options.



[O*NET Online](#)

O*Net provides a collection of resources to inform students' college and career journeys: a Career Exploration Tool, O*NET Interest Profiler, My Next Move, Career One Stop, and Get My Future.



[SAT/PSAT – College Board](#)

The SAT and PSAT are standardized tests meant to show colleges and universities how prepared students are for college by measuring key skills like reading comprehension, computational ability, and clarity of expression.



[EBSCO Learning Express](#)

EBSCO LearningExpress provides online platforms for academic skill building, standardized test preparation, and career-oriented digital content. It helps students prepare for college, explore careers, and accelerate their journey into careers.



[Credential Center](#)

Certifications demonstrate for employers that job candidates have specific skills or knowledge in an occupation, industry, or technology. This site helps students explore training associated with certifications and credentials.



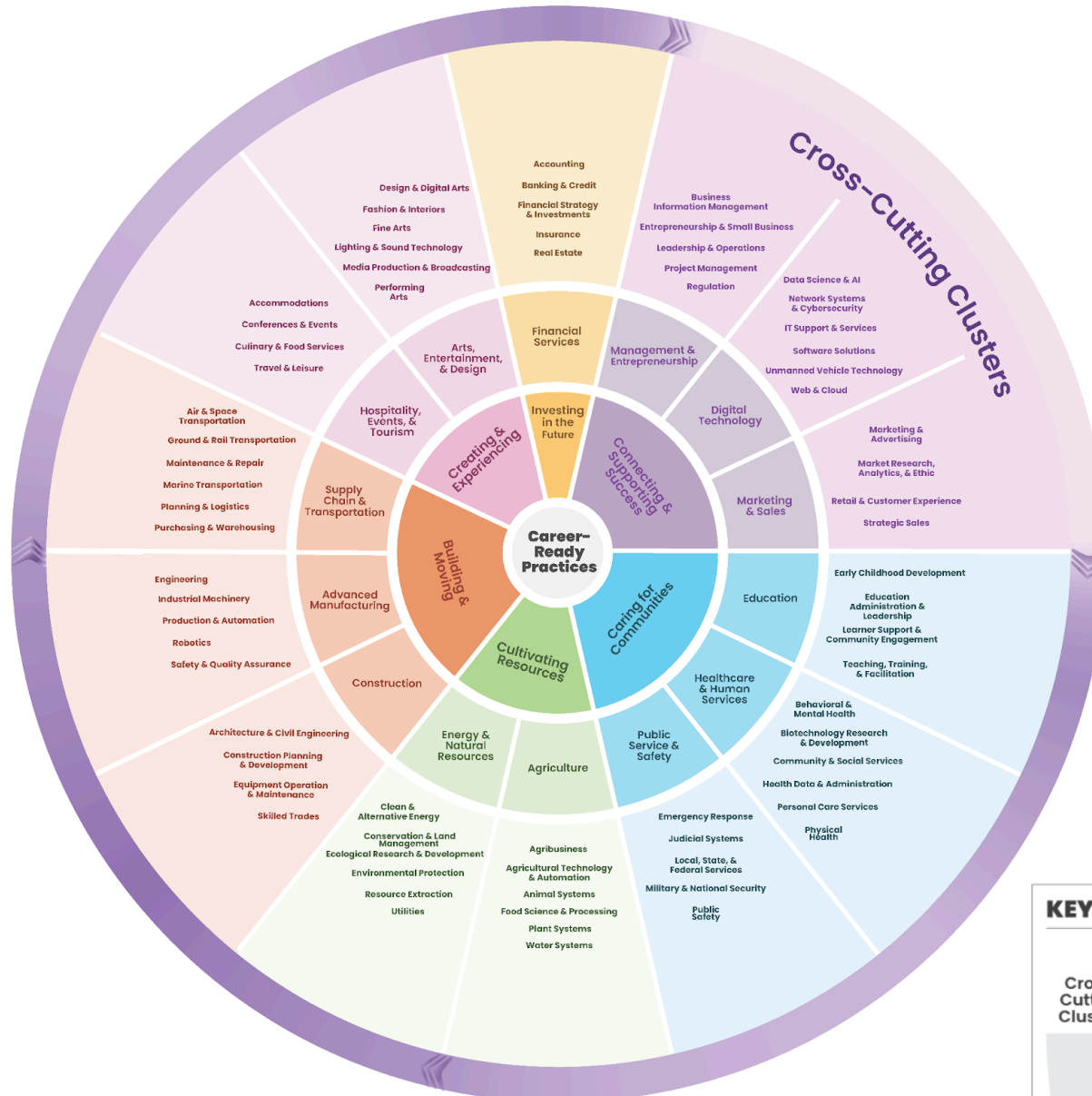
[Apprenticeship USA](#)

Discover apprenticeships across industries, how programs are started by employers, and how to become an apprentice.

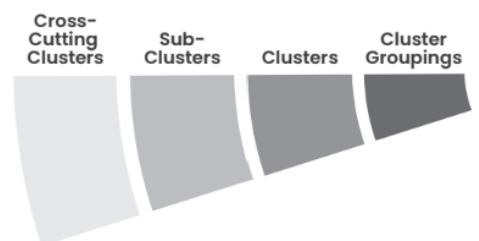


[ASVAB Career Exploration](#)

The Armed Services Vocational Aptitude Battery (ASVAB) is a multiple-aptitude battery that measures developed abilities and helps predict future academic and occupational success in the military.



KEY



The Career Clusters logo and its extensions are registered trademarks of Advance CTE. Our use of them does not imply an affiliation with or endorsement by Advance CTE.

Supply Chain & Transportation: *Driving Efficiency & Streamlining Tomorrow's Transport*

Cluster Definition: The Supply Chain & Transportation Career Cluster encompasses the transfer, coordination, and management of goods from production to consumption, ensuring efficient movement across various modes of transportation including air, ground, and water, as well as maintenance of the respective transport modes. This Cluster integrates logistics and distribution networks to facilitate the seamless flow of materials and products, playing a crucial role in global commerce, economic development, and community health.

Sub-Clusters

Example Programs of Study

Air & Space Transportation: Careers related to the design, operation, and management of both air and space transportation, including air cargo and passenger services, as well as space exploration and satellite operations. This field incorporates the maintenance of electrical equipment such as radios, navigation equipment, and autopilot systems. Careers in this field ensure the safety and efficiency of air transport and advance space travel and research. This Sub-Cluster also includes managing flight operations and air traffic, designing aerospace systems, and conducting space exploration.

Aviation Technology
Avionics
"Your Place in Space" Department of Education Program

Ground & Rail Transportation: Careers related to the transportation of goods and passengers by road and rail. This field includes the design, operation, and management of automotive, trucking, rail operations, and logistics services, focusing on efficient and safe ground transport. Professionals in the field of rail operations work in a variety of settings from urban transit systems, such as subways and light rail, to cross-country freight and high-speed passenger trains, emphasizing the diverse yet specialized skills required to meet a wide range of transportation needs.

Commercial Driving
Railroad Operations

Maintenance & Repair: Careers encompassing the repair and maintenance of transportation systems, including ground vehicles, rail vehicles, aircraft, and nautical vessels. This field also integrates specialized areas such as auto body and engine repair and is increasingly influenced by advancements in technology, including the maintenance of electric vehicles and systems for autonomous driving. Professionals in this field ensure that all forms of transportation equipment operate safely and efficiently, adapting to new technologies to meet evolving demands.

Auto Body Technology
Automotive Maintenance
Diesel Mechanics
Electric Vehicle Maintenance

Marine Transportation: Careers in the design, operation, and management of maritime vessels and infrastructure for the transportation of goods and passengers, and watercraft used in sports and leisure activities. Professionals in this field engage in managing ship navigation; engineering marine systems; overseeing port operations; and ensuring the safety and maintenance of recreational vessels such as yachts, human-powered craft, and water powersport vehicles.

Marine Transport
Vessel Operations

Planning & Logistics: Careers focused on managing and optimizing the supply chain's flow of goods and information. This Sub-Cluster encompasses roles in transportation planning, supply chain coordination, and efficient material sourcing, all aimed at enhancing efficiency, minimizing waste, ensuring safety, and facilitating timely delivery. This field integrates modern technologies to improve production, drive innovation, and maintain competitiveness in global trade systems. It also includes urban and regional planning for transit, further supporting effective transportation and logistics.

Transportation, Distribution, &
Logistics Systems

Purchasing & Warehousing: Careers centered around procurement, warehousing, and facility maintenance. Professionals in procurement negotiate contracts and purchases as well as manage supplier relationships. Warehousing includes careers that oversee efficient storage, dispatch, and inventory control of goods. Professionals in facility maintenance manage supply chain facilities, ensuring operational efficiency and compliance with safety regulations.

Business Administration
Supply Chain Management