

Public Service & Safety

Emergency Response • Judicial Systems • Local, State, & Federal Services • Military & National Security • Public Safety



Promising Progressive Career Pathways Map

Education
(Skills/
Knowledge)



Work-Based
Learning



Local Career
Opportunities

Middle School

Middle
School Core
+ Electives

High School

KPS High Schools +
Career and Technical Education

CCC – Emergency Med. Tech,
Criminal Justice & Public Safety

Early/Middle College

Criminal Justice, Emergency Medical
Services, Emergency Medical Technology –
Basic

Community College

Skill-Based Credentials

EMT– Basic, Legal Office Asst., Corrections
Officer Academy, Law Enforcement
Training Academy

Associate of Arts and Sciences

Emergency Medical Services, Fire Science,
Law Enforcement & Criminal Justice

University

Bachelor of Arts

Criminal Justice, Political Science,
Public and Nonprofit Administration, Public
Health, Economics,
Humanities – Pre-Law,
International Relations,
Public Policy and Urban Affairs

EDP (K-12)

Dual Enrollment Choices

2+2 Transfer Programs

Job Shadowing, Co-Ops, Internships,
Apprenticeships, Summer Jobs

Internships,
Apprenticeships,
Full- and Part-Time Jobs

Internships,
Apprenticeships,
Full- and Part-Time Jobs

Security Guards	\$35,280
Public Safety Telecommunicators	\$49,950
First-Line Supervisors of Police and Detectives	\$81,370
Court, Municipal, and License Clerks	\$45,400

Paralegals and Legal Assistants	\$50,260
Police and Sheriff's Patrol Officers	\$64,790
Detectives and Criminal Investigators	\$78,620
Eligibility Interviewers, Government Programs	\$62,400

Management Analysts	\$83,250
Compliance Officers	\$64,000
Civil Engineers	\$81,380
Social and Community Service Managers	\$70,450
Human Resources Managers	\$118,770

Design Your Path to Your Promise
— Explore Where You Can Go.

Kalamazoo Public Schools

©2025 P2C and Kalamazoo Public Schools – All rights reserved.



PATHWAY 2 CAREERS



Public Service & Safety

Design Your Path to Your Promise — Here's How You Can Get There.

MIDDLE SCHOOL

English Language Arts	Math	Science	Social Studies	World Language	Enrichment	Career Readiness	Elective Focus
English	6 th Grade Math or Accelerated Math	6 th Grade Science	Social Studies	Spanish for Beginners (Elective)	Physical Ed./Band, Orchestra, or Choir	Life Skills	Tech Smart
English	7 th Grade Math or Accelerated Math	7 th Grade Science	Social Studies	Spanish Intermediate	Physical Ed./Band, Orchestra, or Choir	Life Skills	Tech Smart
English	8 th Grade Math or Algebra	Science/Robotics	Social Studies	Spanish 1	Physical Ed./Band, Orchestra, or Choir	Life Skills	Tech Smart

HIGH SCHOOL

English Language Arts	Math	Science	Social Studies	World Language	Enrichment	Career Readiness	Elective Focus
English 9 / Honors English	Algebra 1 or Geometry	Environ. Science & Biology (CEB)	World History	Spanish	PE	Tech Smart	Band, Orchestra or Choir or other career programs below.
English 10 / Honors English	Geometry or Algebra II	Biology (DEE) and Chemistry	US History	Spanish	Health	College/Career Readiness	
English 11 A or Honors or AP	Algebra II or Statistics	Physics	Gov or AP Gov	Spanish / (future Arabic)	American Military History	Economics	
College Eng. 12 or Honors Eng.	Statistics or Personal Finance	Science Elective	Social Studies Elective	Spanish / (future Arabic)	Fine Arts	Government & Politics	

Grade	Possible Career-Connected Pathway Choices		Dual Enrollment Courses	Postsecondary Programs/Majors/Apprenticeships for Occupations in this Career Cluster	
9	Family, Career, and Community Leaders of Amer.	American Military History	<ul style="list-style-type: none"> Basic Emergency Medical Tech Medical First Responder Human Anatomy & Physiology I Intro to Law Enforcement & Criminal Justice Intro to Corrections Criminal Law & Procedure College Writing I Legal Terminology 	Certificates, Associate's Degrees, and Apprenticeships	Bachelor's and Advanced Degrees
10-12	Law I & II	Economics		<ul style="list-style-type: none"> EMS, AAS EMT Basic, COA Fire Science, AAS Law Enforcement & Criminal Justice, AA Corrections Officer Academy Police Academy Legal Office Asst. Cert. 	<ul style="list-style-type: none"> Criminal Justice Political Science Public and Nonprofit Administration Public Health Economics Humanities – Pre-Law International Relations
11-12	Criminal Justice & Public Safety	Government & Politics			
12	Emergency Medical Technician Program	AP U.S. Government & Politics			

Kalamazoo Public Schools

College and Career Awareness & Exploration Resources

Higher Education



Early/Middle College Programs

Kalamazoo County Early/Middle College (EMC) is an innovative early college program, which gives students the opportunity to earn an associate degree or certificate with an additional year of high school.



Kalamazoo Valley Community College

Kalamazoo Valley Community College seeks to provide every student with clear, flexible program options that provide a mix of educational skills and experiences that will prepare students for advanced coursework at top universities and meaningful opportunities for employment in a changing world.



Kalamazoo College

Kalamazoo College offers qualified high school students the opportunity to enroll in courses while concurrently enrolled in high school during the fall, winter, and spring terms.



Western Michigan University

Dual enrollment through Early College Programs at WMU provides eligible high school students with credits that may be applied toward high school graduation requirements, as well as a college or university program.



The Kalamazoo Promise

Choosing a career path is one of the biggest and most important decisions you'll ever make. The good news is that The Promise is here to help you find and pursue the career path that fits you best.

Local Career Training Programs



Career Launch Kalamazoo

This modernized Youth Apprenticeship Program that provides flexible occupational training programs that cultivate well-educated, highly skilled workers able to meet the demands of a competitive global economy in careers that are in high demand.



Kalamazoo RESA Career Connect Campus

New in the 2025-2026 school year, students will have the opportunity to participate in programs at the Career Connect Campus (CCC). The inaugural class of students at the CCC will learn from industry experts in a new, state-of-the-art facility.



Teach Kalamazoo

Kalamazoo's Grow Your Own (GYO) Teacher Residency program includes apprenticeships and numerous on-ramps into the teaching profession for undergraduate and graduate students, staff, parents, paraprofessionals, for anyone with an existing bachelor's degree, and/or anyone who is interested in entering the honorable and fulfilling profession of teaching.

Labor Market Tools



Michigan Pathfinder

Pathfinder uses current labor market, wage, and institutional data and metrics to help you create an individualized career roadmap. This free tool provides information to students, parents, and guidance staff to make informed choices about educational and career options.



Pure Michigan Talent Connect

Michigan's free online career exploration tool that provides information on in-demand careers and the degrees or credentials needed to pursue them.

College & Career Exploration and Resources



[Xello Career Exploration](#)

Kalamazoo Public Schools uses the Xello platform so students in grades K-12 can build self-knowledge and explore options beyond high school.



[Michigan Career Development Model](#)

The Michigan Career Development Model (MCDM) is a framework, guided by legislation that engages school communities, students, and their support networks in intentional and meaningful career awareness, exploration, and preparation.



[Advance CTE National Career Clusters Framework](#)

The National Career Clusters® Framework provides a shared structure and language for CTE program design across the United States. The new framework provides meaningful career exploration and preparation experiences through Career Technical Education (CTE) that prepare students for the changing and interconnected world of work.



[Michigan Pathfinder](#)

Pathfinder provides valuable information to help students make informed choices about educational and career options.



[O*NET Online](#)

O*Net provides a collection of resources to inform students' college and career journeys: a Career Exploration Tool, O*NET Interest Profiler, My Next Move, Career One Stop, and Get My Future.



[SAT/PSAT – College Board](#)

The SAT and PSAT are standardized tests meant to show colleges and universities how prepared students are for college by measuring key skills like reading comprehension, computational ability, and clarity of expression.



[EBSCO Learning Express](#)

EBSCO LearningExpress provides online platforms for academic skill building, standardized test preparation, and career-oriented digital content. It helps students prepare for college, explore careers, and accelerate their journey into careers.



[Credential Center](#)

Certifications demonstrate for employers that job candidates have specific skills or knowledge in an occupation, industry, or technology. This site helps students explore training associated with certifications and credentials.



[Apprenticeship USA](#)

Discover apprenticeships across industries, how programs are started by employers, and how to become an apprentice.



[ASVAB Career Exploration](#)

The Armed Services Vocational Aptitude Battery (ASVAB) is a multiple-aptitude battery that measures developed abilities and helps predict future academic and occupational success in the military.

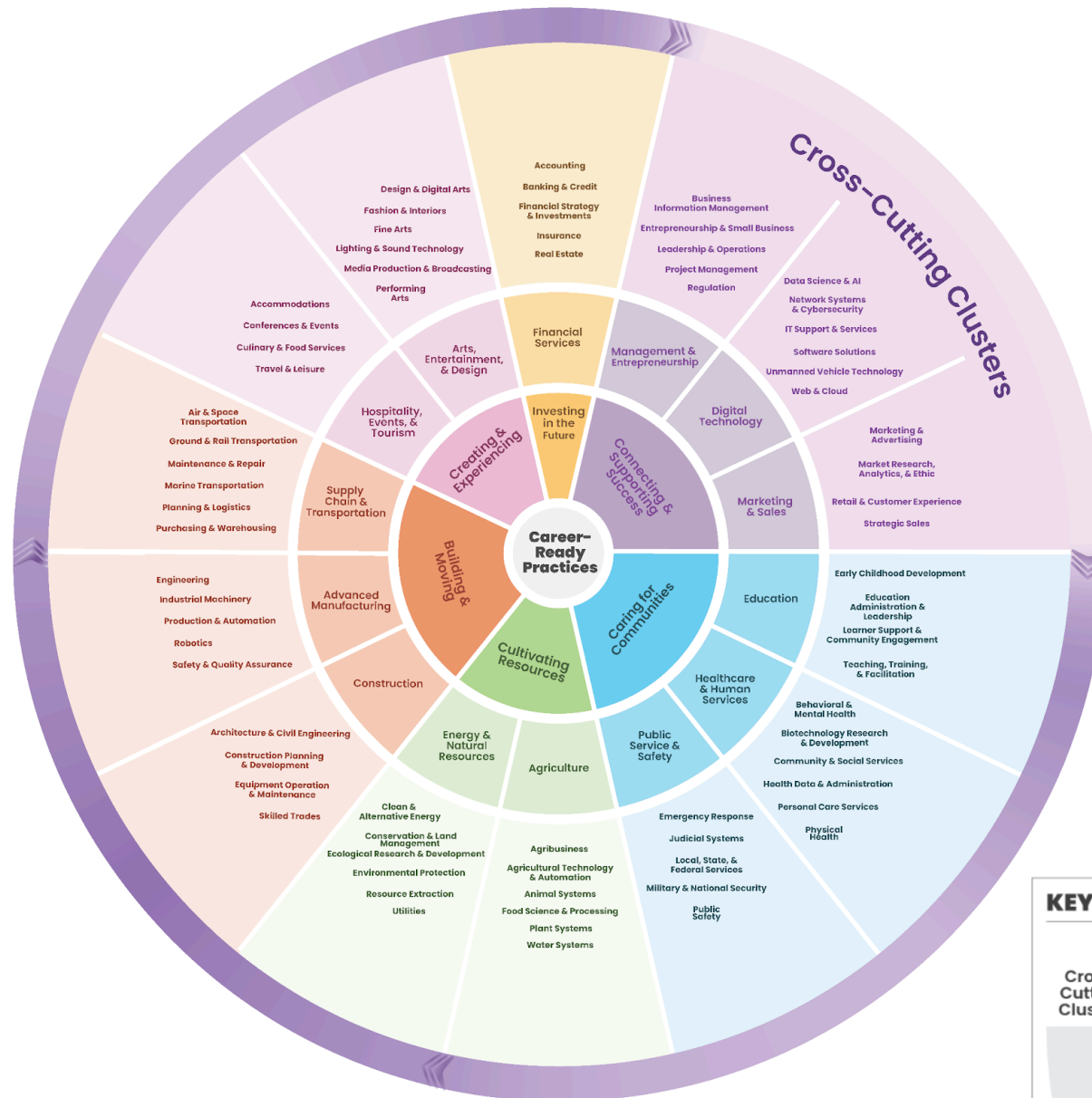


Career Clusters

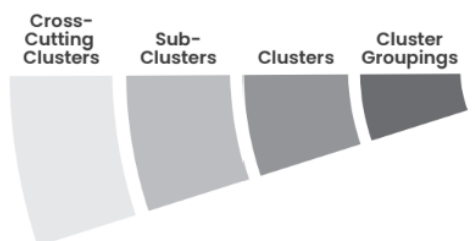
Pathways to College & Career Readiness

The Framework: Wheel View

ADVANCE CTE
State Leaders Connecting Learning to Work



KEY



The Career Clusters logo and its extensions are registered trademarks of Advance CTE. Our use of them does not imply an affiliation with or endorsement by Advance CTE.

Public Service & Safety: *Shaping, Serving, & Protecting Our Communities*

Cluster Definition: The Public Service & Safety Career Cluster encompasses roles in local, state, and federal government; legal and justice systems; security; and military operations, all aimed at promoting civic responsibility and ensuring the well-being, security, functionality, and resilience of communities, states, and countries.

Sub-Clusters

Example Programs of Study

Emergency Response: Careers focused on strategic actions taken to prepare for and manage crises and emergencies, including natural disasters, fires, accidents, and other urgent situations. Careers in this field involve training in rapid assessment, effective communication, and critical decisionmaking to mitigate risks, provide urgent medical services, and coordinate recovery efforts. This Sub-Cluster includes work in various settings, from government agencies to private organizations, that play a crucial role in safeguarding public health and safety.

Emergency & Fire Management Services
Fire Science

Judicial Systems: Careers dedicated to maintaining the legal system, upholding justice, fairness, and the rule of law for both individuals and organizations. This Sub-Cluster encompasses a wide range of professions within the legal framework and court systems, focusing on ensuring that legal processes and justice delivery are carried out effectively and efficiently.

Legal Studies
Paralegal & Legal Assistant Training

Local, State & Federal Services: Careers in government agencies responsible for policy and economic development, ensuring democratic processes, access to public services, governance, public administration, public policy, urban and regional planning, and community development. This field delivers services that support the protection of public goods and community resources such as local parks, libraries, and recreation centers and promote the well-being, stability, and sustainable growth of communities and their residents.

Economics
Public Management & Administration
Regional & Urban Planning

Military & National Security: Careers centered on safeguarding countries through defense operations, strategic planning, intelligence gathering, and technological resilience. Professionals in this field prevent threats and ensure citizens' safety while serving in the military, government, or private sector, playing a crucial role in maintaining national stability and preparedness.

National Security

Public Safety: Careers in law enforcement, corrections, and both public and private security. This Sub-Cluster focuses on safeguarding communities, managing correctional and rehabilitation facilities, and providing comprehensive protective services. Professionals in this field work to prevent crime, inform and educate citizens, and ensure public order, contributing to the overall safety and well-being of society.

Criminal Justice
Law Enforcement Services
Security & Protective Services