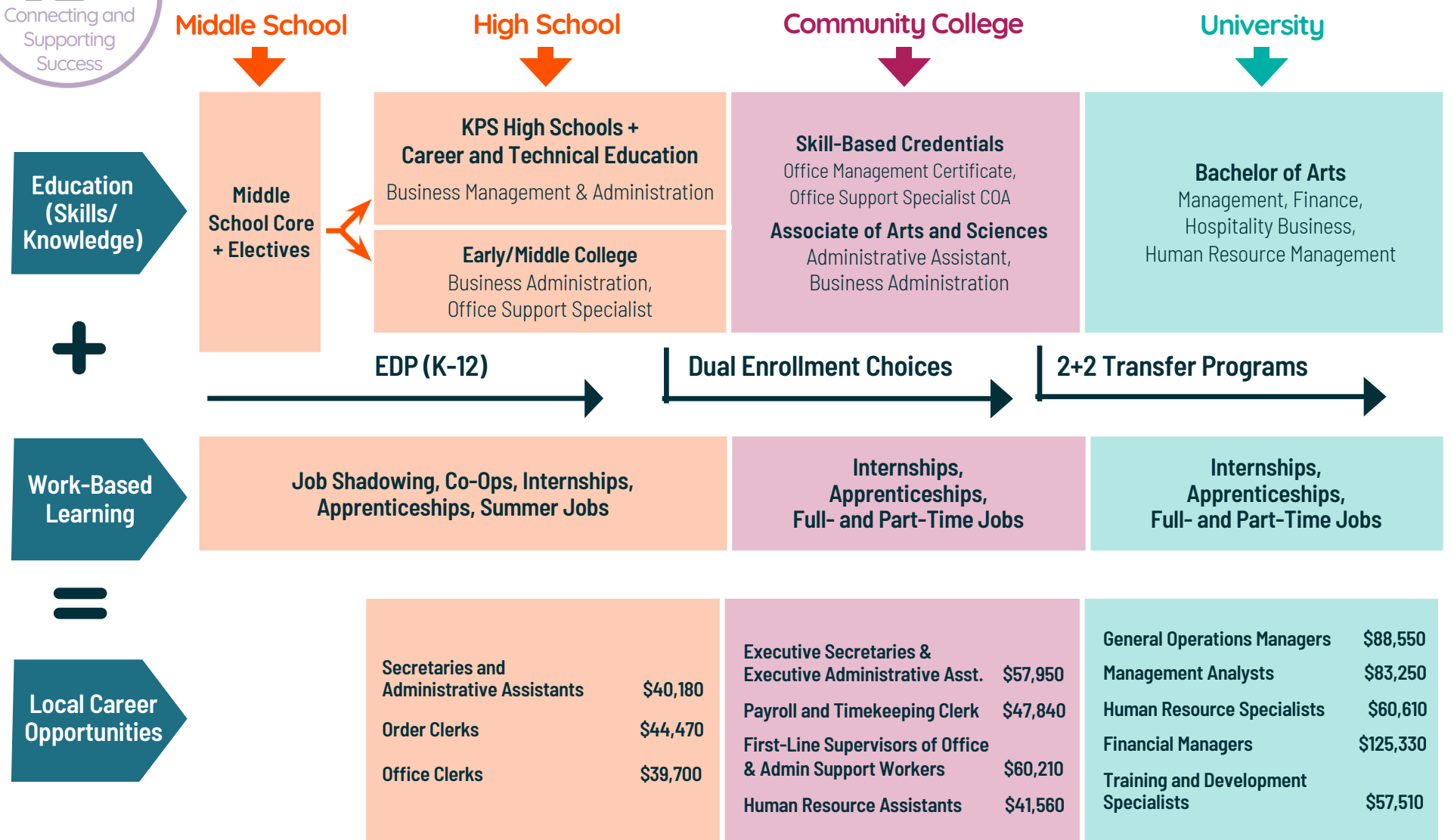


# Management & Entrepreneurship

Business Information Mgmt • Entrepreneurship & Small Business • Leadership & Operations • Regulation

Promising Progressive Career Pathways Map



**Design Your Path to Your Promise**  
— Explore Where You Can Go.

Kalamazoo Public Schools

©2025 P2C and Kalamazoo Public Schools — All rights reserved.

**p2c**  
PATHWAY 2 CAREERS



# Management & Entrepreneurship

Design Your Path to Your Promise — Here's How You Can Get There.

MIDDLE SCHOOL

| English Language Arts | Math   | Science                       | Social Studies | World Language        | Enrichment                             | Career Readiness | Elective Focus |
|-----------------------|--|-------------------------------|----------------|-----------------------|--|------------------|----------------|
| English               | 6 <sup>th</sup> Grade Math or Accelerated Math | 6 <sup>th</sup> Grade Science | Social Studies | Spanish / Mandarin    | Physical Ed./Band, Orchestra, or Choir | Life Skills      | Tech Smart     |
| English               | 7 <sup>th</sup> Grade Math or Accelerated Math | 7 <sup>th</sup> Grade Science | Social Studies | Spanish for Beginners | Physical Ed./Band, Orchestra, or Choir | Life Skills      | Tech Smart     |
| English               | 8 <sup>th</sup> Grade Math or Algebra          | Science/Robotics              | Social Studies | Spanish 1             | Physical Ed./Band, Orchestra, or Choir | Life Skills      | Tech Smart     |

HIGH SCHOOL

| English Language Arts          | Math                           | Science                          | Social Studies          | World Language     | Enrichment                 | Career Readiness         | Elective Focus  |
|--------------------------------|--------------------------------|----------------------------------|-------------------------|--------------------|----------------------------|--------------------------|---|
| English 9 / Honors English     | Algebra 1                      | Environ. Science & Biology (DEE) | World History           | Spanish / Mandarin | PE                         | Tech Smart               | Band, Orchestra, or Choir or other career programs below. |
| English 10 / Honors English    | Geometry or Algebra II         | Biology (CEB) & Chemistry        | US History              | Spanish / Mandarin | Health                     | College/Career Readiness |   |
| English 11 A or Honors or AP   | Algebra II & Stats or AP Stats | Physics                          | Gov or AP Gov           | Spanish / Mandarin | AP Art Studio              | Economics                |   |
| College Eng. 12 or Honors Eng. | Business Finance and Marketing | Science Elective                 | Social Studies Elective | Spanish / Mandarin | Fine Arts or AP Art Studio | Business Academy         |   |

| Grade | Possible Career-Connected Pathway Choices          |                                     | Dual Enrollment Courses   | Postsecondary Programs/Majors/Apprenticeships for Occupations in this Career Cluster   |   |
|-------|--|-------------------------------------|---|--|---|
| 9     | Young Entrepreneurs of the Future                  |                                     | <ul style="list-style-type: none"> <li>Personal Financial Literacy</li> <li>Marketing, Entrepreneurship, and Career Planning</li> <li>Business Law</li> <li>International Business</li> <li>Business Principles/Practices</li> <li>Principles of Economics</li> </ul> | <b>Certificates and Associate's Degrees</b> <ul style="list-style-type: none"> <li>Business Administration, AA &amp; AAS</li> <li>Supervisory Leadership Certificate</li> <li>Office Support Specialist Certificate</li> </ul> | <b>Bachelor's and Advanced Degrees</b> <ul style="list-style-type: none"> <li>Business Administration</li> <li>Entrepreneurship &amp; Small Business</li> <li>International Business/Trade/Commerce</li> <li>Human Resource Management</li> </ul> |
| 10-12 | Marketing, Entrepreneur. & Career Planning         | Business Information Systems A & B  |   |  |   |
| 10-12 | Business Academy                                   | Link Crew Leadership                |   |  |   |
| 12    | Business Career and Prof. Dev. Capstone Experience | Sports and Entertainment Management |   |  |   |

# Kalamazoo Public Schools

## College and Career Awareness & Exploration Resources

### Higher Education



#### Early/Middle College Programs

Kalamazoo County Early/Middle College (EMC) is an innovative early college program, which gives students the opportunity to earn an associate degree or certificate with an additional year of high school.



#### Kalamazoo Valley Community College

Kalamazoo Valley Community College seeks to provide every student with clear, flexible program options that provide a mix of educational skills and experiences that will prepare students for advanced coursework at top universities and meaningful opportunities for employment in a changing world.



#### Kalamazoo College

Kalamazoo College offers qualified high school students the opportunity to enroll in courses while concurrently enrolled in high school during the fall, winter, and spring terms.



#### Western Michigan University

Dual enrollment through Early College Programs at WMU provides eligible high school students with credits that may be applied toward high school graduation requirements, as well as a college or university program.



#### The Kalamazoo Promise

Choosing a career path is one of the biggest and most important decisions you'll ever make. The good news is that The Promise is here to help you find and pursue the career path that fits you best.

### Local Career Training Programs



#### Career Launch Kalamazoo

This modernized Youth Apprenticeship Program that provides flexible occupational training programs that cultivate well-educated, highly skilled workers able to meet the demands of a competitive global economy in careers that are in high demand.



#### Kalamazoo RESA Career Connect Campus

New in the 2025-2026 school year, students will have the opportunity to participate in programs at the Career Connect Campus (CCC). The inaugural class of students at the CCC will learn from industry experts in a new, state-of-the-art facility.



#### Teach Kalamazoo

Kalamazoo's Grow Your Own (GYO) Teacher Residency program includes apprenticeships and numerous on-ramps into the teaching profession for undergraduate and graduate students, staff, parents, paraprofessionals, for anyone with an existing bachelor's degree, and/or anyone who is interested in entering the honorable and fulfilling profession of teaching.

### Labor Market Tools



#### Michigan Pathfinder

Pathfinder uses current labor market, wage, and institutional data and metrics to help you create an individualized career roadmap. This free tool provides information to students, parents, and guidance staff to make informed choices about educational and career options.



#### Pure Michigan Talent Connect

Michigan's free online career exploration tool that provides information on in-demand careers and the degrees or credentials needed to pursue them.

## College & Career Exploration and Resources



### [Xello Career Exploration](#)

Kalamazoo Public Schools uses the Xello platform so students in grades K-12 can build self-knowledge and explore options beyond high school.



### [Michigan Career Development Model](#)

The Michigan Career Development Model (MCDM) is a framework, guided by legislation that engages school communities, students, and their support networks in intentional and meaningful career awareness, exploration, and preparation.



### [Advance CTE National Career Clusters Framework](#)

The National Career Clusters® Framework provides a shared structure and language for CTE program design across the United States. The new framework provides meaningful career exploration and preparation experiences through Career Technical Education (CTE) that prepare students for the changing and interconnected world of work.



### [Michigan Pathfinder](#)

Pathfinder provides valuable information to help students make informed choices about educational and career options.



### [O\\*NET Online](#)

O\*Net provides a collection of resources to inform students' college and career journeys: a Career Exploration Tool, O\*NET Interest Profiler, My Next Move, Career One Stop, and Get My Future.



### [SAT/PSAT – College Board](#)

The SAT and PSAT are standardized tests meant to show colleges and universities how prepared students are for college by measuring key skills like reading comprehension, computational ability, and clarity of expression.



### [EBSCO Learning Express](#)

EBSCO LearningExpress provides online platforms for academic skill building, standardized test preparation, and career-oriented digital content. It helps students prepare for college, explore careers, and accelerate their journey into careers.



### [Credential Center](#)

Certifications demonstrate for employers that job candidates have specific skills or knowledge in an occupation, industry, or technology. This site helps students explore training associated with certifications and credentials.



### [Apprenticeship USA](#)

Discover apprenticeships across industries, how programs are started by employers, and how to become an apprentice.



### [ASVAB Career Exploration](#)

The Armed Services Vocational Aptitude Battery (ASVAB) is a multiple-aptitude battery that measures developed abilities and helps predict future academic and occupational success in the military.

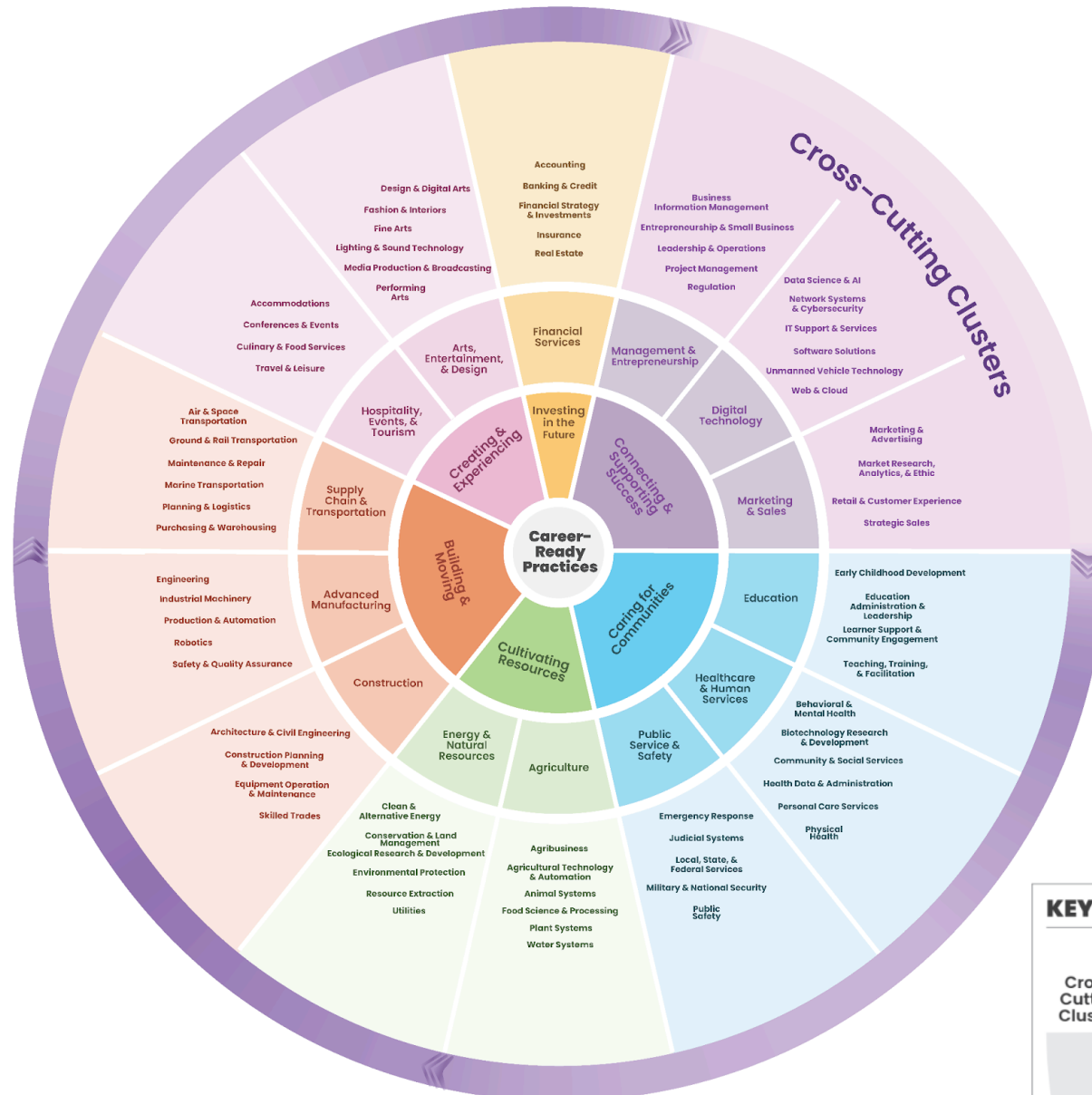


# Career Clusters

Pathways to College & Career Readiness

## The Framework: Wheel View

**ADVANCE** CTE  
State Leaders Connecting Learning to Work



### KEY



The Career Clusters logo and its extensions are registered trademarks of Advance CTE. Our use of them does not imply an affiliation with or endorsement by Advance CTE.

## Cross-Cutting Cluster | Management & Entrepreneurship: Driving Business Success Across All Industries

**Cluster Definition:** The Management & Entrepreneurship Career Cluster involves skills and occupations that are essential across all industries, focusing on business administration, operations optimization, strategic planning, workforce management, and entrepreneurship. It merges key areas such as data management and analysis, human resources, general operations, administrative support, project management, and organizational leadership. This Cluster ensures that businesses across all industries efficiently meet their goals, adapt to market changes, and maintain competitive advantage. By emphasizing entrepreneurship, this Cluster supports the creation of new ventures, driving economic growth and innovation and making it a cornerstone of modern economies.

### Sub-Clusters

### Example Programs of Study

**Business Information Management:** Careers centered around using technology to collect information that supports and enhances business operations. Professionals in this field gather, analyze, and interpret data to distill and recognize patterns, informing decisionmaking and optimizing performance. By integrating advanced technologies, professionals in this field streamline processes, improve operational efficiency, support strategic planning, and drive business growth in an increasingly global and information-centric environment.

Business Technology Applications

**Entrepreneurship & Small Business:** Careers focused on initiating and managing businesses, including startups, small businesses, gig economy work, and social enterprises. This field includes identifying opportunities, developing strategies, and securing financing, all with an emphasis on fostering innovation. Entrepreneurship and small businesses significantly affect all industry sectors by supporting employment and fostering innovation.

Entrepreneurship

**Leadership & Operations:** Careers involving the leadership of business activities, including strategic planning; resource forecasting and allocation; engaging with boards, shareholders, and other constituents; administrative support; and management consulting. This field also involves human resources management, recruitment, and employee development, fostering a positive work environment while optimizing processes and leading growth initiatives.

Business Essentials  
Business Management  
Human Resources  
Management

**Project Management:** Careers focused on planning, leading, initiating, executing, controlling, and closing out projects to achieve specific goals within a set timeline and budget. This field is essential in all industries as it ensures that projects are completed efficiently and effectively, aligning resources and efforts with strategic business objectives.

Principles of Management

**Regulation:** Careers dedicated to corporate responsibility, ensuring that all industries adhere to health, safety, financial, and environmental regulations. Professionals in this field develop and enforce policies, conduct inspections and audits, and implement measures to protect worker safety, public health, and the environment. This Sub-Cluster plays a crucial role in maintaining compliance and accountability across various sectors.

Business Law