

Hospitality, Events, & Tourism

Accommodation • Conference & Events • Culinary & Food Services • Travel & Leisure



Creating and
Experiencing

Middle School

High School

Community College

University

Education
(Skills/
Knowledge)

Middle
School Core
+ Electives

KPS High Schools +
Career and Technical Education

CCC – Culinary Arts

Early/Middle College

Culinary Arts & Sustainable
Food Systems, Dietary Manager

Skill-Based Credentials

Baking & Pastries, Culinary
Arts & Sustainable Food
Systems, Dietary Manager,
Sustainable Brewing

Assoc. Arts and Sciences

Culinary Arts & Sustain. Food
Systems, Sustain. Brewing

Bachelor of Arts

Nutrition & Dietetics, Event
Management, Recreation Management,
Sports Management, Sustainable
Brewing, Food Marketing, Tourism &
Travel

EDP (K-12)

Dual Enrollment Choices

2+2 Transfer Programs

Work-Based
Learning

Job Shadowing, Co-Ops, Internships,
Apprenticeships, Summer Jobs

Internships,
Apprenticeships,
Full- and Part-Time Jobs

Internships,
Apprenticeships,
Full- and Part-Time Jobs

Local Career
Opportunities

First-Line Supervisors of Food Prep. and Serving Workers	\$36,510
Food Service Managers	\$57,420
Waiters and Waitresses	\$33,860
Cooks	\$34,260
Bartenders	\$29,660

Travel Agents	\$45,160
Chefs and Head Cooks	\$49,800
Tour and Travel Guides	\$25,780
Travel Agents	\$45,160
Janitors and Cleaners, Except Maids and Housekeeping Cleaners	\$33,840

Recreation Workers	\$31,200
Lodging Managers	\$64,860
Meeting, Convention, and Event Planners	\$48,620
Fundraising Managers	\$97,190
Fundraisers	\$57,980

Design Your Path to Your Promise
— Explore Where You Can Go.

Kalamazoo Public Schools



Hospitality, Events, & Tourism

Design Your Path to Your Promise — Here's How You Can Get There.

MIDDLE SCHOOL

English Language Arts	Math	Science	Social Studies	World Language	Enrichment	Career Readiness	Elective Focus
English	6 th Grade Math or Accelerated Math	6 th Grade Science	Social Studies	Spanish for Beginners (Elective)	Physical Ed./Band, Orchestra, or Choir	Life Skills	Tech Smart
English	7 th Grade Math or Accelerated Math	7 th Grade Science	Social Studies	Spanish Intermediate	Physical Ed./Band, Orchestra, or Choir	Life Skills	Tech Smart
English	8 th Grade Math or Algebra	Science/Robotics	Social Studies	Spanish 1	Physical Ed./Band, Orchestra, or Choir	Life Skills	Tech Smart

HIGH SCHOOL

English Language Arts	Math	Science	Social Studies	World Language	Enrichment	Career Readiness	Elective Focus
English 9 / Honors English	Algebra 1 or Geometry	Environ. Science & Biology (CEB)	World History	French / Spanish	PE	Tech Smart	Band, Orchestra, or Choir and other career programs below.
English 10 / Honors English	Geometry or Algebra II	Biology (DEE) & Chemistry	US History	French / Spanish	Health	College/Career Readiness	
English 11 A or Honors or AP	Algebra II or Personal Finance	Physics	Gov or AP Gov	French / Spanish	Food and Nutrition	Economics	
College Eng. 12 or Honors Eng.	Personal and Business Finance	Science Elective	Social Studies Elective	French / Spanish	Fine Arts	Business Finance	

Grade	Possible Career-Connected Pathway Choices		Dual Enrollment Courses	Postsecondary Programs/Majors/Apprenticeships for Occupations in this Career Cluster	
9	Young Entrepreneurs of the Future		<ul style="list-style-type: none"> Intro Sustainable Food Systems Food Safety Essentials Introduction to Food Service Culinary and Food Industry Math The Science of Food Nutritional Cooking Introduction to Brewing 	Certificates, Associate's Degrees, and Apprenticeships <ul style="list-style-type: none"> Baking & Pastries Cert. Culinary Arts & Sustainable Food Systems, AAS or Cert. Dietary Manager, COA Sustainable Brewing Cert. 	Bachelor's and Advanced Degrees <ul style="list-style-type: none"> Nutrition & Dietetics Event Management Recreation Management Sports Management Sustainable Brewing Food Marketing Tourism & Travel
10-12	Food and Nutrition	Marketing, Entrepreneurship, and Career Plan			
11-12	Culinary Arts	Health Science			
11-12	Business Finance	Sports & Entertainment Marketing			

Kalamazoo Public Schools

College and Career Awareness & Exploration Resources

Higher Education



Early/Middle College Programs

Kalamazoo County Early/Middle College (EMC) is an innovative early college program, which gives students the opportunity to earn an associate degree or certificate with an additional year of high school.



Kalamazoo Valley Community College

Kalamazoo Valley Community College seeks to provide every student with clear, flexible program options that provide a mix of educational skills and experiences that will prepare students for advanced coursework at top universities and meaningful opportunities for employment in a changing world.



Kalamazoo College

Kalamazoo College offers qualified high school students the opportunity to enroll in courses while concurrently enrolled in high school during the fall, winter, and spring terms.



Western Michigan University

Dual enrollment through Early College Programs at WMU provides eligible high school students with credits that may be applied toward high school graduation requirements, as well as a college or university program.



The Kalamazoo Promise

Choosing a career path is one of the biggest and most important decisions you'll ever make. The good news is that The Promise is here to help you find and pursue the career path that fits you best.

Local Career Training Programs



Career Launch Kalamazoo

This modernized Youth Apprenticeship Program that provides flexible occupational training programs that cultivate well-educated, highly skilled workers able to meet the demands of a competitive global economy in careers that are in high demand.



Kalamazoo RESA Career Connect Campus

New in the 2025-2026 school year, students will have the opportunity to participate in programs at the Career Connect Campus (CCC). The inaugural class of students at the CCC will learn from industry experts in a new, state-of-the-art facility.



Teach Kalamazoo

Kalamazoo's Grow Your Own (GYO) Teacher Residency program includes apprenticeships and numerous on-ramps into the teaching profession for undergraduate and graduate students, staff, parents, paraprofessionals, for anyone with an existing bachelor's degree, and/or anyone who is interested in entering the honorable and fulfilling profession of teaching.

Labor Market Tools



Michigan Pathfinder

Pathfinder uses current labor market, wage, and institutional data and metrics to help you create an individualized career roadmap. This free tool provides information to students, parents, and guidance staff to make informed choices about educational and career options.



Pure Michigan Talent Connect

Michigan's free online career exploration tool that provides information on in-demand careers and the degrees or credentials needed to pursue them.

College & Career Exploration and Resources



[Xello Career Exploration](#)

Kalamazoo Public Schools uses the Xello platform so students in grades K-12 can build self-knowledge and explore options beyond high school.



[Michigan Career Development Model](#)

The Michigan Career Development Model (MCDM) is a framework, guided by legislation that engages school communities, students, and their support networks in intentional and meaningful career awareness, exploration, and preparation.



[Advance CTE National Career Clusters Framework](#)

The National Career Clusters® Framework provides a shared structure and language for CTE program design across the United States. The new framework provides meaningful career exploration and preparation experiences through Career Technical Education (CTE) that prepare students for the changing and interconnected world of work.



[Michigan Pathfinder](#)

Pathfinder provides valuable information to help students make informed choices about educational and career options.



[O*NET Online](#)

O*Net provides a collection of resources to inform students' college and career journeys: a Career Exploration Tool, O*NET Interest Profiler, My Next Move, Career One Stop, and Get My Future.



[SAT/PSAT – College Board](#)

The SAT and PSAT are standardized tests meant to show colleges and universities how prepared students are for college by measuring key skills like reading comprehension, computational ability, and clarity of expression.



[EBSCO Learning Express](#)

EBSCO LearningExpress provides online platforms for academic skill building, standardized test preparation, and career-oriented digital content. It helps students prepare for college, explore careers, and accelerate their journey into careers.



[Credential Center](#)

Certifications demonstrate for employers that job candidates have specific skills or knowledge in an occupation, industry, or technology. This site helps students explore training associated with certifications and credentials.



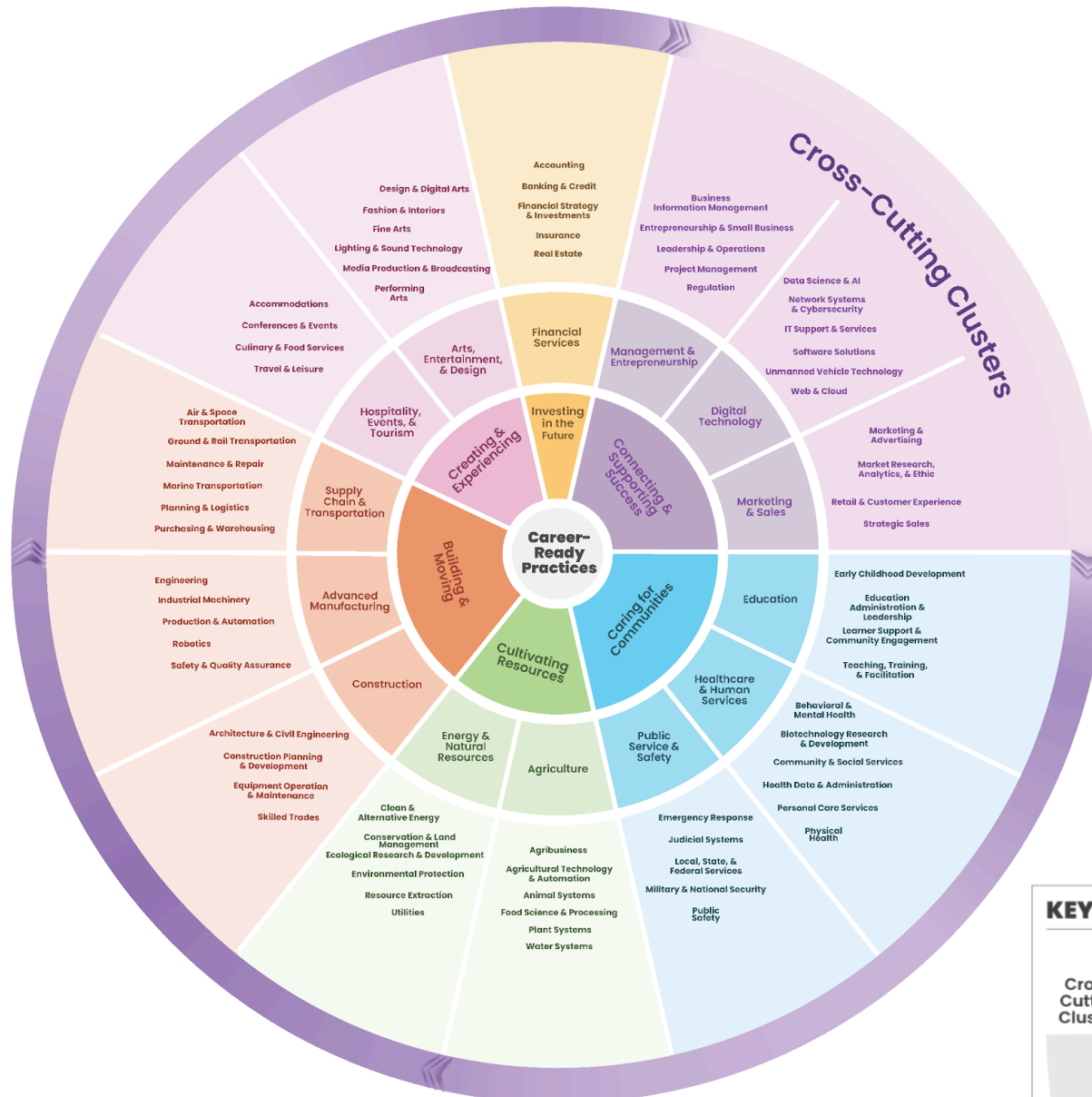
[Apprenticeship USA](#)

Discover apprenticeships across industries, how programs are started by employers, and how to become an apprentice.



[ASVAB Career Exploration](#)

The Armed Services Vocational Aptitude Battery (ASVAB) is a multiple-aptitude battery that measures developed abilities and helps predict future academic and occupational success in the military.



KEY



Hospitality, Events & Tourism: *Unlocking Adventures & Elevating Experiences*

Cluster Definition: The Hospitality, Events, & Tourism Career Cluster encompasses a broad range of services and experiences related to food and beverage, lodging, travel, events, and conferences. This Cluster focuses on delivering quality customer service, memorable experiences, and seamless logistics to cater to the needs and preferences of guests, tourists, and event participants. The Cluster is characterized by its diversity, including everything from luxury hotels and international travel to local dining, cultural events, and business conferences, aiming to enhance the overall experience of visitors and attendees.

Sub-Clusters

Example Programs of Study

Accommodations: Careers that support, operate, and manage businesses and services related to temporary lodging, including hotels, motels, resorts, short-term rentals, and bed-and-breakfast establishments, focusing on providing guests with a comfortable and safe stay. Through advanced technology, hotel and resort management leverages sophisticated property management systems, online booking platforms, mobile-friendly services, and personalized guest experiences.

Hospitality Management
Hotel & Resort Management

Conferences & Events: Careers encompassing the planning, coordination, and execution of various events and conferences. This Sub-Cluster involves organizing conventions; trade shows; and corporate, political, and personal events generating positive economic impact to communities. This field includes logistics, venue management, vendor coordination, budgeting, attendee management, marketing, and risk management. Professionals in this field require strong organizational, creative, and interpersonal skills to ensure the success of events and provide a positive experience for participants.

Conference Planning
Event Management

Culinary & Food Services: Careers dedicated to the service, operation, and management of establishments involved in the preparation and serving of food and drinks with significant emphasis on providing exceptional culinary experiences and delivering high-quality customer service. These establishments vary widely, encompassing independently owned restaurants, nationwide restaurant chains, noncommercial dining facilities, bakeries, and catering services. Professionals in this Sub-Cluster span all aspects and levels of food preparation, including beverage specializations, as well as restaurant management, operations support, and health and safety.

Culinary Services
Nutrition
Pastry Arts
Restaurant Management

Travel & Leisure: Careers focused on facilitating enjoyable travel, entertainment, and recreational activities. This Sub-Cluster includes travel services provided by agencies, ecotourism, agritourism, and cultural tourism, as well as entertainment at attractions including theme parks and museums. This field also involves the organization of sports events, maintenance of outdoor recreation venues and field management, and ethical management of gaming and betting operations.

Outdoor Recreation
Tourism Management