

Health Care & Human Services

Behavioral & Mental Health • Biotechnology Research & Development • Community & Social Services •
Health Data & Administration • Personal Care Services • Physical Health



**Education
(Skills/
Knowledge)**



**Work-Based
Learning**



**Local Career
Opportunities**

Middle School

**Middle
School Core
+ Electives**

High School

**KPS High Schools +
Career and Technical Education**
CCC – Dental Assisting, Medical Lab. Sciences,
Patient Care Tech., Pharmacy Tech., Rehab.
Therapy, Barbering, Cosmetology

Early/Middle College
Social Work, Biological Sciences

Community College

Skill-Based Credentials
Med. Asst. Tech., Medical
Admin. Asst., Patient Care
Academy, Phlebotomy
Academy, Practical Nursing
Associate of Arts and Sciences
Bio. Sciences, Dental Hygiene, Exercise
Science, Health Sci. Gen. Studies,
Nursing, Occupational Therapy,
Physicians Asst., Psychology, Sociology

University

Bachelor of Arts
Nursing, Nutrition and Dietetics,
Occupational Therapy Asst., Pre-Dentistry,
Pre-Medicine, Social Work,
Social Psychology, Psychology,
Biochemistry, Biomedical Sciences,
Health Administration, Biochemistry,
Neuroscience

EDP (K-12)

Dual Enrollment Choices

2+2 Transfer Programs

**Job Shadowing, Co-Ops, Internships,
Apprenticeships, Summer Jobs**

**Internships,
Apprenticeships,
Full- and Part-Time Jobs**

**Internships,
Apprenticeships,
Full- and Part-Time Jobs**

Home Health and Personal Care Aides	\$30,050
Medical Secretaries and Administrative Assistants	\$38,220
Cooks, Institution and Cafeteria	\$33,650
Food Servers, Non-restaurant	\$32,050

Licensed Practical and Licensed Vocational Nurses	\$58,700
Dental Hygienists	\$77,720
Massage Therapists	\$64,340
Physical Therapist Assistants	\$59,800

Registered Nurses	\$81,040
Social and Community Service Managers	\$70,450
Environmental Scientists and Specialists, Including Health	\$79,540
Medical and Health Services Managers	\$99,190

Design Your Path to Your Promise
— Explore Where You Can Go.

Kalamazoo Public Schools



Health Care & Human Services

Design Your Path to Your Promise — Here's How You Can Get There.

MIDDLE SCHOOL

English Language Arts	Math	Science	Social Studies	World Language	Enrichment	Career Readiness	Elective Focus
English	6 th Grade Math or Accelerated Math	6 th Grade Science	Social Studies	Spanish for Beginners (Elective)	Physical Ed./Band, Orchestra, or Choir	Life Skills	Tech Smart
English	7 th Grade Math or Accelerated Math	7 th Grade Science	Social Studies	Spanish Intermediate	Physical Ed./Band, Orchestra, or Choir	Life Skills	Tech Smart
English	8 th Grade Math or Algebra	Science/Robotics	Social Studies	Spanish 1	Physical Ed./Band, Orchestra, or Choir	Life Skills	Tech Smart

HIGH SCHOOL

English Language Arts	Math	Science	Social Studies	World Language	Enrichment	Career Readiness	Elective Focus
English 9 / Honors English	Algebra 1 or Geometry	Environ. Science & Biology (CEB)	World History	Spanish / French	PE	Tech Smart	Band, Orchestra, or Choir and other career programs below.
English 10 / Honors English	Geometry or Algebra II	Biology (DEE) and Chemistry	US History	Spanish / French	Health	College/Career Readiness	
English 11 A or Honors or AP	Algebra II or Statistics	Chemistry or Physics	Gov or AP Gov	Spanish / French / (future Arabic)	Illustration	Economics	
College Eng. 12 or Honors Eng.	Math Modelling and Statistics	AP Biology or AP Chemistry	Social Studies Elective	Spanish / French / (future Arabic)	Fine Arts	Fundamentals of Health Science	

Grade	Possible Career-Connected Pathway Choices		Dual Enrollment Courses	Postsecondary Programs/Majors/Apprenticeships for Occupations in this Career Cluster	
9	Drawing	Anatomy and Physiology A&B	<ul style="list-style-type: none"> Human Anatomy & Physiology I Micro & Infectious Disease Interpersonal Comm. College Writing I Medical Admin Procedures Fundamentals of Biology Introduction to Social Work 	Certificates, Associate's Degrees, and Apprenticeships	Bachelor's and Advanced Degrees
10-12	Fundamentals of Health Science	Medical Laboratory Sciences		<ul style="list-style-type: none"> Medical Admin. Asst. Cert. Practical Nursing Cert. Medical Assistant Technology, AAS or Cert. Social Work, AA Respiratory Care Pract., AAS Physicians Assistant, AS Physical Therapy, AS 	<ul style="list-style-type: none"> Nursing Nutrition and Dietetics Occupational Therapy Asst. Pre-Dentistry Pre-Medicine Social Work Social Psychology Psychology
11-12	Dental Assistant	Cosmetology/Barbering			
12	Certified Nurse Assistant	Health Science			

Kalamazoo Public Schools

College and Career Awareness & Exploration Resources

Higher Education



Early/Middle College Programs

Kalamazoo County Early/Middle College (EMC) is an innovative early college program, which gives students the opportunity to earn an associate degree or certificate with an additional year of high school.



Kalamazoo Valley Community College

Kalamazoo Valley Community College seeks to provide every student with clear, flexible program options that provide a mix of educational skills and experiences that will prepare students for advanced coursework at top universities and meaningful opportunities for employment in a changing world.



Kalamazoo College

Kalamazoo College offers qualified high school students the opportunity to enroll in courses while concurrently enrolled in high school during the fall, winter, and spring terms.



Western Michigan University

Dual enrollment through Early College Programs at WMU provides eligible high school students with credits that may be applied toward high school graduation requirements, as well as a college or university program.



The Kalamazoo Promise

Choosing a career path is one of the biggest and most important decisions you'll ever make. The good news is that The Promise is here to help you find and pursue the career path that fits you best.

Local Career Training Programs



Career Launch Kalamazoo

This modernized Youth Apprenticeship Program that provides flexible occupational training programs that cultivate well-educated, highly skilled workers able to meet the demands of a competitive global economy in careers that are in high demand.



Kalamazoo RESA Career Connect Campus

New in the 2025-2026 school year, students will have the opportunity to participate in programs at the Career Connect Campus (CCC). The inaugural class of students at the CCC will learn from industry experts in a new, state-of-the-art facility.



Teach Kalamazoo

Kalamazoo's Grow Your Own (GYO) Teacher Residency program includes apprenticeships and numerous on-ramps into the teaching profession for undergraduate and graduate students, staff, parents, paraprofessionals, for anyone with an existing bachelor's degree, and/or anyone who is interested in entering the honorable and fulfilling profession of teaching.

Labor Market Tools



Michigan Pathfinder

Pathfinder uses current labor market, wage, and institutional data and metrics to help you create an individualized career roadmap. This free tool provides information to students, parents, and guidance staff to make informed choices about educational and career options.



Pure Michigan Talent Connect

Michigan's free online career exploration tool that provides information on in-demand careers and the degrees or credentials needed to pursue them.

College & Career Exploration and Resources



[Xello Career Exploration](#)

Kalamazoo Public Schools uses the Xello platform so students in grades K-12 can build self-knowledge and explore options beyond high school.



[Michigan Career Development Model](#)

The Michigan Career Development Model (MCDM) is a framework, guided by legislation that engages school communities, students, and their support networks in intentional and meaningful career awareness, exploration, and preparation.



[Advance CTE National Career Clusters Framework](#)

The National Career Clusters® Framework provides a shared structure and language for CTE program design across the United States. The new framework provides meaningful career exploration and preparation experiences through Career Technical Education (CTE) that prepare students for the changing and interconnected world of work.



[Michigan Pathfinder](#)

Pathfinder provides valuable information to help students make informed choices about educational and career options.



[O*NET Online](#)

O*Net provides a collection of resources to inform students' college and career journeys: a Career Exploration Tool, O*NET Interest Profiler, My Next Move, Career One Stop, and Get My Future.



[SAT/PSAT – College Board](#)

The SAT and PSAT are standardized tests meant to show colleges and universities how prepared students are for college by measuring key skills like reading comprehension, computational ability, and clarity of expression.



[EBSCO Learning Express](#)

EBSCO LearningExpress provides online platforms for academic skill building, standardized test preparation, and career-oriented digital content. It helps students prepare for college, explore careers, and accelerate their journey into careers.



[Credential Center](#)

Certifications demonstrate for employers that job candidates have specific skills or knowledge in an occupation, industry, or technology. This site helps students explore training associated with certifications and credentials.



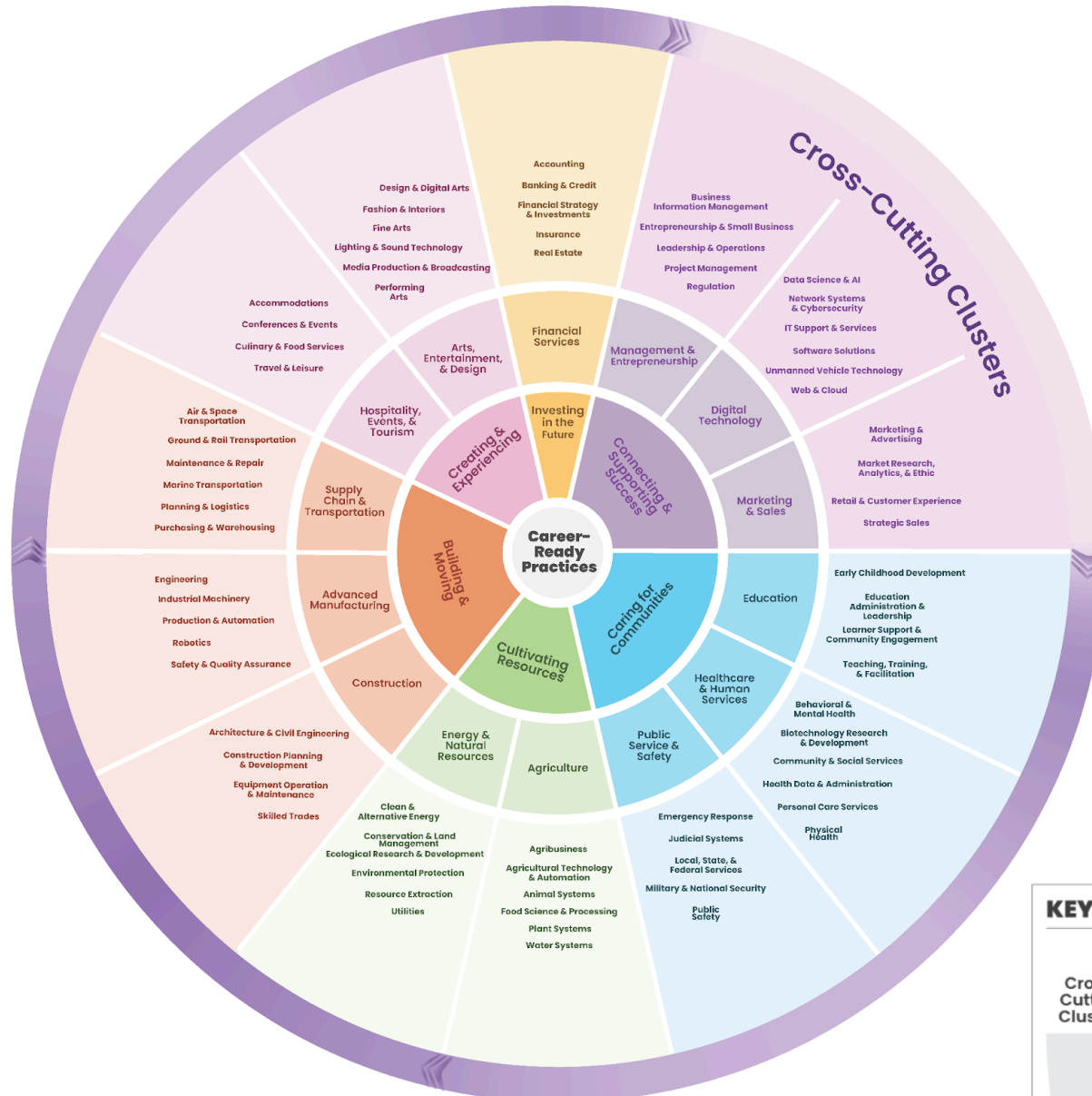
[Apprenticeship USA](#)

Discover apprenticeships across industries, how programs are started by employers, and how to become an apprentice.

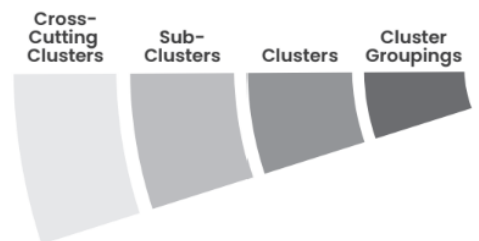


[ASVAB Career Exploration](#)

The Armed Services Vocational Aptitude Battery (ASVAB) is a multiple-aptitude battery that measures developed abilities and helps predict future academic and occupational success in the military.



KEY



Healthcare & Human Services: Supporting the Whole Health of Individuals, Families, & Communities

Cluster Definition: The Healthcare & Human Services Career Cluster promotes whole health in individuals and communities through a diverse array of services. This sector includes technical, mental, and therapeutic services and personal care, supported by medical and social sciences. By addressing social determinants of health and leveraging health data and science, this Cluster aims to enhance the overall health and resilience of individuals, families, and communities.

Sub-Clusters

Example Programs of Study

Behavioral & Mental Health: Careers dedicated to mental and emotional well-being, including counseling, psychology, and psychiatric services aimed at supporting individuals through mental health challenges and promoting psychological health. Professionals in this field play a critical role in diagnosing and treating mental health disorders, providing therapy, developing strategies to improve overall mental wellness, and advocating for mental health awareness and policy changes.

Counseling & Mental Health Services

Biotechnology Research & Development: Careers focused on research and development in the medical field, including biotechnology, and scientific research. Professionals in this field develop new treatments, pharmaceuticals, devices, and innovative medical technologies to advance healthcare.

Biomedical Science
Biotechnology Research & Development

Community & Social Services: Careers that address the societal and environmental factors affecting health such as access to healthy foods, income and poverty, adequate child care, and access to education. This field includes work in public services, social work and case management, or nonprofit sectors with missions to address social inequalities and provide support services for all age ranges. This Sub-Cluster also includes clergy and spiritual support roles, which provide emotional and spiritual guidance to individuals and communities.

Community Health
Human Services
Social Work

Health Data & Administration: Careers centered on the management, analysis, and administration of health information and data. This Sub-Cluster encompasses fields such as health informatics, medical records, and healthcare administration. Professionals in this field are dedicated to enhancing healthcare delivery through effective technology and data management.

Health Informatics
Medical Assisting
Medical Record Keeping

Personal Care Services: Careers that encompass in-home and personal care support and offer esthetics and wellness services such as hairdressing, nail care, skincare, fitness, and massage therapy. Professionals in this field focus on enhancing personal appearance and promoting relaxation and well-being while remaining grounded in a thorough understanding of health and safety practices.

Barbering
Cosmetology
Massage & Spa Services

Physical Health: Careers in healthcare that directly affect the physical well-being of individuals by providing medical care, conducting diagnostics, offering therapeutic services, administering pharmaceuticals, and supporting nutrition and dental health. This Sub-Cluster encompasses healthcare from prebirth to death, addressing all stages from pediatrics to geriatrics and mortuary sciences. It also includes careers that offer alternative and complementary health services such as homeopathy, acupuncture, and others that focus on the holistic well-being of individuals.

Allied Health
Nursing
Pharmacy Tech
Physical Therapy
Radiology
Sports Medicine