

Education

Early Childhood Development • Education Administration & Leadership •
Learner Support & Community Engagement • Teaching, Training, & Facilitation



Education
(Skills/
Knowledge)



Work-Based
Learning



Local Career
Opportunities

Middle School

Middle School Core + Electives

High School

KPS High Schools +
Career and Technical Education
CCC – Educator Academy

Early/Middle College
Elementary Education,
Secondary Education

Community College

Skill-Based Credentials
American Sign Language; Coaching;
Leadership and Teamwork; Speech,
Language, and Hearing Sciences

Associate of Arts and Sciences
Early/Elementary Education,
Physical Education

University

Bachelor of Arts
Education, Education and Human
Development, Mathematics, Child
Development and Services, Occupational
Education Studies, Physical and Health
Teacher Education: K-12, Early Childhood
General and Special Education

EDP (K-12)

Dual Enrollment Choices

2+2 Transfer Programs

Job Shadowing, Co-Ops, Internships,
Apprenticeships, Summer Jobs

Internships,
Apprenticeships,
Full- and Part-Time Jobs

Internships,
Apprenticeships,
Full- and Part-Time Jobs

Childcare Workers	\$28,550
Library Assistants, Clerical	\$29,190
Information and Record Clerks	\$43,780

Self–Enrichment Teachers	\$39,060
Teaching Assistants	\$30,050
Life, Physical, and Social Science Technicians	\$50,630
Postsecondary Teachers	\$69,740

Elementary School Teachers	\$62,530
Management Analysts	\$83,250
Social Scientists and Related Workers	\$69,100
Middle School Teachers	\$62,630
Child, Family, and School Social Workers	\$58,610

Design Your Path to Your Promise
— Explore Where You Can Go.

Kalamazoo Public Schools



Education

Design Your Path to Your Promise — Here's How You Can Get There.

MIDDLE SCHOOL

English Language Arts	Math	Science	Social Studies	World Language	Enrichment	Career Readiness	Elective Focus
English	6 th Grade Math or Accelerated Math	6 th Grade Science	Social Studies	Spanish for Beginners (Elective)	Physical Ed./Band, Orchestra, or Choir	Life Skills	Tech Smart
English	7 th Grade Math or Accelerated Math	7 th Grade Science	Social Studies	Spanish Intermediate	Physical Ed./Band, Orchestra, or Choir	Life Skills	Tech Smart
English	8 th Grade Math or Algebra	Science/Robotics	Social Studies	Spanish 1	Physical Ed./Band, Orchestra, or Choir	Life Skills	Tech Smart

HIGH SCHOOL

English Language Arts	Math	Science	Social Studies	World Language	Enrichment	Career Readiness	Elective Focus
English 9 / Honors English	Algebra 1 or Geometry	Environ. Science & Biology (CEB)	World History	Spanish / French	PE	Tech Smart	See career programs below.
English 10 / Honors English	Geometry or Algebra II	Biology (DEE) or Chemistry or Physics	US History	Spanish / French	Health	College/Career Readiness	
English 11 A or Honors or AP	Algebra II or Math Modeling	Chemistry, Physics or Earth Science	Gov or AP Gov	Spanish / French / (future Arabic)	Band, Orchestra, or Choir	Economics	
College Eng. 12 or Honors Eng.	Statistics or Personal Finance	Geology, Astronomy, or APs	Social Studies Elective	Spanish / French / (future Arabic)	Fine Arts	Link Crew Leadership	

Grade	Possible Career-Connected Pathway Choices		Dual Enrollment Courses	Postsecondary Programs/Majors/Apprenticeships for Occupations in this Career Cluster	
9	Future Michigan Educator	Band, Orchestra, or Choir	<ul style="list-style-type: none"> Foundations of Education Early Literacy College Writing Teaching as a Profession Child Development Foundations of Inclusive Education in Elementary Ed Programs 	Certificates, Associate's Degrees, and Apprenticeships	Bachelor's and Advanced Degrees
10-12	Link Crew Leadership	Sociology		<ul style="list-style-type: none"> Early/Elementary Education, AA Physical Education, AA Leadership and Teamwork Certificate Speech, Language, and Hearing Sciences Certificate 	<ul style="list-style-type: none"> Education Child Dev. and Services Occupational Education Studies K-12 Physical and Health Teacher Education Early Childhood General and Special Education
10-12	Psychology	Parenting			
11-12	Teacher Academy	AP Psychology			

Kalamazoo Public Schools

College and Career Awareness & Exploration Resources

Higher Education



Early/Middle College Programs

Kalamazoo County Early/Middle College (EMC) is an innovative early college program, which gives students the opportunity to earn an associate degree or certificate with an additional year of high school.



Kalamazoo Valley Community College

Kalamazoo Valley Community College seeks to provide every student with clear, flexible program options that provide a mix of educational skills and experiences that will prepare students for advanced coursework at top universities and meaningful opportunities for employment in a changing world.



Kalamazoo College

Kalamazoo College offers qualified high school students the opportunity to enroll in courses while concurrently enrolled in high school during the fall, winter, and spring terms.



Western Michigan University

Dual enrollment through Early College Programs at WMU provides eligible high school students with credits that may be applied toward high school graduation requirements, as well as a college or university program.



The Kalamazoo Promise

Choosing a career path is one of the biggest and most important decisions you'll ever make. The good news is that The Promise is here to help you find and pursue the career path that fits you best.

Local Career Training Programs



Career Launch Kalamazoo

This modernized Youth Apprenticeship Program that provides exible occupational training programs that cultivate well-educated, highly skilled workers able to meet the demands of a competitive global economy in careers that are in high demand.



Kalamazoo RESA Career Connect Campus

New in the 2025-2026 school year, students will have the opportunity to participate in programs at the Career Connect Campus (CCC). The inaugural class of students at the CCC will learn from industry experts in a new, state-of-the-art facility.



Teach Kalamazoo

Kalamazoo's Grow Your Own (GYO) Teacher Residency program includes apprenticeships and numerous on-ramps into the teaching profession for undergraduate and graduate students, staff, parents, paraprofessionals, for anyone with an existing bachelor's degree, and/or anyone who is interested in entering the honorable and fulfilling profession of teaching.

Labor Market Tools



Michigan Pathfinder

Pathfinder uses current labor market, wage, and institutional data and metrics to help you create an individualized career roadmap. This free tool provides information to students, parents, and guidance staff to make informed choices about educational and career options.



Pure Michigan Talent Connect

Michigan's free online career exploration tool that provides information on in-demand careers and the degrees or credentials needed to pursue them.

College & Career Exploration and Resources



[Xello Career Exploration](#)

Kalamazoo Public Schools uses the Xello platform so students in grades K-12 can build self-knowledge and explore options beyond high school.



[Michigan Career Development Model](#)

The Michigan Career Development Model (MCDM) is a framework, guided by legislation that engages school communities, students, and their support networks in intentional and meaningful career awareness, exploration, and preparation.



[Advance CTE National Career Clusters Framework](#)

The National Career Clusters® Framework provides a shared structure and language for CTE program design across the United States. The new framework provides meaningful career exploration and preparation experiences through Career Technical Education (CTE) that prepare students for the changing and interconnected world of work.



[Michigan Pathfinder](#)

Pathfinder provides valuable information to help students make informed choices about educational and career options.



[O*NET Online](#)

O*Net provides a collection of resources to inform students' college and career journeys: a Career Exploration Tool, O*NET Interest Profiler, My Next Move, Career One Stop, and Get My Future.



[SAT/PSAT – College Board](#)

The SAT and PSAT are standardized tests meant to show colleges and universities how prepared students are for college by measuring key skills like reading comprehension, computational ability, and clarity of expression.



[EBSCO Learning Express](#)

EBSCO LearningExpress provides online platforms for academic skill building, standardized test preparation, and career-oriented digital content. It helps students prepare for college, explore careers, and accelerate their journey into careers.



[Credential Center](#)

Certifications demonstrate for employers that job candidates have specific skills or knowledge in an occupation, industry, or technology. This site helps students explore training associated with certifications and credentials.



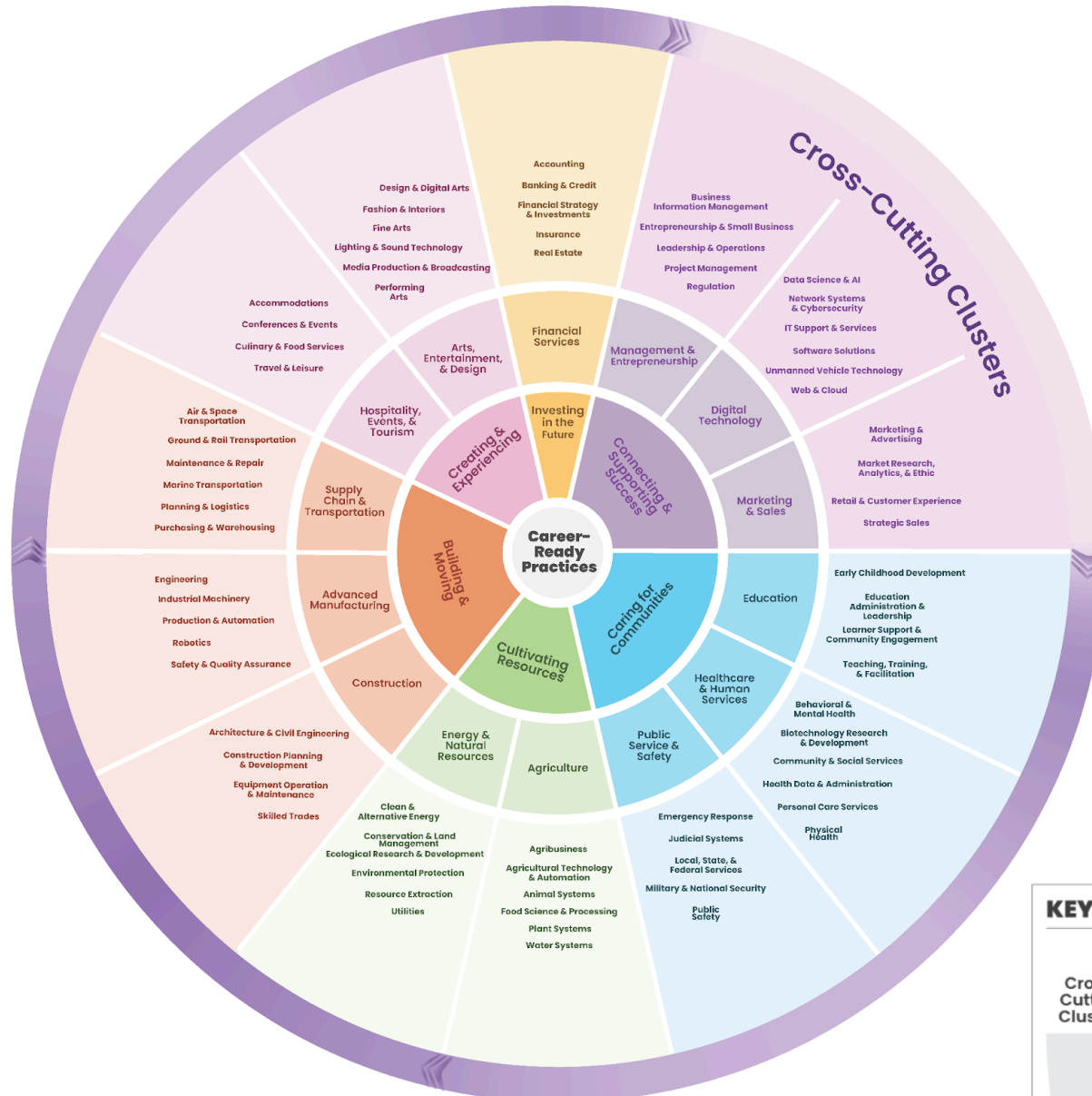
[Apprenticeship USA](#)

Discover apprenticeships across industries, how programs are started by employers, and how to become an apprentice.

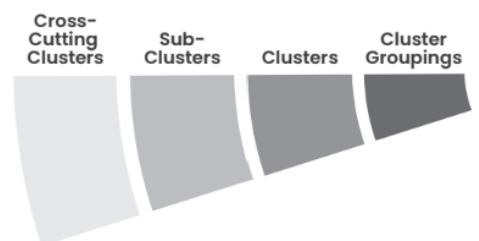


[ASVAB Career Exploration](#)

The Armed Services Vocational Aptitude Battery (ASVAB) is a multiple-aptitude battery that measures developed abilities and helps predict future academic and occupational success in the military.



KEY



Education: Transforming Lives & Enriching Futures Through Lifelong Learning

Cluster Definition: The Education Career Cluster spans careers aimed at fostering learning from early childhood to adulthood, including teaching, instructional design, counseling services, community engagement, learner support, and educator training. This Cluster emphasizes quality education standards and lifelong learning, preparing individuals for success through all life stages by nurturing knowledge, skills, and critical thinking and encouraging personal and societal growth in a constantly evolving world.

Sub-Clusters

Example Programs of Study

Early Childhood Development: Careers dedicated to nurturing the holistic growth of children from birth to 8 years old through education, care, and early intervention. Professionals in this field specialize in fostering physical, cognitive, emotional, and social development in early learners by applying proven and promising strategies for whole-child wellness.

Early Childhood Education
Developmental Education

Education Administration & Leadership: Careers in managing and leading educational institutions, developing policies, curating and organizing knowledge, leading teams, and conducting research to improve education. This Subcluster includes school and district administration, policy analysis, and research focused on optimizing school functions, implementing policies, and exploring ways to enhance learning. Professionals in this field work to ensure the effective operation of educational settings and promote continuous improvement through research and innovation.

Educational Leadership

Learner Support & Community Engagement: Careers focused on offering guidance and support to learners while building collaborative ties with families and communities. This field includes academic advising, library sciences, student health and wellness counseling, special education support, student life services in higher education, coaching, and career guidance within a school setting. This Sub-Cluster also includes community engagement practices that involve families, industry, and local resources for opportunities such as family support programs, work-based learning, and apprenticeships.

Professional Support Services
Library Science

Teaching, Training & Facilitation: Careers encompassing teaching and instructional design roles across diverse educational levels, from kindergarten through Grade 12 (K-12) to adult learning. This field includes integrating educational technology and emerging teaching methods into curriculum development and delivery. Careers in this Sub-Cluster also involve providing professional development and training for educators while facilitating learning experiences, and they involve providing coaching for individuals and groups. This field promotes lifelong learning in various settings, including schools, colleges, corporate environments, and community organizations.

Principles of Teaching