



Construction

Architecture & Civil Engineering • Construction Planning & Development •
Equipment Operations & Maintenance • Skilled Trades

Middle School

High School

Community College

University

Education
(Skills/
Knowledge)

Middle
School Core
+ Electives

KPS High Schools +
Career and Technical Education
CCC – Construction Trades, Electrical
Technology, HVAC, Plumbing, Welding,
Engineering in Wood Tech.

Early/Middle College

Welding Constant Current Processes COA
Welding Constant Voltage Processes COA

Skill-Based Credentials

CAD/CAM, Elect. Const., Elect. Control,
SMAW/GTA Welding, HVAC, Landscape Mgt,
Welding Tech.

Associate of Arts and Sciences

Architecture AS, Maintenance Mechanic –
Industrial AAS

Bachelor of Arts

Construction Engineering, Civil Drafting
and Civil Engineering, Geographic
Information Science and Cartography,
Landscape Architecture



EDP (K-12)

Dual Enrollment Choices

2+2 Transfer Programs

Work-Based
Learning

Job Shadowing, Co-Ops, Internships,
Apprenticeships, Summer Jobs

Internships,
Apprenticeships,
Full- and Part-Time Jobs

Internships,
Apprenticeships,
Full- and Part-Time Jobs



Local Career
Opportunities

Highway Maintenance Workers	\$49,940
Sheet Metal Workers	\$82,510
Operating Engineers and Other Construction Equipment Operators	\$57,620
Roofers	\$51,070
Millwrights	\$76,880

First-Line Supervisors of Construction Trades and Extraction Workers	\$69,930
Electricians	\$60,830
Plumbers, Pipefitters, and Steamfitters	\$77,960
Heating, Air Conditioning, and Refrigeration Mechanics and Installers	\$53,050

Construction Managers	\$101,980
Civil Engineers	\$81,380
Cost Estimators	\$71,370
Surveyors	\$68,550
Engineers, All Others	\$93,780

Kalamazoo Public Schools

Design Your Path to Your Promise
— Explore Where You Can Go.



PATHWAY 2 CAREERS



Construction

Design Your Path to Your Promise — Here's How You Can Get There.

MIDDLE SCHOOL

English Language Arts	Math	Science	Social Studies	World Language	Enrichment	Career Readiness	Elective Focus
English	6 th Grade Math or Accelerated Math	6 th Grade Science	Social Studies	Spanish for Beginners (Elective)	Physical Ed./Band, Orchestra, or Choir	Life Skills	Tech Smart
English	7 th Grade Math or Accelerated Math	7 th Grade Science	Social Studies	Spanish Intermediate	Physical Ed./Band, Orchestra, or Choir	Life Skills	Tech Smart
English	8 th Grade Math or Algebra	Science/Robotics	Social Studies	Spanish 1	Physical Ed./Band, Orchestra, or Choir	Life Skills	Tech Smart

HIGH SCHOOL

English Language Arts	Math	Science	Social Studies	World Language	Enrichment	Career Readiness	Elective Focus
English 9 / Honors English	Algebra 1 or Geometry	Environ. Science & Biology (CEB)	World History	Spanish	PE	Tech Smart	Band, Orchestra, or Choir or other career programs below.
English 10 / Honors English	Geometry or Algebra II	Biology (DEE) or Chemistry or Physics	US History	Spanish	Health	College/Career Readiness	
English 11 A or Honors or AP	Algebra II or Math Modeling	Earth Science	Gov or AP Gov	Spanish	Industrial/ Mech. Drafting	Economics	
College Eng. 12 or Honors Eng.	Business or Personal Finance	Geology	Social Studies Elective	Spanish	Drafting	Construction Trades	

Grade	Possible Career-Connected Pathway Choices		Dual Enrollment Courses	Postsecondary Programs/Majors for Occupations in this Career Cluster	
9		Industrial/Mechanical Drafting	<ul style="list-style-type: none"> Fundamentals of Tech Drawing Architect Blueprint Reading Theory 1: Applied Electricity Basic GMAW/FCAW Welding Shop Fundamentals Basic Electricity Fundamentals Machine Tool Ops 	Certificates, Associate's Degrees, and Apprenticeships	Bachelor's and Advanced Degrees
10-12	Drafting: General, Architectural, or Mechanical	Electrical Technology		<ul style="list-style-type: none"> Architecture, AS AutoCAD, COA Electrical Const. Certificate Welding Technologies HVAC Certificate Maintenance Mechanic – Industrial, AAS or Certificate Landscape Management Certificate 	<ul style="list-style-type: none"> Construction Engineering Civil Drafting and Civil Engineering
10-12	Construction Trades	Plumbing			<ul style="list-style-type: none"> Geographic Information Science and Cartography
12	Welding	HVAC			<ul style="list-style-type: none"> Landscape Architecture

Kalamazoo Public Schools

College and Career Awareness & Exploration Resources

Higher Education



Early/Middle College Programs

Kalamazoo County Early/Middle College (EMC) is an innovative early college program, which gives students the opportunity to earn an associate degree or certificate with an additional year of high school.



Kalamazoo Valley Community College

Kalamazoo Valley Community College seeks to provide every student with clear, flexible program options that provide a mix of educational skills and experiences that will prepare students for advanced coursework at top universities and meaningful opportunities for employment in a changing world.



Kalamazoo College

Kalamazoo College offers qualified high school students the opportunity to enroll in courses while concurrently enrolled in high school during the fall, winter, and spring terms.



Western Michigan University

Dual enrollment through Early College Programs at WMU provides eligible high school students with credits that may be applied toward high school graduation requirements, as well as a college or university program.



The Kalamazoo Promise

Choosing a career path is one of the biggest and most important decisions you'll ever make. The good news is that The Promise is here to help you find and pursue the career path that fits you best.

Local Career Training Programs



Career Launch Kalamazoo

This modernized Youth Apprenticeship Program that provides flexible occupational training programs that cultivate well-educated, highly skilled workers able to meet the demands of a competitive global economy in careers that are in high demand.



Kalamazoo RESA Career Connect Campus

New in the 2025-2026 school year, students will have the opportunity to participate in programs at the Career Connect Campus (CCC). The inaugural class of students at the CCC will learn from industry experts in a new, state-of-the-art facility.



Teach Kalamazoo

Kalamazoo's Grow Your Own (GYO) Teacher Residency program includes apprenticeships and numerous on-ramps into the teaching profession for undergraduate and graduate students, staff, parents, paraprofessionals, for anyone with an existing bachelor's degree, and/or anyone who is interested in entering the honorable and fulfilling profession of teaching.

Labor Market Tools



Michigan Pathfinder

Pathfinder uses current labor market, wage, and institutional data and metrics to help you create an individualized career roadmap. This free tool provides information to students, parents, and guidance staff to make informed choices about educational and career options.



Pure Michigan Talent Connect

Michigan's free online career exploration tool that provides information on in-demand careers and the degrees or credentials needed to pursue them.

College & Career Exploration and Resources



[Xello Career Exploration](#)

Kalamazoo Public Schools uses the Xello platform so students in grades K-12 can build self-knowledge and explore options beyond high school.



[Michigan Career Development Model](#)

The Michigan Career Development Model (MCDM) is a framework, guided by legislation that engages school communities, students, and their support networks in intentional and meaningful career awareness, exploration, and preparation.



[Advance CTE National Career Clusters Framework](#)

The National Career Clusters® Framework provides a shared structure and language for CTE program design across the United States. The new framework provides meaningful career exploration and preparation experiences through Career Technical Education (CTE) that prepare students for the changing and interconnected world of work.



[Michigan Pathfinder](#)

Pathfinder provides valuable information to help students make informed choices about educational and career options.



[O*NET Online](#)

O*Net provides a collection of resources to inform students' college and career journeys: a Career Exploration Tool, O*NET Interest Profiler, My Next Move, Career One Stop, and Get My Future.



[SAT/PSAT – College Board](#)

The SAT and PSAT are standardized tests meant to show colleges and universities how prepared students are for college by measuring key skills like reading comprehension, computational ability, and clarity of expression.



[EBSCO Learning Express](#)

EBSCO LearningExpress provides online platforms for academic skill building, standardized test preparation, and career-oriented digital content. It helps students prepare for college, explore careers, and accelerate their journey into careers.



[Credential Center](#)

Certifications demonstrate for employers that job candidates have specific skills or knowledge in an occupation, industry, or technology. This site helps students explore training associated with certifications and credentials.



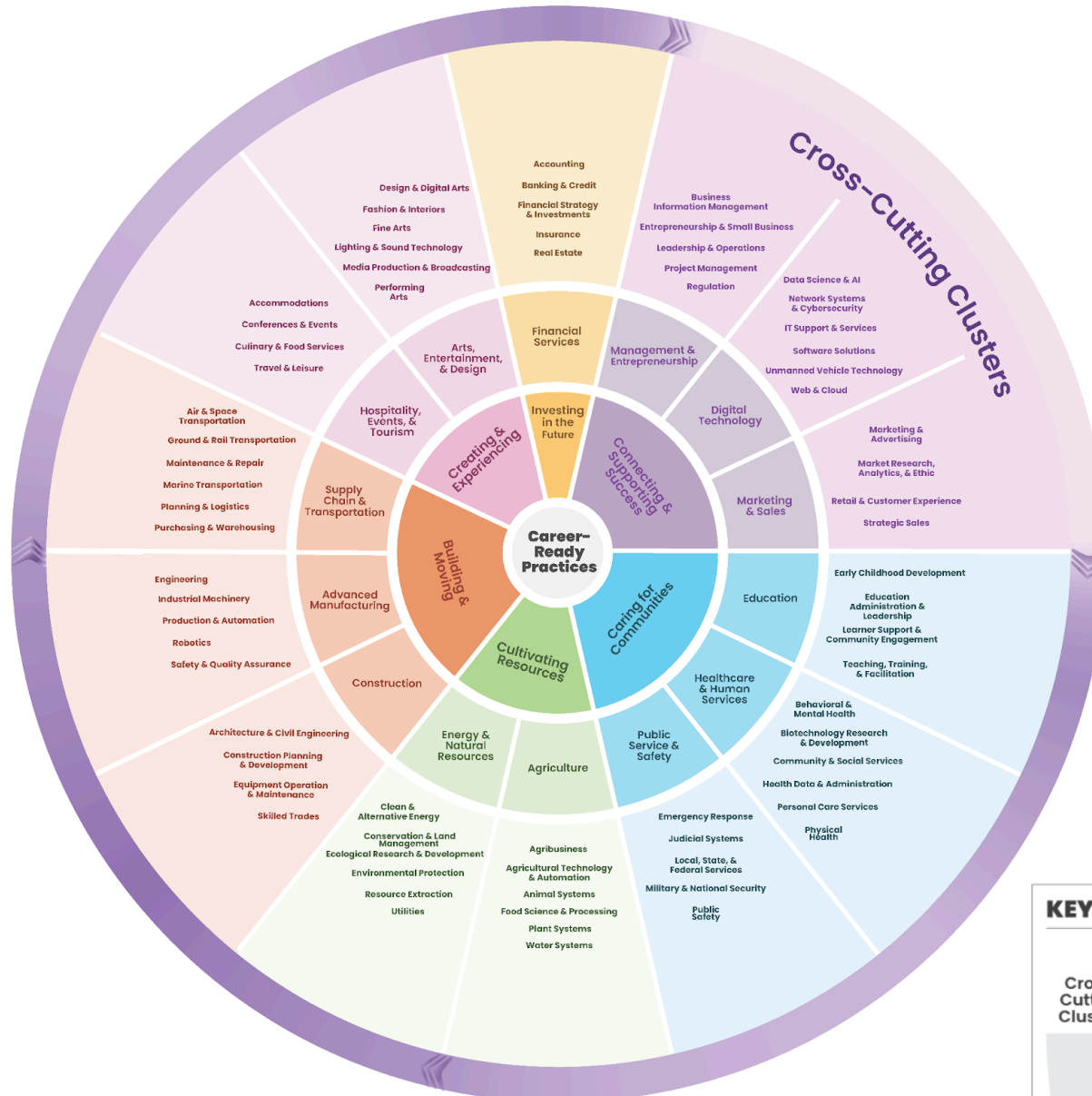
[Apprenticeship USA](#)

Discover apprenticeships across industries, how programs are started by employers, and how to become an apprentice.

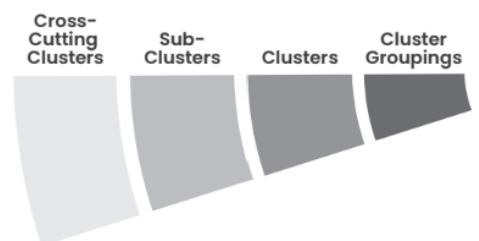


[ASVAB Career Exploration](#)

The Armed Services Vocational Aptitude Battery (ASVAB) is a multiple-aptitude battery that measures developed abilities and helps predict future academic and occupational success in the military.



KEY



Construction: Building Futures & Pioneering Sustainable Horizons

Cluster Definition: The Construction Career Cluster focuses on professions involved in designing, planning, managing, and executing projects in the built environment. It emphasizes sustainable building practices to ensure that structures are both environmentally responsible and resilient. Careers in this Cluster are pivotal in creating durable infrastructure that meets present needs without compromising future generations' ability to meet their own, covering a range of roles from architects and engineers to construction managers and skilled tradespeople.

Sub-Clusters

Example Programs of Study

Architecture & Civil Engineering: Careers combining the planning, design, and drafting of infrastructure, structures, and landscapes with the application of technical expertise through architecture and civil and structural engineering. Professionals in this field develop sustainable, safe, and esthetically pleasing spaces while ensuring compliance with regulations. This Sub-Cluster spans residential, commercial, industrial, and public infrastructure projects, requiring a blend of creativity, technical precision, and problem-solving to meet modern societal and environmental challenges.

Architectural Design
Drafting
Landscape Architecture

Construction Planning & Development: Careers emphasizing the critical initial stages of construction and development projects, including preconstruction activities, property development, and land use planning. This field involves site analysis, surveying, cost estimation, securing required permits, conducting feasibility studies, environmental compliance, and construction management. Professionals in this field engage in meticulous planning and preparation to integrate sustainable practices and reduce potential risks and delays, ensuring project success from start to finish.

Construction Management
Surveying

Equipment Operation & Maintenance: Careers skilled in managing and servicing the heavy equipment and machinery that are essential for building and infrastructure projects. Professionals in this field ensure that these vital tools operate efficiently and safely, combining technical knowledge with mechanical skills. This Sub-Cluster is crucial for the smooth execution of construction tasks, maintenance of machinery reliability, and adherence to safety standards.

Diesel Mechanics
Heavy Machine Operation

Skilled Trades: Careers focused on skilled work that is essential to constructing, maintaining, and repairing buildings and infrastructure including carpentry; welding; masonry; electrical; plumbing; and heating, ventilation, air conditioning, and refrigeration (HVAC-R). Professionals in the skilled trades play a key role in shaping the environment, combining hands-on skills with technical knowledge to ensure functionality and safety in both new and existing infrastructure and structures. Many skilled trades are also in high demand in the Advanced Manufacturing, Agriculture, and Energy and Natural Resources Clusters.

Carpentry
Electrical Systems
Green Construction
HVAC-R
Welding Technology