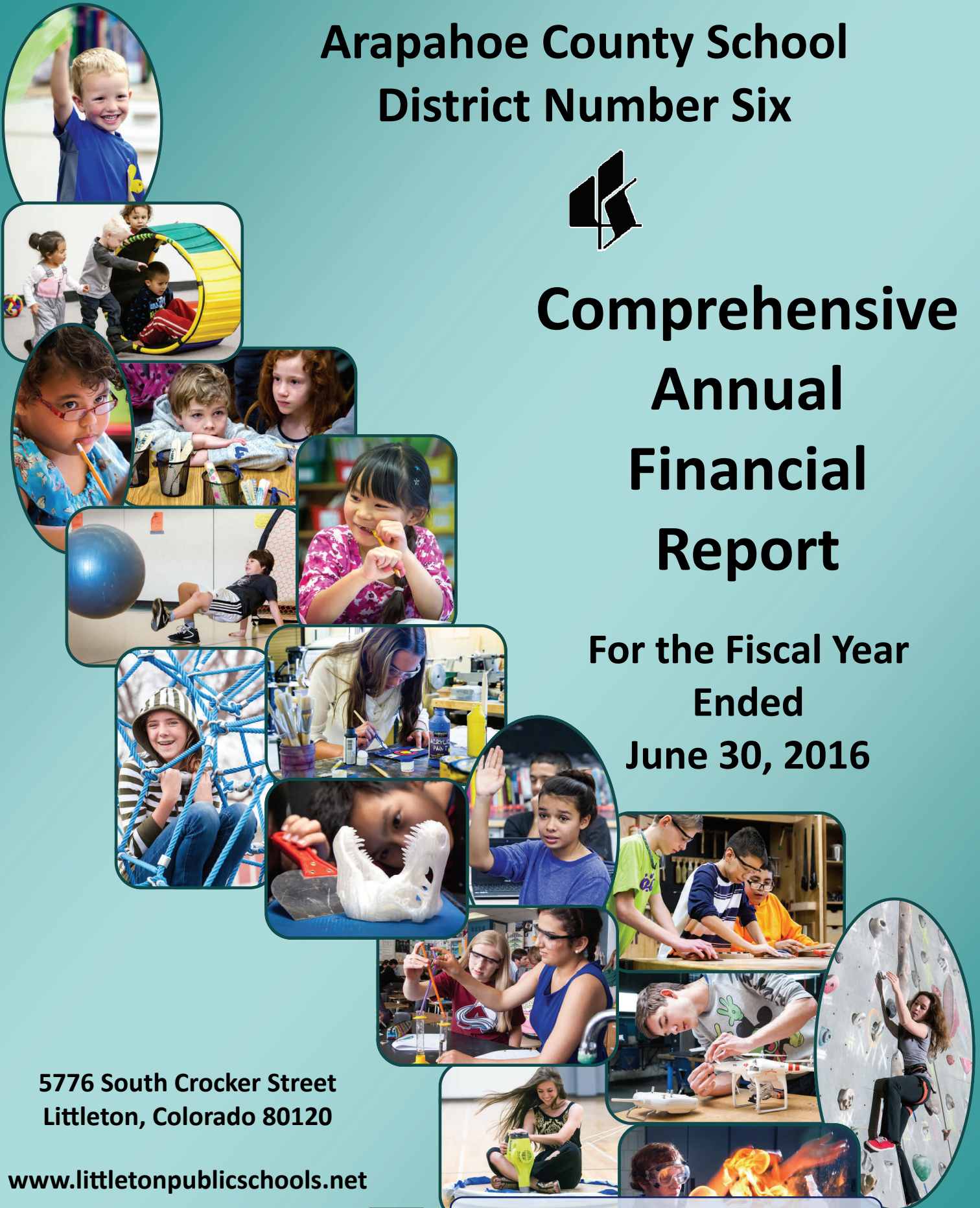


Arapahoe County School District Number Six



Comprehensive Annual Financial Report

For the Fiscal Year
Ended
June 30, 2016



5776 South Crocker Street
Littleton, Colorado 80120

www.littletonpublicschools.net



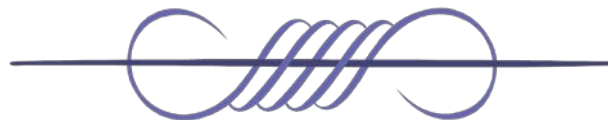
RECEIVED

By Justin L. Smith at 11:29 am, Nov 09, 2016

ON THE COVER—*From top left to right:* Mac Berry (The Village at Ames Preschool); Allison Garrido, Nathaniel Simonton-Crum, Kason Yogues, and Santiago Lopez (The Village North Preschool); Laylah Jones (Hopkins Elementary School); Gussie Maynard and Kaitlyn Meyers (Lanski Elementary School); Diego Jeffers (Hopkins Elementary School); Taylor Karston (Hopkins Elementary School); Sierra Kimes (Euclid Middle School); Kelsey Weiser (Goddard Middle School); Stephen Nguyen (Goddard Middle School); Sophie Martinez (Euclid Middle School); Cole Lockhart, Carlos Jimenez, and Higinio Moreno (Goddard Middle School); Klarissa Schwiethale and Yasmine Lame (Arapahoe High School); Adam Berlin (Heritage High School); Molly Zartman (Heritage High School); Alexa Johnson (Littleton High School); and Colin Korisky (Heritage High School).

ARAPAHOE COUNTY
SCHOOL DISTRICT
NUMBER SIX
Littleton, Colorado

Comprehensive Annual
Financial Report
For the Fiscal Year
Ended June 30, 2016



Prepared by Financial Services

Diane Doney

Assistant Superintendent of Business Services/Chief Financial Officer

Donna Villamor

Director of Finance and Risk Management

ARAPAHOE COUNTY SCHOOL DISTRICT NUMBER SIX
Comprehensive Annual Financial Report
For the Fiscal Year Ended June 30, 2016

TABLE OF CONTENTS

INTRODUCTORY SECTION

Letter of Transmittal.....	1
GFOA Certificate of Achievement for Excellence in Financial Reporting.....	7
Principal Officials.....	8
Organizational Chart.....	9

FINANCIAL SECTION

Independent Auditors' Report	10
Management's Discussion and Analysis	12
Basic Financial Statements:	
Government-Wide Financial Statements:	
Statement of Net Position	22
Statement of Activities	23
Fund Financial Statements:	
Balance Sheet—Governmental Funds	24
Statement of Revenues, Expenditures, and Changes in Fund Balances—Governmental Funds.....	25
Reconciliation of the Statement of Revenues, Expenditures, and Changes in Fund Balances of Governmental Funds to the Statement of Activities.....	26
Statement of Fiduciary Assets and Liabilities—Fiduciary Fund (Agency Fund)	27
Notes to Basic Financial Statements	28
Required Supplementary Information:	
General Fund—Budgetary Comparison Schedule.....	49
Risk Management Fund—Budgetary Comparison Schedule	50
Notes to Required Supplementary Information.....	51
Schedules of Required Supplementary Information.....	52
Combining and Individual Fund Statements and Schedules:	
Nonmajor Governmental Funds.....	53
Combining Balance Sheet—Nonmajor Governmental Funds	54
Combining Statement of Revenues, Expenditures, and Changes in Fund Balances—Nonmajor Governmental Funds.....	56

Budgetary Comparison Schedules:

Designated Purpose Grants Fund	58
Extended Day Care Program Fund	59
Nutrition Services Fund	60
Student Athletic and Activities Fund.....	61
Capital Projects Fund	62
Debt Service Fund	63
Capital Projects—Building Fund	64
Statement of Changes in Assets and Liabilities—Fiduciary Fund (Agency Fund)	65
Combining Statement of Net Position—Component Units	66
Combining Statement of Activities—Component Units	67

STATISTICAL SECTION

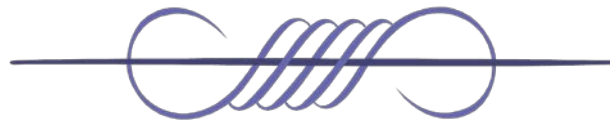
Statistical Section	68
Net Position by Component	69
Expenses, Program Revenues, and Net (Expense)/Revenue.....	71
General Revenues and Total Change in Net Position	73
Governmental Funds, Fund Balances	75
Governmental Funds, Revenues, Expenditures, and Debt Service Ratio	76
Assessed Value and Estimated Actual Value of Taxable Property	77
Direct and Overlapping Property Tax Rates	79
Principal Property Taxpayers	80
Property Tax Levies and Collections	81
Ratios of Outstanding Debt by Type	82
Ratios of General Bonded Debt Outstanding.....	83
Direct and Overlapping Governmental Activities Debt	84
Legal Debt Margin Information.....	85
Demographic and Economic Statistics	86
Principal Employers	87
Full-Time Equivalent District Employees by Type	88
Operating Statistics.....	89
Schedule of Insurance	90
Facilities Statistics	91

COMPLIANCE SECTION

Independent Auditors’ Report on Internal Control Over Financial Reporting and on Compliance and Other Matters Based on an Audit of Financial Statements Performed in Accordance With <i>Government Auditing Standards</i>	92
---	----

Independent Auditors' Report on Compliance for Each Major Federal Program and Report on Internal Control Over Compliance Required by the Uniform Guidance	94
Schedule of Findings and Questioned Costs	96
Schedule of Expenditures of Federal Awards	98
Note to the Schedule of Expenditures of Federal Awards	100
Auditors' Integrity Report	101

INTRODUCTORY SECTION



October 14, 2016

Board of Education and Citizens
Arapahoe County School District Number Six
Littleton, Colorado

The Comprehensive Annual Financial Report (CAFR) of the Arapahoe County School District Number Six (the district) as of June 30, 2016, and for the fiscal year then ended, is hereby submitted. Colorado state law requires that each local government undergo an annual audit of the financial statements by independent certified public accountants in accordance with generally accepted auditing standards. This report fulfills that requirement.

Responsibility for the accuracy, completeness, and fairness of the information presented in this report rests with the management of the district, based upon a comprehensive framework of internal control that it has established for this purpose. The district's financial services department prepared this report, which contains management's representations concerning the finances of the district. To the best of our knowledge and belief, the enclosed data are accurate in all material respects, reported in a manner to present fairly the financial position and results of operations of the district's funds. As the cost of internal controls should not outweigh the benefits, the outcome is to provide reasonable, rather than absolute, assurance the financial statements are free of any material misstatements.

The CAFR is presented in conformity with Statement No. 34 of the Governmental Accounting Standards Board (GASB), titled *Basic Financial Statements—and Management's Discussion and Analysis—for State and Local Governments (as amended)*. This reporting standard is intended to parallel private sector reporting by consolidating governmental activities into a single total column for government-wide activities. GASB Statement No. 34 also requires that management provide a narrative introduction, overview, and analysis to accompany the basic financial statements in the form of Management's Discussion and Analysis (MD&A). This letter of transmittal is designed to complement and should be read in conjunction with the MD&A.

This is the second year the CAFR is required to conform to GASB Statement No. 68, *Accounting and Financial Reporting for Pensions (as amended)*, which establishes new financial reporting requirements for most governments that provide pension benefits through a multiple-employer, cost-sharing defined benefit pension plan. Statement No. 68 requires the district to record a proportionate share of the unfunded pension liability of Public Employee's Retirement Association of Colorado (PERA). The district has no legal obligation to fund any shortfall, nor does it have any liability to affect funding, benefits, or annual required contribution decisions made by PERA.

Fax Numbers

Board/Superintendent 303-347-3439 • Instruction 303-347-4394 • Financial Services 303-347-3460
Human Resources 303-347-3384 • Operations/Maintenance 303-347-3454
Communications 303-347-3476

Serving the cities of Littleton and Centennial, southern suburbs of Denver, Colorado

Profile of the District

Arapahoe County School District Number Six, commonly referred to as Littleton Public Schools (LPS), is a political subdivision of the State of Colorado and a corporate body duly organized in 1889 for the purpose of operating and maintaining an educational program for the school-age children residing within its boundaries. The district provides a full range of educational programs and services, including K–12 instruction, special education and special education preschool, vocational education, and numerous other programs. The number of students enrolled in fiscal year 2015–2016 was 15,353.

The district encompasses approximately 28 square miles in western Arapahoe County in the southern portion of the Denver metropolitan area. The district's boundaries include the town of Columbine Valley, the majority of the city of Littleton, and portions of the municipalities of Bow Mar, Centennial, Englewood, and Greenwood Village.

The district is governed by a five-member Board of Education (the Board), whose members are elected by the qualified electors within the district's boundaries. General duties which the Board is empowered to perform include the powers to employ all personnel necessary to maintain the operations and carry out the educational programs of the district and pay their compensation, to fix attendance boundaries, to establish annual budgets, to determine the educational programs to be offered in the schools of the district, to prescribe the textbooks of any course of instruction or study in such educational programs, and to levy a property tax on both real and personal properties located within the district's boundaries.

The district includes as component units two charter schools. The charter schools are public schools, authorized by state statutes, and under the supervision of the Board providing alternatives in education for pupils, parents, and teachers. Each charter school has a separate governing board, but they are fiscally dependent on the district for the majority of their funding. The component units are discretely presented in the CAFR and have separate, audited financial statements.

Factors Affecting Financial Condition

State funding. The state has not fully funded the Colorado Public School Finance Act of 1994 (SFA) based on the full requirement of the state constitution's Amendment 23 since the national fiscal crisis in 2008. The SFA for fiscal year 2015–2016 included an 11.7 percent reduction (negative factor) or an \$830.7 million statewide K–12 funding reduction. The district's program revenue negative factor reduction for the 2015–2016 school year was decreased by \$1.0 million from the previous year to \$13.9 million. For 2016–2017, the state funded inflation of 1.2 percent and held the negative factor to 11.7 percent. The negative factor results in another \$13.9 million annual loss of district program revenue when compared to the state fully funding the program revenue. The negative factor was originally adopted in 2008 by the state's General Assembly to reduce the overall statewide contribution to K–12 education since local funding of the SFA is primarily fixed. The district continues to incorporate budget balancing strategies, including program reductions along with additional revenues from the \$12.0 million property tax mill levy override approved by local voters in 2010, to help offset the state's funding cuts.

State and local economy. The state's economic picture is important to the district because a major source of funding for the district's General Fund is received through the SFA established by the state legislature. Colorado's economy continues to perform solidly, considering the challenges faced by the oil and gas industry and the sluggish global economy. Colorado has among the lowest unemployment rate in the country, seventh lowest in May, and the demand for workers in the state remains strong. The tight labor market is making it hard for businesses to grow. The state's job growth rate is expected to be 2.5 percent, slower than the 3.5 percent in 2015; however, it's still above the national job growth rate of 1.8 percent. Colorado's unemployment rate is expected to average 3.3 percent in 2016, below the national average of 4.8 percent. Colorado's strong population growth and growth in home values and rents is causing housing construction to ramp up, which will boost the economy going forward.

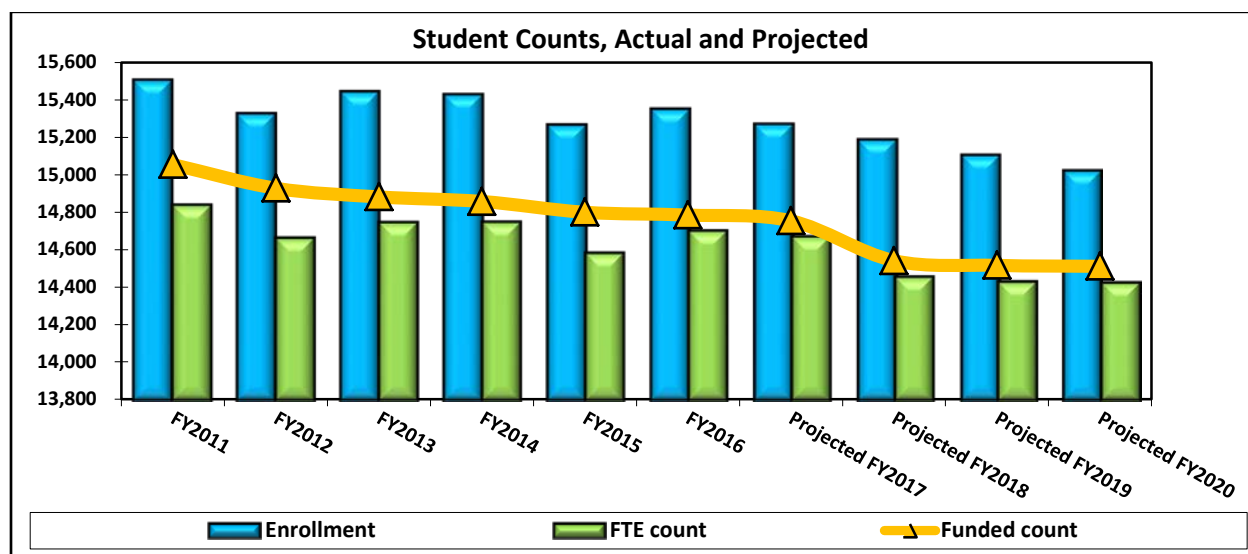
In 1992, Colorado voters approved a measure, known as the Taxpayer Bill of Rights (TABOR), which amended the state's constitution and restricts revenues for all levels of government (state, local, and schools). Under TABOR, state and local governments cannot raise tax rates without voter approval and cannot spend revenues collected under existing tax rates without voter approval if revenues grow faster than the rate of inflation and population growth. Revenue in excess of the TABOR limit, commonly referred to as the "TABOR surplus," must be refunded to taxpayers, unless voters approve a revenue change as an offset in a referendum. In November 2005, voters approved Referendum C, which allowed the state to retain all revenues through fiscal year 2009–2010 and set a new cap on revenue starting in fiscal year 2010–2011. Colorado's economy has continued to improve into 2016. Due to taxable income increasing at such a quick rate, overall tax revenues growing, and the statewide unemployment rate declining, TABOR revenue in 2014–2015 exceeded the Referendum C cap, triggering a TABOR refund in fiscal year 2015–2016. Based on the state's forecast for 2015–2016, state revenue subject to TABOR is expected to be less than the Referendum C cap; therefore, no refund is expected. However, forecasted state revenue in 2016–2017 and 2017–2018 is expected to prompt TABOR refunds. Despite K–12 funding still being \$830.7 million below what was agreed upon by voters, the excess revenue would have to be returned to taxpayers.

The Office of State Planning and Budgeting is forecasting a revenue increase of 4.5 percent for the General Fund for fiscal year 2016–2017. This is \$160.6 million lower when compared to the June 2016 forecast. General Fund revenue projections for 2017–2018 are expected to increase 5.0 percent. The State Education Fund continues to support a larger share of education funding than it has historically, thus decreasing its fund balance to just over \$100 million in 2016–2017, a drop of 63.2 percent. Revenue for this fund is derived from taxable income and follows trends in individual and corporate income tax revenue collections.

Enrollment and demographics. The district updated its demographic study in October 2012, which provided more insight surrounding the future enrollment expectations. Long-term projections of students are expected to continue to decline but at a slower rate into the foreseeable future. Birth rates within the district are not significantly increasing, but the real estate market appears to be turning properties over to younger residents with children of school age. The district is anticipating stable student enrollment in upcoming school years through 2019–2020. Stable and declining enrollment, along with the per-pupil revenue cuts (negative factor) incorporated in the state's SFA,

continues to challenge the district to provide services and keep a balanced budget while maintaining necessary reserves for long-term fiscal stability.

In fiscal year 2015–2016, the district’s enrollment increased slightly by 84 students to 15,353 students. Preliminary membership counts for the 2016–2017 school year indicate that enrollment will decrease slightly; however, demographic information indicates that, while in-district student enrollment and funded pupil counts most likely will continue to decline, they are starting to stabilize into the foreseeable future. The student full-time equivalent (FTE) count is less than enrollment mostly due to half-day kindergarten students and other part-time students. The actual SFA funded count allows for the current year FTE count to be averaged with up to four previous years’ counts.



Major Initiatives

The *Anticipated Funding Needs—Short- and Long-Term White Paper*, presented to the Board of Education in June 2011, outlined critical student needs for academic success. The approved \$11.5 million of one-time spending was funded with the initial year of property tax collections from the 2010 mill levy override. The student needs that were funded include curriculum aligned with new state standards, student interventions, and technology. During the fiscal year 2015–2016, \$1.1 million was spent primarily on technology, the implementation of new state standards, and new curriculum materials. As of June 30, 2016, \$2.5 million remains in the General Fund assigned fund balance and is expected to be spent over the next two fiscal years.

In November 2013, the voters approved \$80 million of general obligation bonds for facility improvements. All of the bonds have been issued, resulting in \$5.7 million in premiums and \$2.6 million in coupons, making total bond proceeds \$88.3 million. The Citizens’ Bond Oversight Committee (CBOC) has been charged to monitor the timeline and budget of the master schedule of projects. The committee reports to the Board of Education on a quarterly basis. All but \$5.0 million is anticipated to be spent by June 30, 2017. The district has hired an investment management company to assist with the investment of these funds.

Long-Term Financial Planning

The district's long-range financial projections are regularly updated for review and consideration by the Board. These include forecasts of student enrollment, upon which school funding is computed. Without additional K–12 funding, the district's current financial forecast indicates that budgetary efficiencies will need to be sought and considered by the Board in the near future. If additional funding under the SFA becomes available, a multi-year implementation plan will be developed in alignment with the Board's strategic plan during calendar year 2017. This plan would then be incorporated into the district's long-range financial forecasting and planning model.

Strategic Plan

The superintendent and staff work closely with the Board to ensure that their vision and strategic plan is fulfilled. In November 2014, the Board approved revisions to the strategic plan to better guide the work of the district, students, and community and align the district's direction to coincide with eleven core beliefs. The Board's vision is, "Extraordinary learning, exceptional community, expanded opportunity, and success for all students." The strategic plan includes ten focus areas to support the mission statement, "To educate all students for the future by challenging every individual to continuously learn, achieve, and act with purpose and compassion in a safe and secure environment."

- Enhance instructional systems and career pathways that maximize achievement for all students and integrate knowledge and skills relevant to 21st century career choices.
- Expand utilization of instructional technology with appropriate use for student achievement while providing the infrastructure for organizational efficiency and effectiveness.
- Provide an educational and work environment that supports professional learning and collaborative work for all staff.
- Promote, sustain, and create quality programs that make Littleton Public Schools the uniquely preferred choice for families inside and outside the district.
- Engage the community and parents as active partners in the objectives, activities, and performance of the district and its students.
- Optimize the use of district resources and facilities to meet student learning needs while operating the district efficiently.
- Promote and provide a safe environment that fosters caring, respect, and compassion for others.
- Enhance and support quality early childhood and childcare programs.
- Educate and support staff, parents, and community to address diverse student learning by providing access and opportunities for all students.
- Partner with parents and community to expand and enhance programs that address the physical, social, and emotional well-being of students, families, and staff.

The environment should foster community engagement, staff collaboration, and student learning. The district will continue to address the diverse community needs and keep the public involved as active partners in increasing achievement levels, a major component of the LPS strategic plan. LPS has established a District Achievement Goal that states: *One hundred percent of LPS students will graduate prepared for meaningful post-secondary opportunities.*

Annual Audit

State statutes require an annual audit by independent certified public accountants. The accounting firm of CliftonLarsonAllen LLP serves as the independent auditors for the district. In addition to meeting the requirements set forth in state law, the audit was also designed to meet the requirements of *Government Auditing Standards*, issued by the Comptroller General of the United States, and the U.S. Office of Management and Budget Circular A-133.

Awards and Acknowledgements

The Government Finance Officers Association (GFOA) awarded a Certificate of Achievement for Excellence in Financial Reporting to the district for its CAFR for the fiscal year ended June 30, 2015. In order to be awarded the Certificate of Achievement, the district published an easily readable and efficiently organized CAFR. That report satisfied both Generally Accepted Accounting Principles (GAAP) and applicable legal requirements. The Certificate of Achievement is valid for a period of one year. We believe that our current CAFR continues to meet the award program's requirements, and we are submitting it to GFOA to determine its eligibility for a new Certificate of Achievement.

Additionally, the district received the Popular Annual Financial Report (PAFR) award by GFOA for the fiscal year ended June 30, 2015. A PAFR extracts information from the CAFR and is designed to be easily understood to the general public and other interested parties without a background in public finance.

In addition, the Meritorious Budget Award was conferred by the Association of School Business Officials International to the district for its fiscal year 2015–2016 budget document. In order to qualify for the Meritorious Budget Award, the district's budget document was judged to be proficient in several categories, including as a policy document, a financial plan, an operations guide, and a communications device.

The preparation of the CAFR on a timely basis was made possible by the dedicated service of the entire staff of financial services, grant administrators, and printing services. Each department member has our sincere appreciation for the contributions made in the preparation of this report.

In closing, we wish to thank the members of the Board of Education for their interest, leadership, and support for maintaining the highest standards of professionalism in the management of the district's finances.

Respectfully submitted,



Brian Ewert

Superintendent



Diane Doney

Assistant Superintendent of Business Services/Chief Financial Officer

ARAPAHOE COUNTY SCHOOL DISTRICT NUMBER SIX
CAFR AWARD CERTIFICATE



Government Finance Officers Association

**Certificate of
Achievement
for Excellence
in Financial
Reporting**

Presented to

**Arapahoe County
School District Number Six
Colorado**

For its Comprehensive Annual
Financial Report
for the Fiscal Year Ended

June 30, 2015

A handwritten signature in black ink, appearing to read 'Jeffrey R. Emen', is written in a cursive style.

Executive Director/CEO

ARAPAHOE COUNTY SCHOOL DISTRICT NUMBER SIX
PRINCIPAL OFFICIALS

Board of Education



Jack Reutzel
President
Term: 2013–2017



Carrie Warren-Gully
Vice President
Term: 2013–2017



Robert Reichardt
Secretary
Term: 2015–2019



Jim Stephens
Assistant Secretary
Term: 2015–2019



Kelly Perez
Treasurer
Term: 2013–2017

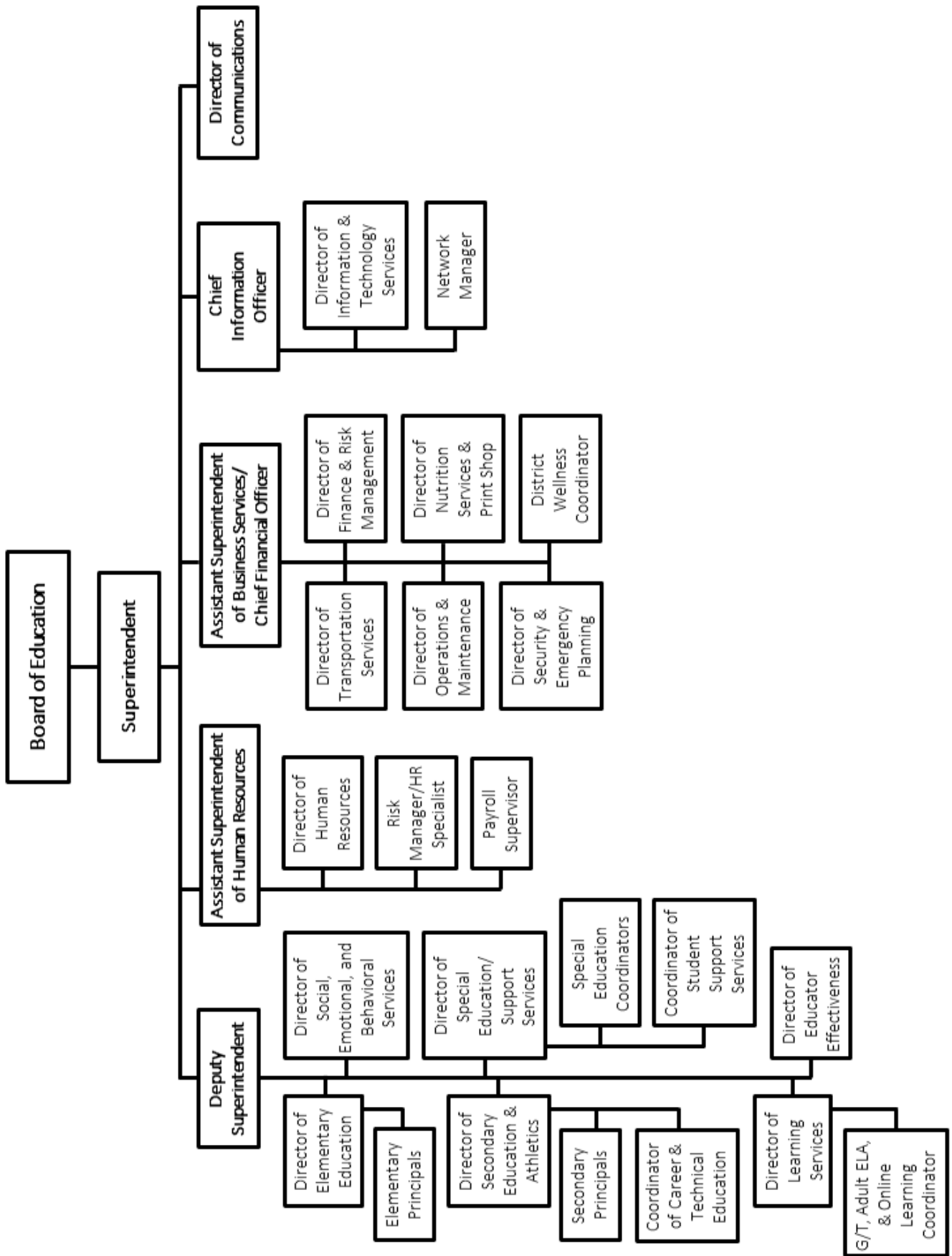
Superintendent and Superintendent’s Staff

Brian Ewert.....Superintendent
Connie Bouwman Deputy Superintendent
Mike Jones Assistant Superintendent of Human Resources
Diane DoneyAssistant Superintendent of Business Services/Chief Financial Officer
Mark Lindstone Chief Information Officer
Diane Leiker.....Director of Communications

MISSION STATEMENT

To educate all students for the future by challenging every individual to continuously learn, achieve, and act with purpose and compassion in a safe and secure environment.

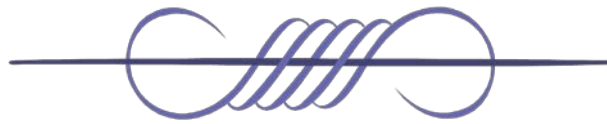
ARAPAHOE COUNTY SCHOOL DISTRICT NUMBER SIX
ORGANIZATIONAL CHART



This page left blank and
unnumbered intentionally
for presentation purposes



FINANCIAL SECTION





INDEPENDENT AUDITORS' REPORT

Board of Education
Arapahoe County School District Number Six
Littleton, Colorado

Report on the Financial Statements

We have audited the accompanying financial statements of the governmental activities, the aggregate discretely presented component units, each major fund, and the aggregate remaining fund information of Arapahoe County School District Number Six, as of and for the year ended June 30, 2016, and the related notes to the financial statements, which collectively comprise the entity's basic financial statements as listed in the table of contents.

Management's Responsibility for the Financial Statements

Management is responsible for the preparation and fair presentation of these financial statements in accordance with accounting principles generally accepted in the United States of America; this includes the design, implementation, and maintenance of internal control relevant to the preparation and fair presentation of financial statements that are free from material misstatement, whether due to fraud or error.

Auditors' Responsibility

Our responsibility is to express opinions on these financial statements based on our audit. We conducted our audit in accordance with auditing standards generally accepted in the United States of America and the standards applicable to financial audits contained in *Government Auditing Standards*, issued by the Comptroller General of the United States. Those standards require that we plan and perform the audit to obtain reasonable assurance about whether the financial statements are free from material misstatement.

An audit involves performing procedures to obtain audit evidence about the amounts and disclosures in the financial statements. The procedures selected depend on the auditors' judgment, including the assessment of the risks of material misstatement of the financial statements, whether due to fraud or error. In making those risk assessments, the auditor considers internal control relevant to the entity's preparation and fair presentation of the financial statements in order to design audit procedures that are appropriate in the circumstances, but not for the purpose of expressing an opinion on the effectiveness of the entity's internal control. Accordingly, we express no such opinion. An audit also includes evaluating the appropriateness of accounting policies used and the reasonableness of significant accounting estimates made by management, as well as evaluating the overall presentation of the financial statements.

We believe that the audit evidence we have obtained is sufficient and appropriate to provide a basis for our audit opinions.

Opinions

In our opinion, the financial statements referred to above present fairly, in all material respects, the respective financial position of the governmental activities, the aggregate discretely presented component units, each major fund, and the aggregate remaining fund information of Arapahoe County School District Number Six as of June 30, 2016, and the respective changes in financial position for the year then ended in accordance with accounting principles generally accepted in the United States of America.

Other Matters

Required Supplementary Information

Accounting principles generally accepted in the United States of America require that the management's discussion and analysis, budgetary comparison information, and pension schedules as listed in the table of contents be presented to supplement the basic financial statements. Such information, although not a part of the basic financial statements, is required by the Governmental Accounting Standards Board who considers it to be an essential part of financial reporting for placing the basic financial statements in an appropriate operational, economic, or historical context. We have applied certain limited procedures to the required supplementary information in accordance with auditing standards generally accepted in the United States of America, which consisted of inquiries of management about the methods of preparing the information and comparing the information for consistency with management's responses to our inquiries, the basic financial statements, and other knowledge we obtained during our audit of the basic financial statements. We do not express an opinion or provide any assurance on the information because the limited procedures do not provide us with sufficient evidence to express an opinion or provide any assurance.

Other Information

Our audit was conducted for the purpose of forming opinions on the financial statements that collectively comprise Arapahoe County School District Number Six's basic financial statements. The combining and individual fund and component unit financial statements and schedules and the Auditor's Integrity Report are presented for purposes of additional analysis and are not a required part of the basic financial statements. The Schedule of Expenditures of Federal Awards, as required by Title 2 U.S. Code of Federal Regulations Part 200, Uniform Administrative Requirements, Cost Principles, and Audit Requirements for Federal Awards, is also presented for purposes of additional analysis and is not a required part of the basic financial statements.

The combining and individual fund and component unit financial statements and schedules, the Auditors' Integrity Report, and the schedule of expenditures of federal awards are the responsibility of management and were derived from and relate directly to the underlying accounting and other records used to prepare the basic financial statements. Such information has been subjected to the auditing procedures applied in the audit of the basic financial statements and certain additional procedures, including comparing and reconciling such information directly to the underlying accounting and other records used to prepare the basic financial statements or to the basic financial statements themselves, and other additional procedures in accordance with auditing standards generally accepted in the United States of America. In our opinion, the information is fairly stated, in all material respects, in relation to the basic financial statements as a whole.

The introductory section and statistical section listed in the table of contents have not been subjected to the auditing procedures applied in the audit of the basic financial statements, and accordingly, we do not express an opinion or provide any assurance on them.

Other Reporting Required by Government Auditing Standards

In accordance with *Government Auditing Standards*, we have also issued our report dated October 14, 2016, on our consideration of Arapahoe County School District Number Six's internal control over financial reporting and on our tests of its compliance with certain provisions of laws, regulations, contracts, and grant agreements and other matters. The purpose of that report is to describe the scope of our testing of internal control over financial reporting and compliance and the result of that testing, and not to provide an opinion on internal control over financial reporting or on compliance. That report is an integral part of an audit performed in accordance with *Government Auditing Standards* in considering Arapahoe County School District Number Six's internal control over financial reporting and compliance.



CliftonLarsonAllen LLP

Greenwood Village, Colorado
October 14, 2016

Management's Discussion and Analysis



This page left blank and
unnumbered intentionally
for presentation purposes



ARAPAHOE COUNTY SCHOOL DISTRICT NUMBER SIX
Management's Discussion and Analysis
As of and For the Fiscal Year Ended June 30, 2016

As management of the Arapahoe County School District Number Six, Arapahoe County, Colorado (the district), we offer readers of the district's Comprehensive Annual Financial Report this narrative and analysis of the financial activities of the district for the fiscal year ended June 30, 2016. We encourage readers to consider the information presented here in conjunction with additional information that can be found in the letter of transmittal on pages 1–6.

Financial Highlights

- Beginning June 30, 2015, the Governmental Accounting Standards Board (GASB) issued Statement No. 68, *Accounting and Financial Reporting for Pensions*, which established new financial reporting requirements for most governments that provide pension benefits through a multiple-employer cost-sharing, defined-benefit pension plan. District employees, including the two charter schools' employees, are in a program administered by the Public Employee's Retirement Association of Colorado (PERA). Statement No. 68 requires the district and its charter schools to record a proportionate share of PERA's unfunded pension liability. The district and its charter schools have no legal obligation to fund any shortfall, nor do they have any liability to affect funding, benefits, or annual required contribution decisions made by PERA.
- The liabilities and deferred inflows of resources of the district, the primary government, exceeded assets and deferred outflows of resources at June 30, 2016, by \$223.5 million, primarily due to the net pension liability, noted above, of \$325.7 million.
- The financial position of the primary government decreased as the total net position decreased by \$14.4 million, primarily from the pension expense of \$30.9 million, net of \$16.9 million employer contribution expenditures due to the requirement of GASB Statement No. 68.
- The total cost of basic programs increased \$9.2 million, or 5.0 percent, to \$192.0 million due to the requirement of GASB Statement No. 68 and Board-approved spending of one-time dollars.
- Revenues increased \$6.7 million, or 3.9 percent, to \$177.6 million due to an increase in state funding for inflation.
- The net cost of governmental activities increased \$9.7 million, or 6.2 percent, primarily due to the inclusion of the pension expense of \$30.9 million, net of the \$16.9 million employer contribution expenditures due to the requirement of GASB Statement No. 68.

Overview of the Financial Statements

Management's discussion and analysis is intended to serve as an introduction to the district's annual report and basic financial statements. The financial section of the annual report consists of four parts: management's discussion and analysis, basic financial statements, required supplementary information, and combining and individual fund statements and schedules. The basic financial statements include two types of statements that present different views of the district.

- The first two statements are government-wide financial statements that provide both short-term and long-term information about the district's overall financial status.
- The remaining statements are fund financial statements that focus on individual parts of the district, reporting the district's operations in more detail than the government-wide statements.
- The governmental funds statements tell how basic services, such as instruction and support services, were financed in the short-term as well as what remains for future spending.
- The fiduciary funds statement of assets and liabilities presents the financial position of an agency fund in which the district acts solely as a trustee or agent for the benefit of others.

The financial statements also include notes that explain some of the information in the statements and provide more detailed data. The statements are followed by a section of required supplementary

information that further explains and supports the financial statements with a comparison to the district's budget for the year.

Figure A-1 shows how the various parts of this annual report are arranged and related to one another.

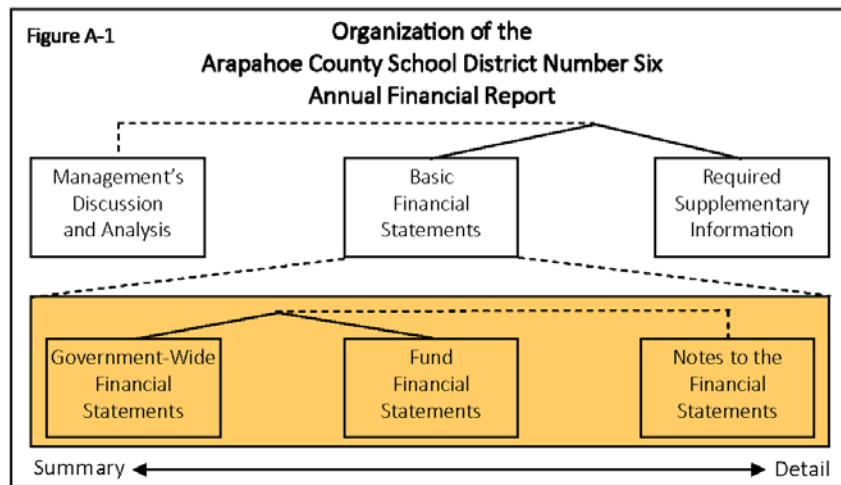


Figure A-2 summarizes the major features of the district's financial statements, including the portion of the district's activities they cover and the types of information they contain. The remainder of this overview section of management's discussion and analysis highlights the structure and contents of each of the statements.

Figure A-2
Major Features of the Districtwide and Fund Financial Statements

	Government-Wide Statements	Fund Financial Statements	
		Governmental Funds	Fiduciary Fund
Scope	Entire district (except the fiduciary fund)	The activities of the district which are not proprietary or fiduciary, such as instruction and support services	Instances in which the district administers resources on behalf of someone else, such as student clubs
Required Financial Statements	<ul style="list-style-type: none"> • Statement of net position • Statement of activities 	<ul style="list-style-type: none"> • Balance sheet • Statement of revenues, expenditures, and changes in fund balances 	<ul style="list-style-type: none"> • Statement of assets and liabilities
Accounting Basis and Measurement Focus	Accrual accounting and economic resources focus	Modified accrual accounting and current financial focus	Accrual accounting and economic resources focus
Type of Inflow/Outflow Information	All revenues and expenses during the year, regardless of when cash is received or paid	Revenues for which cash is received during or soon after the end of the year; expenditures when goods or services have been received and the related liability is due and payable	All additions and deductions during the year, regardless of when cash is received or paid

Government-Wide Financial Statements

The government-wide statements report information about the district as a whole using accounting methods similar to those used by private sector companies. The statement of net position includes all of the district's assets, deferred outflows of resources, liabilities, and deferred inflows of resources. All of the current year's revenues and expenses are accounted for in the statement of activities, regardless of when cash is received or paid.

The two government-wide statements report the district's net position and how it has changed. Net position—the difference between the district's assets, liabilities, and deferred outflows and inflows of resources—is one way to measure the district's financial health or position.

- Over time, increases or decreases in the district's net position are an indicator of whether its financial position is improving or deteriorating, respectively.
- To assess the district's overall health, additional nonfinancial factors may need to be considered, such as changes in the district's property tax base and the condition of school buildings and other facilities.

In the government-wide financial statements, the district's activities are divided into two categories:

- **Governmental activities:** Most of the district's basic services are included here, such as instruction and support services.
- **Component units:** The district's two charter schools have independent governing boards but are financially dependent on the district for most of their funding. Generally accepted accounting principles (GAAP) prescribe a discrete presentation of the component units—meaning separate presentation from the primary government.

Fund Financial Statements

The fund financial statements provide more detailed information about the district's funds, focusing on its most significant or "major" funds—not the district as a whole. Funds are accounting devices the district uses to keep track of specific sources of funding and spending on particular programs.

- Some funds are required by state law or GAAP.
- The district establishes other funds to control and manage money for particular purposes (i.e., athletics and activities funded largely by fees and ticket sales) or to show that it is properly using certain revenues, such as federal grants.

The district has two categories of funds:

- **Governmental funds:** Most of the district's basic services are included in governmental funds, which generally focus on how cash and other financial assets can readily be converted to cash flow in and out and the balances left at fiscal year-end that are available for spending. Consequently, the governmental fund statements provide a detailed, short-term view that helps determine whether there are more or fewer financial resources that can be spent in the near future to finance the district's programs.
- **Fiduciary fund:** The district is the trustee, or fiduciary, for the assets of student clubs. The district is responsible for ensuring that the assets reported in this fund are used only for intended purposes and used by those to whom the assets belong. The district excludes these activities from the government-wide financial statements because it cannot use these assets to finance its operations.

Financial Analysis of the District as a Whole

The district's net position of the governmental activities on June 30, 2016, decreased \$14.4 million to a negative \$223.5 million from what it was the previous year (see Figure A-3) primarily as a result of the impact of GASB Statement No. 68.

Assets, deferred outflows of resources, liabilities, and deferred inflows of resources changed from the prior year for the following reasons:

- Current and other assets decreased by \$21.2 million, primarily from decreased restricted cash and investments. The decrease is primarily from the project spending in the Capital Projects–Building Fund.
- Capital assets increased \$28.6 million, the net result of capital asset depreciation expense offset by asset additions, including construction in progress.
- Deferred outflows of resources for deferred charges on refunding decreased \$0.6 million due to amortization expense. Deferred outflows related to pension increased \$26.2 million due to an increase of \$0.9 million to the district's pension contribution subsequent to the measurement date, investment earnings, which were less than expected by \$21.0 million, and the difference between expected and actual actuarial experience of \$4.3 million.
- Current and other liabilities decreased \$4.1 million, mainly due to lower contracts payable in the Capital Project–Building Fund.
- The net pension liability increased \$33.8 million due to GASB Statement No. 68 to record a proportionate share of PERA's unfunded pension liability.
- Noncurrent liabilities increased \$11.4 million, the net result of issuing new bond debt, bond premium, and amortization expense.
- Deferred inflows of resources increased \$6.3 million for pension-related activities, of which \$4.6 million is the change in assumption. The balance of \$1.7 million includes the change in proportion and the differences between contributions recognized and the proportionate share of contributions.
- Net position decreased \$14.4 million. This change included a \$2.1 million decrease to net investment in capital assets (capital assets less related debt), a \$1.4 million increase in restricted net position, and a \$13.7 million decrease in unrestricted net position due to the adoption of GASB Statement No. 68.

Figure A-3 presents a two-year, condensed statement of the district's net position.

Figure A-3
Condensed Statement of Net Position (in millions of dollars)

	<u>Primary</u> <u>Government</u> <u>Governmental</u> <u>Activities</u>		<u>Total</u> <u>Dollars</u> <u>Change</u>
	<u>2015</u>	<u>2016</u>	<u>2015–2016</u>
Assets			
Current and other assets	\$ 125.2	\$ 104.0	\$ (21.2)
Capital assets	104.3	132.9	28.6
Total assets	<u>229.5</u>	<u>236.9</u>	<u>7.4</u>
Deferred outflows of resources			
Deferred charges on refunding	4.2	3.6	(0.6)
Deferred pension outflows	14.5	40.7	26.2
Total deferred outflows	<u>18.7</u>	<u>44.3</u>	<u>25.6</u>
Liabilities			
Current and other liabilities	20.6	16.5	(4.1)
Net pension liability	291.9	325.7	33.8
Noncurrent liabilities	143.0	154.4	11.4
Total liabilities	<u>455.5</u>	<u>496.6</u>	<u>41.1</u>
Deferred inflows of resources			
Deferred pension inflows	1.8	8.1	6.3
Total deferred inflows	<u>1.8</u>	<u>8.1</u>	<u>6.3</u>
Net position			
Net investment in capital assets	14.5	12.4	(2.1)
Restricted	14.4	15.8	1.4
Unrestricted	(238.0)	(251.7)	(13.7)
Total net position	<u>\$ (209.1)</u>	<u>\$ (223.5)</u>	<u>\$ (14.4)</u>

The district's change in financial position is related to operating results (see Figure A-4), which are highlighted as follows:

- Expenses of \$192.0 million exceeded revenues of \$177.6 million, resulting in the \$14.4 million decrease in net position. Total revenues increased \$6.7 million over revenues of the prior year and total expenses increased \$9.2 million, primarily due to the \$30.9 million of pension expense, net of the \$16.9 million employer contribution expenditures due to GASB Statement No. 68.
- The State of Colorado's General Assembly included an 11.7 percent negative per-pupil stabilization factor into the School Finance Act (SFA) for fiscal year 2015–2016. This negative factor was to help the state balance its budget due to the fiscal crisis. The district's per-pupil revenue was \$7,038, compared to \$7,985 without the negative factor. The SFA was supported by state equalization funds, local taxes, and property taxes in the fiscal year.
- The average funded student count, which is the per-pupil basis for fiscal year 2015–2016 SFA program funding, decreased slightly by 0.1 percent, or 14,785.0 from 14,799.8, the previous year.
- Total expenses of \$192.0 million represent a \$9.2 million, or 5.0 percent, increase compared to the prior year. Instructional expenses increased \$5.8 million, of which \$3.0 million represents the pension expense increase compared to 2014–2015 fiscal year. Support services expenses increased \$2.9 million, of which \$1.5 million represents the pension expense increase compared to 2014–2015 fiscal year. Interest expenses increased \$0.5 million.
- The Board of Education approved \$11.5 million of one-time spending from property tax collections in 2011 from the 2010 mill levy override election. During the 2015–2016 fiscal year, \$1.1 million was spent on technology, the implementation of new state standards, and new curriculum.

Figure A-4 presents a two-year summary of change in net position.

Figure A-4
Change in Net Position from Operating Results (in millions of dollars)

	Primary Government Governmental Activities		Total Percent Change 2015–2016
	2015	2016	
Revenues			
Program revenues			
Charges for services	\$ 11.6	\$ 11.9	2.6%
Operating grants/contributions	13.3	12.9	(3.0)%
Capital grants/contributions	0.5	0.1	(80.0)%
General revenues			
Property and S.O. taxes	78.2	86.9	11.1%
State equalization aid	64.8	63.0	(2.8)%
Interest and other revenues	2.5	2.8	12.0%
Total revenues	<u>170.9</u>	<u>177.6</u>	3.9%
Expenses			
Instruction	103.6	109.4	5.6%
Support services	74.1	77.0	3.9%
Interest	5.1	5.6	9.8%
Total expenses	<u>182.8</u>	<u>192.0</u>	5.0%
Change in net position	<u>(11.9)</u>	<u>(14.4)</u>	(21.0)%
Net position—beginning of year	<u>(197.2)</u>	<u>(209.1)</u>	
Net position—end of year	<u><u>\$(209.1)</u></u>	<u><u>\$(223.5)</u></u>	

Figure A-5
Sources of Revenue for Fiscal Year 2016

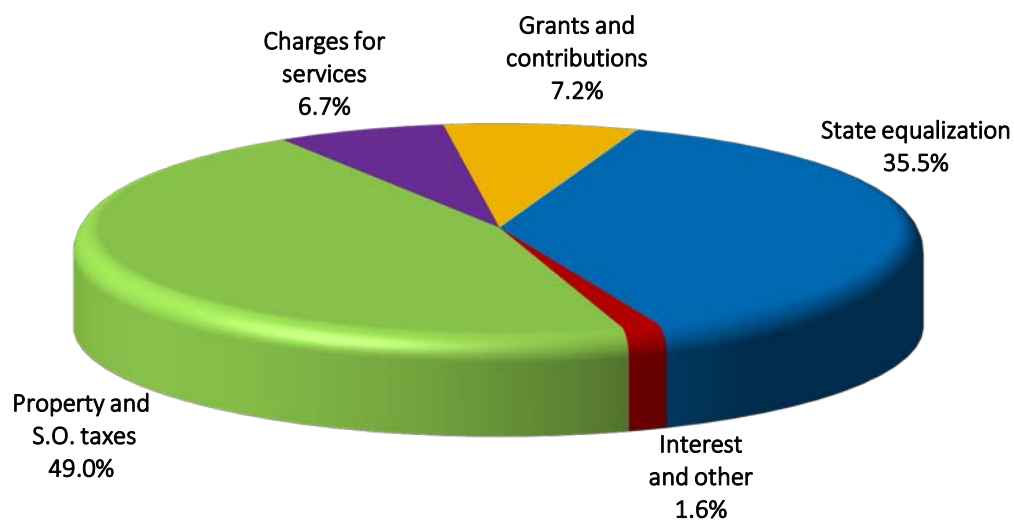
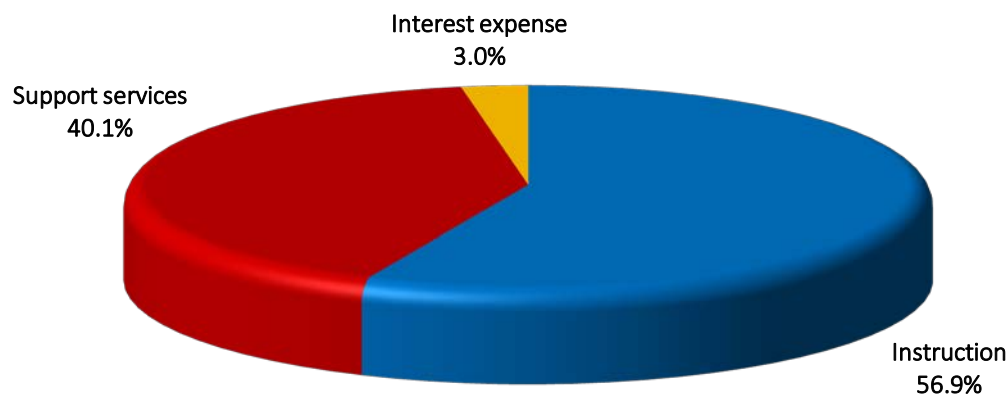


Figure A-6
Expenses for Fiscal Year 2016



Governmental Activities

Revenues increased \$6.7 million, or 3.9 percent, to \$177.6 million. Total expenses and transfers increased \$9.2 million to \$192.0 million as a result of the pension expense of \$30.9 million, net of the \$16.9 million employer contribution expenditures due to GASB Statement No. 68, salary and benefit increases, inflationary pressures, and one-time spending. Expenses exceeded revenues resulting in the \$14.4 million decrease in net position.

Figure A-7 summarizes the net cost of governmental activities, as presented in the statement of activities in the government-wide financial statements. The table also shows each activity's *net cost* (total cost less fees generated by the activities and other aid provided for specific programs). The net cost shows the financial burden placed on local and state taxpayers for each of the functions. Program revenues of \$24.9 million are a much smaller funding source for public school district governmental activities, representing only 14.0 percent of total revenues of \$177.6 million.

Figure A-7

Net Cost of Governmental Activities (in millions of dollars)

Function/Program	Total Cost of Services		Percent Change 2015–2016	Net Cost of Services		Percent Change 2015–2016
	2015	2016		2015	2016	
Instruction	103.6	\$ 109.4	5.6%	\$ 91.7	\$ 97.8	6.7%
Support services	74.1	77.0	3.9%	60.6	63.7	5.1%
Interest expense	5.1	5.6	9.8%	5.1	5.6	9.8%
Total	<u>\$ 182.8</u>	<u>\$ 192.0</u>	5.0%	<u>\$ 157.4</u>	<u>\$ 167.1</u>	6.2%

Other items of note about governmental activities from the statement of activities are as follows:

- The cost of all governmental activities for the year was \$192.0 million.
- Some of the cost was financed by the users of the programs, \$11.9 million.
- The federal and state governments, along with private donors, subsidized certain programs with operating grants of \$12.9 million. Capital contributions from corporate donors were \$0.1 million.
- Most of the net cost, \$167.1 million, was financed by state and local taxpayers with general revenues.
- Net cost of governmental services increased \$9.7 million, or 6.2 percent, from \$157.4 million in the previous year to \$167.1 million.
- General revenues total \$152.8 million, consisting of \$86.9 million in property and specific ownership taxes; \$63.0 million in state equalization aid; and \$2.8 million of interest earnings and other revenue.
- The resulting decrease in governmental activities net position was \$14.4 million.

Financial Analysis of the District's Governmental Funds

As noted earlier, the district uses fund accounting to ensure and demonstrate compliance with GAAP, the SFA, and other related legal requirements. The governmental funds provide information on near-term inflows, outflows, and balances of spendable resources. Such information is useful in assessing the district's financing requirements.

Fund Analysis

The General Fund, including the Risk Management sub-fund, is a major fund and is the most significant fund of the district. The Capital Projects Fund and the Student Athletic and Activities Fund are supported by the General Fund, with transfers out totaling \$4.2 million for the year. The Capital Projects–Building Fund is a capital improvement fund to account for the major capital outlays for district facilities supported by the voter-approved 2013 general obligation bonds. The Designated Purpose Grant Fund is supported by grant revenues and the Debt Service Fund by voter-approved property tax mill levies to meet general obligation debt service requirements. The Extended Day Care Fund is supported by tuition, while the Nutrition Services Fund received funding from federal grants along with sales of breakfast and lunch meals.

Total General Fund school finance program funding, which includes property taxes, specific ownership taxes, and state equalization for fiscal year 2015–2016, was impacted by the state's cost-of-living increase, a negative per-pupil stabilization factor of 11.7 percent, and stable enrollment.

- Overall, the General Fund reported revenue of \$147.3 million for fiscal year 2015–2016, which was \$3.9 million higher when compared to the previous year.
- Expenditures reported in the General Fund increased \$5.3 million to \$144.1 million for fiscal year 2015–2016. Net transfers to other funds decreased \$0.3 million when compared to the prior year. Increased expenditures included higher salaries and benefits, one-time spending of \$3.7 million, and overall inflationary pressures. The fund balance in the General Fund decreased \$0.9 million for fiscal year 2015–2016, primarily in the unassigned category.

District management intends to continue to balance the General Fund's current resources with budgeted expenditures in order to maintain an adequate fund balance. Administration, with Board approval, will continue to make the necessary long-term budgetary adjustments in order to achieve a continued healthy financial outlook.

General Fund Budget

Current General Fund expenditures, excluding the Risk Management sub-fund, totaling \$142.2 million were 95.0 percent of the final budget of \$149.7 million, compared to the 93.9 percent of the prior year. Budget carryovers are allowed by policy in various operating areas, and the carryovers primarily resulted in the changes of the final budget when compared to the original budget. The unspent expenditure budget at the end of the 2015–2016 year is mostly due to the under-spending of the final budget that will be rolled into the subsequent year. The district's contingency budget represents the majority of unspent appropriation and anticipated ending fund balance. The final budget reported a contingency reserve of \$25.9 million, which represents 14.7 percent of budgeted expenditures. Revenues of the General Fund amounted to 101.3 percent of budgeted revenues.

Capital Assets and Long-Term Debt

Capital Assets

As shown in Figure A-10, total primary government capital assets, net of depreciation, increased a net \$28.6 million to \$132.9 million from the previous year. This was the result of \$2.6 million of net depreciation expense, \$6.5 million of asset disposals, \$27.8 million of assets capitalization, and \$9.9 million of construction in progress. Assets additions consisted of land improvements, buildings, equipment, and vehicles.

Figure A-10
Capital Assets (net of depreciation, in millions of dollars)

	Total Primary Government Governmental Activities		Dollars Change
	2015	2016	2015–2016
	\$	\$	\$
Land	5.9	5.9	-
Land improvements	4.9	4.8	(0.1)
Buildings	73.8	92.5	18.7
Equipment	2.4	2.4	-
Vehicles	1.2	1.3	0.1
Construction in progress	16.1	26.0	9.9
Total	\$ 104.3	\$ 132.9	\$ 28.6

More detailed information about capital assets is presented in Note II, C. Capital Assets, of the financial statements.

Long-Term Debt

As of year-end, the district had \$154.6 million in general obligation bonds and other long-term debt outstanding, an increase of \$11.6 million, as shown in Figure A-11. The outstanding general obligation bonds at June 30, 2016, consisted of the 2010 general obligation refunding bonds of \$59.1 million, 2013 general obligation bonds of \$50.0 million, 2014 general obligation bonds of \$17.0 million, and 2015 general obligation bonds of \$15.6 million.

More detailed information about long-term liabilities is presented in Note II, E. Long-Term Debt, of the financial statements.

Figure A-11
Outstanding Long-Term Debt (in millions of dollars)

	Governmental Activities		Dollars Change	Credit Rating Moody's Underlying Rate
	2015	2016	2015–2016	
	\$	\$	\$	
General obligation (G.O.) bonds	131.5	141.7	10.2	Aa1
Premium on G.O. bonds	9.3	10.5	1.2	
Accrued interest	-	0.2	0.2	
Compensated absences	2.2	2.2	-	
Total	\$ 143.0	\$ 154.6	\$ 11.6	

Factors Bearing on the District's Future

At the time these financial statements were prepared and audited, the district contemplated the following factors that could significantly affect its financial health in the future.

- The state's General Assembly incorporated a statewide base per-pupil revenue (PPR) increase of 1.2 percent for inflation; however, the state set a negative factor of 11.7 percent for 2016–2017. This kept the statewide average total PPR at \$7,425, thus reducing the state share by \$830.7 million for a total reduction of approximately \$6.1 billion over the last seven years. The average statewide PPR funding without the negative factor funding cut would have been \$8,389, or \$964 more per student.
- Despite the state funding cuts, it is projected the district's per-pupil funding will increase \$1.5 million to \$105.3 million when compared to 2015–2016. However, full per-pupil funding would have equated to \$119.2 million, a loss of revenue to the district of \$13.9 million.
- The 2016–2017 budget includes one-time spending of \$3.4 million for student needs, technology upgrades, and Educator Effectiveness support. New recurring expenditures include salary and benefit increases and inflationary cost increases.
- The Board approved an \$11.5 million one-time spending plan from the 2010–2011 property taxes generated by mill levy override funds. Projects include the implementing the state's new instructional standards; updating the district's special education and library databases; updating the district's curriculum standards; and updating technology in the form of computers for students, staff, and labs. Of the \$2.5 million remaining, \$1.1 million is planned to be spent in fiscal year 2016–2017.
- Approximately \$22.9 million of the Capital Projects–Building Fund, used to account for the November 2013 voter-approved general obligation bond revenues, will be spent in 2016–2017. The district issued bonds totaling \$80 million, which resulted in \$5.7 million in premiums and \$2.6 million in coupons, making total bond proceeds \$88.3 million
- The Public Employees' Retirement Association (PERA) of Colorado is the pension plan that covers all district employees. PERA employer contribution rates will increase annually for the next two years, reaching a rate of 20.15 percent by 2018.
- Actual average funded counts of student enrollment are expected to decrease for 2016–2017. Although demographic information indicates student enrollment will continue to decline, it is beginning to stabilize into the foreseeable future.

Contacting the District's Financial Management

This financial report is designed to provide the district's citizens, taxpayers, customers, investors, and creditors with a general overview of the district's finances and to demonstrate the district's accountability for the money it receives and spends. If you have questions about this report or need additional financial information, please contact the Finance Office, Littleton Public Schools, 5776 South Crocker Street, Littleton, CO 80120. Additional information is available on the district website at www.littletonpublicschools.net.

Basic Financial Statements



This page left blank and
unnumbered intentionally
for presentation purposes



ARAPAHOE COUNTY SCHOOL DISTRICT NUMBER SIX

Statement of Net Position

June 30, 2016

	Primary Government	Component
	Governmental	Units
	Activities	Charter
		Schools
ASSETS		
Equity in pooled cash and investments	\$ 54,391,069	\$ 3,253,413
Restricted cash and investments	44,230,910	1,380,793
Taxes receivable—net	1,887,062	-
Due from other governments	2,611,423	-
Other accounts receivable	56,346	-
Inventories	338,501	-
Deposits	108,000	-
Prepaid items	383,282	-
Capital assets—net of accumulated depreciation where applicable:		
Land	5,857,507	1,889,806
Land improvements	4,803,668	157,202
Buildings and leasehold improvements	92,576,848	10,130,585
Equipment	2,390,478	20,177
Vehicles	1,269,631	-
Construction in progress	25,991,865	61,356
Total assets	<u>236,896,590</u>	<u>16,893,332</u>
DEFERRED OUTFLOWS OF RESOURCES		
Deferred charges on refunding	3,665,777	354,542
Deferred pension outflows	40,676,776	1,814,982
Total deferred outflows of resources	<u>44,342,553</u>	<u>2,169,524</u>
LIABILITIES		
Accounts and contracts payable	7,173,126	56,074
Accrued compensation	7,388,443	364,936
Accrued interest payable	648,180	115,848
Unearned revenue	1,278,796	24,975
Noncurrent liabilities:		
Due within one year	6,680,000	267,982
Due in more than one year	147,742,600	11,306,233
Net pension liability	325,722,592	14,493,192
Total liabilities	<u>496,633,737</u>	<u>26,629,240</u>
DEFERRED INFLOWS OF RESOURCES		
Deferred pension inflows	8,097,748	329,112
Total deferred inflows of resources	<u>8,097,748</u>	<u>329,112</u>
NET POSITION		
Net investment in capital assets	12,428,571	2,067,009
Restricted for:		
Debt service	10,206,182	191,472
Nutrition services	1,092,957	-
Emergency reserve under TABOR	4,490,000	263,300
Repair and replacement	-	260,000
Unrestricted	(251,710,052)	(10,677,277)
Total net position	<u>\$ (223,492,342)</u>	<u>\$ (7,895,496)</u>

See accompanying Notes to Basic Financial Statements.

ARAPAHOE COUNTY SCHOOL DISTRICT NUMBER SIX
Statement of Activities
For the Fiscal Year Ended June 30, 2016

Functions/Programs	Program Revenues			Net (Expenses) Revenue and Change in Net Position		
	Expenses	Charges for Services	Operating Grants and Contributions	Capital Grants and Contributions	Primary Government Activities	Component Units Charter Schools
Primary Government						
Governmental activities:						
Instruction	\$ 109,313,858	\$ 1,308,087	\$ 10,162,428	\$ -	\$ (97,843,343)	\$ -
Support services	77,014,745	10,585,801	2,724,523	8,000	(63,696,421)	-
Interest expense	5,637,212	-	-	-	(5,637,212)	-
Total primary government	\$ 191,965,815	\$ 11,893,888	\$ 12,886,951	\$ 8,000	\$ (167,176,976)	\$ -
Component Units—Charter Schools						
	\$ 9,193,247	\$ 561,964	\$ 133,233	\$ 257,250		\$ (8,240,800)
Property taxes:						
Property taxes—levied for general purposes					68,066,334	-
Property taxes—levied for debt service					12,871,720	-
Specific ownership taxes					6,049,245	-
Intergovernmental revenue, unrestricted:						
State equalization aid					62,961,971	7,004,003
District supplemental funding					-	737,508
Investment earnings					532,626	15,666
Other					2,307,380	223,177
Total general revenues					152,789,276	7,980,354
Change in net position					(14,387,700)	(260,446)
Net position—beginning					(209,104,642)	(7,635,050)
Net position—ending					\$ (223,492,342)	\$ (7,895,496)

See accompanying Notes to Basic Financial Statements.

ARAPAHOE COUNTY SCHOOL DISTRICT NUMBER SIX

**Balance Sheet
Governmental Funds
June 30, 2016**

	General Fund	Debt Service Fund	Capital Projects— Building Fund	Nonmajor Governmental Funds	Total Governmental Funds
ASSETS					
Equity in pooled cash and investments	\$ 46,028,377	\$ -	\$ -	\$ 8,362,692	\$ 54,391,069
Restricted investments	-	10,432,467	33,798,443	-	44,230,910
Taxes receivable from the county treasurer	1,219,096	122,311	-	-	1,341,407
Taxes receivable—net	1,586,928	300,134	-	-	1,887,062
Due from other governments	131,032	-	-	1,138,984	1,270,016
Other accounts receivable	56,346	-	-	-	56,346
Inventories	338,501	-	-	-	338,501
Deposits	108,000	-	-	-	108,000
Total assets	\$ 49,468,280	\$ 10,854,912	\$ 33,798,443	\$ 9,501,676	\$ 103,623,311
LIABILITIES AND FUND BALANCES					
Liabilities:					
Accounts and contracts payable	\$ 821,395	\$ 550	\$ 5,714,338	\$ 636,843	\$ 7,173,126
Accrued compensation	6,736,993	-	-	651,450	7,388,443
Other unearned revenue	210,223	-	-	1,068,573	1,278,796
Total liabilities	7,768,611	550	5,714,338	2,356,866	15,840,365
DEFERRED INFLOWS OF RESOURCES					
Deferred property tax revenue	1,586,928	300,134	-	-	1,887,062
Total deferred inflows	1,586,928	300,134	-	-	1,887,062
FUND BALANCES					
Nonspendable for:					
Inventories	338,501	-	-	-	338,501
Deposits	108,000	-	-	-	108,000
Restricted for:					
Emergency (TABOR)	4,490,000	-	-	-	4,490,000
Debt service	-	10,554,228	-	-	10,554,228
Nutrition services	-	-	-	1,092,957	1,092,957
Capital projects	-	-	28,084,105	-	28,084,105
Committed for:					
Risk management	1,278,391	-	-	-	1,278,391
Capital projects	-	-	-	3,205,810	3,205,810
Student care services	-	-	-	1,641,219	1,641,219
Pupil activities	-	-	-	1,159,052	1,159,052
Assigned for:					
Beverage sponsorship for student needs	-	-	-	45,772	45,772
Budget carryovers	5,867,295	-	-	-	5,867,295
One-time spending for student needs	2,504,405	-	-	-	2,504,405
Subsequent year expenditures	1,689,120	-	-	-	1,689,120
Unassigned	23,837,029	-	-	-	23,837,029
Total fund balances	40,112,741	10,554,228	28,084,105	7,144,810	85,895,884
Total liabilities, deferred inflows and fund balances	\$ 49,468,280	\$ 10,854,912	\$ 33,798,443	\$ 9,501,676	

Reconciliation of the Balance Sheet to the Statement of Net Position for Governmental Activities:

Capital assets used in governmental activities are not financial resources and, therefore, are not reported in the funds.	132,889,997
This amount of capital assets is net of accumulated depreciation.	383,282
Prepaid insurance premiums are not recorded in the fund financials statements because it is not an expense in the current year.	1,887,062
Other long-term assets are not available to pay for current year expenditures and, therefore, are unearned in the funds.	(293,143,564)
Pension liability activities including deferred pension outflows of \$40,676,776, net pension liability of (\$325,722,592) and deferred pension inflow of (\$8,097,748), are not due and payable in the current year and therefore not reported in the funds.	(150,756,823)
Long-term liabilities, including bonds payable and compensated absences of (\$154,422,600) and deferred charges on refunding of \$3,665,777, are not due and payable in the current period and therefore are not reported in the funds.	(648,180)
Interest payable on general obligation debt is not recorded on the fund financial statements because it is not a current use of cash.	
Interest is accrued and accreted on the government-wide statements since the liability is to be paid in the near term.	\$ (223,492,342)
Governmental activities net position	

See accompanying Notes to Basic Financial Statements.

ARAPAHOE COUNTY SCHOOL DISTRICT NUMBER SIX
Statement of Revenues, Expenditures, and Changes in Fund Balance
Governmental Funds
For the Fiscal Year Ended June 30, 2016

	General Fund	Debt Service Fund	Capital Projects— Building Fund	Nonmajor Governmental Funds	Total Governmental Funds
REVENUES					
Property taxes	\$ 67,509,040	\$ 12,753,459	\$ -	\$ -	\$ 80,262,499
Specific ownership taxes	6,049,245	-	-	-	6,049,245
Federal grants	1,028,308	-	-	5,371,289	6,399,597
State equalization aid	62,961,971	-	-	-	62,961,971
State education of students with disabilities	2,584,084	-	-	-	2,584,084
Other state entitlements and state grants	1,997,901	-	-	486,277	2,484,178
Food sales	-	-	-	2,013,244	2,013,244
Donated commodities	-	-	-	246,190	246,190
Student care	-	-	-	5,149,373	5,149,373
Pupil activities	-	-	-	2,178,587	2,178,587
Investment earnings	91,307	17,617	394,039	29,663	532,626
Other	5,169,695	-	11,089	852,183	6,032,967
Total revenues	<u>147,391,551</u>	<u>12,771,076</u>	<u>405,128</u>	<u>16,326,806</u>	<u>176,894,561</u>
EXPENDITURES					
Current:					
Instruction	90,120,564	-	-	2,385,327	92,505,891
Support services	53,795,759	-	-	14,695,998	68,491,757
Debt service:					
Principal retirement	-	5,475,000	-	-	5,475,000
Interest and fiscal charges	-	5,922,169	-	-	5,922,169
Bond issuance costs	-	-	152,621	-	152,621
Capital outlay	232,221	-	36,945,651	2,598,654	39,776,526
Total expenditures	<u>144,148,544</u>	<u>11,397,169</u>	<u>37,098,272</u>	<u>19,679,979</u>	<u>212,323,964</u>
EXCESS OF REVENUES OVER (UNDER)					
EXPENDITURES	<u>3,243,007</u>	<u>1,373,907</u>	<u>(36,693,144)</u>	<u>(3,353,173)</u>	<u>(35,429,403)</u>
OTHER FINANCING SOURCES (USES)					
Issuance of debt	-	-	15,626,195	-	15,626,195
Premium on bonds	-	-	2,262,339	-	2,262,339
Transfers in	199,094	-	-	4,247,438	4,446,532
Transfers out	(4,247,438)	-	-	(199,094)	(4,446,532)
Total other financing sources (uses)	<u>(4,048,344)</u>	<u>-</u>	<u>17,888,534</u>	<u>4,048,344</u>	<u>17,888,534</u>
NET CHANGE IN FUND BALANCES	<u>(805,337)</u>	<u>1,373,907</u>	<u>(18,804,610)</u>	<u>695,171</u>	<u>(17,540,869)</u>
FUND BALANCE—BEGINNING	<u>40,918,078</u>	<u>9,180,321</u>	<u>46,888,715</u>	<u>6,449,639</u>	<u>103,436,753</u>
FUND BALANCES—ENDING	<u>\$ 40,112,741</u>	<u>\$ 10,554,228</u>	<u>\$ 28,084,105</u>	<u>\$ 7,144,810</u>	<u>\$ 85,895,884</u>

See accompanying Notes to Basic Financial Statements.

ARAPAHOE COUNTY SCHOOL DISTRICT NUMBER SIX
Reconciliation of the Statement of Revenues,
Expenditures, and Changes in Fund Balance of Governmental Funds
to the Statement of Activities
For the Fiscal Year Ended June 30, 2016

Amounts reported for governmental activities in the statement of activities are different because:

Net change in fund balances—total governmental funds	\$ (17,540,869)
Governmental funds report capital outlay as expenditures. However, in the statement of activities, the cost of those assets is allocated over their estimated useful lives and reported as depreciation expense. This is the amount by which depreciation expense (\$8,494,982) and net book value of disposed assets (\$564,249) exceeds capital asset additions \$37,648,469 and contributed capital of \$8,000.	28,597,238
Revenues that do not provide current financial resources are deferred in the governmental fund financial statements but are recognized in the government-wide financial statements.	1,887,062
Unearned revenue of the prior year received in the current year is recognized in the prior year statement of activities and in the current year fund statements.	(1,211,508)
Increases to prepaid insurance premiums are expensed in the fund financial statements.	2,241
Repayments of bond principal \$5,475,000, reduce long-term liabilities in the statement of net position and do not affect the statement of activities.	5,475,000
Debt proceeds provide current financial resources to governmental funds, but issuing debt increases long-term liabilities in the statement of net assets and do not affect the statement of activities. This amount is the net effect of these differences in the treatment of long-term debt and related items: bond proceeds (\$15,626,195), bond premium (\$2,262,339), amortization of bond premium \$1,005,752, and amortization of deferred charge on refunding (\$523,682).	(17,406,464)
In the statement of activities, certain operating expenses such as compensated absences, are measured by the amounts earned during the year. In the governmental funds, however, expenditures for these items are measured by the amount of financial resources used (essentially the amounts actually paid). This is the amount by which benefits of \$1,345,449 exceeds usage of (\$1,287,047).	(58,402)
Net pension liability activities do not require the use of current financial resources and, therefore, are not reported as expenditures in the governmental funds. These activities consist of: pension expense (\$30,871,815), net of employer contribution expenditures of \$16,936,930.	(13,934,885)
Interest payable on general obligation debt is not recorded on the fund financial statements because it is not a current use of cash. Interest of \$648,180 is accrued and accreted on the government-wide statements since the liability is to be paid in the near term. The liability in the prior year was \$451,067, resulting in additional interest expense reported for the current year.	<u>(197,113)</u>
Change in net position of governmental activities	<u>\$ (14,387,700)</u>

See accompanying Notes to Basic Financial Statements.

ARAPAHOE COUNTY SCHOOL DISTRICT NUMBER SIX
Statement of Fiduciary Assets and Liabilities
Fiduciary Fund (Agency Fund)
June 30, 2016

ASSETS

Equity in pooled cash and investments	<u>\$ 406,436</u>
---------------------------------------	-------------------

LIABILITIES

Due to student clubs and other organizations	<u>\$ 406,436</u>
--	-------------------

See accompanying Notes to Basic Financial Statements.

ARAPAHOE COUNTY SCHOOL DISTRICT NUMBER SIX

Notes to Basic Financial Statements

June 30, 2016

I. SUMMARY OF SIGNIFICANT ACCOUNTING POLICIES

A. Reporting Entity

Arapahoe County School District Number Six (the district) is a political subdivision of the state of Colorado, and it is governed by an elected five-member Board of Education (the Board). The accompanying financial statements present the district, the primary government, and its component units, entities for which the district is considered financially accountable. The *discretely* presented component units are reported in a separate column in the government-wide financial statements (see note below for description) to emphasize that they are legally separate from the district.

Discretely Presented Component Units. The district's charter schools consist of two separately authorized charters—Littleton Academy and Littleton Preparatory. Charter schools are public schools authorized by the state of Colorado to provide alternatives for parents, pupils, and teachers. The charter schools are organized as legal entities, each with a separate governing board; however, the district must approve all charter school applications. Funding, as required by law, flows from the Colorado Department of Education through the district and to the charter schools on a monthly basis. The charter schools are *discretely* presented component units because of the significance of their financial relationship with the district and the services they provide to the district's students. Separate financial statements for each of the charter schools can be found at the following websites: www.academy.littletonpublicschools.net and www.littletonprep.littletonpublicschools.net.

B. Government-Wide and Fund Financial Statements

The government-wide financial statements (i.e., the statement of net position and the statement of activities) report information on all of the non-fiduciary activities of the primary government and its component units. Governmental activities are primarily supported by taxes and intergovernmental revenues. The primary government is reported separately from certain legally separate component units for which the primary government is financially accountable.

The statement of activities demonstrates the degree to which the direct expenses of a given function or segment is offset by program revenues. Direct expenses are those that are clearly identifiable with a specific function or program. Program revenues include: 1) charges for services that relate to a given function or program; and 2) grants and contributions that are restricted to meeting the operational or capital requirements of a particular function or program. Taxes and other items not properly included among program revenues are reported instead as general revenues.

Separate financial statements are provided for governmental funds and the fiduciary fund, even though the latter is excluded from the government-wide financial statements. Major individual governmental funds are reported as separate columns in the fund financial statements.

C. Measurement Focus, Basis of Accounting, and Financial Statement Presentation

The government-wide financial statements are reported using the economic resources measurement focus and the accrual basis of accounting. Revenues are recorded when earned, and expenses are recorded when a liability is incurred, regardless of the timing of related cash flows. Property taxes are recognized as revenues in the year for which they are levied. Grants and similar items are recognized as revenue as soon as all eligibility requirements imposed by the provider have been met. The fiduciary fund is reported using the accrual basis of accounting.

ARAPAHOE COUNTY SCHOOL DISTRICT NUMBER SIX

Notes to Basic Financial Statements

Governmental fund financial statements are reported using the current financial resources measurement focus and the modified accrual basis of accounting. Revenues are recognized as soon as they are both measurable and available. Revenues are considered to be available when they are collected within the current period or soon enough thereafter to pay liabilities of the current period. For this purpose, the district considers revenues to be available if they are collected within 30 days of the end of the current fiscal period or within 90 days for federal grants. Expenditures generally are recorded when a liability is incurred, as under accrual accounting. However, debt service expenditures, as well as expenditures related to compensated absences and claims and judgments, are recorded only when payment is due.

Property taxes, grants, and interest associated with the current fiscal period are all considered to be susceptible to accrual and have been recognized as revenues of the current fiscal period, provided the availability criteria has been met. All other revenue items are considered to be measurable and available only when cash is received by the district.

The district reports the following major governmental funds:

- The General Fund is the district's primary operating fund. It accounts for all financial resources of the general government, except those required to be accounted for in another fund.
- The Debt Service Fund accounts for dedicated revenue for the payments of principal and interest on long-term general obligation debt.
- The Capital Projects–Building Fund is a capital improvement fund to account for the major capital outlays for district facilities funded by the voter-approved 2013, 2014, and 2015 general obligation bonds.

Additionally, the district reports the following fund type:

- The Fiduciary Fund accounts for assets held by the district as an agent for student clubs and other organizations.

As a general rule, the effect of inter-fund activity has been eliminated from the government-wide financial statements. An exception to this general rule is that inter-fund services provided and used are not eliminated in order to avoid distortion of direct costs and program revenues.

Amounts reported as program revenues include charges for services and operating grants and contributions. Internally dedicated resources are reported as general revenues rather than as program revenues. Likewise, general revenues include all state formula aid and local property taxes.

When both restricted and unrestricted resources are available for use, it is the district's policy to use restricted resources first, then unrestricted resources as they are needed.

D. Assets, Liabilities, and Net Position or Equity

1. Deposits and Investments

In order to facilitate the recording of cash transactions and maximize earnings on investments, the district has combined the cash resources of its funds and maintains accountability for each fund's equity in the pooled cash and investments. Investments for the district, as well as for its component units, are reported at fair value.

2. Receivables

Property taxes levied in 2015 but not yet collected in 2016 are identified as property taxes receivable in the governmental funds balance sheet at June 30, 2016, and are presented net

ARAPAHOE COUNTY SCHOOL DISTRICT NUMBER SIX
Notes to Basic Financial Statements

of an allowance for uncollectible taxes. Intergovernmental receivables include amounts due from grantors for specific program grants.

3. Inventories, Deposits, and Prepaid Items

All inventories are valued at cost using the first-in/first-out (FIFO) method. Inventories are recorded as expenditures when consumed rather than when purchased. The district deposited an amount with an insurance provider which is termed deposits.

Expenditures for insurance and similar services extending over more than one accounting period are not allocated between or among accounting periods in the governmental funds and are instead accounted for as expenditures in the period of acquisition (purchase method).

4. Restricted Assets

As required by state law, a third party custodian administers the district’s Debt Service Fund. The trust department of a commercial bank serves as custodian, receiving property taxes collections directly from the county treasurer, investing money, and making debt service payments. The balance in the bank account is reported as a restricted investment.

5. Capital Assets

Capital assets, which include property and equipment, are reported in the applicable governmental column in the government-wide financial statements. Capital assets are defined by the district as assets with an initial individual cost of \$5,000 or more for government activities and an estimated useful life in excess of one year. Such assets are recorded at historical cost or estimated historical cost if purchased or constructed. Donated capital assets are recorded at estimated fair value at the date of donation.

Maintenance, repairs, and minor renovations are recorded as expenditures when incurred. Major additions and improvements are capitalized.

Property, plant, and equipment of the primary government, as well as the component units, are depreciated using the straight-line method over the following estimated useful lives:

<u>Assets</u>	<u>Years</u>
Land improvements	20
Buildings	20–50
Equipment	5–20
Vehicles	8–15

6. Compensated Absences

District policy allows unlimited accumulation of vacation leave and unused sick days. Accrued vacation is paid to eligible employees upon termination of employment, limited to two years accrual. Payment for unused sick days is made upon an employee’s retirement as defined by the district, for unused sick time over 45 days, and not exceeding annual contract days, times a factor approximating the daily pay rate of a substitute teacher. Each fund liquidates the accrued vacation and sick leave for its respective liabilities.

7. Deferred Outflows/Inflows of Resources

In addition to assets, the statement of net position will sometimes report a separate section for deferred outflows of resources. This separate financial statement element represents a consumption of net position that applies to a future period(s) and so will not be recognized as an outflow of resources (expense/expenditure) until then. One item that qualifies for

ARAPAHOE COUNTY SCHOOL DISTRICT NUMBER SIX

Notes to Basic Financial Statements

reporting in this category is the deferred charge on refunding reported in the government-wide statement of net position. A deferred charge on refunding results from the difference in the carrying value of refunded debt and its reacquisition price. This amount is deferred and amortized over the shorter of the life of the refunded or refunding debt. See Note III D for deferred pension outflows of resources.

In addition to liabilities, the district's financial statements will sometimes report a separate section for deferred inflows of resources. This separate financial statement element, deferred inflows of resources, represents an acquisition of net position that applies to a future period(s) and so will not be recognized as an inflow of resources (revenue) until that time. One type of item that qualifies for the reporting in this category is for property tax revenue, which is considered a deferred inflow of resources in the year the taxes are levied and measurable and are recognized as an inflow of resources in the period they are collected. See Note III D for deferred pension inflows of resources.

8. Long-Term Obligations

In the government-wide financial statements, long-term debt and other long-term obligations are reported as liabilities in the applicable governmental activities. Bond premiums are deferred and amortized over the life of the bonds using the straight-line method. Bonds payable are reported net of the applicable bond premium.

In the fund financial statements, governmental fund types recognize the face amount of debt issued as other financing sources. Premiums received on debt issuances are reported as other financing sources. Issuance costs are reported as debt service expenditures.

9. Property Taxes

Property taxes are levied by the Board. The levy is based on assessed valuations determined by the county assessor. The levy is set by December 15 by certification to the county commissioners to levy the individual properties as of January 1 of the following year. The county treasurer collects the determined taxes during the ensuing calendar year. The taxes are payable by April 30 or, if in equal installments, at the taxpayers' election on February 28 and June 15. Delinquent taxpayers are notified in August and tax sales of the liens on delinquent properties are held in November. The county treasurer remits taxes collected monthly to the district.

In the fund financial statements, property taxes are recorded initially as a receivable, net of allowance for doubtful collections and as a deferred inflow of resources in the year they represent an enforceable lien and are measurable. The deferred inflow of resources is recorded as revenue in the year they are available.

10. State Equalization Aid

State equalization aid is revenue received from the state of Colorado computed in accordance with a funding formula as defined by state statute. The funding formula considers such factors as pupil enrollment and other revenue sources.

11. Net Position/Fund Balance

In the government-wide financial statements, net position is restricted when constraints placed on the net position are externally imposed. In the fund financial statements, governmental funds report fund balances based on financial reporting standards that establish criteria for classifying fund balances into specifically defined classifications to make the nature and extent of constraints more useful and understandable. The classifications comprise a hierarchy based primarily on the extent to which the district is bound to honor

ARAPAHOE COUNTY SCHOOL DISTRICT NUMBER SIX

Notes to Basic Financial Statements

constraints on the specific purposes for which amounts in the funds can be spent. Fund balances may be classified as nonspendable, restricted, committed, assigned, or unassigned.

Nonspendable Fund Balance—amounts that cannot be spent because they are either not in spendable form or are legally or contractually required to be maintained intact, i.e., inventories and prepaids.

Restricted Fund Balance—amounts that are restricted to specific purposes. The spending constraints placed on the use of fund balance amounts are externally imposed by creditors, grantors, contributors, laws or regulations of other governments, or imposed by law through constitutional provisions or enabling legislation that are legally enforceable, i.e., Taxpayer's Bill of Rights (TABOR).

Committed Fund Balance—amounts that can only be used for specific purposes pursuant to constraints imposed by the Board by resolution. The committed amounts cannot be used for any other purpose unless the Board removes or changes the specified use by taking the same type of formal action it employed to previously commit those amounts.

Assigned Fund Balance—amounts that are constrained by the district's intent to be used for specific purposes, but are neither restricted nor committed. Per Board policy, the Board delegates authority to the superintendent, or the superintendent's designee, to assign fund balance.

Unassigned Fund Balance—the remaining fund balance, after amounts are set aside for other classifications. The Board assigns the superintendent or designee the responsibility of accumulating and maintaining a minimum General Fund unassigned fund balance of 5 percent of the district's adopted General Fund revenue budget of the current fiscal year.

The district has established a policy for its use of restricted and unrestricted fund balances. When expenditures are incurred, the district uses restricted fund balances first if the expenditure is for a restricted purpose. Unrestricted expenditures are applied to committed, assigned, and unassigned fund balances in that order.

E. Current Year GASB Statement Implementation

For the year ended June 30, 2016, the district adopted the provisions of GASB Statement No. 72, *Fair Value Measurement and Application*, which is effective for financial statement periods beginning after June 15, 2016. GASB Statement No.72 requires disclosures to be made about fair value measurements, the level of fair value hierarchy, and valuation techniques. See Note II A for fair value measurement.

ARAPAHOE COUNTY SCHOOL DISTRICT NUMBER SIX
Notes to Basic Financial Statements

II. DETAILED NOTES ON ALL FUNDS

A. Cash and Investments

Cash and investments as of June 30, 2016, consist of the following:

Cash on hand	\$ 26,667
Deposits with financial institutions	3,820,119
Investments	<u>98,435,042</u>
Total cash and investments	<u><u>\$102,281,828</u></u>

Cash and investments as of June 30, 2016, are classified in the accompanying financial statements as follows:

Statement of net position:	
Equity in pooled cash and investments, primary government	\$ 54,391,069
Restricted investments, primary government	44,230,910
Equity in pooled cash and investments, component units	3,253,413
Fiduciary Fund:	
Equity in pooled cash and investments	<u>406,436</u>
Total cash and investments	<u><u>\$102,281,828</u></u>

Deposits with Financial Institutions

The district's cash and deposit policies are approved by the Board of Education and governed by Colorado statutes. The Colorado Public Deposit Protection Act (PDPA) requires that all units of local government deposit cash in eligible public depositories; eligibility is determined by state regulations. Amounts on deposit in excess of federal insurance levels must be collateralized by eligible collateral as determined by the PDPA. PDPA allows the institution to create a single collateral pool for all public funds held. The pool is to be maintained by another institution, or held in trust for all the uninsured public deposits as a group. The market value of the collateral must be at least equal to 102.0 percent of the uninsured deposits.

Investments

Investment policies of the district and the component units, which comply with state statutes, permit investments in:

- U.S. Treasury obligations
- Federal instrumentality securities
- Repurchase agreements with a termination date of 180 days or less
- Time certificates of deposit
- Local government investment pools
- Money market mutual funds
- Commercial paper
- Municipal notes or bonds
- Any other investment which is authorized by state statutes

Investments as of June 30, 2016, consist of the following:

Investments	12 months or less	1 to 5 years	Total Investment
Local government investment pools	\$ 64,287,088	\$ -	\$ 64,287,088
U.S. Treasury	922,503	2,109,984	3,032,487
U.S. agencies	8,601,955	10,142,741	18,744,696
Corporate notes	6,013,760	2,585,435	8,599,195
Mutual fund	3,771,576	-	3,771,576
Total	<u>\$ 83,596,882</u>	<u>\$ 14,838,160</u>	<u><u>\$ 98,435,042</u></u>

ARAPAHOE COUNTY SCHOOL DISTRICT NUMBER SIX
Notes to Basic Financial Statements

Interest rate risk is the extent to which changes in interest rates will adversely affect the fair value of an investment. The district’s investment policy limits investment maturities to less than five years as a means of managing its exposure to interest rate risk.

<u>Investments</u>	<u>A1*</u>	<u>AA2*</u>	<u>AA3*</u>	<u>AAA*</u>	<u>AAAm**</u>	<u>Total</u>
Local government investment pools	\$ -	\$ -	\$ -	\$ -	\$ 64,287,088	\$ 64,287,088
U.S. Treasury	-	-	-	3,032,487	-	3,032,487
U.S. agencies	-	-	-	18,744,696	-	18,744,696
Corporate notes	2,005,140	874,541	3,717,134	2,002,380	-	8,599,195
Mutual fund	-	-	-	-	3,771,576	3,771,576
Total	<u>\$ 2,005,140</u>	<u>\$ 874,541</u>	<u>\$ 3,717,134</u>	<u>\$ 23,779,563</u>	<u>\$ 68,058,664</u>	<u>\$ 98,435,042</u>

*Moody Ratings

**Standard and Poor’s Rating

Credit risk is the risk that an issuer of an investment will not fulfill its obligation to the holder of the investment. State law limits investments for school districts to U.S. Treasury issues, other federally backed notes and credits, and other agency offerings without limitation. Other investment instruments, including bank obligations, general obligation bonds, and commercial paper, are limited to at least one of the highest rating categories of at least one nationally recognized rating agency. State law further limits investments in money market funds that are organized according to Federal Investment Company Act 1940, as specified in rule 2a-7, as amended, as long as such rule does not increase remaining maturities beyond a maximum of three years. Investments in these funds require that the institutions have assets in excess of \$1 billion or the highest credit rating from one or more of a nationally recognized rating agency.

Local government investment pool is an investment vehicle established for local government entities to pool surplus funds. The district is invested in two such pools: Colorado Local Government Liquid Asset Trust (COLOTRUST) and Colorado Surplus Asset Fund Trust (CSAFE). The Colorado Division of Securities administers and enforces the requirements of creating and operating COLOTRUST and CSAFE. Both operate in conformity with the Securities and Exchange Commission’s Rule 2a-7 as promulgated under the Investment Company Act of 1940, as amended. COLOTRUST and CSAFE are rated AAAM by Standard and Poor’s. Investments of COLOTRUST and CSAFE are limited to those allowed by state statutes. A designated custodial bank provides safekeeping and depository services in connection with the direct investment and withdrawal functions. The custodian’s internal records identify the investments owned by the participating governments. The district’s position in the pool is the same as the value of the pool shares.

Concentration of credit risk—State statutes generally do not limit the amount the district may invest in one issuer.

State statutes generally do not address custodial risk.

Fair value measurement—The district categorizes its fair value measurements within the fair value hierarchy established by generally accepted accounting principles. The hierarchy is based on the valuation inputs used to measure the fair value of the asset. Level 1 inputs are quoted prices in active markets for identical assets; Level 2 inputs are significant other observable inputs; Level 3 inputs are significant unobservable inputs.

ARAPAHOE COUNTY SCHOOL DISTRICT NUMBER SIX
Notes to Basic Financial Statements

The district has the following recurring fair value measurements as of June 30, 2016:

- U.S. Treasury securities of \$3.0 million are valued using quoted market prices (Level 1 inputs)
- U.S. agencies' securities of \$18.7 million are valued using quoted market prices (Level 1 inputs)
- Corporate notes of \$8.6 million are valued using quoted market prices (Level 1 inputs)

The district does not hold any investments which meet the definition of Level 2 and Level 3 inputs.

Component Units

The district's two charter schools' restricted investments at June 30, 2016, consist of the following:

Investments	Fair Value	Standard & Poor's Rating
Littleton Academy Charter School:		
COLOTRUST Plus+ Fund (government investment pool)	\$ 600,803	AAAm
Littleton Preparatory Charter School:		
Federated Prime Obligation Fund #700	779,990	AAAm
Total	<u>\$1,380,793</u>	

Interest rate risk is the extent to which changes in interest rates will adversely affect the fair value of an investment. The charter schools do not have a formal investment policy that limits investment maturities as a means of managing their exposure to fair value losses arising from increasing interest rates. State statutes generally limit the maturity of investment securities to five years from the date of purchase, unless the governing board authorized the investment for a period in excess of five years. The charter schools investments have a maturity of less than twelve months.

Credit risk for the charter schools is the same as the district's. The charter schools' investments as of June 30, 2016, were rated AAAM by Standard & Poor's.

Concentration of credit risk—State statutes generally do not limit the amount the charter schools may invest in one issuer.

B. Inter-Fund Receivables, Payables, and Transfers

Inter-fund transfers in/out for the fiscal year ended June 30, 2016, are shown below.

Transfers Out	Transfers In			Total
	General Fund	Nonmajor Funds		
		Student Athletic and Activities Fund	Capital Projects Fund	
General Fund	\$ -	\$1,814,403	\$2,433,035	\$ 4,247,438
Nonmajor Funds:				
Extended Day Care Program Fund	\$ 199,094	-	-	\$ 199,094

Annually, the district subsidizes the Student Athletic and Activities Fund and the Capital Projects Fund by a transfer from the General Fund. District policy requires annual transfers by the Extended Day Care Program Fund to the General Fund for overhead.

ARAPAHOE COUNTY SCHOOL DISTRICT NUMBER SIX
Notes to Basic Financial Statements

C. Capital Assets

Capital asset activity for the fiscal year ended June 30, 2016, is shown below.

	<u>Balance July 1, 2015</u>	<u>Increases</u>	<u>Decreases</u>	<u>Balance June 30, 2016</u>
Governmental activities:				
Capital assets not being depreciated:				
Land	\$ 5,857,507	\$ -	\$ -	\$ 5,857,507
Construction in progress	16,079,896	23,397,065	(13,485,096)	25,991,865
Total capital assets not being depreciated	<u>21,937,403</u>	<u>23,397,065</u>	<u>(13,485,096)</u>	<u>31,849,372</u>
Capital assets being depreciated:				
Land improvements	12,498,568	610,033	(198,959)	12,909,642
Buildings	215,462,460	26,190,803	(4,531,393)	237,121,870
Equipment	6,808,874	561,207	(1,229,671)	6,140,410
Vehicles	6,932,678	382,457	(495,642)	6,819,493
Total capital assets being depreciated	<u>241,702,580</u>	<u>27,744,500</u>	<u>(6,455,665)</u>	<u>262,991,415</u>
Less accumulated depreciation for:				
Land improvements	(7,617,188)	(676,968)	188,182	(8,105,974)
Buildings	(141,684,801)	(6,997,088)	4,136,867	(144,545,022)
Equipment	(4,360,161)	(460,496)	1,070,725	(3,749,932)
Vehicles	(5,685,074)	(360,430)	495,642	(5,549,862)
Total accumulated depreciation	<u>(159,347,224)</u>	<u>(8,494,982)</u>	<u>5,891,416</u>	<u>(161,950,790)</u>
Total capital assets being depreciated—net	<u>82,355,356</u>	<u>19,249,518</u>	<u>(564,249)</u>	<u>101,040,625</u>
Governmental activities capital assets—net	<u>\$ 104,292,759</u>	<u>\$ 42,646,583</u>	<u>\$(14,049,345)</u>	<u>\$132,889,997</u>

Depreciation expense was charged to functions/programs of the primary government as follows:

	<u>Governmental Activities</u>
Instruction	\$ 7,471,596
Support services	1,023,386
Total depreciation expense—governmental activities	<u>\$ 8,494,982</u>

ARAPAHOE COUNTY SCHOOL DISTRICT NUMBER SIX
Notes to Basic Financial Statements

	<u>Balance July 1, 2015</u>	<u>Increases</u>	<u>Decreases</u>	<u>Balance June 30, 2016</u>
Component units:				
Capital assets not being depreciated:				
Land	\$ 1,889,806	\$ -	\$ -	\$ 1,889,806
Construction in progress	25,194	61,356	(25,194)	61,356
Total capital assets not being depreciated	<u>1,915,000</u>	<u>61,356</u>	<u>(25,194)</u>	<u>1,951,162</u>
Capital assets being depreciated:				
Land improvements	286,101	-	-	286,101
Building and improvements	11,837,797	25,194	-	11,862,991
Equipment	58,451	8,694	(8,938)	58,207
Total capital assets being depreciated	<u>12,182,349</u>	<u>33,888</u>	<u>(8,938)</u>	<u>12,207,299</u>
Less accumulated depreciation for:				
Land improvements	(114,594)	(14,305)	-	(128,899)
Building and improvements	(1,444,017)	(288,389)	-	(1,732,406)
Equipment	(40,945)	(6,023)	8,938	(38,030)
Total accumulated depreciation	<u>(1,599,556)</u>	<u>(308,717)</u>	<u>8,938</u>	<u>(1,899,335)</u>
Total capital assets being depreciated—net	<u>10,582,793</u>	<u>(274,829)</u>	<u>-</u>	<u>10,307,964</u>
Component units capital assets—net	<u>\$ 12,497,793</u>	<u>\$ (213,473)</u>	<u>\$ (25,194)</u>	<u>\$ 12,259,126</u>

D. Accrued Compensation

Accrued compensation relates to salaries and benefits of certain contractually employed personnel, which are paid over a 12-month period from August to July, but are earned during a school year of approximately nine months. The salaries and benefits earned, but unpaid at June 30, 2016, are estimated to be \$7,388,443.

E. Long-Term Debt

General Obligation Bonds. The district has issued general obligation (G.O.) bonds to provide funds for major improvement projects to existing facilities. These bond issues were primarily for governmental activities. The amount of the 2010 G.O. bonds issued was \$80,575,000 of G.O. refunding bonds issued September 2010 to refund a portion of the outstanding G.O. bonds, Series 2002, on an advance refunding basis. The issued amounts of the 2013 G.O. bonds, the 2014 G.O. bonds, and the 2015 G.O. bonds are \$50,000,000; \$17,000,000; and \$12,998,580 (with additional 'B' interest certificates of \$2,627,615), respectively, as part of the November 2013 voter-approved \$80,000,000 capital improvement projects.

Premiums on bonds were received with the 2010 G.O. refunding bonds issue as additional proceeds of \$9,845,145; the 2013 G.O. bonds issue as additional proceeds of \$2,336,062; the 2014 general obligation bonds issue as additional proceeds of \$1,115,552; and the 2015 G.O. bonds issue as additional proceeds of \$2,262,339. For full accrual accounting purposes, the premium is combined with the debt and amortized over the life of the bonds.

G.O. bonds are direct obligations and pledge the full faith and credit of the district. General property taxes provide the revenue for payments of principal and interest on the bonds; voters in the district approved, in general elections, the increase in property taxes for the debt service costs. The bonds generally are issued as 20-year serial bonds with semi-annual payments of either principal, interest, or both. G.O. bonds outstanding at June 30, 2016, are shown on the next page.

ARAPAHOE COUNTY SCHOOL DISTRICT NUMBER SIX
Notes to Basic Financial Statements

<u>Bond Issue</u>	<u>Purpose</u>	<u>Interest Rates</u>	<u>Final Maturity</u>	<u>Amount Outstanding</u>
2010 G.O. refunding bonds	General government	1.75%–5.0%	Dec. 1, 2024	\$ 59,070,000
2013 G.O. bonds	General government	4.5%–5.0%	Dec. 1, 2037	\$ 50,000,000
2014 G.O. bonds	General government	3.0%–4.0%	Dec. 1, 2038	\$ 17,000,000
2015 G.O. bonds	General government	2.9%–5.0%	Dec. 1, 2038	\$ 15,626,195

Annual debt service requirements to maturity for G.O. bonds are as follows:

<u>Fiscal Year Ending</u>	<u>General Obligation Bonds</u>			
	<u>June 30</u>	<u>Principal</u>	<u>Interest</u>	<u>Total</u>
2017	\$ 5,680,000	\$ 5,919,475	\$ 11,599,475	
2018	5,860,000	5,738,400	11,598,400	
2019	6,045,000	5,554,450	11,599,450	
2020	6,230,000	5,375,713	11,605,713	
2021	6,400,000	5,144,050	11,544,050	
2022–2026	34,292,615	21,650,109	55,942,724	
2027–2031	24,415,000	15,093,425	39,508,425	
2032–2036	32,775,000	8,176,125	40,951,125	
2037–2039	19,998,580	4,757,420	24,756,000	
Totals	<u>\$141,696,195</u>	<u>\$ 77,409,167</u>	<u>\$ 219,105,362</u>	

Changes in Long-Term Debt. The changes in long-term liabilities for the primary government for the fiscal year ended June 30, 2016, were as follows:

	<u>Balance</u>			<u>Balance</u>	<u>Due Within</u>
	<u>July 1, 2015</u>	<u>Additions</u>	<u>Reductions</u>	<u>June 30, 2016</u>	<u>One Year</u>
Governmental activities:					
G.O. bonds payable	\$ 131,545,000	\$ 15,626,195	\$ (5,475,000)	\$ 141,696,195	\$ 5,680,000
Premium on bonds	9,258,526	2,262,339	(1,005,752)	10,515,113	-
Accreted interest on bonds	-	172,004	-	172,004	-
Compensated absences	2,152,890	1,345,449	(1,287,047)	2,211,292	1,000,000
Totals	<u>\$ 142,956,416</u>	<u>\$ 19,405,987</u>	<u>\$ (7,767,799)</u>	<u>\$ 154,594,604</u>	<u>\$ 6,680,000</u>

Payment of general obligation bonds debt service, including bonds principal, is made from the Debt Service Fund. The General Fund typically liquidates compensated absences.

Component Unit Mortgage Loan. On December 19, 2006, the Colorado Educational and Cultural Facilities Authority (CECFA) issued \$5,235,000 of Charter School Revenue Refunding Bonds, Series 2006, to advance refund CECFA's outstanding Series 2001 Bonds on behalf of Littleton Academy Building Foundation (Foundation). Proceeds of the Series 2001 Bonds were used by the Foundation to acquire and remodel the school building for Littleton Academy Charter School.

Littleton Academy Charter School is obligated under a lease agreement to make monthly lease payments to the Foundation for using the building. The Foundation is required to make semi-annual loan payments to the trustee for payment of the bonds. Bond interest payments are due semi-annually on January 15 and July 15, with interest accruing at rates ranging from 3.75 percent to 4.38 percent. Principal payments are due annually on January 15 through 2036.

ARAPAHOE COUNTY SCHOOL DISTRICT NUMBER SIX
Notes to Basic Financial Statements

Annual debt service requirements to maturity for the mortgage loan are as follows:

Fiscal Year Ending June 30	Mortgage Loan		
	Principal	Interest	Total
2017	\$ 145,000	\$ 187,985	\$ 332,985
2018	150,000	181,823	331,823
2019	155,000	175,823	330,823
2020	160,000	169,623	329,623
2021	170,000	163,223	333,223
2022–2026	950,000	701,303	1,651,303
2027–2031	1,175,000	476,875	1,651,875
2032–2036	1,455,000	196,437	1,651,437
Totals	\$ 4,360,000	\$ 2,253,092	\$ 6,613,092

In January 2013, Littleton Preparatory Charter School Building Corporation (Corporation) borrowed \$7.34 million to acquire and remodel a building for the Littleton Preparatory Charter School. The loan was obtained through a mortgage loan agreement with CECFA, which sold \$7.34 million of Charter School Revenue Bonds, Series 2013, on behalf of the Corporation.

The Corporation and CECFA entered into a mortgage loan agreement. Littleton Preparatory Charter School is obligated under a lease agreement to make monthly lease payments to the Corporation for use of the building. The Corporation is required to make semi-annual loan payments to the trustee for payment of the bonds. Bond interest payments are due semi-annually on June 1 and December 1, with interest accruing at 5.0 percent. Principal payments are due annually on December 1, beginning in 2014 through 2042.

Annual debt service requirements to maturity for the mortgage loan are as follows:

Fiscal Year Ending June 30	Mortgage Loan		
	Principal	Interest	Total
2017	\$ 120,000	\$ 353,250	\$ 473,250
2018	125,000	347,125	472,125
2019	135,000	340,625	475,625
2020	140,000	333,750	473,750
2021	145,000	326,625	471,625
2022–2026	855,000	1,512,625	2,367,625
2027–2031	1,100,000	1,268,750	2,368,750
2032–2036	1,395,000	958,125	2,353,125
2037–2041	1,780,000	563,750	2,343,750
2042–2043	1,330,000	79,250	1,409,250
Totals	\$ 7,125,000	\$ 6,083,875	\$ 13,208,875

ARAPAHOE COUNTY SCHOOL DISTRICT NUMBER SIX
Notes to Basic Financial Statements

Component Unit Changes in Long-Term Debt. The changes in long-term debt for Littleton Academy Charter School for the fiscal year ended June 30, 2016, were as follows:

	<u>Balance</u> <u>July 1, 2015</u>	<u>Additions</u>	<u>Reductions</u>	<u>Balance</u> <u>June 30, 2016</u>	<u>Due Within</u> <u>One Year</u>
Mortgage loan payable	\$ 4,500,000	\$ -	\$ 140,000	\$ 4,360,000	\$ 145,000
Discount on loan	(44,795)	-	(2,092)	(42,703)	(2,092)
Totals	<u>\$ 4,455,205</u>	<u>\$ -</u>	<u>\$ 137,908</u>	<u>\$ 4,317,297</u>	<u>\$ 142,908</u>

The changes in long-term debt for Littleton Preparatory Charter School for the fiscal year ended June 30, 2016, were as follows:

	<u>Balance</u> <u>July 1, 2015</u>	<u>Additions</u>	<u>Reductions</u>	<u>Balance</u> <u>June 30, 2016</u>	<u>Due Within</u> <u>One Year</u>
Mortgage loan payable	\$ 7,240,000	\$ -	\$ 115,000	\$ 7,125,000	\$ 120,000
Premium on loan	136,992	-	5,074	131,918	5,074
Totals	<u>\$ 7,376,992</u>	<u>\$ -</u>	<u>\$ 105,074</u>	<u>\$ 7,256,918</u>	<u>\$ 125,074</u>

III. OTHER INFORMATION

A. Risk Management

The district is exposed to various risks of loss related to torts; theft of, damage to, and destruction of assets; errors and omissions; injuries to employees; and natural disasters.

Liability and property. The district has a self-insured retention on its general liability and auto claims up to \$150,000 per occurrence. For claims in excess of \$150,000 up to \$5,000,000, the district is a member of the Excess-of-Loss Self-Insurance Pool (ELSIP), a public entity risk pool. ELSIP operates risk management and insurance programs for three participating member school districts. The district pays an annual premium for its coverage. ELSIP may require additional contributions if it determines the financial condition, including cash flow availability, so necessitates additional contributions. Both charter schools participate with the district for this coverage. The district self-insures the first \$25,000 for each property claim and insures through Travelers additional losses up to approximately \$353.4 million.

Employee health care. All employee health care benefit plans of the district and the component units are commercially insured, except for a dental plan with maximum benefit costs limited to \$2,000 per year per participant.

Workers' compensation. In 1986, the district joined with other school districts in the state of Colorado to form the Joint School Districts' Workers' Compensation Self-Insurance Pool (Joint Pool), a public entity risk pool currently operating as a common risk management and insurance program with four participating members. The district pays an annual premium to the Joint Pool for its workers' compensation coverage. The Joint Pool may require additional contributions if it determines the financial condition, including cash flow availability, so necessitates additional contributions. Each member of the Joint Pool is responsible for \$100,000 of each loss. Losses between \$100,000 and \$450,000 are pooled between the member districts, and losses in excess of \$450,000 are reinsured for up to statutory limits. The component units participate with the district in the Joint Pool.

Claims liability. A claims liability is reported when it is probable that a loss has occurred and the amount of loss can be reasonably estimated. The liability is estimated based upon the experience of the district and trends in costs of services. Estimates are revised by management as changes in

ARAPAHOE COUNTY SCHOOL DISTRICT NUMBER SIX
Notes to Basic Financial Statements

these factors occur, and such revisions are reflected in operations of the current period. Liabilities include an amount for claims that have been incurred but not reported.

The following represents the changes in the claims liability for the district during the fiscal years ended June 30, 2015, and 2016.

	Dental	
	2015	2016
Claims liability at beginning of year	\$ 35,800	\$ 57,192
Current year claims and changes in estimates	899,664	999,295
Claim payments	(878,272)	(1,013,650)
Claims liability at end-of-year	\$ 57,192	\$ 42,837

The district maintains commercial insurance coverage for other casualty coverages. Settled claims have not exceeded this commercial coverage in any of the past three fiscal years. There have been no significant changes in insurance coverage in fiscal year 2016 as compared to prior years.

B. Contingent Liabilities

Amounts received or receivable from grant agencies are subject to audit and adjustment by grantor agencies, principally the federal government. Any disallowed claims, including amounts already collected, may constitute a liability of the applicable funds. The amount, if any, of expenditures that may be disallowed by the grantor cannot be determined at this time, although the district expects such amounts, if any, to be immaterial.

The district is a defendant in various lawsuits. Although the outcome of these lawsuits is not presently determinable, in the opinion of the district's counsel, the resolution of these matters will not have a material adverse effect on the financial condition of the district.

C. Constitutional TABOR Amendment

In the November 1992 general election, Colorado voters approved an amendment to the Colorado Constitution, commonly known as TABOR. This amendment limits the ability of the state and local governments, such as the district, to increase revenues, debt, and spending. In addition, TABOR requires that the state and local governments obtain voter approval to create any multiple fiscal year direct or indirect debt or other financial obligations without adequate present cash reserves pledged irrevocably and held for payments in all future fiscal years.

In the November 1998 general election, the district's electorate authorized the district to collect, retain, and expend all revenues and other funds collected during fiscal year 1999 and each subsequent year from any source, notwithstanding the TABOR limitations. The district remains subject to TABOR with respect to general mill levy increase restrictions and to the issuance of any new debt without taxpayers' approval. The TABOR amendment is subject to many interpretations, but the district believes it is in compliance. TABOR requires that an emergency reserve be established. Net position and fund balances of \$4,490,000 have been restricted for this emergency reserve at June 30, 2016.

D. Public Employees' Retirement Association of Colorado (PERA)

Summary of Significant Accounting Policies

The district and its two charter schools, Littleton Academy and Littleton Preparatory, participate in the School Division Trust Fund (SCHDTF), a cost-sharing, multiple-employer defined benefit pension fund administered by the Public Employees' Retirement Association of Colorado (PERA).

ARAPAHOE COUNTY SCHOOL DISTRICT NUMBER SIX

Notes to Basic Financial Statements

The net pension liability, deferred outflows of resources and deferred inflows of resources related to pensions, pension expense, information about the fiduciary net position and additions to/deductions from the fiduciary net position of the SCHDTF have been determined using the economic resources measurement focus and the accrual basis of accounting. For this purpose, benefit payments (including refunds of employee contributions) are recognized when due and payable in accordance with the benefit terms. Investments are reported at fair value.

General Information about the Pension Plan

Plan description. Eligible employees of the district, Littleton Academy, and Littleton Preparatory are provided with pensions through the School Division Trust Fund (SCHDTF)—a cost-sharing, multiple-employer defined benefit pension plan administered by PERA. Plan benefits are specified in Title 24, Article 51 of the Colorado Revised Statutes (C.R.S.), administrative rules set forth at 8 C.C.R. 1502-1, and applicable provisions of the Federal Internal Revenue Code. Colorado state law provisions may be amended from time to time by the Colorado General Assembly. PERA issues a publicly available comprehensive annual financial report that can be obtained at www.copera.org/investments/pera-financial-reports.

Benefits provided. PERA provides retirement, disability, and survivor benefits. Retirement benefits are determined by the amount of service credit earned and/or purchased, highest average salary, the benefit structure(s) under which the member retires, the benefit option selected at retirement, and age at retirement. Retirement eligibility is specified in tables set forth at C.R.S. § 24-51-602, 604, 1713, and 1714.

The lifetime retirement benefit for all eligible retiring employees under the PERA Benefit Structure is the greater of the:

- Highest average salary multiplied by 2.5 percent and then multiplied by years of service credit
- The value of the retiring employee's member contribution account plus a 100 percent match on eligible amounts as of the retirement date. This amount is then annuitized into a monthly benefit based on life expectancy and other actuarial factors.

In all cases, the service retirement benefit is limited to 100 percent of highest average salary and also cannot exceed the maximum benefit allowed by Federal Internal Revenue Code.

Members may elect to withdraw their member contribution accounts upon termination of employment with all PERA employers, thereby waiving rights to any lifetime retirement benefits earned. If eligible, the member may receive a match of either 50 percent or 100 percent on eligible amounts depending on when contributions were remitted to PERA, the date employment was terminated, whether 5 years of service credit has been obtained, and the benefit structure under which contributions were made.

Benefit recipients who elect to receive a lifetime retirement benefit are generally eligible to receive post-retirement cost-of-living adjustments, referred to as annual increases in the C.R.S. Benefit recipients under the PERA benefit structure who began eligible employment before January 1, 2007, and all benefit recipients of the DPS benefit structure receive an annual increase of 2 percent, unless PERA has a negative investment year, in which case the annual increase for the next three years is the lesser of 2 percent or the average of the Consumer Price Index for Urban Wage Earners and Clerical Workers (CPI-W) for the prior calendar year. Benefit recipients under the PERA benefit structure who began eligible employment after January 1, 2007, receive an annual increase of the lesser of 2 percent or the average CPI-W for the prior calendar year, not to exceed 10 percent of PERA's Annual Increase Reserve (AIR) for the SCHDTF.

ARAPAHOE COUNTY SCHOOL DISTRICT NUMBER SIX
Notes to Basic Financial Statements

Disability benefits are available for eligible employees once they reach five years of earned service credit and are determined to meet the definition of disability. The disability benefit amount is based on the retirement benefit formula shown above considering a minimum 20 years of service credit, if deemed disabled.

Survivor benefits are determined by several factors, which include the amount of earned service credit, highest average salary of the deceased, the benefit structure(s) under which service credit was obtained, and the qualified survivor(s) who will receive the benefits.

Contributions. Eligible employees and the district, Littleton Academy, and Littleton Preparatory are required to contribute to the SCHDTF at a rate set by Colorado statute. The contribution requirements are established under C.R.S. § 24-51-401, et seq. Eligible employees are required to contribute 8.0 percent of their PERA-includable salary. The employer contribution requirements are summarized in the table below:

	<u>For the Year Ended December 31, 2015</u>	<u>For the Year Ended December 31, 2016</u>
Employer Contribution Rate*	10.15%	10.15%
Amount of Employer Contribution apportioned to the Health Care Trust Fund as specified in C.R.S. § 24-51-208(1)(f) *	(1.02)%	(1.02)%
Amount Apportioned to the SCHDTF*	9.13%	9.13%
Amortization Equalization Disbursement (AED) as specified in C.R.S. § 24-51-411 *	4.20%	4.50%
Supplemental Amortization Equalization Disbursement (SAED) as specified in C.R.S. § 24-51-411 *	4.00%	4.50%
Total Employer Contribution Rate to the SCHDTF*	<u>17.33%</u>	<u>18.13%</u>

*Rates are expressed as a percentage of salary as defined in C.R.S. § 24-51-101(42).

Employer contributions are recognized by the SCHDTF in the period in which the compensation becomes payable to the member and the district is statutorily committed to pay the contributions to the SCHDTF. Employer contributions recognized by the SCHDTF from the district, Littleton Academy, and Littleton Preparatory were \$16,843,161; \$303,083; and \$435,056; respectively, for the year ended June 30, 2016.

Pension Liabilities, Pension Expense, and Deferred Outflows of Resources and Deferred Inflows of Resources Related to Pensions

At June 30, 2016, the district, Littleton Academy, and Littleton Preparatory reported a liability of \$325,722,592; \$5,885,733; and \$8,607,459; respectively, for their proportionate shares of the net pension liability. The net pension liability was measured as of December 31, 2015, and the total pension liability used to calculate the net pension liability was determined by an actuarial valuation as of December 31, 2014. Standard update procedures were used to roll forward the total pension liability to December 31, 2015. The proportion of the net pension liability was based on the district's, Littleton Academy's, and Littleton Preparatory's contributions to the SCHDTF for the calendar year 2015, relative to the total contributions of participating employers to the SCHDTF.

ARAPAHOE COUNTY SCHOOL DISTRICT NUMBER SIX
Notes to Basic Financial Statements

At December 31, 2015, the district's and its two charter schools' proportion was 2.224 percent, which was a decrease of 0.025 percent from its proportion measured as of December 31, 2014.

For the year ended June 30, 2016, the district, Littleton Academy, and Littleton Preparatory recognized pension expense of \$30,871,815; \$557,847; and \$815,810; respectively. At June 30, 2016, the district, Littleton Academy, and Littleton Preparatory reported deferred outflows of resources and deferred inflows of resources related to pensions from the following sources:

	District		Littleton Academy		Littleton Preparatory	
	Deferred Outflows of Resources	Deferred Inflows of Resources	Deferred Outflows of Resources	Deferred Inflows of Resources	Deferred Outflows of Resources	Deferred Inflows of Resources
Difference between expected and actual experience	\$ 4,301,204	\$ 13,722	\$ 77,722	\$ 252	\$ 113,662	\$ 356
Changes of assumptions or other inputs	-	\$4,603,038	-	\$ 83,176	-	\$121,639
Net difference between projected and actual earnings on pension plan investments	\$27,751,424	-	\$502,851	-	\$ 731,231	-
Changes in proportion and differences between contributions recognized and proportionate share of contributions	-	\$3,480,988	-	\$123,689	\$ 836	-
Contributions subsequent to the measurement date	\$ 8,624,148	-	\$158,958	-	\$ 229,722	-
Total	\$40,676,776	\$8,097,748	\$739,531	\$207,117	\$1,075,451	\$121,995

\$8,624,148; \$158,958; and \$229,722 from the district, Littleton Academy, and Littleton Preparatory, respectively, is reported as deferred outflows of resources related to pensions, resulting from contributions subsequent to the measurement date, will be recognized as a reduction of the net pension liability in the year ended June 30, 2017. Other amounts reported as deferred outflows of resources and deferred inflows of resources related to pensions will be recognized in pension expense as follows.

Year Ended:	District	Littleton Academy	Littleton Preparatory
2017	\$ 5,679,620	\$ 79,953	\$184,716
2018	5,881,534	83,643	189,988
2019	6,714,344	107,028	199,266
2020	<u>5,679,382</u>	<u>102,832</u>	<u>149,764</u>
Total	<u>\$23,954,880</u>	<u>\$373,456</u>	<u>\$723,734</u>

ARAPAHOE COUNTY SCHOOL DISTRICT NUMBER SIX

Notes to Basic Financial Statements

Actuarial assumptions. The total pension liability in the December 31, 2014, actuarial valuation was determined using the actuarial cost method, actuarial assumptions, and other inputs shown on the following page.

Actuarial cost method	Entry age
Price inflation	2.80 percent
Real wage growth	1.10 percent
Wage inflation	3.90 percent
Salary increases—including wage inflation	3.90–10.10 percent
Long-term investment Rate of Return, net of pension plan investment expenses, including price inflation	7.50 percent
Future post-retirement benefit increases: PERA Benefit Structure hired prior to 1/1/07	2.00 percent
PERA Benefit Structure hired after 12/31/06 (ad hoc, substantively automatic)	Financed by the Annual Increase Reserve

Mortality rates were based on the RP-2000 Combined Mortality Table for Males or Females, as appropriate, with adjustments for mortality improvements based on a projection of Scale AA to 2020 with males set back one year and females set back two years.

The actuarial assumptions used in the December 31, 2014, valuation were based on the results of an actuarial experience study for the period January 1, 2008, through December 31, 2011, adopted by PERA’s Board on November 13, 2012, and an economic assumption study, adopted by PERA’s Board on November 15, 2013, and January 17, 2014.

Changes to assumptions or other inputs since the December 31, 2013, actuarial valuation are as follows:

- The following programming changes were made:
 - Valuation of the full survivor benefit without any reduction for possible remarriage.
 - Reflection of the employer match on separation benefits for all eligible years.
 - Reflection of one year of service eligibility for survivor annuity benefit.
 - Refinement of the 18 month annual increase timing.
 - Refinements to directly value certain and life, modified cash refund, and pop-up benefit forms.

- The following methodology changes were made:
 - Recognition of merit salary increases in the first projection year.
 - Elimination of the assumption that 35 percent of future disabled members elect to receive a refund.
 - Removal of the negative value adjustment for liabilities associated with refunds of future terminating members.
 - Adjustments to the timing of the normal cost and unfunded actuarial accrued liability payment calculations to reflect contributions throughout the year.

The SCHDTF’s long-term expected rate of return on pension plan investments was determined using a log-normal distribution analysis in which best estimate ranges of expected future real rates of return (expected return, net of investment expense and inflation) were developed for each major asset class. These ranges were combined to produce the long-term expected rate of

ARAPAHOE COUNTY SCHOOL DISTRICT NUMBER SIX
Notes to Basic Financial Statements

return by weighting the expected future real rates of return by the target asset allocation percentage and then adding expected inflation.

As of the November 15, 2013, adoption of the long-term expected rate of return by the PERA Board, the target allocation and best estimates of geometric real rates of return for each major asset class are summarized in the following table:

<u>Asset Class</u>	<u>Target Allocation</u>	<u>10 Year Expected Geometric Real Rate of Return</u>
U.S. Equity—Large Cap	26.76%	5.00%
U.S. Equity—Small Cap	4.40%	5.19%
Non U.S. Equity—Developed	22.06%	5.29%
Non U.S. Equity—Emerging	6.24%	6.76%
Core Fixed Income	24.05%	0.98%
High Yield	1.53%	2.64%
Long Duration Gov't/Credit	0.53%	1.57%
Emerging Market Bonds	0.43%	3.04%
Real Estate	7.00%	5.09%
Private Equity	7.00%	7.15%
Total	<u>100.00%</u>	

*In setting the long-term expected rate of return, projections employed to model future returns provide a range of expected long-term returns that, including expected inflation, ultimately support a long-term expected rate of return assumption of 7.50 percent.

Discount rate. The discount rate used to measure the total pension liability was 7.50 percent. The projection of cash flows used to determine the discount rate applied the actuarial cost method and assumptions shown above. In addition, the following methods and assumptions were used in the projection of cash flows:

- Total covered payroll for the initial projection year consists of the covered payroll of the active membership present on the valuation date and the covered payroll of future plan members assumed to be hired during the year. In subsequent projection years, total covered payroll was assumed to increase annually at a rate of 3.90 percent.
- Employee contributions were assumed to be made at the current member contribution rate. Employee contributions for future plan members were used to reduce the estimated amount of total service costs for future plan members.
- Employer contributions were assumed to be made at rates equal to the fixed statutory rates specified in law, including current and estimated future AED and SAED, until the Actuarial Value Funding Ratio reaches 103 percent, at which point, the AED and SAED will each drop 0.50 percent every year until they are zero. Additionally, estimated employer contributions included reductions for the funding of the AIR and retiree health care benefits. For future plan members, employer contributions were further reduced by the estimated amount of total service costs for future plan members not financed by their member contributions.
- Employer contributions and the amount of total service costs for future plan members were based upon a process used by the plan to estimate future actuarially determined contributions assuming an analogous future plan member growth rate.

ARAPAHOE COUNTY SCHOOL DISTRICT NUMBER SIX
Notes to Basic Financial Statements

- The AIR balance was excluded from the initial fiduciary net position, as, per statute, AIR amounts cannot be used to pay benefits until transferred to either the retirement benefits reserve or the survivor benefits reserve, as appropriate. As the ad hoc post-retirement benefit increases financed by the AIR are defined to have a present value at the long-term expected rate of return on plan investments equal to the amount transferred for their future payment, AIR transfers to the fiduciary net position and the subsequent AIR benefit payments have no impact on the Single Equivalent Interest Rate (SEIR) determination process when the timing of AIR cash flows is not a factor (i.e., the plan’s fiduciary net position is not projected to be depleted). When AIR cash flow timing is a factor in the SEIR determination process (i.e., the plan’s fiduciary net position is projected to be depleted), AIR transfers to the fiduciary net position and the subsequent AIR benefit payments were estimated and included in the projections.
- Benefit payments and contributions were assumed to be made at the end of the month.

Based on the above actuarial cost method and assumptions, the SCHDTF’s fiduciary net position was projected to be available to make all projected future benefit payments of current members. Therefore, the long-term expected rate of return on pension plan investments was applied to all periods of projected benefit payments to determine the total pension liability. The discount rate determination does not use the Municipal Bond Index Rate. There was no change in the discount rate from the prior measurement date.

Sensitivity of the District’s, Littleton Academy’s, and Littleton Preparatory’s proportionate share of the net pension liability to changes in the discount rate. The following presents the proportionate share of the net pension liability calculated using the discount rate of 7.50 percent, as well as what the proportionate share of the net pension liability would be if it were calculated using a discount rate that is 1 percentage point lower (6.50 percent) or 1 percentage point higher (8.50 percent) than the current rate:

	<u>1% Decrease (6.50%)</u>	<u>Current Discount Rate (7.50%)</u>	<u>1% Increase (8.50%)</u>
District’s proportionate share of the net pension liability	\$422,231,694	\$325,722,592	\$245,445,059
Littleton Academy’s proportionate share of the net pension liability	7,629,630	5,885,733	4,435,136
Littleton Preparatory’s proportionate share of the net pension liability	11,157,783	8,607,459	6,486,066

Pension plan fiduciary net position. Detailed information about the SCHDTF’s fiduciary net position is available in PERA’s comprehensive annual financial report, which can be obtained at www.copera.org/investments/pera-financial-reports.

E. Postemployment Healthcare Benefits

Plan description. The district, Littleton Academy, and Littleton Preparatory contributes to the Health Care Trust Fund (HCTF), a cost-sharing, multiple-employer postemployment healthcare plan administered by PERA. The HCTF benefit provides a health care premium subsidy and health care programs (known as PERACare) to PERA-participating benefit recipients and their eligible

ARAPAHOE COUNTY SCHOOL DISTRICT NUMBER SIX

Notes to Basic Financial Statements

beneficiaries. Title 24, Article 51, Part 12 of the C.R.S., as amended, establishes the HCTF and sets forth a framework that grants authority to the PERA Board to contract, self-insure, and authorize disbursements necessary in order to carry out the purposes of the PERACare program, including the administration of health care subsidies. PERA issues a publicly available comprehensive annual financial report that includes financial statements and required supplementary information for the HCTF. That report can be obtained at www.copera.org/investments/pera-financial-reports.

Funding policy. The district and its two charter schools are required to contribute at a rate of 1.02 percent of PERA-includable salary for all PERA members as set by statute. No member contributions are required. The contribution requirements for the district and its two charter schools are established under Title 24, Article 51, Part 4 of the C.R.S., as amended. The apportionment of the contribution of the HCTF is established under Title 24, Article 51, Section 208(1)(f) of the C.R.S., as amended. For the years ending June 30, 2016, 2015, and 2014, the district's contributions to the HCTF were \$968,952; \$889,184; and \$875,605; respectively, equal to their required contributions for each year. Littleton Academy's contributions to the HCTF for the fiscal years ending June 30, 2016, 2015, and 2014 were \$17,426; \$17,087; and \$16,506; respectively, equal to required contributions for each year, and Littleton Preparatory's contributions to the HCTF for the fiscal years ending June 30, 2016, 2015, and 2014 were \$25,009; \$24,147; and \$23,685; respectively, equal to required contributions for each year.

This page left blank and
unnumbered intentionally
for presentation purposes



Required Supplementary Information



This page left blank and
unnumbered intentionally
for presentation purposes



ARAPAHOE COUNTY SCHOOL DISTRICT NUMBER SIX

General Fund

Budgetary Comparison Schedule

For the Fiscal Year Ended June 30, 2016

	Budgeted Amounts		Actual	Variance With Final Budget- Positive (Negative)
	Original	Final		
REVENUES				
Taxes:				
Property taxes	\$ 67,656,795	\$ 67,656,795	\$ 67,509,040	\$ (147,755)
Specific ownership taxes	5,619,680	5,619,680	6,049,245	429,565
Intergovernmental revenue:				
Federal grants	980,000	980,000	1,028,308	48,308
State equalization aid	62,282,389	62,282,389	62,961,971	679,582
State education of students with disabilities	2,600,000	2,600,000	2,584,084	(15,916)
Other state entitlements	1,799,883	1,799,883	1,997,901	198,018
Investment earnings	63,363	63,363	87,253	23,890
Other	4,351,911	4,351,911	5,077,179	725,268
Total revenues	<u>145,354,021</u>	<u>145,354,021</u>	<u>147,294,981</u>	<u>1,940,960</u>
EXPENDITURES				
Current:				
Instruction	90,338,807	92,870,767	90,120,564	2,750,203
Support services:				
Pupil services	7,652,178	8,097,725	8,006,069	91,656
Instructional staff services	7,471,361	10,516,884	8,449,175	2,067,709
General administration	1,705,113	1,830,806	1,556,727	274,079
School administration	8,895,903	9,476,276	8,921,533	554,743
Financial administration	1,670,928	1,799,656	1,386,610	413,046
Operations administration	11,992,289	12,324,344	11,788,868	535,476
Transportation	4,519,491	4,772,362	4,303,866	468,496
Central administration	7,101,448	7,767,440	7,465,534	301,906
Community services	278,326	266,986	234,618	32,368
Contingency reserve	33,991,110	25,868,781	-	25,868,781
Total expenditures	<u>175,616,954</u>	<u>175,592,027</u>	<u>142,233,564</u>	<u>33,358,463</u>
EXCESS OF REVENUES OVER (UNDER) EXPENDITURES	<u>(30,262,933)</u>	<u>(30,238,006)</u>	<u>5,061,417</u>	<u>35,299,423</u>
OTHER FINANCING SOURCES (USES)				
Transfers in	187,262	187,262	199,094	11,832
Transfers out	<u>(6,200,227)</u>	<u>(6,200,227)</u>	<u>(6,200,227)</u>	<u>-</u>
Total other financing sources (uses)	<u>(6,012,965)</u>	<u>(6,012,965)</u>	<u>(6,001,133)</u>	<u>11,832</u>
NET CHANGE IN FUND BALANCE	<u>(36,275,898)</u>	<u>(36,250,971)</u>	<u>(939,716)</u>	<u>35,311,255</u>
FUND BALANCE—BEGINNING	<u>36,275,898</u>	<u>36,275,898</u>	<u>39,666,066</u>	<u>3,390,168</u>
FUND BALANCE—ENDING	<u>\$ -</u>	<u>\$ 24,927</u>	<u>\$ 38,726,350</u>	<u>\$ 38,701,423</u>

ARAPAHOE COUNTY SCHOOL DISTRICT NUMBER SIX
Risk Management Fund
Budgetary Comparison Schedule
For the Fiscal Year Ended June 30, 2016

	<u>Budgeted Amounts</u>		<u>Actual</u>	<u>Variance With</u>
	<u>Original</u>	<u>Final</u>		<u>Final Budget-</u>
				<u>(Negative)</u>
REVENUES				
Investment earnings	\$ 1,800	\$ 1,800	\$ 4,054	\$ 2,254
Other	91,300	91,300	92,516	1,216
Total revenues	<u>93,100</u>	<u>93,100</u>	<u>96,570</u>	<u>3,470</u>
EXPENDITURES				
Current:				
Risk management	2,045,889	2,045,889	1,914,980	130,909
Contingency reserve	<u>1,398,754</u>	<u>1,398,754</u>	-	<u>1,398,754</u>
Total expenditures	<u>3,444,643</u>	<u>3,444,643</u>	<u>1,914,980</u>	<u>1,529,663</u>
EXCESS OF REVENUES OVER (UNDER)				
EXPENDITURES	<u>(3,351,543)</u>	<u>(3,351,543)</u>	<u>(1,818,410)</u>	<u>1,533,133</u>
OTHER FINANCING SOURCES				
Transfers in	<u>1,952,789</u>	<u>1,952,789</u>	<u>1,952,789</u>	-
Total other financing sources	<u>1,952,789</u>	<u>1,952,789</u>	<u>1,952,789</u>	-
NET CHANGE IN FUND BALANCE	(1,398,754)	(1,398,754)	134,379	1,533,133
FUND BALANCE—BEGINNING	<u>1,398,754</u>	<u>1,398,754</u>	<u>1,252,012</u>	<u>(146,742)</u>
FUND BALANCE—ENDING	<u><u>\$ -</u></u>	<u><u>\$ -</u></u>	<u><u>\$ 1,386,391</u></u>	<u><u>\$ 1,386,391</u></u>

ARAPAHOE COUNTY SCHOOL DISTRICT NUMBER SIX
Notes to Required Supplementary Information
June 30, 2016

NOTE 1: Budgetary Information

- a. The District prepares budgets for all funds, except the Fiduciary Fund (Agency Fund). During May, the superintendent of schools submits to the Board of Education a proposed budget for all funds for the fiscal year commencing July 1. The budget includes proposed expenditures and the means for financing them.
- b. Notice is provided to taxpayers of the availability for inspection of the proposed budget. Prior to June 30, the budget is adopted by formal resolution of the Board of Education. C.R.S. 22-44-110 (5) allows the Board of Education to review and change the Adopted Budget, with respect to both revenues and expenditures, at any time prior to January 31.
- c. Expenditures may not legally exceed appropriations at the fund level. Authorization to transfer budgeted amounts between departments within any fund and the reallocation of budget line items within any department within any fund rests with the superintendent of schools. Revisions that alter the total expenditures of any fund must be approved by the Board of Education. Appropriations are based on total funds expected to be available in each budget year including beginning fund balances and reserves as established by the Board of Education.
- d. Budgets are adopted on a basis consistent with GAAP.
- e. The budgets reported in the accompanying financial statements and schedules as adopted by the Board of Education were done so as authorized.
- f. Appropriations for all funds lapse at the fiscal year end.
- g. The Risk Management Fund is a sub-fund of the General Fund and its budget is approved by the Board of Education annually. The Statement of Revenues, Expenditures, and Changes in Fund Balances combines the actual revenues and expenditures of the General Fund and the Risk Management Fund. A budgetary comparison schedule is provided separately for both the General Fund and the Risk Management Fund. The following is a reconciliation of the General Fund actual revenues and expenditures as reported in the Statement of Revenues, Expenditures, and Changes in Fund Balance.

	General Fund	Risk Management Fund	Total
Revenue	\$ 147,294,981	\$ 96,570	\$ 147,391,551
Expenditures	(142,233,564)	(1,914,980)	(144,148,544)
Excess Revenues			
Over (Under) Expenditures	5,061,417	(1,818,410)	3,243,007
Other Sources (Uses)	(6,001,133)	1,952,789	(4,048,344)
Net Change in Fund Balances	(939,716)	134,379	(805,337)
Fund Balance—Beginning	39,666,066	1,252,012	40,918,078
Fund Balance—Ending	\$ 38,726,350	\$ 1,386,391	\$ 40,112,741

ARAPAHOE COUNTY SCHOOL DISTRICT NUMBER SIX
Schedules of Required Supplementary Information
June 30, 2016

Schedule of the District's Proportionate Share of the Net Pension Liability
PERA Pension Plan
Last Three Fiscal Years*
(Dollar amounts in thousands)

	<u>2013</u>	<u>2014</u>	<u>2015</u>
District's proportion of the net pension liability (asset)	2.27%	2.25%	2.22%
District's proportionate share of the net pension liability (asset)	\$ 277,142	\$ 291,875	\$ 325,723
District covered-employee payroll	\$ 90,007	\$ 90,761	\$ 93,180
District's proportionate share of the net pension liability (asset) as a percentage of its covered-employee payroll	307.91%	321.59%	349.56%
Plan fiduciary net position as a percentage of the total pension liability	64.06%	62.80%	59.20%

* The amounts presented for each fiscal year were determined as of the calendar year-end that occurred within the fiscal year.

Note: Information for 2006 to 2012 is not available.

Schedule of the District Contributions
PERA Pension Plan
Last Five Fiscal Years*
(Dollar amounts in thousands)

	<u>2012</u>	<u>2013</u>	<u>2014</u>	<u>2015</u>	<u>2016</u>
Contractually required contribution	\$ 12,046	\$ 13,039	\$ 14,260	\$ 15,327	\$ 16,843
Contributions in relation to the contractually required contribution	(12,046)	(13,039)	(14,260)	(15,327)	(16,843)
Contribution deficiency (excess)	<u>\$ -</u>	<u>\$ -</u>	<u>\$ -</u>	<u>\$ -</u>	<u>\$ -</u>
District's covered-employee payroll	\$ 88,496	\$ 90,415	\$ 89,784	\$ 91,217	\$ 95,915
Contributions as a percentage of covered-employee payroll	13.61%	14.42%	15.88%	16.80%	17.56%

* The amounts presented for each fiscal year were determined as of June 30.

Note: Information for 2007 to 2011 is not available.

Combining and Individual Fund Statements and Schedules



This page left blank and
unnumbered intentionally
for presentation purposes



ARAPAHOE COUNTY SCHOOL DISTRICT NUMBER SIX

Nonmajor Governmental Funds

The first statements and schedules in this supplementary information are those of the nonmajor governmental funds. Special revenue funds are used to account for specific revenues that are restricted or committed to expenditures for particular purposes.

Designated Purpose Grants Fund. This fund is used to account for federal, state, and local grants which are restricted as to the type of expenditures for the grants may be used.

Extended Day Care Fund. This fund is used to account for preschool, full-day kindergarten, and before- and after- school day care programs.

Nutrition Services Fund. This fund is used to account for the operation of breakfast, lunch, and summer feeding programs

Student Athletic and Activities Fund. This fund accounts for extracurricular activities at the elementary, middle, and high school levels; intramural athletic programs at the middle level; and varsity athletics programs and District-sponsored activities at the high school level.

Capital Projects Fund. This fund is used to account for the acquisition of land, construction of new facilities, alterations and improvements to existing structures, and the acquisition of school buses and/or other equipment.

ARAPAHOE COUNTY SCHOOL DISTRICT NUMBER SIX
Combining Balance Sheet
Nonmajor Governmental Funds
June 30, 2016

	<u>Designated Purpose Grants Fund</u>	<u>Extended Day Care Program Fund</u>	<u>Nutrition Services Fund</u>
ASSETS			
Equity in pooled cash and investments	\$ 5,508	\$ 1,973,150	\$ 1,330,220
Due from other governments	<u>1,100,082</u>	<u>-</u>	<u>23,806</u>
Total assets	<u><u>\$ 1,105,590</u></u>	<u><u>\$ 1,973,150</u></u>	<u><u>\$ 1,354,026</u></u>
 LIABILITIES AND FUND BALANCES			
Liabilities:			
Accounts and contracts payable	\$ 9,254	\$ 4,686	\$ 2,653
Accrued compensation	240,796	266,384	110,234
Unearned revenue	<u>855,540</u>	<u>60,861</u>	<u>148,182</u>
Total liabilities	<u><u>1,105,590</u></u>	<u><u>331,931</u></u>	<u><u>261,069</u></u>
Fund balances:			
Restricted for:			
Nutrition services	-	-	1,092,957
Committed for:			
Capital projects	-	-	-
Student care services	-	1,641,219	-
Pupil activities	-	-	-
Assigned for:			
Beverage sponsorship for student needs	<u>-</u>	<u>-</u>	<u>-</u>
Total fund balances	<u><u>-</u></u>	<u><u>1,641,219</u></u>	<u><u>1,092,957</u></u>
Total liabilities and fund balances	<u><u>\$ 1,105,590</u></u>	<u><u>\$ 1,973,150</u></u>	<u><u>\$ 1,354,026</u></u>

ARAPAHOE COUNTY SCHOOL DISTRICT NUMBER SIX
Combining Balance Sheet
Nonmajor Governmental Funds
June 30, 2016

	Student Athletic and Activities Fund	Capital Projects Fund	Total Nonmajor Governmental Funds
	<u> </u>	<u> </u>	<u> </u>
ASSETS			
Equity in pooled cash and investments	\$ 1,257,350	\$ 3,796,464	\$ 8,362,692
Due from other governments	15,096	-	1,138,984
	<u> </u>	<u> </u>	<u> </u>
Total assets	<u>\$ 1,272,446</u>	<u>\$ 3,796,464</u>	<u>\$ 9,501,676</u>
 LIABILITIES AND FUND BALANCES			
Liabilities:			
Accounts and contracts payable	\$ 29,596	\$ 590,654	\$ 636,843
Accrued compensation	34,036	-	651,450
Unearned revenue	3,990	-	1,068,573
	<u> </u>	<u> </u>	<u> </u>
Total liabilities	<u>67,622</u>	<u>590,654</u>	<u>2,356,866</u>
 Fund balances:			
Restricted for:			
Nutrition services	-	-	1,092,957
Committed for:			
Capital projects	-	3,205,810	3,205,810
Student care services	-	-	1,641,219
Pupil activities	1,159,052	-	1,159,052
Assigned for:			
Beverage sponsorship for student needs	45,772	-	45,772
	<u> </u>	<u> </u>	<u> </u>
Total fund balances	<u>1,204,824</u>	<u>3,205,810</u>	<u>7,144,810</u>
Total liabilities and fund balances	<u>\$ 1,272,446</u>	<u>\$ 3,796,464</u>	<u>\$ 9,501,676</u>

ARAPAHOE COUNTY SCHOOL DISTRICT NUMBER SIX
Combining Statement of Revenues, Expenditures, and
Changes in Fund Balances
Nonmajor Governmental Funds
For the Fiscal Year Ended June 30, 2016

	Designated Purpose Grants Fund	Extended Day Care Program Fund	Nutrition Services Fund
REVENUES			
Intergovernmental revenue:			
Federal grants	\$ 3,953,101	\$ -	\$ 1,418,188
Donated commodities	-	-	246,190
State grants	435,789	-	50,488
Food sales	-	-	2,013,244
Pupil activities	-	-	-
Student care	-	5,149,373	-
Investment earnings	-	6,636	4,693
Other	240,824	21,029	106,975
	<u>4,629,714</u>	<u>5,177,038</u>	<u>3,839,778</u>
EXPENDITURES			
Current:			
Instruction	2,385,327	-	-
Support services	2,244,387	4,528,575	3,902,387
Capital outlay	-	135,828	-
	<u>4,629,714</u>	<u>4,664,403</u>	<u>3,902,387</u>
EXCESS OF REVENUES OVER (UNDER)			
EXPENDITURES	-	512,635	(62,609)
OTHER FINANCING SOURCES			
Transfers in	-	-	-
Transfers out	-	(199,094)	-
	<u>-</u>	<u>(199,094)</u>	<u>-</u>
NET CHANGE IN FUND BALANCE	-	313,541	(62,609)
FUND BALANCE—BEGINNING	<u>-</u>	<u>1,327,678</u>	<u>1,155,566</u>
FUND BALANCES—ENDING	<u>\$ -</u>	<u>\$ 1,641,219</u>	<u>\$ 1,092,957</u>

ARAPAHOE COUNTY SCHOOL DISTRICT NUMBER SIX
Combining Statement of Revenues, Expenditures, and
Changes in Fund Balances
Nonmajor Governmental Funds
For the Fiscal Year Ended June 30, 2016

	Student Athletic and Activities Fund	Capital Projects Fund	Total Nonmajor Governmental Funds
REVENUES			
Intergovernmental revenue:			
Federal grants	\$ -	\$ -	\$ 5,371,289
Donated commodities	-	-	246,190
State grants	-	-	486,277
Food sales	-	-	2,013,244
Pupil activities	2,178,587	-	2,178,587
Student care	-	-	5,149,373
Investment earnings	5,073	13,261	29,663
Other	15,243	468,112	852,183
	<u>2,198,903</u>	<u>481,373</u>	<u>16,326,806</u>
Total revenues			
EXPENDITURES			
Current:			
Instruction	-	-	2,385,327
Support services	4,020,649	-	14,695,998
Capital outlay	90,718	2,372,108	2,598,654
	<u>4,111,367</u>	<u>2,372,108</u>	<u>19,679,979</u>
Total expenditures			
EXCESS OF REVENUES OVER (UNDER)			
EXPENDITURES	(1,912,464)	(1,890,735)	(3,353,173)
OTHER FINANCING SOURCES			
Transfers in	1,814,403	2,433,035	4,247,438
Transfers out	-	-	(199,094)
	<u>1,814,403</u>	<u>2,433,035</u>	<u>4,048,344</u>
Total other financing sources			
NET CHANGE IN FUND BALANCE	(98,061)	542,300	695,171
FUND BALANCE—BEGINNING	<u>1,302,885</u>	<u>2,663,510</u>	<u>6,449,639</u>
FUND BALANCES—ENDING	<u>\$ 1,204,824</u>	<u>\$ 3,205,810</u>	<u>\$ 7,144,810</u>

ARAPAHOE COUNTY SCHOOL DISTRICT NUMBER SIX
 Designated Purpose Grants Fund
 Budgetary Comparison Schedule
 For the Fiscal Year Ended June 30, 2016

	Budget		Actual	Variance With
	Original	Final		Final Budget- Positive (Negative)
REVENUES				
Intergovernmental revenue:				
Federal grants	\$ 3,923,028	\$ 3,923,028	\$ 3,953,101	\$ 30,073
State grants	435,817	435,817	435,789	(28)
Other	573,761	573,761	240,824	(332,937)
Total revenues	<u>4,932,606</u>	<u>4,932,606</u>	<u>4,629,714</u>	<u>(302,892)</u>
EXPENDITURES				
Current:				
Instruction	3,280,183	3,280,183	2,385,327	894,856
Support services	1,652,423	1,652,423	2,244,387	(591,964)
Total expenditures	<u>4,932,606</u>	<u>4,932,606</u>	<u>4,629,714</u>	<u>302,892</u>
NET CHANGE IN FUND BALANCE	-	-	-	-
FUND BALANCE—BEGINNING	<u>-</u>	<u>-</u>	<u>-</u>	<u>-</u>
FUND BALANCE—ENDING	<u>\$ -</u>	<u>\$ -</u>	<u>\$ -</u>	<u>\$ -</u>

ARAPAHOE COUNTY SCHOOL DISTRICT NUMBER SIX
Extended Day Care Program Fund
Budgetary Comparison Schedule
For the Fiscal Year Ended June 30, 2016

	<u>Budget</u>		<u>Actual</u>	<u>Variance With</u>
	<u>Original</u>	<u>Final</u>		<u>Final Budget-</u>
				<u>Positive</u>
				<u>(Negative)</u>
REVENUES				
Student care fees	\$ 4,802,939	\$ 4,802,939	\$ 5,149,373	\$ 346,434
Investment earnings	1,500	1,500	6,636	5,136
Contributions	13,600	13,600	21,029	7,429
Total revenues	<u>4,818,039</u>	<u>4,818,039</u>	<u>5,177,038</u>	<u>358,999</u>
EXPENDITURES				
Salaries and employee benefits	4,060,853	4,060,853	4,102,912	(42,059)
Purchased services	183,775	183,775	167,958	15,817
Supplies	290,824	290,824	186,263	104,561
Equipment	15,119	15,119	144,112	(128,993)
Other	80,206	80,206	63,158	17,048
Transfers out	187,262	187,262	199,094	(11,832)
Contingency reserve	1,441,975	1,441,975	-	1,441,975
Total expenditures	<u>6,260,014</u>	<u>6,260,014</u>	<u>4,863,497</u>	<u>1,396,517</u>
NET CHANGE IN FUND BALANCE	(1,441,975)	(1,441,975)	313,541	1,755,516
FUND BALANCE—BEGINNING	<u>1,441,975</u>	<u>1,441,975</u>	<u>1,327,678</u>	<u>(114,297)</u>
FUND BALANCE—ENDING	<u><u>\$ -</u></u>	<u><u>\$ -</u></u>	<u><u>\$ 1,641,219</u></u>	<u><u>\$ 1,641,219</u></u>

ARAPAHOE COUNTY SCHOOL DISTRICT NUMBER SIX

Nutrition Services Fund

Budgetary Comparison Schedule

For the Fiscal Year Ended June 30, 2016

	Budget		Actual	Variance With Final Budget- Positive (Negative)
	Original	Final		
REVENUES				
Food sales	\$ 2,367,500	\$ 2,367,500	\$ 2,013,244	\$ (354,256)
Federal aid:				
Federal government programs reimbursements	1,410,500	1,410,500	1,418,188	7,688
Donated commodities	227,667	227,667	246,190	18,523
State programs reimbursement	53,000	53,000	50,488	(2,512)
Investment earnings	1,000	1,000	4,693	3,693
Other	102,100	102,100	106,975	4,875
	<u>4,161,767</u>	<u>4,161,767</u>	<u>3,839,778</u>	<u>(321,989)</u>
EXPENDITURES				
Salaries and employee benefits	1,931,910	1,931,910	1,939,669	(7,759)
Purchased services	261,690	261,690	214,569	47,121
Supplies	115,000	115,000	118,160	(3,160)
Food costs:				
Purchased food	1,520,000	1,520,000	1,315,862	204,138
Donated commodities	227,667	227,667	246,190	(18,523)
Equipment	100,500	100,500	60,145	40,355
Other	5,000	5,000	7,792	(2,792)
Contingency reserve	1,666,275	1,666,275	-	1,666,275
	<u>5,828,042</u>	<u>5,828,042</u>	<u>3,902,387</u>	<u>1,925,655</u>
NET CHANGE IN FUND BALANCE	(1,666,275)	(1,666,275)	(62,609)	1,603,666
FUND BALANCE—BEGINNING	<u>1,666,275</u>	<u>1,666,275</u>	<u>1,155,566</u>	<u>(510,709)</u>
FUND BALANCE—ENDING	<u>\$ -</u>	<u>\$ -</u>	<u>\$ 1,092,957</u>	<u>\$ 1,092,957</u>

ARAPAHOE COUNTY SCHOOL DISTRICT NUMBER SIX
Student Athletic and Activities Fund
Budgetary Comparison Schedule
For the Fiscal Year Ended June 30, 2016

	Budget		Actual	Variance With
	Original	Final		Final Budget- Positive (Negative)
REVENUES				
Pupil activities	\$ 2,168,700	\$ 2,168,700	\$ 2,178,587	\$ 9,887
Investment earnings	1,600	1,600	5,073	3,473
Other	14,101	14,101	15,243	1,142
Total revenues	<u>2,184,401</u>	<u>2,184,401</u>	<u>2,198,903</u>	<u>14,502</u>
EXPENDITURES				
Current:				
Support services	3,997,204	5,751,397	4,111,367	1,640,030
Contingency reserve	1,124,033	(630,160)	-	(630,160)
Total expenditures	<u>5,121,237</u>	<u>5,121,237</u>	<u>4,111,367</u>	<u>1,009,870</u>
EXCESS OF REVENUES OVER (UNDER) EXPENDITURES	(2,936,836)	(2,936,836)	(1,912,464)	1,024,372
OTHER FINANCING SOURCES				
Transfers in	1,814,403	1,814,403	1,814,403	-
Total other financing sources	<u>1,814,403</u>	<u>1,814,403</u>	<u>1,814,403</u>	<u>-</u>
NET CHANGE IN FUND BALANCE	(1,122,433)	(1,122,433)	(98,061)	1,024,372
FUND BALANCE—BEGINNING	<u>1,122,433</u>	<u>1,122,433</u>	<u>1,302,885</u>	<u>180,452</u>
FUND BALANCE—ENDING	<u>\$ -</u>	<u>\$ -</u>	<u>\$ 1,204,824</u>	<u>\$ 1,204,824</u>

ARAPAHOE COUNTY SCHOOL DISTRICT NUMBER SIX
Capital Projects Fund
Budgetary Comparison Schedule
For the Fiscal Year Ended June 30, 2016

	<u>Budget</u>		<u>Actual</u>	<u>Variance With</u>
	<u>Original</u>	<u>Final</u>		<u>Final Budget-</u>
				<u>Positive</u>
				<u>(Negative)</u>
REVENUES				
Investment earnings	\$ 2,000	\$ 2,000	\$ 13,261	\$ 11,261
Other revenue	702,000	702,000	468,112	(233,888)
Total revenues	<u>704,000</u>	<u>704,000</u>	<u>481,373</u>	<u>(222,627)</u>
EXPENDITURES				
Capital outlay	3,004,570	3,004,570	2,372,108	632,462
Contingency reserve	3,088,397	3,088,397	-	3,088,397
Total expenditures	<u>6,092,967</u>	<u>6,092,967</u>	<u>2,372,108</u>	<u>3,720,859</u>
EXCESS OF REVENUES OVER (UNDER)				
EXPENDITURES	(5,388,967)	(5,388,967)	(1,890,735)	3,498,232
OTHER FINANCING SOURCES				
Transfers in	2,433,035	2,433,035	2,433,035	-
NET CHANGE IN FUND BALANCE	(2,955,932)	(2,955,932)	542,300	3,498,232
FUND BALANCE—BEGINNING	<u>2,955,932</u>	<u>2,955,932</u>	<u>2,663,510</u>	<u>(292,422)</u>
FUND BALANCE—ENDING	<u>\$ -</u>	<u>\$ -</u>	<u>\$ 3,205,810</u>	<u>\$ 3,205,810</u>

ARAPAHOE COUNTY SCHOOL DISTRICT NUMBER SIX
Debt Service Fund
Budgetary Comparison Schedule
For the Fiscal Year Ended June 30, 2016

	Budget		Actual	Variance With Final Budget- Positive (Negative)
	Original	Final		
REVENUES				
Property taxes	\$ 12,947,001	\$ 12,947,001	\$ 12,753,459	\$ (193,542)
Investment earnings	8,000	8,000	17,617	9,617
Total revenues	<u>12,955,001</u>	<u>12,955,001</u>	<u>12,771,076</u>	<u>(183,925)</u>
EXPENDITURES				
Debt service:				
Principal	5,475,000	5,475,000	5,475,000	-
Interest and fiscal charges	5,881,793	5,881,793	5,922,169	(40,376)
Contingency reserve	<u>10,480,361</u>	<u>10,480,361</u>	<u>-</u>	<u>10,480,361</u>
Total expenditures	<u>21,837,154</u>	<u>21,837,154</u>	<u>11,397,169</u>	<u>10,439,985</u>
NET CHANGE IN FUND BALANCE	(8,882,153)	(8,882,153)	1,373,907	10,256,060
FUND BALANCE—BEGINNING	<u>8,882,153</u>	<u>8,882,153</u>	<u>9,180,321</u>	<u>298,168</u>
FUND BALANCE—ENDING	<u><u>\$ -</u></u>	<u><u>\$ -</u></u>	<u><u>\$ 10,554,228</u></u>	<u><u>\$ 10,554,228</u></u>

ARAPAHOE COUNTY SCHOOL DISTRICT NUMBER SIX
Capital Projects—Building Fund
Budgetary Comparison Schedule
For the Fiscal Year Ended June 30, 2016

	Budget		Actual	Variance With Final Budget- Positive (Negative)
	Original	Final		
REVENUES				
Interest earnings	\$ 158,500	\$ 158,500	\$ 394,039	\$ 235,539
Other	-	-	11,089	11,089
Total revenues	<u>158,500</u>	<u>158,500</u>	<u>405,128</u>	<u>11,089</u>
EXPENDITURES				
Capital projects:				
Building and improvements	35,520,258	35,520,258	36,945,651	(1,425,393)
Bond issuance costs	164,350	164,350	152,621	11,729
Contingency reserve	31,384,583	31,384,583	-	31,384,583
Total expenditures	<u>67,069,191</u>	<u>67,069,191</u>	<u>37,098,272</u>	<u>29,970,919</u>
EXCESS OF REVENUES OVER (UNDER) EXPENDITURES	<u>(66,910,691)</u>	<u>(66,910,691)</u>	<u>(36,693,144)</u>	<u>29,982,008</u>
OTHER FINANCING SOURCES (USES)				
Bonds proceeds	13,000,000	13,000,000	15,626,195	2,626,195
Premium on bonds	2,387,500	2,387,500	2,262,339	(125,161)
Total other financing sources (uses)	<u>15,387,500</u>	<u>15,387,500</u>	<u>17,888,534</u>	<u>2,501,034</u>
NET CHANGE IN FUND BALANCE	(51,523,191)	(51,523,191)	(18,804,610)	27,480,974
FUND BALANCE—BEGINNING	<u>51,523,191</u>	<u>51,523,191</u>	<u>46,888,715</u>	<u>(4,634,476)</u>
FUND BALANCE—ENDING	<u>\$ -</u>	<u>\$ -</u>	<u>\$ 28,084,105</u>	<u>\$ 22,846,498</u>

ARAPAHOE COUNTY SCHOOL DISTRICT NUMBER SIX
Statement of Changes in Assets and Liabilities
Fiduciary Fund (Agency Fund)
For the Fiscal Year Ended June 30, 2016

	Balance July 1, 2015	Additions	Deletions	Balance June 30, 2016
ASSETS				
Equity in pooled cash and investments	\$ 255,584	\$ 592,440	\$ 441,588	\$ 406,436
Total assets	<u>\$ 255,584</u>	<u>\$ 592,440</u>	<u>\$ 441,588</u>	<u>\$ 406,436</u>
LIABILITIES				
Accounts payable	\$ 8,606	\$ -	\$ 8,606	\$ -
Due to student clubs and other organizations	246,978	592,440	432,982	406,436
Total liabilities	<u>\$ 255,584</u>	<u>\$ 592,440</u>	<u>\$ 441,588</u>	<u>\$ 406,436</u>

ARAPAHOE COUNTY SCHOOL DISTRICT NUMBER SIX
Combining Statement of Net Position
Component Units
June 30, 2016

	Littleton Academy Charter School	Littleton Preparatory Charter School	Total Component Units
ASSETS			
Equity in pooled cash and investments	\$ 1,716,508	\$ 1,536,905	\$ 3,253,413
Restricted cash and investments	600,803	779,990	1,380,793
Capital assets—net of accumulated depreciation			
Land	1,019,806	870,000	1,889,806
Land improvements	157,202	-	157,202
Building and leasehold improvements	4,547,144	5,583,441	10,130,585
Equipment	9,425	10,752	20,177
Construction in progress	4,017	57,339	61,356
Total assets	<u>8,054,905</u>	<u>8,838,427</u>	<u>16,893,332</u>
DEFERRED OUTFLOWS OF RESOURCES			
Deferred loss on refunding	354,542	-	354,542
Deferred pension outflows of resources	739,531	1,075,451	1,814,982
Total deferred outflows	<u>1,094,073</u>	<u>1,075,451</u>	<u>2,169,524</u>
LIABILITIES			
Accounts and contracts payable	8,193	47,881	56,074
Accrued compensation	158,987	205,949	364,936
Accrued interest	86,160	29,688	115,848
Unearned revenue	1,550	23,425	24,975
Noncurrent liabilities:			
Due within one year	142,908	125,074	267,982
Due in more than one year	4,174,389	7,131,844	11,306,233
Net pension liability	5,885,733	8,607,459	14,493,192
Total liabilities	<u>10,457,920</u>	<u>16,171,320</u>	<u>26,629,240</u>
DEFERRED INFLOWS OF RESOURCES			
Deferred pension inflows of resources	207,117	121,995	329,112
NET POSITION			
Net investment in capital assets	2,108,062	(41,053)	2,067,009
Restricted for:			
Debt service	81,420	110,052	191,472
Emergency reserve under TABOR	114,300	149,000	263,300
Repair and replacement	100,000	160,000	260,000
Unrestricted	(3,919,841)	(6,757,436)	(10,677,277)
Total net position	<u>\$ (1,516,059)</u>	<u>\$ (6,379,437)</u>	<u>\$ (7,895,496)</u>

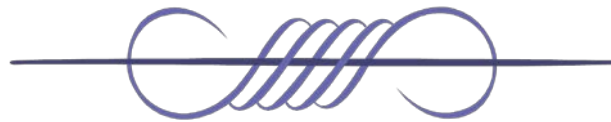
ARAPAHOE COUNTY SCHOOL DISTRICT NUMBER SIX
Combining Statement of Activities
Component Units
For the Fiscal Year Ended June 30, 2016

	<u>Littleton Academy Charter School</u>	<u>Littleton Preparatory Charter School</u>	<u>Total Component Units</u>
REVENUES			
Intergovernmental revenue:			
State equalization aid	\$ 3,119,115	\$ 3,884,888	\$ 7,004,003
Supplemental funding from District	361,440	376,068	737,508
Fees for services	156,839	405,125	561,964
Investment earnings	9,451	6,215	15,666
Capital grants and contributions	114,563	142,687	257,250
Operating grants and contributions	63,258	69,975	133,233
Other	69,991	153,186	223,177
	<u>3,894,657</u>	<u>5,038,144</u>	<u>8,932,801</u>
EXPENSES			
Current:			
Instruction	2,713,629	3,539,216	6,252,845
Support services	1,090,563	1,279,768	2,370,331
Debt service:			
Interest charges	216,499	353,572	570,071
	<u>4,020,691</u>	<u>5,172,556</u>	<u>9,193,247</u>
CHANGE IN NET POSITION	(126,034)	(134,412)	(260,446)
NET POSITION—BEGINNING	<u>(1,390,025)</u>	<u>(6,245,025)</u>	<u>(7,635,050)</u>
NET POSITION—END OF THE YEAR	<u><u>\$ (1,516,059)</u></u>	<u><u>\$ (6,379,437)</u></u>	<u><u>\$ (7,895,496)</u></u>

This page left blank and
unnumbered intentionally
for presentation purposes



STATISTICAL SECTION



ARAPAHOE COUNTY SCHOOL DISTRICT NUMBER SIX

Statistical Section

(Unaudited)

This part of the Arapahoe County School District Number Six's (the District) Comprehensive Annual Financial Report presents detailed information as a context for understanding what the information in the financial statements, note disclosures, and required supplementary information says about the District's overall financial health.

<u>Contents</u>	<u>Pages</u>
Financial Trends	
These schedules contain trend information to help the reader understand how the District's financial performance and well-being have changed over time.	69–76
Revenue Capacity	
These schedules contain information to help the reader assess the District's most significant local revenue source, the property tax.	77–81
Debt Capacity	
These schedules present information to help the reader assess the affordability of the District's current level of outstanding debt and the District's ability to issue additional debt in the future.	82–85
Demographic and Economic Information	
These schedules offer demographic and economic indicators to help the reader understand the environment in which the District's financial activities take place.	86–88
Operating Information	
These schedules contain service and infrastructure data to help the reader understand how the information in the District's financial report relates to the educational services provided and the activities performed.	89–91

Sources: Unless otherwise noted, the information in these schedules is derived from the comprehensive annual financial reports for the relevant fiscal year.

ARAPAHOE COUNTY SCHOOL DISTRICT NUMBER SIX
Net Position by Component
Last Ten Fiscal Years
(Unaudited)

	Fiscal Year				
	2007	2008	2009	2010	2011
Governmental activities:					
Net investment in capital assets	\$ 22,900,559	\$ 20,803,175	\$ 18,313,777	\$ 14,946,827	\$ 15,424,322
Restricted	14,664,320	13,828,226	14,514,699	10,557,222	10,769,180
Unrestricted	18,063,851	15,336,759	10,859,114	16,571,476	31,709,176
Total governmental activities net position	<u>55,628,730</u>	<u>49,968,160</u>	<u>43,687,590</u>	<u>42,075,525</u>	<u>57,902,678</u>
Business-type activities:					
Net investment in capital assets	1,887,688	1,848,680	1,697,355	1,709,469	1,599,267
Restricted	-	-	-	-	-
Unrestricted	2,388,918	2,496,536	2,355,105	2,124,913	2,327,981
Total business-type activities net position	<u>4,276,606</u>	<u>4,345,216</u>	<u>4,052,460</u>	<u>3,834,382</u>	<u>3,927,248</u>
Primary government:					
Net investment in capital assets	24,788,247	22,651,855	20,011,132	16,656,296	17,023,589
Restricted	14,664,320	13,828,226	14,514,699	10,557,222	10,769,180
Unrestricted	20,452,769	17,833,295	13,214,219	18,696,389	34,037,157
Total primary government net position	<u>\$ 59,905,336</u>	<u>\$ 54,313,376</u>	<u>\$ 47,740,050</u>	<u>\$ 45,909,907</u>	<u>\$ 61,829,926</u>

(a) Beginning July 1, 2014, business-type activities funds were reclassified as special revenue funds and are included in governmental activities.

ARAPAHOE COUNTY SCHOOL DISTRICT NUMBER SIX
Net Position by Component
Last Ten Fiscal Years
(Unaudited)

	Fiscal Year				
	2012	2013	2014	2015(a)	2016
Governmental activities:					
Net investment in capital assets	\$ 15,993,324	\$ 16,784,912	\$ 17,125,693	\$ 14,567,407	\$ 12,428,571
Restricted	11,538,069	13,518,897	12,961,494	14,416,693	15,789,139
Unrestricted	37,861,152	38,273,133	39,579,060	(238,088,742)	(251,710,052)
Total governmental activities net position	<u>65,392,545</u>	<u>68,576,942</u>	<u>69,666,247</u>	<u>(209,104,642)</u>	<u>(223,492,342)</u>
Business-type activities:					
Net investment in capital assets	684,349	590,080	485,840	-	-
Restricted	-	-	-	-	-
Unrestricted	2,272,209	2,230,341	2,480,355	-	-
Total business-type activities net position	<u>2,956,558</u>	<u>2,820,421</u>	<u>2,966,195</u>	<u>-</u>	<u>-</u>
Primary government:					
Net investment in capital assets	16,677,673	17,374,992	17,611,533	14,567,407	12,428,571
Restricted	11,538,069	13,518,897	12,961,494	14,416,693	15,789,139
Unrestricted	40,133,361	40,503,474	42,059,415	(238,088,742)	(251,710,052)
Total primary government net position	<u>\$ 68,349,103</u>	<u>\$ 71,397,363</u>	<u>\$ 72,632,442</u>	<u>\$ (209,104,642)</u>	<u>\$ (223,492,342)</u>

(a) Beginning July 1, 2014, business-type activities funds were reclassified as special revenue funds and are included in governmental activities.

ARAPAHOE COUNTY SCHOOL DISTRICT NUMBER SIX
Expenses, Program Revenues, and Net (Expense)/Revenue
Last Ten Fiscal Years
(Unaudited)

	Fiscal Year				
	2007	2008	2009	2010	2011
Expenses					
Governmental activities:					
Instruction	\$ 87,320,347	\$ 91,057,862	\$ 94,391,921	\$ 91,762,213	\$ 88,502,483
Support services	48,499,857	53,263,920	52,512,501	55,456,067	50,731,776
Interest expense	5,338,310	5,136,728	4,990,145	4,842,756	2,615,800
Total governmental activities expenses	<u>141,158,514</u>	<u>149,458,510</u>	<u>151,894,567</u>	<u>152,061,036</u>	<u>141,850,059</u>
Business-type activities:					
Nutrition services	3,515,088	3,809,881	3,807,903	3,932,099	4,055,026
Extended day care	4,191,433	4,577,099	4,642,713	4,096,499	3,647,186
Total business-type activities expenses	<u>7,706,521</u>	<u>8,386,980</u>	<u>8,450,616</u>	<u>8,028,598</u>	<u>7,702,212</u>
Total primary government expenses	<u>148,865,035</u>	<u>157,845,490</u>	<u>160,345,183</u>	<u>160,089,634</u>	<u>149,552,271</u>
Program Revenues					
Governmental activities:					
Charges for services:					
Direct instruction	901,636	907,545	801,400	1,055,511	906,655
Support services	2,344,584	2,169,189	2,049,197	2,982,932	3,160,481
Operating grants and contributions:					
Direct instruction	9,915,443	9,697,843	9,707,017	11,939,665	15,522,034
Support services	724,349	780,569	772,633	855,157	873,883
Total governmental activities program revenues	<u>13,886,012</u>	<u>13,555,146</u>	<u>13,330,247</u>	<u>16,833,265</u>	<u>20,463,053</u>
Business-type activities:					
Charges for services:					
Nutrition services	2,400,521	2,488,390	2,307,951	2,340,125	2,348,588
Extended day care	4,315,276	4,644,400	4,601,312	4,163,045	3,922,751
Operating grants and contributions:					
Nutrition services	1,177,605	1,282,186	1,309,378	1,413,772	1,654,068
Extended day care	55,138	60,280	28,928	30,595	12,210
Capital grants and contributions:					
Nutrition services	10,379	-	-	-	-
Extended day care	-	-	-	-	-
Total business-type activities program revenues	<u>7,958,919</u>	<u>8,475,256</u>	<u>8,247,569</u>	<u>7,947,537</u>	<u>7,937,617</u>
Total primary government revenues	<u>21,844,931</u>	<u>22,030,402</u>	<u>21,577,816</u>	<u>24,780,802</u>	<u>28,400,670</u>
Net (Expenses) Revenue					
Governmental activities	(127,272,502)	(135,903,364)	(138,564,320)	(135,227,771)	(121,387,006)
Business-type activities	252,398	88,276	(203,047)	(81,061)	235,405
Total primary government net expense	<u>\$(127,020,104)</u>	<u>\$(135,815,088)</u>	<u>\$(138,767,367)</u>	<u>\$(135,308,832)</u>	<u>\$(121,151,601)</u>

(a) Beginning July 1, 2014, business-type activities funds were reclassified as special revenue funds and are included in governmental activities.

ARAPAHOE COUNTY SCHOOL DISTRICT NUMBER SIX
Expenses, Program Revenues, and Net (Expense)/Revenue
Last Ten Fiscal Years
(Unaudited)

	Fiscal Year				
	2012	2013	2014	2015 (a)	2016
Expenses					
Governmental activities:					
Instruction	\$ 88,858,394	\$ 91,006,798	\$ 94,047,589	\$ 103,545,270	\$ 109,313,858
Support services	52,512,328	55,463,678	58,352,705	74,121,159	77,014,745
Interest expense	3,491,373	3,130,818	3,947,566	5,136,295	5,637,212
Total governmental activities expenses	<u>144,862,095</u>	<u>149,601,294</u>	<u>156,347,860</u>	<u>182,802,724</u>	<u>191,965,815</u>
Business-type activities:					
Nutrition services	4,326,269	4,328,968	4,370,253	-	-
Extended day care	3,829,475	4,111,643	4,230,932	-	-
Total business-type activities expenses	<u>8,155,744</u>	<u>8,440,611</u>	<u>8,601,185</u>	<u>-</u>	<u>-</u>
Total primary government expenses	<u>153,017,839</u>	<u>158,041,905</u>	<u>164,949,045</u>	<u>182,802,724</u>	<u>191,965,815</u>
Program Revenues					
Governmental activities:					
Charges for services:					
Direct instruction	841,942	1,022,049	1,152,943	1,260,425	1,308,087
Support services	3,263,591	3,390,229	3,357,085	10,328,932	10,585,801
Operating grants and contributions:					
Direct instruction	9,472,083	9,822,212	10,662,617	10,578,555	10,162,428
Support services	1,291,065	940,261	944,094	3,181,197	2,732,523
Total governmental activities program revenues	<u>14,868,681</u>	<u>15,174,751</u>	<u>16,116,739</u>	<u>25,349,109</u>	<u>24,788,839</u>
Business-type activities:					
Charges for services:					
Nutrition services	2,395,991	2,379,229	2,407,863	-	-
Extended day care	4,036,077	4,337,682	4,719,822	-	-
Operating grants and contributions:					
Nutrition services	1,726,855	1,778,437	1,775,706	-	-
Extended day care	43,558	18,925	13,234	-	-
Capital grants and contributions:					
Nutrition services	-	-	-	-	-
Extended day care	-	-	-	-	-
Total business-type activities program revenues	<u>8,202,481</u>	<u>8,514,273</u>	<u>8,916,625</u>	<u>-</u>	<u>-</u>
Total primary government revenues	<u>23,071,162</u>	<u>23,689,024</u>	<u>25,033,364</u>	<u>25,349,109</u>	<u>24,788,839</u>
Net (Expenses) Revenue					
Governmental activities	(129,993,414)	(134,426,543)	(140,231,121)	(157,453,615)	(167,176,976)
Business-type activities	46,737	73,662	315,440	-	-
Total primary government net expense	<u>\$(129,946,677)</u>	<u>\$(134,352,881)</u>	<u>\$(139,915,681)</u>	<u>\$(157,453,615)</u>	<u>\$(167,176,976)</u>

(a) Beginning July 1, 2014, business-type activities funds were reclassified as special revenue funds and are included in governmental activities.

ARAPAHOE COUNTY SCHOOL DISTRICT NUMBER SIX
General Revenues and Total Change in Net Position
Last Ten Fiscal Years
(Unaudited)

	Fiscal Year				
	2007	2008	2009	2010	2011
Net (Expenses) Revenue					
Governmental activities	\$ (127,272,502)	\$ (135,903,364)	\$ (138,564,320)	\$ (135,227,771)	\$ (121,387,006)
Business-type activities	252,398	88,276	(203,047)	(81,061)	235,405
Total primary government net expense	<u>(127,020,104)</u>	<u>(135,815,088)</u>	<u>(138,767,367)</u>	<u>(135,308,832)</u>	<u>(121,151,601)</u>
General Revenues and Other Changes in Net Position					
Governmental activities:					
Property taxes:					
Property taxes levied for general purposes	46,726,856	49,285,090	50,150,352	50,267,070	62,687,915
Property taxes levied for debt service	10,231,296	10,309,128	10,404,868	10,379,885	10,180,222
Specific ownership taxes	5,013,419	4,710,841	4,305,417	4,074,337	4,213,487
Intergovernmental revenue—unrestricted					
State equalization aid	62,956,656	63,169,216	65,609,900	67,164,756	58,533,506
Investment earnings	1,237,060	917,918	292,641	49,051	33,880
Other	1,090,871	1,668,398	1,343,775	1,529,984	1,415,363
Total governmental activities	<u>127,256,158</u>	<u>130,060,591</u>	<u>132,106,953</u>	<u>133,465,083</u>	<u>137,064,373</u>
Business-type activities:					
Investment earnings	109,805	90,727	28,477	13,606	7,247
Other	76,776	71,810	58,611	-	-
	<u>186,581</u>	<u>162,537</u>	<u>87,088</u>	<u>13,606</u>	<u>7,247</u>
Transfers In/(Out)					
Governmental activities	180,881	182,203	176,797	150,623	149,786
Business-type activities	(180,881)	(182,203)	(176,797)	(150,623)	(149,786)
Net transfers	<u>-</u>	<u>-</u>	<u>-</u>	<u>-</u>	<u>-</u>
Change in Net Position					
Governmental activities	164,537	(5,660,570)	(6,280,570)	(1,612,065)	15,827,153
Business-type activities	258,098	68,610	(292,756)	(218,078)	92,866
Total primary government change in net position	<u>\$ 422,635</u>	<u>\$ (5,591,960)</u>	<u>\$ (6,573,326)</u>	<u>\$ (1,830,143)</u>	<u>\$ 15,920,019</u>

(a) Beginning July 1, 2014, business-type activities funds were reclassified as special revenue funds and are included in governmental activities.

ARAPAHOE COUNTY SCHOOL DISTRICT NUMBER SIX
General Revenues and Total Change in Net Position
Last Ten Fiscal Years
(Unaudited)

	Fiscal Year				
	2012	2013	2014	2015 (a)	2016
Net (Expenses) Revenue					
Governmental activities	\$ (129,993,414)	\$ (134,426,543)	\$ (140,231,121)	\$ (157,453,615)	\$ (167,176,976)
Business-type activities	46,737	73,662	315,440	-	-
Total primary government net expense	<u>(129,946,677)</u>	<u>(134,352,881)</u>	<u>(139,915,681)</u>	<u>(157,453,615)</u>	<u>(167,176,976)</u>
General Revenues and Other Changes in Net Position					
Governmental activities:					
Property taxes:					
Property taxes levied for general purposes	60,839,693	61,187,557	62,352,507	61,600,095	68,066,334
Property taxes levied for debt service	10,168,244	10,734,463	10,927,873	10,882,156	12,871,720
Specific ownership taxes	4,605,805	4,953,385	5,254,030	5,675,945	6,049,245
Intergovernmental revenue—unrestricted					
State equalization aid	59,015,556	58,137,361	59,798,784	64,807,999	62,961,971
Investment earnings	50,898	69,676	84,479	197,283	532,626
Other	1,781,401	1,767,344	2,729,875	2,387,705	2,307,380
Total governmental activities	<u>136,461,597</u>	<u>136,849,786</u>	<u>141,147,548</u>	<u>145,551,183</u>	<u>152,789,276</u>
Business-type activities:					
Investment earnings	4,257	4,509	3,212	-	-
Other	-	-	-	-	-
	<u>4,257</u>	<u>4,509</u>	<u>3,212</u>	<u>-</u>	<u>-</u>
Transfers In/(Out)					
Governmental activities	1,021,684	214,308	172,878	-	-
Business-type activities	(1,021,684)	(214,308)	(172,878)	-	-
Net transfers	<u>-</u>	<u>-</u>	<u>-</u>	<u>-</u>	<u>-</u>
Change in Net Position					
Governmental activities	7,489,867	2,637,551	1,089,305	(11,902,432)	(14,387,700)
Business-type activities	(970,690)	(136,137)	145,774	-	-
Total primary government change in net position	<u>\$ 6,519,177</u>	<u>\$ 2,501,414</u>	<u>\$ 1,235,079</u>	<u>\$ (11,902,432)</u>	<u>\$ (14,387,700)</u>

(a) Beginning July 1, 2014, business-type activities funds were reclassified as special revenue funds and are included in governmental activities.

ARAPAHOE COUNTY SCHOOL DISTRICT NUMBER SIX
Governmental Funds, Fund Balances
Last Ten Fiscal Years
(Unaudited)

	Fiscal Year				
	2007 (a)	2008	2009	2010	2011 (b)
General Fund					
Reserved	\$ 5,873,314	\$ 6,256,226	\$ 6,305,988	\$ 6,205,892	\$ -
Unreserved	16,058,247	12,894,735	8,741,236	8,892,086	-
Nonspendable					678,758
Restricted	-	-	-	-	3,270,000
Committed	-	-	-	-	-
Assigned	-	-	-	-	18,818,804
Unassigned—unrestricted	-	-	-	-	7,909,800
Total general fund	<u>\$ 21,931,561</u>	<u>\$ 19,150,961</u>	<u>\$ 15,047,224</u>	<u>\$ 15,097,978</u>	<u>\$ 30,677,362</u>
All Other Governmental Funds					
Reserved	\$ 10,197,410	\$ 9,129,243	\$ 9,099,598	\$ 9,079,516	\$ -
Unreserved—reported in:					
Special revenue funds	928,581	1,148,953	1,538,118	1,049,009	-
Restricted	-	-	-	-	7,485,060
Committed	-	-	-	-	-
Assigned	-	-	-	-	3,240,554
Total all other governmental funds	<u>\$ 11,125,991</u>	<u>\$ 10,278,196</u>	<u>\$ 10,637,716</u>	<u>\$ 10,128,525</u>	<u>\$ 10,725,614</u>

	Fiscal Year				
	2012	2013	2014	2015	2016
General Fund					
Nonspendable	\$ 572,739	\$ 456,306	\$ 443,498	\$ 427,218	\$ 446,501
Restricted	4,050,000	4,080,000	4,210,000	4,350,000	4,490,000
Committed	1,510,984	1,307,024	881,852	1,144,012	1,278,391
Assigned	15,638,543	15,661,018	13,648,357	11,532,298	10,060,820
Unassigned—unrestricted	15,291,760	18,511,203	21,512,079	23,464,550	23,837,029
Total general fund	<u>\$ 37,064,026</u>	<u>\$ 40,015,551</u>	<u>\$ 40,695,786</u>	<u>\$ 40,918,078</u>	<u>\$ 40,112,741</u>
All Other Governmental Funds					
Restricted	\$ 7,477,587	\$ 9,458,686	\$ 57,237,608	\$ 57,224,602	\$ 39,731,290
Committed	3,460,591	2,482,956	3,457,585	5,240,909	6,006,081
Assigned	623,329	41,051	57,281	53,164	45,772
Total all other governmental funds	<u>\$ 11,561,507</u>	<u>\$ 11,982,693</u>	<u>\$ 60,752,474</u>	<u>\$ 62,518,675</u>	<u>\$ 45,783,143</u>

(a) Fiscal year 2007 General Fund reserved fund balance restated with risk management fund.

(b) Fiscal year 2011 GASB 54 was implemented with new fund balance classifications.

ARAPAHOE COUNTY SCHOOL DISTRICT NUMBER SIX
Governmental Funds, Revenues, Expenditures, and Debt Service Ratio
Last Ten Fiscal Years
(Unaudited)

	Fiscal Year									
	2007	2008	2009	2010	2011	2012	2013	2014	2015	2016
Revenues										
Property taxes	\$ 56,429,159	\$ 59,409,477	\$ 60,605,786	\$ 59,579,301	\$ 73,331,965	\$ 71,229,303	\$ 72,329,790	\$ 73,352,585	\$ 72,747,131	\$ 80,262,499
Specific ownership taxes	5,013,419	4,710,841	4,305,417	4,074,337	4,213,487	4,605,805	4,953,385	5,254,030	5,675,945	6,049,245
Federal grants	5,396,918	5,528,784	5,101,796	6,723,939	11,378,368	6,651,337	5,608,361	5,815,636	6,872,388	6,399,597
State equalization aid	62,956,656	63,169,216	65,609,900	67,164,756	58,533,506	59,015,556	58,137,361	59,798,784	64,807,999	62,961,971
State education of students with disabilities	2,705,967	2,735,510	2,804,475	2,544,431	2,386,480	2,359,541	2,203,301	2,660,109	2,521,840	2,584,084
Other state entitlements and state grants	1,614,968	1,218,359	1,560,632	1,991,842	1,366,971	1,260,317	1,750,487	1,962,229	2,386,031	2,484,178
Food Sales	-	-	-	-	-	-	-	-	1,999,699	2,013,244
Donated Commodities	-	-	-	-	-	-	-	-	233,715	246,190
Student Care	-	-	-	-	-	-	-	-	4,936,787	5,149,373
Pupil activities	2,299,063	2,086,329	1,953,966	2,052,885	2,176,936	2,225,653	2,276,984	2,152,485	2,181,150	2,178,587
Investment earnings	1,182,042	917,918	292,641	49,051	33,880	50,898	69,676	84,479	197,283	532,626
Other	2,954,342	3,654,562	3,253,153	4,091,621	4,491,787	4,826,419	5,102,963	6,256,155	6,119,286	6,032,967
Total revenues	140,552,534	143,430,996	145,487,766	148,272,163	157,913,380	152,224,829	152,432,308	157,336,492	170,679,254	176,894,561
Expenditures										
Instruction	80,228,224	83,672,420	87,039,262	84,305,829	81,303,127	82,334,769	84,062,986	87,143,475	90,180,055	92,505,891
Support services	45,813,337	49,325,272	49,637,651	51,613,989	48,167,507	50,048,640	52,299,833	55,286,415	65,630,762	68,491,757
Capital outlay	11,089,078	3,906,584	2,434,586	3,059,473	3,245,170	1,829,509	3,975,267	6,151,478	22,598,771	39,776,526
Debt service:										
Principal	6,313,540	5,110,395	5,217,990	5,332,499	7,081,540	6,756,041	5,639,530	7,340,000	5,210,000	5,475,000
Interest and fiscal charges	5,438,079	5,226,923	5,079,291	4,932,654	2,767,022	3,572,251	3,296,289	4,110,054	5,492,555	5,922,169
Bond issuance costs	-	-	-	-	521,935	-	-	363,993	174,525	152,621
Total expenditures	148,882,258	147,241,594	149,408,780	149,244,444	143,086,301	144,541,210	149,273,905	160,395,415	189,286,668	212,323,964
Other Financing Sources (Uses)										
Bonds issued	-	-	-	-	80,575,000	-	-	50,000,000	17,000,000	15,626,195
Premium	-	-	-	-	9,845,145	-	-	2,336,062	1,115,552	2,262,339
Payment to escrow agent	-	-	-	-	(89,893,721)	-	-	-	-	-
Capital lease proceeds	-	-	-	363,221	-	-	-	-	-	-
Transfers in	1,894,343	1,732,664	1,944,359	4,454,177	4,431,256	4,572,578	4,981,338	4,516,637	4,707,814	4,446,532
Transfers out	(1,658,445)	(1,550,461)	(1,767,562)	(4,303,554)	(4,281,470)	(4,360,456)	(4,767,030)	(4,343,759)	(4,707,814)	(4,446,532)
Total other financing sources (uses)	235,898	182,203	176,797	513,844	676,210	212,122	214,308	52,508,940	18,115,552	17,888,534
Net change in fund balances	\$ (8,093,826)	\$ (3,628,395)	\$ (3,744,217)	\$ (458,437)	\$ 15,503,289	\$ 7,895,741	\$ 3,372,711	\$ 49,450,017	\$ (491,862)	\$ (17,540,869)
Debt service as a percentage of noncapital expenditures	7.9%	7.0%	6.9%	6.9%	6.9%	7.1%	6.0%	7.4%	6.2%	5.7%

ARAPAHOE COUNTY SCHOOL DISTRICT NUMBER SIX
Assessed Value and Estimated Actual Value of Taxable Property
Last Ten Fiscal Years
(Unaudited)

Fiscal Year	Assessed Value (a)				Total Direct Tax Rate
	Residential Property	Commercial Property	Other Property (b)	Total Assessed Value	
2007	800,659,580	305,922,360	54,597,640	1,161,179,580	48.907
2008	881,802,980	323,318,360	73,275,340	1,278,396,680	46.791
2009	890,969,460	340,390,580	70,062,220	1,301,422,260	46.650
2010	865,370,050	387,833,150	75,739,390	1,328,942,590	46.081
2011	872,161,890	381,632,950	76,268,960	1,330,063,800	55.389
2012	819,038,730	366,325,340	74,199,570	1,259,563,640	57.530
2013	821,790,000	358,479,420	95,083,650	1,275,353,070	56.935
2014	832,105,700	363,033,982	100,413,100	1,295,552,782	56.984
2015	833,309,337	358,475,451	97,954,968	1,289,739,756	56.601
2016	1,012,764,913	404,052,769	95,202,784	1,512,020,466	53.424

The assessment rate, expressed as a percent of estimated actual value for all taxable property in Colorado, follows:

Year	Residential	Commercial	Base Year
2007	7.96%	29.00%	2006
2008	7.96%	29.00%	2007
2009	7.96%	29.00%	2008
2010	7.96%	29.00%	2009
2011	7.96%	29.00%	2010
2012	7.96%	29.00%	2011
2013	7.96%	29.00%	2012
2014	7.96%	29.00%	2013
2015	7.96%	29.00%	2014
2016	7.96%	29.00%	2015

- (a) Assessed and estimated actual taxable values are per the Arapahoe County Assessor's Office.
- (b) Other property includes vacant land, industrial, agricultural, state assessed, and oil and gas property.

Source: Arapahoe County Assessor's Office

ARAPAHOE COUNTY SCHOOL DISTRICT NUMBER SIX
Assessed Value and Estimated Actual Value of Taxable Property
Last Ten Fiscal Years
(Unaudited)

Fiscal Year	Estimated Actual Taxable Value (a)	Assessed Value as a Percent of Actual Taxable Value
2007	11,322,799,738	10.26%
2008	12,465,351,670	10.26%
2009	12,603,946,636	10.33%
2010	12,501,963,899	10.63%
2011	12,648,458,823	10.52%
2012	11,935,264,707	10.55%
2013	12,014,618,242	10.62%
2014	12,182,666,828	10.63%
2015	12,155,370,401	10.61%
2016	14,582,623,716	10.37%

(a) Assessed and estimated actual taxable values are per the Arapahoe County Assessor's Office.

(b) Other property includes vacant land, industrial, agricultural, state assessed, and oil and gas property.

Source: Arapahoe County Assessor's Office

ARAPAHOE COUNTY SCHOOL DISTRICT NUMBER SIX
Direct and Overlapping Property Tax Rates
Last Ten Fiscal Years
(Unaudited)

Collection Year	Arapahoe County School District Number Six			Overlapping Rates			Grand Totals (a)
	General Fund Millage	Bond Redemption Fund Millage	Total School District	Total Cities Millage	Total County Millage	Total Special Districts Millage	
2007	40.121	8.786	48.907	50.321	16.083	164.121	279.432
2008	38.697	8.094	46.791	46.436	15.217	140.689	249.133
2009	38.631	8.019	46.650	45.918	15.609	143.436	251.613
2010	38.211	7.870	46.081	46.442	15.672	149.763	257.958
2011	47.619	(b) 7.770	55.389	47.321	15.949	147.729	266.388
2012	49.286	8.244	57.530	48.643	17.316	149.824	273.313
2013	48.438	8.497	56.935	49.339	17.150	148.546	271.970
2014	48.487	8.497	56.984	50.986	17.130	134.853	259.953
2015	48.104	8.497	56.601	57.438	16.950	135.957	266.946
2016	44.927	8.497	53.424	54.599	14.856	128.855	251.734

(a) The grand total represents the gross millage of all taxing entities within the district boundaries. It is not representative of the mill levy assessed to an individual taxpayer.

(b) Increase in 2011 millage results from the 2010 override election.

Source: Arapahoe County Assessor's Office

ARAPAHOE COUNTY SCHOOL DISTRICT NUMBER SIX
Principal Property Taxpayers
Current Year and Nine Years Ago
(Unaudited)

2016		
Taxpayer	Assessed Valuation	Percent of Total Assessed Valuation of \$1,512,020,466
Qwest Corp.	\$ 27,058,500	1.79%
Public Service Co. of Colorado	18,332,820	1.21%
Southglenn Property Holdings, LLC	17,280,520	1.14%
National Digital Television	11,689,947	0.77%
NBC Facilities, Inc.	8,335,448	0.55%
Century Link Comm FKA Qwest Comm	6,985,650	0.46%
Aspen Grove Lifestyle Center	6,609,390	0.44%
Hillside Farms	6,172,360	0.41%
Renco Southbridge, LLC	6,024,218	0.40%
Cherry Creek Marketplace, LLC	5,821,460	0.39%
Totals	\$ 114,310,313	7.56%

2007		
Taxpayer	Assessed Valuation	Percent of Total Assessed Valuation of \$1,157,092,500
National Digital Television	\$ 16,226,490	1.40%
Qwest Corp.	10,321,200	0.89%
Public Service Co. of Colorado	9,530,140	0.82%
Cherry Hills Marketplace, LLC	8,699,990	0.75%
Aspen Grove Lifestyle	5,655,000	0.49%
Echostar Real Estate	3,936,010	0.34%
Fairways Plaza, LLC	3,770,000	0.33%
Sprint Spectrum, LP	3,661,240	0.32%
Renco Properties VIII	3,625,000	0.31%
M & J Investors, LLP	3,480,000	0.30%
Totals	\$ 68,905,070	5.96%

Source: Arapahoe County Assessor's Office

ARAPAHOE COUNTY SCHOOL DISTRICT NUMBER SIX
Property Tax Levies and Collections
Last Ten Calendar Years
(Unaudited)

Calendar Year	Taxes Levied for the Calendar Year	Collected Within the Fiscal Year of the Levy		Collections Subsequent to Fiscal Year End	Total Collections to Date	
		Amount (a)	Percentage of Levy		Amount	Percentage of Levy
2007	56,789,810	55,088,847	97.00%	1,484,748	56,573,595	99.62%
2008	59,817,459	57,918,863	96.83%	1,778,425	59,697,288	99.80%
2009	60,711,348	59,016,022	97.21%	1,524,572	60,540,594	99.72%
2010	61,239,003	58,453,415	95.45%	2,576,264	61,029,679	99.66%
2011	73,670,904	71,241,218	96.70%	816,258	72,057,476	97.81%
2012	72,462,697	69,817,937	96.35%	1,272,924	71,090,861	98.11%
2013	72,612,227	70,455,869	97.03%	1,103,038	71,558,907	98.55%
2014	73,827,075	71,732,754	97.16%	1,252,617	72,985,371	98.86%
2015	73,000,560	71,358,349	97.75%	1,094,819	72,453,168	99.25%
2016	80,778,181	78,786,108	97.53%	1,213,133 (b)	79,999,241	99.04%

- (a) Property taxes collection amounts are for current taxes only. In the financial statements, property taxes revenue also includes delinquent taxes and interest on current and delinquent taxes. Amounts reported on this schedule yield true percentages of levy.
- (b) Only July–August 2016 subsequent collections are known at this time.

ARAPAHOE COUNTY SCHOOL DISTRICT NUMBER SIX
Ratios of Outstanding Debt by Type
Last Ten Fiscal Years
(Unaudited)

Fiscal Year	Governmental Activities		Total Primary Government	Ratio of Debt to Actual Value (a)	Percentage of Personal Income (b)	Debt Per Capita (c)	Per Student (d)
	General Obligation Bonds	Capital Leases					
2007	111,480,000	209,774	111,689,774	8.74%	2.27%	1,162	7,032
2008	106,440,000	139,379	106,579,379	8.19%	2.19%	1,111	6,839
2009	101,300,000	61,389	101,361,389	7.63%	2.19%	1,062	6,545
2010	96,025,000	367,110	96,392,110	7.25%	2.11%	1,006	6,210
2011	89,245,000	245,571	89,490,571	7.10%	1.97%	973	5,771
2012	82,610,000	124,530	82,734,530	6.57%	1.76%	899	5,398
2013	84,668,188 (e)	-	84,668,188	6.64%	1.75%	919	5,482
2014	128,805,363	-	128,805,363	9.94%	2.48%	1,396	8,348
2015	140,803,526	-	140,803,526	10.92%	- (f)	1,525	9,222
2016	152,211,308	-	152,211,308	10.07%	- (f)	1,647	9,914

(a) See schedule on page 77 for assessed property value data.

(b) See schedule on page 86 for personal income data.

(c) See schedule on page 86 for estimated population data.

(d) See schedule on page 86 for October 1 School Enrollment data.

(e) Beginning in 2013, premium on bond sales is included in the General Obligation Bond amounts.

(f) Personal income data for Arapahoe County is not yet available from Bureau of Economic Analysis (BEA).

ARAPAHOE COUNTY SCHOOL DISTRICT NUMBER SIX
Ratios of General Bonded Debt Outstanding
Last Ten Fiscal Years
(Unaudited)

Fiscal Year	Governmental Activities		Less Debt Service Funds Available	Net Bonded Debt	Percentage of Estimated Actual Value of Taxable Property (a)	Percentage of Personal Income (b)	Debt Per Capita (c)	Per Student (d)
	General Obligation Bonds	Capital Leases						
2007	111,480,000	209,774	-	111,689,774	0.99%	2.27%	1,162	7,032
2008	106,440,000	139,379	-	106,579,379	0.86%	2.19%	1,111	6,839
2009	101,300,000	61,389	-	101,361,389	0.80%	2.19%	1,062	6,545
2010	96,025,000	367,110	-	96,392,110	0.77%	2.11%	1,006	6,210
2011	89,245,000	245,571	-	89,490,571	0.71%	1.97%	973	5,771
2012	82,610,000	124,530	-	82,734,530	0.69%	1.76%	899	5,398
2013	84,668,188 (e)	-	7,340,000 (f)	77,328,188	0.64%	1.60%	839	5,007
2014	128,805,363	-	5,210,000	123,595,363	1.01%	2.38%	1,340	8,011
2015	140,803,526	-	5,475,000	135,328,526	1.11%	-	(g) 1,466	8,863
2016	152,211,308	-	5,680,000	146,531,308	1.00%	-	(g) 1,585	9,544

- (a) See schedule on page 78 for estimated actual taxable property value data.
- (b) See schedule on page 86 for personal income data.
- (c) See schedule on page 86 for estimated population data.
- (d) See schedule on page 86 for October 1 School Enrollment data.
- (e) Beginning in 2013, premium on bond sales is included in the General Obligation Bond amounts.
- (f) Beginning in 2013, debt service funds available are included to calculate the net debt for primary government.
- (g) Personal income data for Arapahoe County is not yet available from Bureau of Economic Analysis (BEA).

ARAPAHOE COUNTY SCHOOL DISTRICT NUMBER SIX
Direct and Overlapping Governmental Activities Debt
June 30, 2016
(Unaudited)

<u>Name of Governmental Entity</u>	<u>Debt Amount Outstanding</u>	<u>Percent Applicable to District</u>	<u>Amount Applicable to District</u>
Overlapping Debt:			
Arapahoe Estates Water District	\$ 199,994	98.6%	\$ 197,130
Aspen Grove Business Improvement District	13,070,000	99.0%	13,004,354
Centennial Downs Metropolitan District	8,905,000	97.8%	8,710,597
City of Englewood	18,180,000	5.7%	1,044,952
Heritage Greens Metropolitan District	3,125,000	99.1%	3,095,763
Highline Business Improvement District	3,345,000	99.8%	3,339,326
Littleton Village Metro District #2	10,830,000	100.0%	10,828,336
Polo Reserve Metropolitan District	740,000	99.6%	737,351
South Suburban Metro Park & Recreation District	25,220,000	46.0%	11,607,217
Southglenn Metropolitan District	76,160,000	99.0%	75,379,494
Total overlapping debt	<u>159,774,994</u>		<u>127,944,520</u>
Direct Debt:			
Arapahoe County School District Number Six	<u>152,211,308</u>	100%	<u>152,211,308</u>
Totals	<u>\$ 311,986,302</u>		<u>\$ 280,155,828</u>

Note: Overlapping Debt is the proportionate share of the debts of local jurisdictions located wholly or in part within the limits of the Littleton Public Schools. The amount of debt applicable to Littleton Public Schools is computed by:

- 1) Determining what percentage of the total assessed value of the overlapping jurisdiction lies within the limits of the District, and
- 2) Applying this percentage to the total general obligation debt of the overlapping jurisdiction.

Source: Arapahoe County Assessor's Office, Arapahoe County Finance Office and City of Centennial Finance Office

ARAPAHOE COUNTY SCHOOL DISTRICT NUMBER SIX
 Legal Debt Margin Information
 Last Ten Fiscal Years
 (Unaudited)

Legal Debt Margin	
Calculation for Fiscal Year 2016	
Assessed valuation	\$ 1,512,020,466
Debt limit (20% of assessed value)	302,404,093
Debt applicable to limit	152,211,308
Legal debt margin	<u>\$ 150,192,785</u>

	Fiscal Year									
	2007	2008	2009	2010	2011	2012	2013	2014	2015	2016
Debt limit	\$ 232,235,916	\$ 255,679,336	\$ 260,284,452	\$ 265,788,518	\$ 266,012,760	\$ 251,912,728	\$ 255,070,614	\$ 259,110,556	\$ 257,947,951	\$ 302,404,093
Total net debt applicable to limit	111,480,000	106,440,000	101,300,000	96,025,000	89,245,000	82,610,000	77,095,000	128,805,363	140,803,526	\$152,211,308
Legal debt margin	<u>\$ 120,755,916</u>	<u>\$ 149,239,336</u>	<u>\$ 158,984,452</u>	<u>\$ 169,763,518</u>	<u>\$ 176,767,760</u>	<u>\$ 169,302,728</u>	<u>\$ 177,975,614</u>	<u>\$ 130,305,193</u>	<u>\$ 117,144,425</u>	<u>\$150,192,785</u>

Total net debt applicable to the limit as a percentage of debt limit	48.00%	41.63%	38.92%	36.13%	33.55%	32.79%	30.22%	49.71%	54.59%	50.33%
---	--------	--------	--------	--------	--------	--------	--------	--------	--------	--------

ARAPAHOE COUNTY SCHOOL DISTRICT NUMBER SIX
Demographic and Economic Statistics
Last Ten Fiscal Years
(Unaudited)

<u>Fiscal Year</u>	<u>Estimated Population (a)</u>	<u>Per Capita Personal Income (b)</u>	<u>Total Personal Income (thousands of \$)</u>	<u>October 1 School Enrollment</u>	<u>October 1 Official Pupil Count (c)</u>	<u>Unemployment Rate (d)</u>
2007	96,089	51,113	4,911,397	15,883	15,508	3.8%
2008	95,893	50,727	4,864,374	15,584	15,309	4.9%
2009	95,478	48,480	4,628,757	15,488	15,283	8.1%
2010	91,869 (e)	47,622	4,374,986	15,521	15,157	8.8%
2011	91,962	49,299	4,533,635	15,506	15,055	8.5%
2012	92,056	51,163	4,709,861	15,328	14,928	7.8%
2013	92,151	52,437	4,832,122	15,445	14,882	6.5%
2014	92,244	56,294	5,192,784	15,429	14,858	4.9%
2015	92,338	- (f)	- (f)	15,269	14,800	3.6%
2016	92,432	- (f)	- (f)	15,353	14,785	- (g)

Sources:

- (a) Population data present from DRCOG.
- (b) Bureau of Economic Analysis (BEA), U.S. Department of Commerce, reporting Arapahoe County, CO.
- (c) Average funded pupil count is determined from number of full-time equivalents of pupil enrollment and averaged over the last five years.
- (d) Bureau of Labor Statistics (BLS) for Arapahoe County, Colorado.
- (e) Data presented from fiscal year 2010 uses a new calculation of Estimated Population supported by Denver Regional Council of Governments (DRCOG).
- (f) Personal income data is not yet available from BEA.
- (g) Unemployment not available from BLS.

ARAPAHOE COUNTY SCHOOL DISTRICT NUMBER SIX
Principal Employers
Current Year and Nine Years Ago
(Unaudited)

	2016			2007		
	Rank	Employees (a)	Percentage of Employment (b)	Rank	Employees (a)	Percentage of Employment (b)
Century Link (formerly Qwest)	1	1,663	7.00%	1	1,950	7.75%
Littleton Public Schools	2	1,562	(c) 6.57%	2	1,619	(c) 6.43%
Dish Network (EchoStar)	3	1,543	6.49%	3	1,175	4.67%
Littleton Adventist Hospital	4	1,243	5.23%	4	1,020	4.05%
Arapahoe Community College	5	632	2.66%	-	-	-
Arapahoe County	6	522	2.20%	5	522	2.07%
Republic National Distributing	7	481	2.02%	-	-	-
City of Littleton	8	437	1.84%	6	403	1.60%
McDonald Volkswagon-Audi	9	396	1.67%	-	-	-
Center Point	10	320	1.35%	-	-	-
Globus	-	-	-	-	-	-
Norgren	-	-	-	9	325	1.29%
National Distribution	-	-	-	10	300	1.19%
Ralph Schomp	-	-	-	8	369	1.47%
Riviera Electric	-	-	-	-	-	-
Lockhead Martin Space Systems	-	-	-	7	370	1.47%

Note: Total employment for the City of Littleton in 2015 was 23,772 and for 2007 was 25,172 per the Bureau of Labor Statics Data.

Source:

(a) City of Littleton 2015 Comprehensive Annual Financial Report

(b) Bureau of Labor Statistics Data

(c) Littleton Public Schools provided Employee Data

ARAPAHOE COUNTY SCHOOL DISTRICT NUMBER SIX
Full-Time Equivalent District General Fund Employees by Type
Last Ten Fiscal Years
(Unaudited)

	Full-Time Equivalent Employees as of June 30									
	2007	2008	2009	2010	2011	2012 (a)	2013	2014	2015	2016
Instruction										
Teachers	991.2	985.4	968.2	938.8	885.0	861.5	864.3	873.6	888.5	900.6
Paraprofessionals	191.6	186.7	195.2	184.5	183.8	241.4	251.6	265.3	260.9	256.3
Total instruction	1,182.8	1,172.1	1,163.4	1,123.3	1,068.8	1,102.9	1,115.9	1,138.9	1,149.4	1,156.9
Support services										
Administrators	72.7	74.4	75.6	70.5	64.4	59.4	59.2	61.6	61.0	61.7
Professional/Technical support	28.9	34.7	32.8	30.3	30.4	33.0	34.7	35.4	37.9	38.3
Bus drivers	50.0	50.0	48.5	48.5	48.5	51.5	51.5	53.0	53.5	53.0
Clerical/Other classified	151.1	152.1	148.0	145.2	141.0	117.8	113.6	111.7	121.9	125.9
Custodians	94.0	94.4	95.0	92.2	84.2	88.5	90.8	90.4	90.7	90.6
Maintenance	39.7	38.7	39.7	38.2	37.6	36.5	36.5	36.5	36.0	35.5
Total support services	436.4	444.3	439.6	424.9	406.1	386.7	386.3	388.6	401.0	405.0
Grand total	1,619.2	1,616.4	1,603.0	1,548.2	1,474.9	1,489.6	1,502.2	1,527.5	1,550.4	1,561.9

(a) Beginning with fiscal year 2011–2012, the District's full-time equivalent definition/calculation changed through the implementation of a new human resources/payroll management system. Fiscal year 2011–2012 staffing numbers are not comparable to previous years.

Source: Budget data

ARAPAHOE COUNTY SCHOOL DISTRICT NUMBER SIX
Operating Statistics
Last Ten Fiscal Years
(Unaudited)

Fiscal Year	Enrollment	Operating Expenditures	Cost		Expenditures	Cost Per Pupil	Percentage Change	Teaching Staff	Pupil-Teacher Ratio	Percentage of Students Receiving Free or Reduced-Price Meals
			Per Pupil	Percentage Change						
2007	15,883	126,041,561	7,936	4.05%	141,158,514	8,887	4.12%	991.2	16	16.2%
2008	15,584	132,997,692	8,534	7.54%	149,458,510	9,591	7.91%	985.4	16	17.2%
2009	15,488	136,676,913	8,825	3.40%	151,894,567	9,807	2.26%	968.2	16	17.5%
2010	15,521	135,919,818	8,757	-0.77%	152,061,036	9,797	-0.10%	938.8	17	19.5%
2011	15,506	129,470,634	8,350	-4.65%	141,850,059	9,148	-6.62%	885.0	18	21.5%
2012	15,328	131,351,767	8,569	2.63%	144,817,541	9,448	3.28%	867.2	18	23.3%
2013	15,445	136,362,819	8,829	3.03%	149,601,294	9,686	2.52%	871.0	18	23.5%
2014	15,429	142,429,890	9,231	4.56%	156,347,860	10,133	4.62%	873.6	18	24.2%
2015	15,269	155,810,817	10,204	10.54%	182,802,724	11,972	18.15%	888.5	17	20.5%
2016	15,353	160,997,648	10,486	2.76%	191,965,815	12,503	4.44%	900.6	17	19.3%

ARAPAHOE COUNTY SCHOOL DISTRICT NUMBER SIX
Schedule of Insurance
June 30, 2016
(Unaudited)

<u>Description of Insurance</u>	<u>Carrier or Pool</u>	<u>Coverages</u>	<u>Deductible or Retention</u>
General liability and School Leaders Errors and Omissions	Excess-of-Loss Self-Insurance Pool (ELSIP)	\$5,000,000 limit	\$150,000
Property—including boiler and machinery	Travelers Insurance	\$353,445,454	\$25,000
Automobile liability	Excess-of-Loss Self-Insurance Pool (ELSIP)	\$5,000,000 limit	\$150,000
Crime	Travelers Insurance	\$1,000,000	\$25,000
Fiduciary liability	Travelers Insurance	\$1,000,000	\$10,000
Worker's Compensation	Joint School Districts' Worker's Compensation Pool	\$1,000,000	\$450,000
Specialty Risk Prfotector AKA: Cyber	Illinois National Insurance Company	\$1,000,000	\$50,000

ARAPAHOE COUNTY SCHOOL DISTRICT NUMBER SIX

Facilities Statistics

June 30, 2016

(Unaudited)

Schools

Elementary & Preschool

Buildings	16
Square feet	759,559
Capacity	7,288
Enrollment	6,011

Middle

Buildings	4
Square feet	507,232
Capacity	3,232
Enrollment	3,019

High

Buildings	4
Square feet	809,174
Capacity	5,707
Enrollment	5,280

Administration

Buildings	1
Square feet	103,190

Transportation

Buildings	1
Square feet	23,385

Athletics

Athletics stadium	1
Football fields	4
Soccer fields	5
Running tracks	7
Swimming pools	3
Playgrounds	20

Note: Statistical section schedules normally present ten years of data.

Only one year of statistics is presented here because the number of facilities, size and capacity are essentially unchanged over that period.

Source: *Capacity Utilization Report, 2006 and 2012*, prepared by Littleton Public Schools Operations/Maintenance Department, together with fiscal year 2015 actual enrollments applicable to the school building listed. Charter schools' enrollment sums are excluded.

COMPLIANCE SECTION





**INDEPENDENT AUDITORS' REPORT ON INTERNAL CONTROL OVER
FINANCIAL REPORTING AND ON COMPLIANCE AND OTHER MATTERS
BASED ON AN AUDIT OF FINANCIAL STATEMENTS PERFORMED IN
ACCORDANCE WITH GOVERNMENT AUDITING STANDARDS**

Board of Education
Arapahoe County School District Number Six
Littleton, Colorado

We have audited, in accordance with the auditing standards generally accepted in the United States of America and the standards applicable to financial audits contained in *Government Auditing Standards* issued by the Comptroller General of the United States, the financial statements of the governmental activities, each major fund, the aggregate discretely presented component units, and the aggregate remaining fund information of Arapahoe County School District Number Six, as of and for the year ended June 30, 2016, and the related notes to the financial statements, which collectively comprise Arapahoe County School District Number Six's basic financial statements, and have issued our report thereon dated October 14, 2016.

Internal Control Over Financial Reporting

In planning and performing our audit of the financial statements, we considered Arapahoe County School District Number Six's internal control over financial reporting (internal control) to determine the audit procedures that are appropriate in the circumstances for the purpose of expressing our opinions on the financial statements, but not for the purpose of expressing an opinion on the effectiveness of Arapahoe County School District Number Six's internal control. Accordingly, we do not express an opinion on the effectiveness of Arapahoe County School District Number Six's internal control.

A *deficiency in internal control* exists when the design or operation of a control does not allow management or employees, in the normal course of performing their assigned functions, to prevent, or detect and correct, misstatements on a timely basis. A *material weakness* is a deficiency, or a combination of deficiencies, in internal control, such that there is a reasonable possibility that a material misstatement of the entity's financial statements will not be prevented, or detected and corrected on a timely basis. A *significant deficiency* is a deficiency, or a combination of deficiencies, in internal control that is less severe than a material weakness, yet important enough to merit attention by those charged with governance.

Our consideration of internal control was for the limited purpose described in the first paragraph of this section and was not designed to identify all deficiencies in internal control that might be material weaknesses or significant deficiencies. Given these limitations, during our audit we did not identify any deficiencies in internal control that we consider to be material weaknesses or significant deficiencies. However, material weaknesses may exist that have not been identified.

Compliance and Other Matters

As part of obtaining reasonable assurance about whether Arapahoe County School District Number Six's financial statements are free from material misstatement, we performed tests of its compliance with certain provisions of laws, regulations, contracts, and grant agreements, noncompliance with which could have a direct and material effect on the determination of financial statement amounts. However, providing an opinion on compliance with those provisions was not an objective of our audit, and accordingly, we do not express such an opinion. The results of our tests disclosed no instances of noncompliance or other matters that are required to be reported under *Government Auditing Standards*.

Purpose of this Report

The purpose of this report is solely to describe the scope of our testing of internal control and compliance and the result of that testing, and not to provide an opinion on the effectiveness of the entity's internal control or on compliance. This report is an integral part of an audit performed in accordance with *Government Auditing Standards* in considering the entity's internal control and compliance. Accordingly, this communication is not suitable for any other purpose.



CliftonLarsonAllen LLP

Greenwood Village, Colorado
October 14, 2016



CliftonLarsonAllen

INDEPENDENT AUDITORS' REPORT ON COMPLIANCE FOR EACH MAJOR FEDERAL PROGRAM AND REPORT ON INTERNAL CONTROL OVER COMPLIANCE REQUIRED BY THE UNIFORM GUIDANCE

Board of Education
Arapahoe County School District Number Six
Littleton, Colorado

Report on Compliance for Each Major Federal Program

We have audited Arapahoe County School District Number Six's compliance with the types of compliance requirements described in the *OMB Compliance Supplement* that could have a direct and material effect on Arapahoe County School District Number Six's major federal program for the year ended June 30, 2016. Arapahoe County School District Number Six's major federal program is identified in the summary of auditors' results section of the accompanying schedule of findings and questioned costs.

Management's Responsibility

Management is responsible for compliance with the requirements of laws, regulations, contracts, and grants applicable to its federal programs.

Auditors' Responsibility

Our responsibility is to express an opinion on compliance for each of Arapahoe County School District Number Six's major federal program based on our audit of the types of compliance requirements referred to above. We conducted our audit of compliance in accordance with auditing standards generally accepted in the United States of America; the standards applicable to financial audits contained in *Government Auditing Standards*, issued by the Comptroller General of the United States; and the audit requirements of Title 2 U.S. *Code of Federal Regulations* Part 200, *Uniform Administrative Requirements, Cost Principles, and Audit Requirements for Federal Awards* (Uniform Guidance). Those standards and the Uniform Guidance require that we plan and perform the audit to obtain reasonable assurance about whether noncompliance with the types of compliance requirements referred to above that could have a direct and material effect on a major federal program occurred. An audit includes examining, on a test basis, evidence about Arapahoe County School District Number Six's compliance with those requirements and performing such other procedures as we considered necessary in the circumstances.

We believe that our audit provides a reasonable basis for our opinion on compliance for the major federal program. However, our audit does not provide a legal determination of Arapahoe County School District Number Six's compliance.

Opinion on Each Major Federal Program

In our opinion, Arapahoe County School District Number Six complied, in all material respects, with the types of compliance requirements referred to above that could have a direct and material effect on the major federal program for the year ended June 30, 2016.

Report on Internal Control Over Compliance

Management of Arapahoe County School District Number Six is responsible for establishing and maintaining effective internal control over compliance with the types of compliance requirements referred to above. In planning and performing our audit of compliance, we considered Arapahoe County School District Number Six's internal control over compliance with the types of requirements that could have a direct and material effect on the major federal program to determine the auditing procedures that are appropriate in the circumstances for the purpose of expressing an opinion on compliance for the major federal program and to test and report on internal control over compliance in accordance with the Uniform Guidance, but not for the purpose of expressing an opinion on the effectiveness of internal control over compliance. Accordingly, we do not express an opinion on the effectiveness of Arapahoe County School District Number Six's internal control over compliance.

A deficiency in internal control over compliance exists when the design or operation of a control over compliance does not allow management or employees, in the normal course of performing their assigned functions, to prevent, or detect and correct, noncompliance with a type of compliance requirement of a federal program on a timely basis. A *material weakness in internal control over compliance* is a deficiency, or combination of deficiencies, in internal control over compliance, such that there is a reasonable possibility that material noncompliance with a type of compliance requirement of a federal program will not be prevented, or detected and corrected, on a timely basis. A *significant deficiency in internal control over compliance* is a deficiency, or a combination of deficiencies, in internal control over compliance with a type of compliance requirement of a federal program that is less severe than a material weakness in internal control over compliance, yet important enough to merit attention by those charged with governance.

Our consideration of internal control over compliance was for the limited purpose described in the first paragraph of this section and was not designed to identify all deficiencies in internal control over compliance that might be material weaknesses or significant deficiencies. We did not identify any deficiencies in internal control over compliance that we consider to be material weaknesses. However, material weaknesses may exist that have not been identified.

The purpose of this report on internal control over compliance is solely to describe the scope of our testing of internal control over compliance and the result of that testing based on the requirements of the Uniform Guidance. Accordingly, this report is not suitable for any other purpose.



CliftonLarsonAllen LLP

Greenwood Village, Colorado
October 14, 2016

**ARAPAHOE COUNTY SCHOOL DISTRICT NUMBER SIX
SCHEDULE OF FINDINGS AND QUESTIONED COSTS
For the Year Ended June 30, 2016**

Section I – Summary of Auditors’ Results

Financial Statements

Type of auditors’ report issued: Unmodified

Internal control over financial reporting:

- Material weakness(es) identified? yes no
- Significant deficiency(ies) identified that are not considered to be material weaknesses? yes none reported

Noncompliance material to financial statements noted? yes no

Federal Awards

Internal control over major programs:

- Material weakness(es) identified? yes no
- Significant deficiency(ies) identified that are not considered to be material weakness(es)? yes none reported

Type of auditors’ report issued on compliance for major program: Unmodified

Any audit findings disclosed that are required to be reported in accordance with 2 CFR 200.516(a)? yes no

Identification of major program:

<u>CFDA Number(s)</u>	<u>Name of Federal Program or Cluster</u>
10.553, 10.555, 10.559	Nutrition Cluster

Dollar threshold used to distinguish between type A and type B programs \$750,000

Auditee qualified as low-risk auditee? yes no

**ARAPAHOE COUNTY SCHOOL DISTRICT NUMBER SIX
SCHEDULE OF FINDINGS AND QUESTIONED COSTS
For the Year Ended June 30, 2016**

SECTION II – FINDINGS RELATED TO FINANCIAL STATEMENTS

None

SECTION III – FEDERAL AWARD FINDINGS AND QUESTIONED COSTS

None

SECTION IV – PRIOR YEAR FINDINGS

Finding 2015-001 CFDA 10.553, 10.555 and 10.559 – Nutrition Cluster

**Eligibility
Significant Deficiency**

Summary: During our testing over forty individuals considered eligible for the Nutrition program, we noted one instance in which system users have the ability to submit applications without proper review over the application. We also noted one instance where the application did not document and outline the individual's income and number of family members.

Status: During this year's testing of eligibility, we determined that corrective action was implemented. No similar findings were noted during the current year audit.

This page left blank and
unnumbered intentionally
for presentation purposes



ARAPAHOE COUNTY SCHOOL DISTRICT NUMBER SIX
Schedule of Expenditures of Federal Awards
For the Fiscal Year Ended June 30, 2016

Federal Agencies/Pass-Through Grantor/Program Title	Federal CFDA Number
U.S. DEPARTMENT OF EDUCATION	
Passed through the State of Colorado Department of Education:	
Title I, Part A, Grants to Local Educational Agencies (LEAs)—General Fund	84.010
Title I, Part A, Grants to Local Educational Agencies (LEAs)—Grant Fund	84.010
Title I, Part G, Advanced Placement for Disadvantaged Students	84.330
Title II, Part A, Improving Teacher Quality State Grants	84.367
Title III, Part A, English Language Acquisition Language Grants	84.365
Total Title	
Special Education—Grants to States (IDEA, Part B)	84.027
Special Education—Early Literacy PK-3 (IDEA, Part B)	84.027
Special Education—Preschool Grants (IDEA Preschool)	84.173
Total Special Education Cluster	
Passed through the State of Colorado Department of Human Services:	
Rehabilitation Services—Vocational Rehabilitation	84.126
Passed through the Colorado Community College System:	
Career and Technical Education	84.048
Total	
Total U.S. Department of Education	
U.S. DEPARTMENT OF HEALTH AND HUMAN SERVICES	
Passed through Arapahoe County School District No. 2 (Sheridan):	
Head Start	93.600
U.S. DEPARTMENT OF AGRICULTURE	
Passed through the State of Colorado Department of Education:	
School Breakfast Program	10.553
National School Lunch Program	10.555
Summer Food Service Program for Children	10.559
Passed through the State of Colorado Department of Human Services:	
Food Distribution, Commodities	10.555
Total USDA Cluster	
School Fresh Fruit & Vegetable	10.582
Total U.S. Department of Agriculture Reported in the Nutrition Services Fund	
Totals	

See Notes to the Schedule of Expenditures of Federal Awards.

ARAPAHOE COUNTY SCHOOL DISTRICT NUMBER SIX
Schedule of Expenditures of Federal Awards
For the Fiscal Year Ended June 30, 2016

Pass Through Entity Grant Number	Accrued (Deferred) Revenue July 1, 2015	Cash/ Inventory Receipts	Expenditures	Accrued (Deferred) Revenue June 30, 2016	Pass To Subrecipient
4010	\$ 260,341	\$ 1,161,111	\$ 1,028,308	\$ 127,538	\$ -
4010	25,144	176,407	167,669	16,406	-
5330	-	490	490	-	-
4367	92,804	445,877	398,188	45,115	-
4365	20,500	64,206	49,364	5,658	-
	<u>398,789</u>	<u>1,848,091</u>	<u>1,644,019</u>	<u>194,717</u>	<u>-</u>
4027	323,568	1,844,856	2,345,906	824,618	-
5027	-	19,653	19,653	-	-
4173	1,103	46,478	65,431	20,056	-
	<u>324,671</u>	<u>1,910,987</u>	<u>2,430,990</u>	<u>844,674</u>	<u>-</u>
	39,102	206,338	223,055	55,819	-
	36,531	104,334	100,639	32,836	-
	<u>799,093</u>	<u>4,069,750</u>	<u>4,398,703</u>	<u>1,128,046</u>	<u>-</u>
	<u>150,027</u>	<u>346,300</u>	<u>286,475</u>	<u>90,202</u>	<u>-</u>
4553	-	225,598	225,598	-	-
4555	-	1,136,475	1,136,475	-	-
4559	17,974	36,152	41,784	23,606	-
4555	<u>-</u>	<u>246,190</u>	<u>246,190</u>	<u>-</u>	<u>-</u>
	17,974	1,644,415	1,650,047	23,606	-
4582	<u>-</u>	<u>14,332</u>	<u>14,332</u>	<u>-</u>	<u>-</u>
	<u>17,974</u>	<u>1,658,747</u>	<u>1,664,379</u>	<u>23,606</u>	<u>-</u>
	<u>\$ 967,094</u>	<u>\$ 6,074,797</u>	<u>\$ 6,349,557</u>	<u>\$ 1,241,854</u>	<u>\$ -</u>

ARAPAHOE COUNTY SCHOOL DISTRICT NUMBER SIX
Note to the Schedule of Expenditures of Federal Awards
June 30, 2016

NOTE 1: Basis of Presentation

The accompanying schedule of expenditures of federal awards includes the federal grant activity of the Arapahoe County School District Number Six, Colorado, and is presented on the modified accrual basis of accounting. The information in this schedule is presented in accordance with the requirements of 2CFR Part 200, Uniform Administrative Requirements, Cost Principles, and Audit Requirements for Federal Awards (Uniform Guidance). Therefore, some amounts presented in this schedule may differ from amounts presented in, or used in the presentation of, the basic financial statements

NOTE 2: Significant Accounting Policies

Revenue from federal awards is recognized when the District has done everything necessary to establish its right to revenue. For governmental funds, revenue from federal grants is recognized when it becomes both measurable and available. Expenditures of federal awards are recognized in the accounting period when the liability is incurred. The District has elected to not use the 10 percent de minimis indirect cost rate as allowed under the Uniform Guidance.

NOTE 3: Noncash Federal Awards

Commodities donated to the District by the U.S. Department of Agriculture (USDA) of \$246,190 are valued based on the USDA's Donated Commodity Price List. These are shown as part of the National School Lunch program (10.555).



Colorado Department of Education
Auditors Integrity Report
 District: 0140 - LITTLETON 6
 Fiscal Year 2015-16
 Colorado School District/BOCES

Revenues, Expenditures, & Fund Balance by Fund

Fund Type & Number	Beg Fund Balance & Prior Per Adj (6880*)	+	1000 - 5999 Total Revenues & Other Sources	0001-0999 Total Expenditures & Other Uses	=	6700-6799 & Prior Per Adj (6880*) Ending Fund Balance
Governmental						
10 General Fund	39,666,066		134,289,846	135,229,562		38,726,350
18 Risk Mgmt Sub-Fund of General Fund	1,252,012		2,049,359	1,914,980		1,386,391
19 Colorado Preschool Program Fund	0		0	0		0
Sub-Total	40,918,078		136,339,204	137,144,542		40,112,741
11 Charter School Fund	3,823,571		8,932,801	8,568,153		4,188,219
2026-29 Special Revenue Fund	1,327,678		4,977,944	4,664,403		1,641,219
21 Food Service Spec Revenue Fund	1,155,566		3,839,778	3,902,387		1,092,957
22 Govt Designated-Purpose Grants Fund	0		4,629,715	4,629,715		0
23 Pupil Activity Special Revenue Fund	1,302,885		4,013,307	4,111,367		1,204,824
24 Full Day Kindergarten Mill Levy Override	0		0	0		0
25 Transportation Fund	0		0	0		0
31 Bond Redemption Fund	9,180,321		12,771,076	11,397,169		10,554,228
39 Certificate of Participation (COP) Debt Service Fund	0		0	0		0
41 Building Fund	46,888,715		18,293,662	37,098,272		28,084,104
42 Special Building Fund	0		0	0		0
43 Capital Reserve Capital Projects Fund	2,663,510		2,914,408	2,372,108		3,205,810
Totals	107,260,325		196,711,895	213,888,116		90,084,103
Proprietary						
50 Other Enterprise Funds	0		0	0		0
64 (63) Risk-Related Activity Fund	0		0	0		0
60.65-69 Other Internal Service Funds	0		0	0		0
Totals	0		0	0		0
Fiduciary						
70 Other Trust and Agency Funds	0		0	0		0
72 Private Purpose Trust Fund	0		0	0		0
73 Agency Fund	0		0	0		0
74 Pupil Activity Agency Fund	246,978		592,440	432,982		406,436
79 GASB 34/Permanent Fund	0		0	0		0
85 Foundations	0		0	0		0
Totals	246,978		592,440	432,982		406,436
FINAL						

*If you have a prior period adjustment in any fund (Balance Sheet 6880), the amount of your prior period adjustment is added into both your ending and beginning fund balances on this report.