

± 20 ACRES AT FARMINGTON STATION

FARMINGTON, UT | DAVIS COUNTY



LOCATION	334 N Innovator Drive, Farmington, Utah
SIZE	±20.357 Acres 886,749 sq. ft.
PARCEL	086960005
PRICE	\$22,168,725

CONTACT FOR MORE INFORMATION

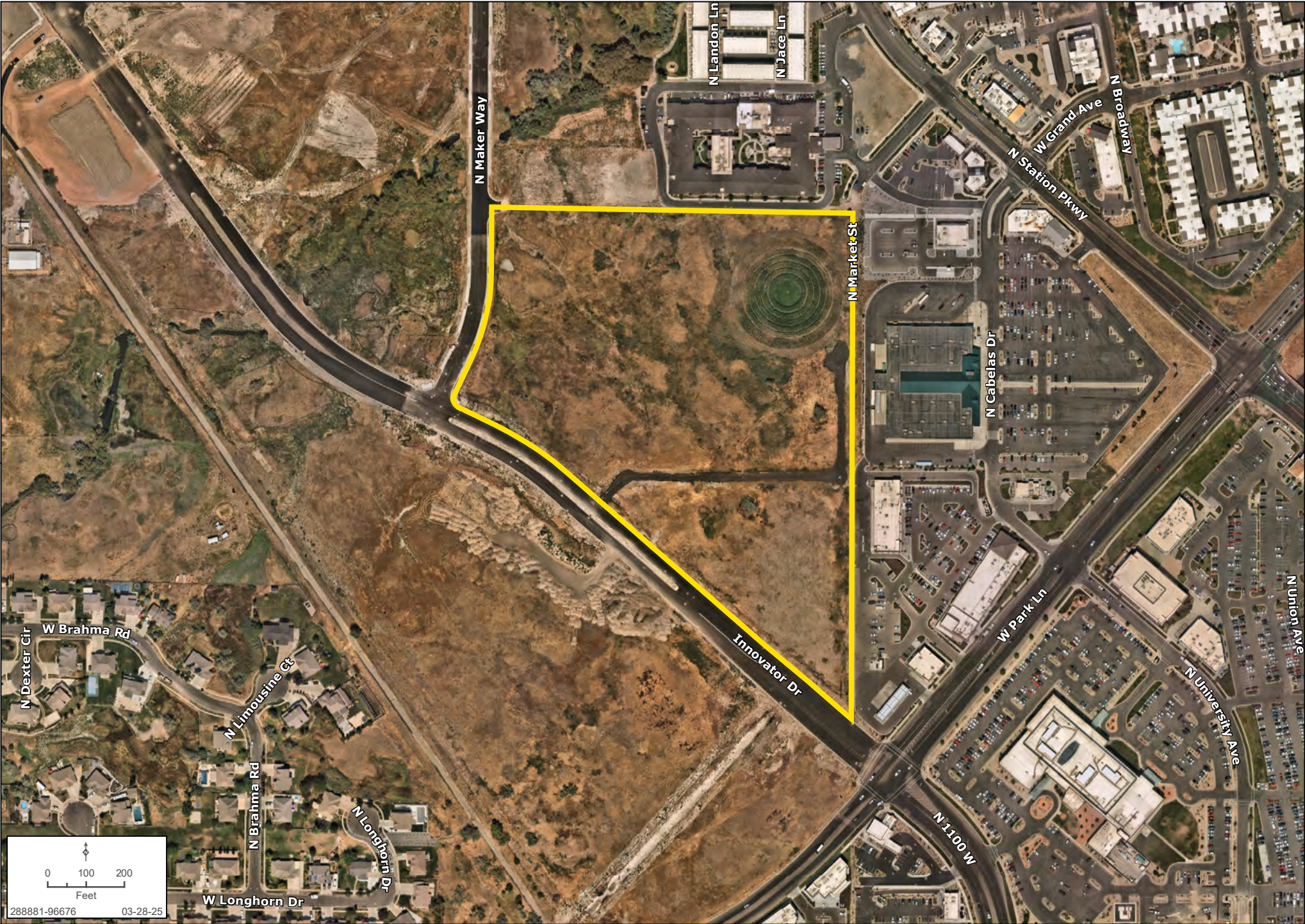
Zachary Hartman
zhartman@landadvisors.com
801.704.1627

 Land Advisors[®]
ORGANIZATION

801.704.1627 | LandAdvisors.com

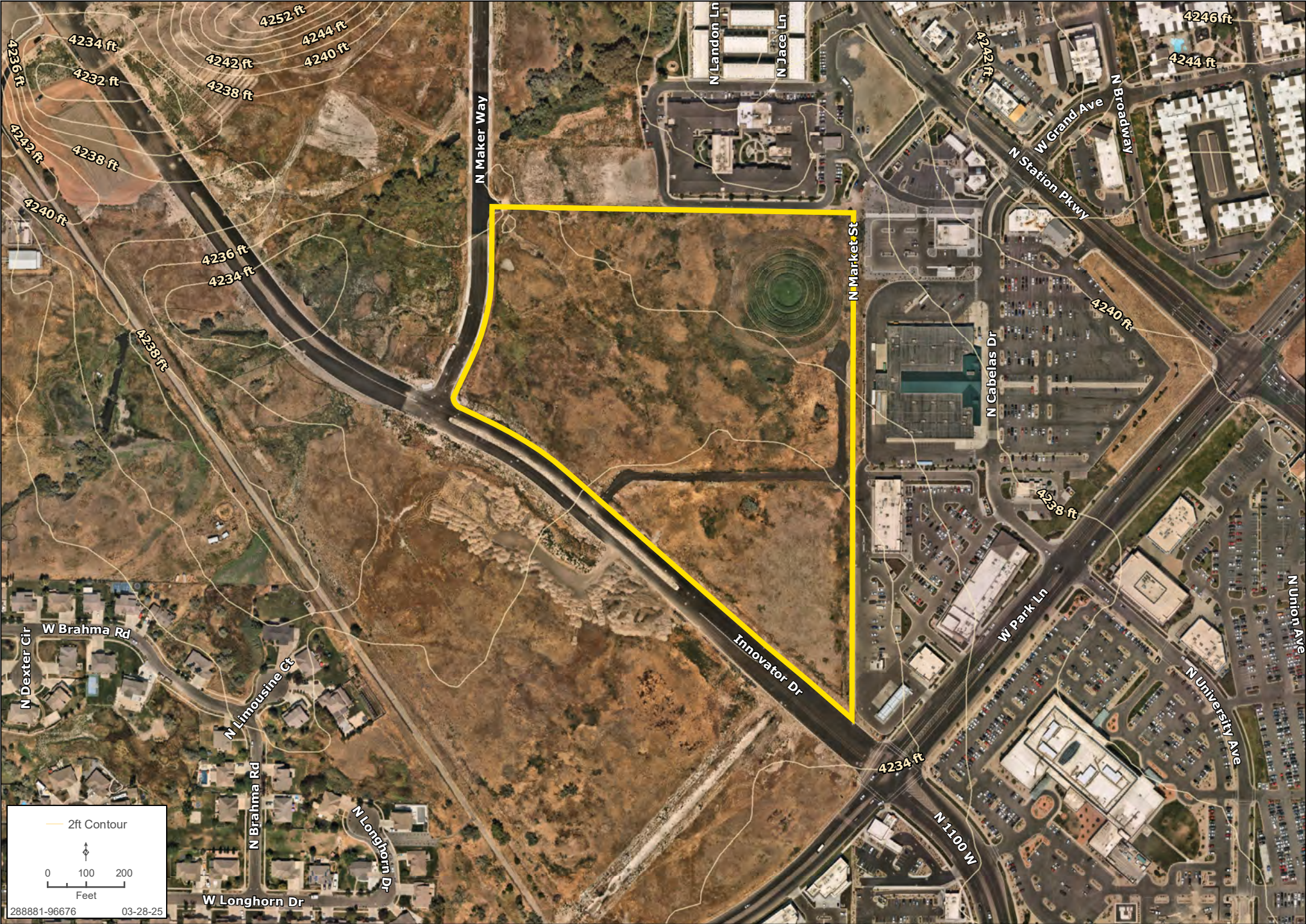
DETAIL | LOT 5 FARMINGTON

Zachary Hartman | 801.704.1626 | landadvisors.com



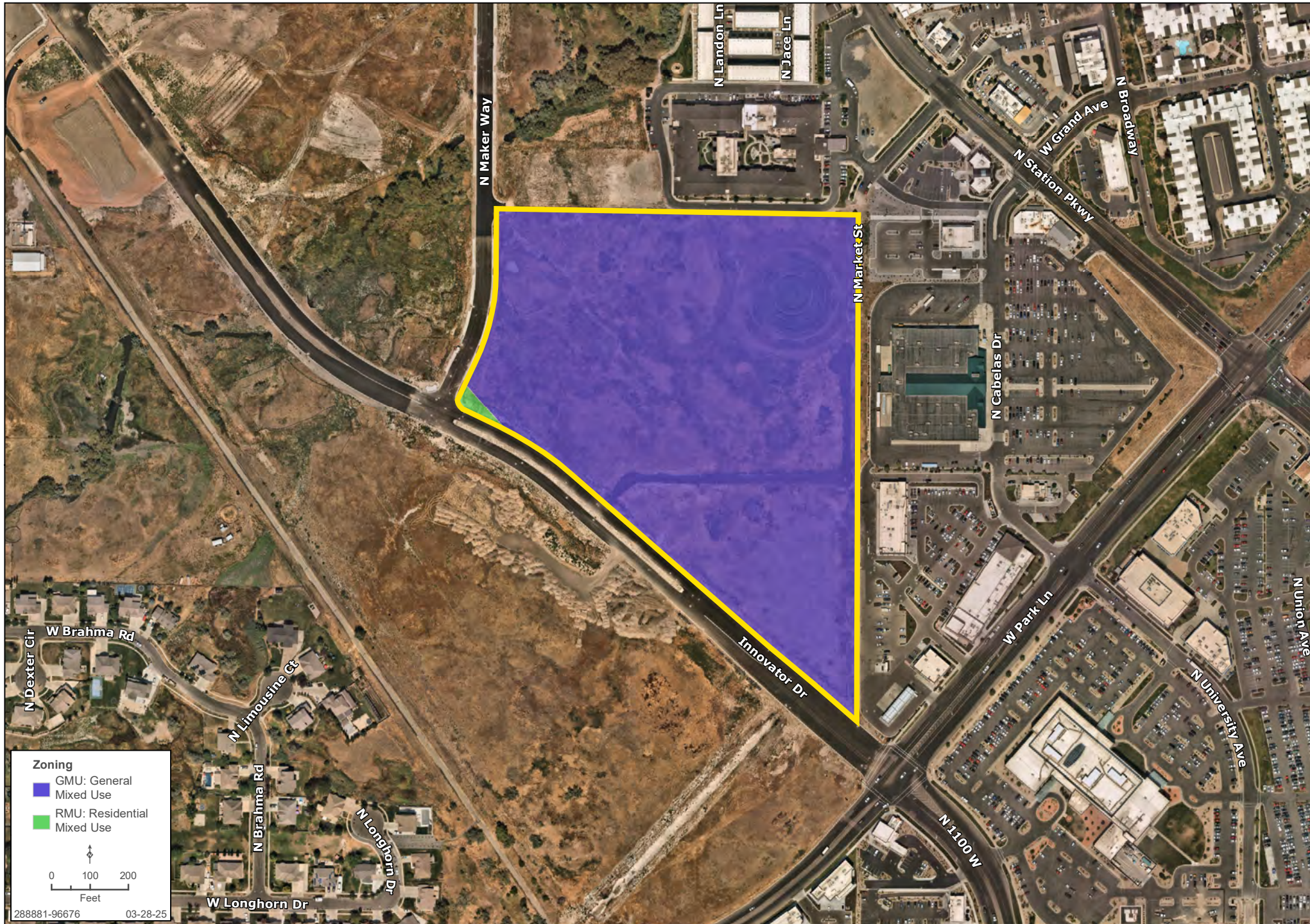
CONTOUR | LOT 5 FARMINGTON

Zachary Hartman | 801.704.1626 | landadvisors.com



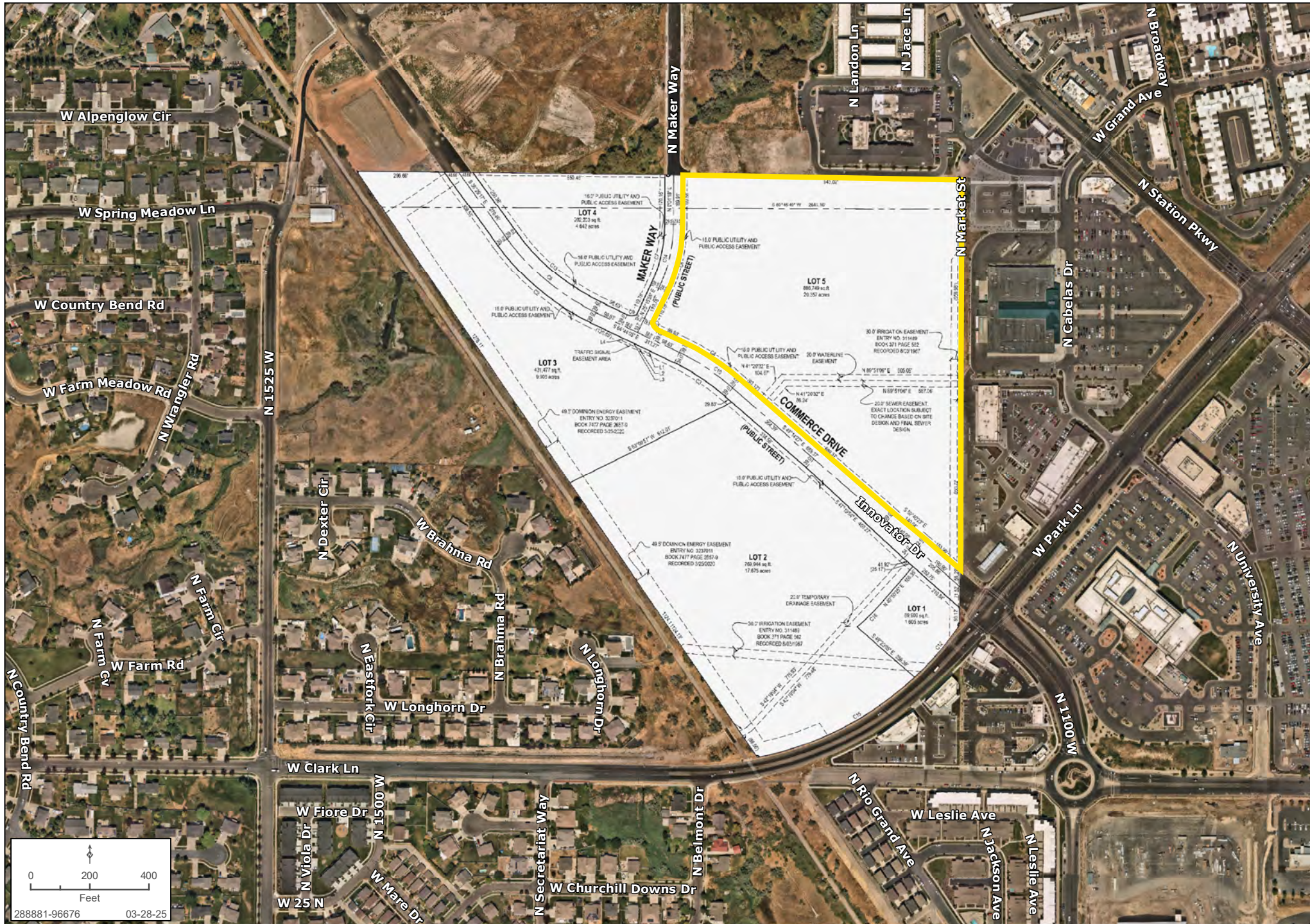
ZONING | LOT 5 FARMINGTON

Zachary Hartman | 801.704.1626 | landadvisors.com



SITE PLAN | LOT 5 FARMINGTON

Zachary Hartman | 801.704.1626 | landadvisors.com



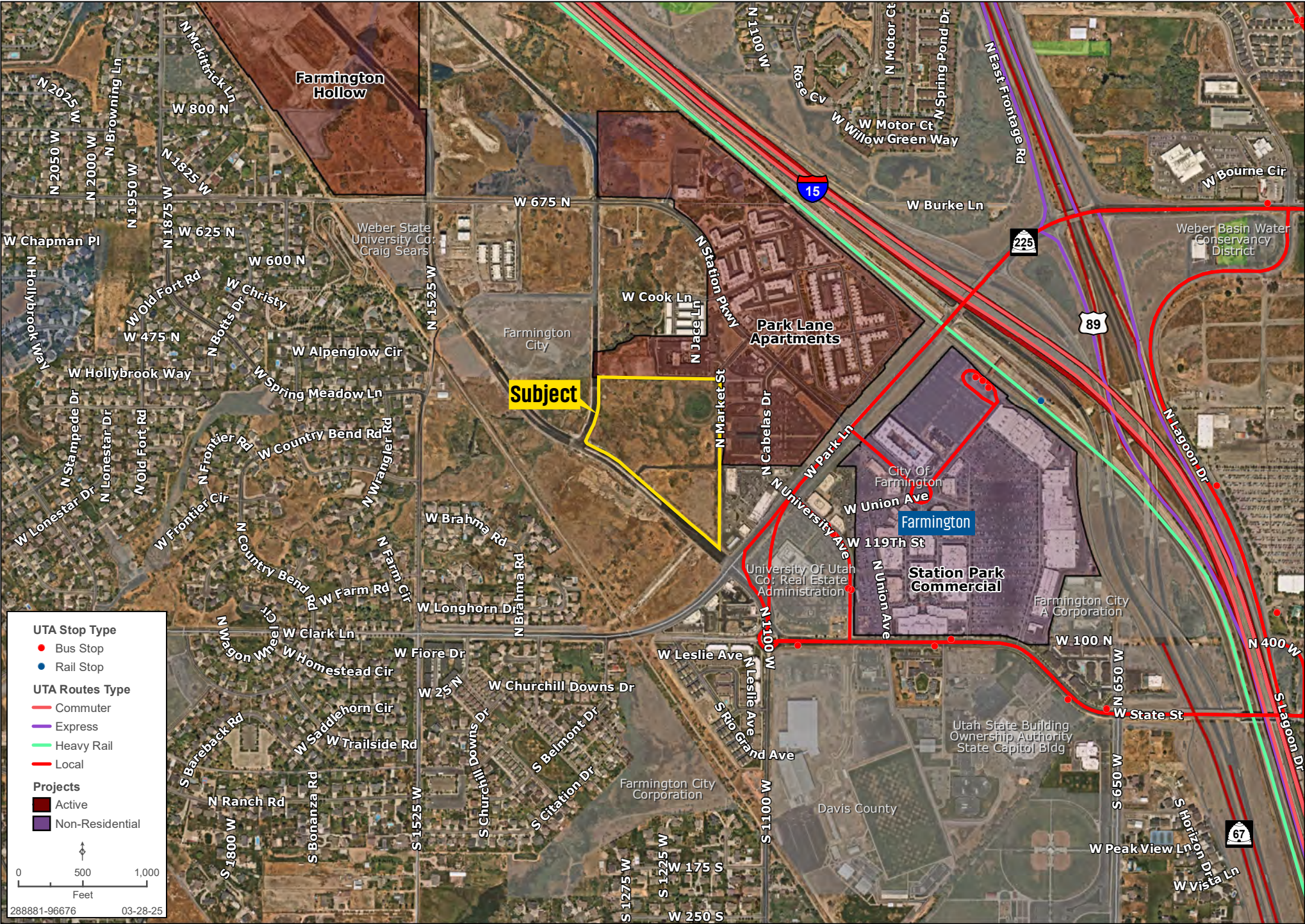
OBLIQUE | LOT 5 FARMINGTON

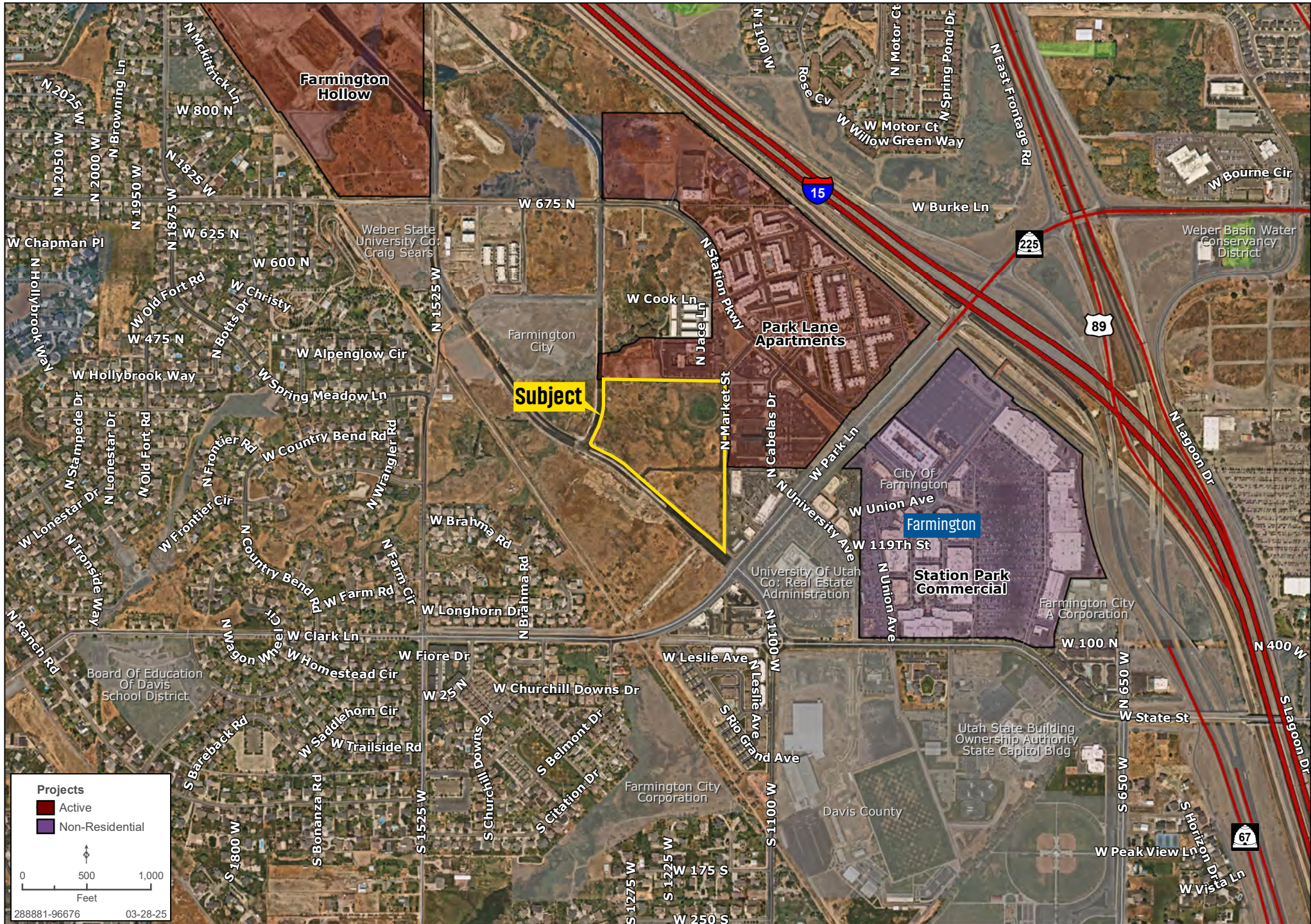
Zachary Hartman | 801.704.1626 | landadvisors.com



NEARBY TRANSPORTATION | LOT 5 FARMINGTON

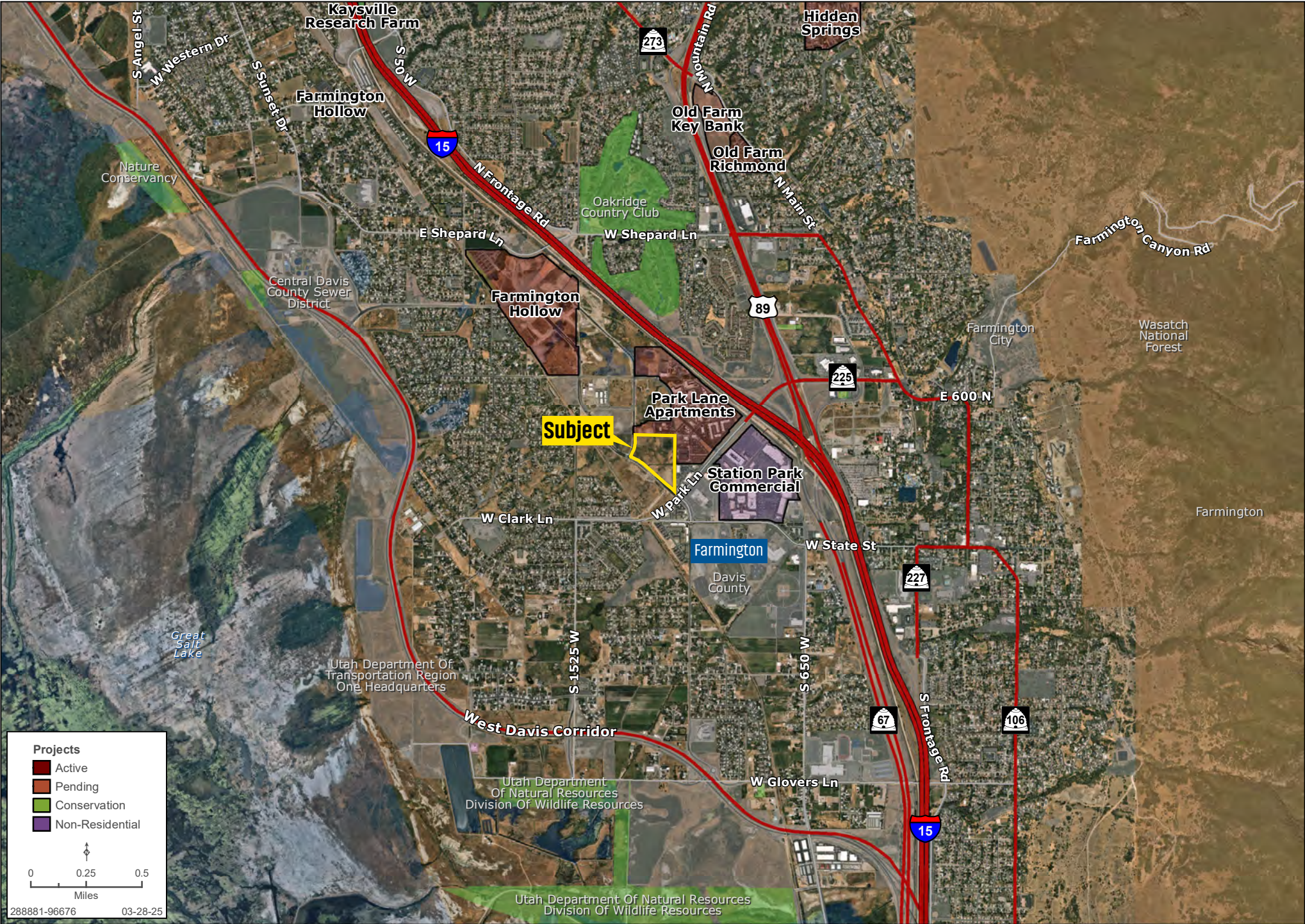
Zachary Hartman | 801.704.1626 | landadvisors.com





AREA | LOT 5 FARMINGTON

Zachary Hartman | 801.704.1626 | landadvisors.com



DEVELOPMENT | LOT 5 FARMINGTON

Zachary Hartman | 801.704.1626 | landadvisors.com



OPPORTUNITY ZONES | LOT 5 FARMINGTON

Zachary Hartman | 801.704.1626 | landadvisors.com



REGIONAL | LOT 5 FARMINGTON

Zachary Hartman | 801.704.1626 | landadvisors.com





The information in this document and any attachments regarding any property has been obtained from sources believed reliable, but we have not verified it and we make no guarantee, warranty, or representation as to its accuracy or completeness, and we do not undertake to update or correct any of the information presented. Any projections, opinions, assumptions, or estimates ("forward-looking statements") used are, for example, only and do not represent the current or future performance of the property and actual results may differ materially from such forward-looking statement due to, without limitation, changes in: (i) the market, (ii) governmental legal, regulatory or permitted use changes, and (iii) other factors. You and your advisors should conduct a careful, independent investigation of the property to determine to your satisfaction the property's suitability for your needs. Any reliance on this information is at your own risk and is subject to change, prior sale or complete withdrawal. UTDavis288881 - 04.08.2025.



LandAdvisors.com