

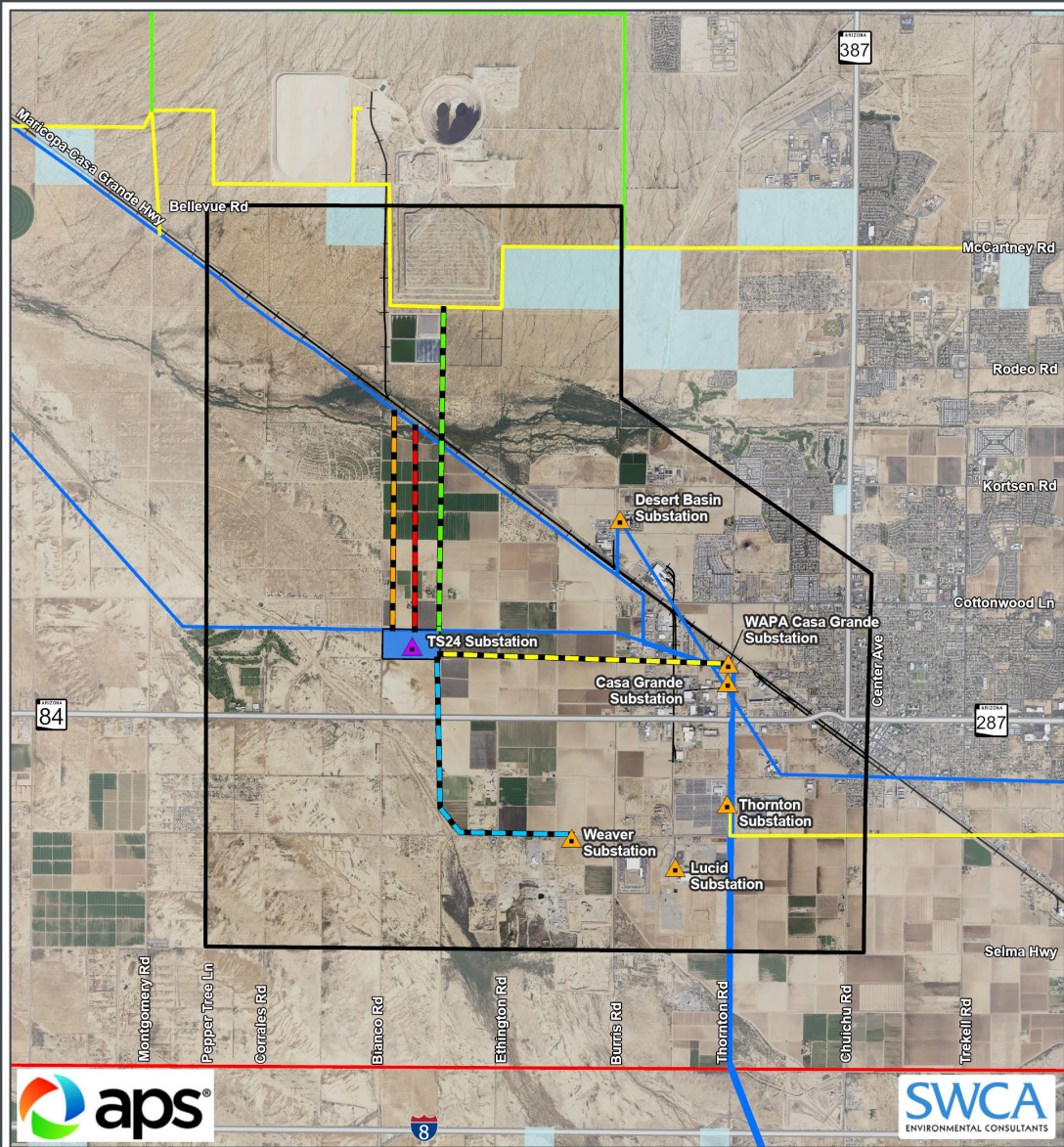
# APS TS24 Transmission Lines Siting Project

Stakeholder Outreach Meeting  
with City of Casa Grande  
August 13, 2024



# Project Overview

- The purpose of the TS24 Transmission Lines Siting Project (Project) is to expand transmission infrastructure in the Casa Grande area to support growth in the region, including recent increases in large customers.
- The Project includes new 500kV, 230kV and 69kV transmission lines interconnecting the future TS24 Substation to existing substations and transmission lines in Casa Grande and unincorporated Pinal County, Arizona.
- The Project will require siting and permitting through the Arizona Corporation Commission.



1. **TS24 – Santa Rosa/Desert Basin 500/230kV Line** – A new, approximately 2-3-mile-long, double-circuit 500/230kV line between the future TS24 Substation and the existing Santa Rosa to Desert Basin 230kV line, with one 230kV circuit toward Santa Rosa Substation and one 500kV circuit for future consideration.
  
2. **TS24 – Santa Rosa/Desert Basin Line 230/69kV Line** – A new, approximately 2-3-mile-long, double-circuit 230/69kV line between the future TS24 Substation and the existing Santa Rosa to Desert Basin 230kV line.
  
3. **TS24 – Vista/Santa Rosa 69kV Line** – A new, approximately 3-mile-long, double-circuit 69kV line between the future TS24 Substation and the existing Vista – Santa Rosa 69kV line.
  
4. **TS24 – Casa Grande 69kV Line** – A new, approximately 3-mile-long single-circuit (double-circuit capable) 69kV line between the future TS24 Substation and the existing Casa Grande Substation.
  
5. **TS24 – Weaver Substation** – A new, approximately 4-mile-long single-circuit (double-circuit capable) 230/69kV line between the future TS24 Substation and the existing Weaver Substation.

aps®

SWCA ENVIRONMENTAL CONSULTANTS

APS TS24 TRANSMISSION LINES SITING PROJECT

**Conceptual Connections**

Pinal County, Arizona

0 0.75 1.5 Miles

**Project Features**

- Preliminary Siting Area
- TS24 Siting Area
- ▲ Proposed Substation

**Land Ownership**

- Private / Municipal
- State Trust

**Existing Infrastructure**

- ▲ Existing Infrastructure

**TS24 Conceptual Connections**

- 1. 500/230kV TS24-Santa Rosa-Desert Basin
- 2. 230/69kV TS24-Santa Rosa-Desert Basin
- 3. 69kV TS24-Vista/Santa Rosa Line
- 4. 69kV TS24-Casa Grande
- 5. 69kV TS24-Weaver Substation
- 69kV Transmission Line
- 115kV Transmission Line
- 230kV Transmission Line
- 500kV Transmission Line
- Railroad
- Highways

**Regional Area Map**

# Siting Process Overview and Schedule

- a. **Inventory/mapping (Q1/Q2 2024)**: SWCA reviews existing land use and conducts field ground-truthing, then reviews future land use and culturally and biologically sensitive areas.
- b. **Opportunities and Constraints Analysis with Stakeholder Outreach (Q2/Q3 2024)**: APS and SWCA meet with project stakeholders to gather information, then review the various land uses and sensitive resource areas to identify areas of opportunities and constraints.
- c. **Preliminary Link Development (Q3/Q4 2024)**: Using the opportunities and constraints rankings, SWCA works with APS to develop potential links for siting the proposed transmission lines.
- d. **Public Open House #1 (Q4 2024)**: APS and SWCA will host in-person and virtual open houses to solicit feedback on the preliminary links.
- e. **Link Review/Refinement (Q4 2024/Q1 2025)**: SWCA works with APS to rank the preliminary links based on their suitability for siting the proposed facilities.



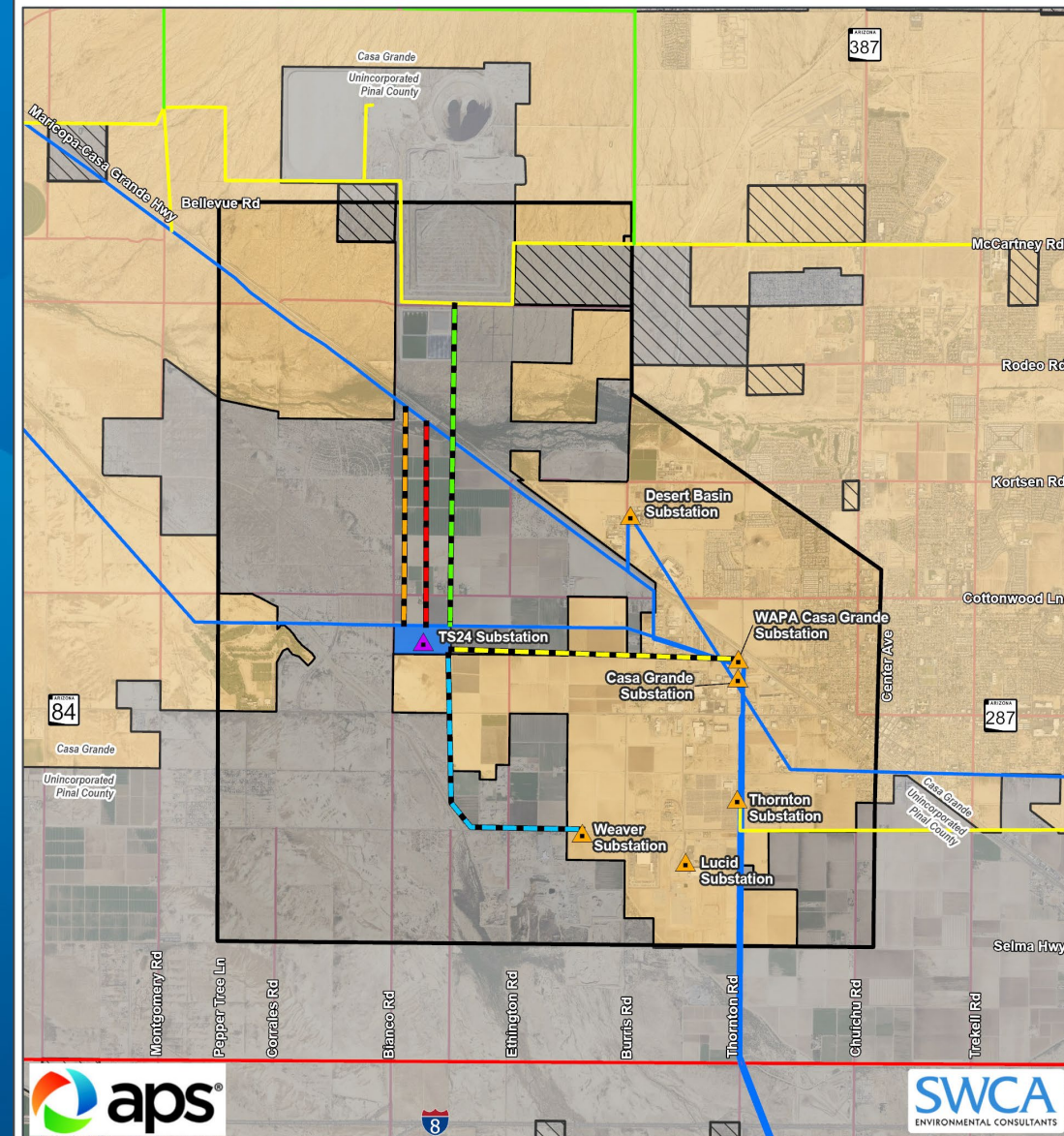
We are here

# Siting Process Overview and Schedule (continued)

- f. Route/Site Alternative Development (Q1 2025):** Based on the link rankings, SWCA works with APS to develop alternatives for full routes for siting the proposed transmission lines.
- g. Public Open House #2 (Q1 2025):** APS and SWCA will host in-person and virtual open houses to solicit feedback on the preliminary alternative routes.
- h. Route/Site Alternative Refinement/Selection (Q1/Q2 2025):** SWCA works with APS to rank and refine the preliminary alternative routes.
- i. Permitting (CEC Application, Hearing, and ACC Open Meeting) (Q2/Q3 2025):** Once final alternative routes are developed, SWCA and APS work to permit the preferred routes.
- j. Design and Construction (2025 – 2027)**
- k. In-Service (2028)**

# Land Jurisdiction and Ownership

- Casa Grande
- Unincorporated Pinal County
- Private and State Lands



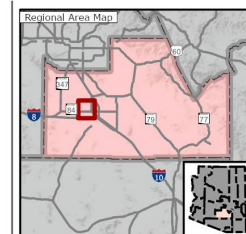
APS TS24 TRANSMISSION LINES SITING PROJECT

## Land Ownership and Jurisdiction

Pinal County, Arizona

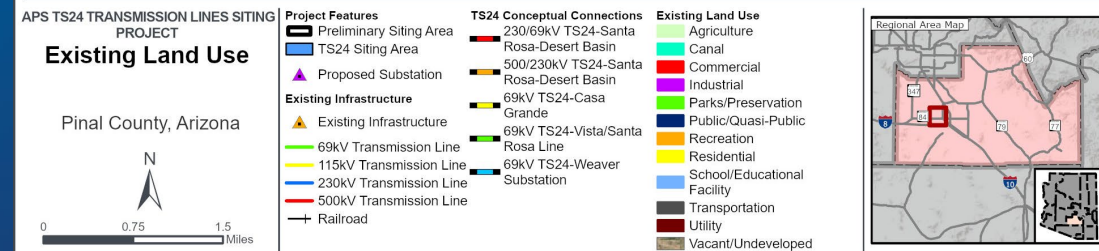
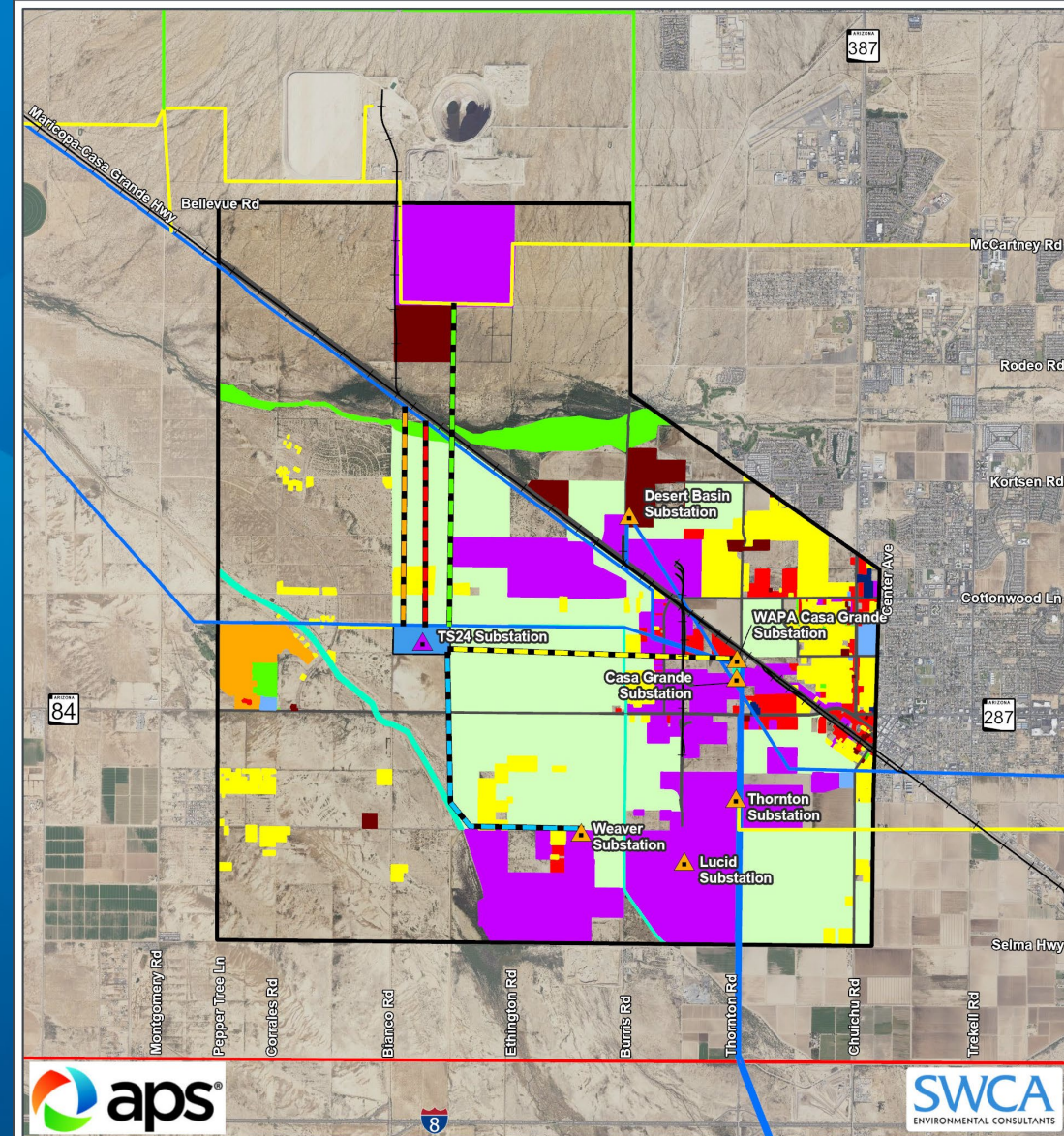


Project Features		Jurisdiction	
	Preliminary Siting Area		Casa Grande
	TS24 Siting Area		Unincorporated Pinal County
	Proposed Substation		Existing Infrastructure
<b>TS24 Conceptual Connections</b>			
	230/69kV TS24-Santa Rosa-Desert Basin		69kV Transmission Line
	500/230kV TS24-Santa Rosa-Desert Basin		115kV Transmission Line
	69kV TS24-Casa Grande		230kV Transmission Line
	69kV TS24-Vista/Santa Rosa Line		500kV Transmission Line
	69kV TS24-Weaver Substation		Railroad
<b>Land Ownership</b>			
	Private / Municipal		Highways
	State Trust		



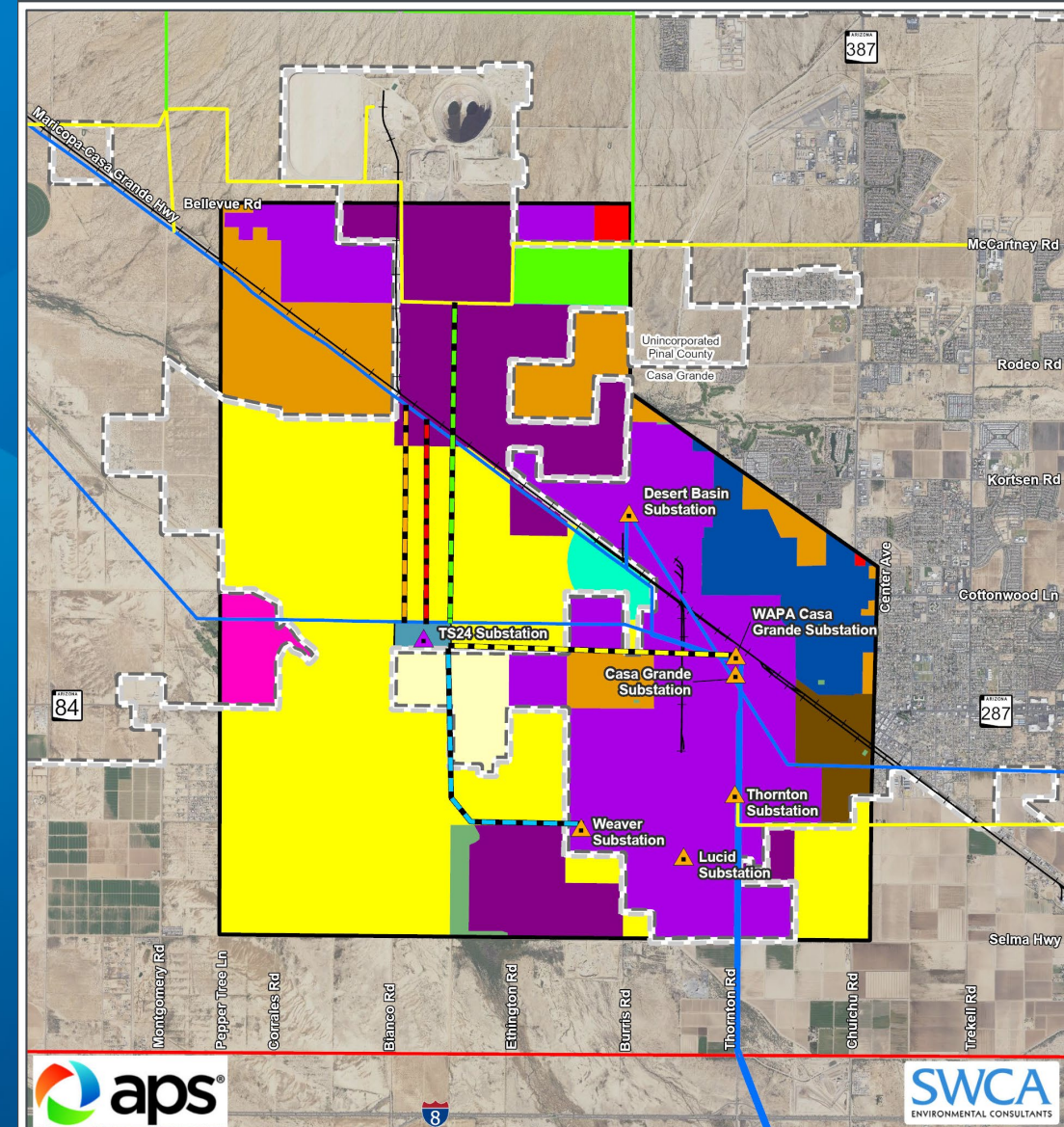
# Existing Land Use

- Primarily agricultural, industrial and vacant
- Concentrated areas of residential, commercial and utility
- Other scattered land uses



# Future Land Use – Overall

- Large areas of residential, manufacturing/industrial and employment
- Manufacturing/industrial along West Maricopa – Casa Grande Highway
- Moderate Low Density Residential

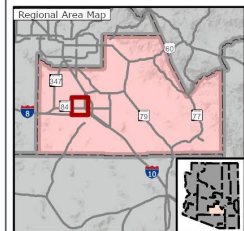


## APS TS24 TRANSMISSION LINES SITING PROJECT Future Land Use

Pinal County, Arizona

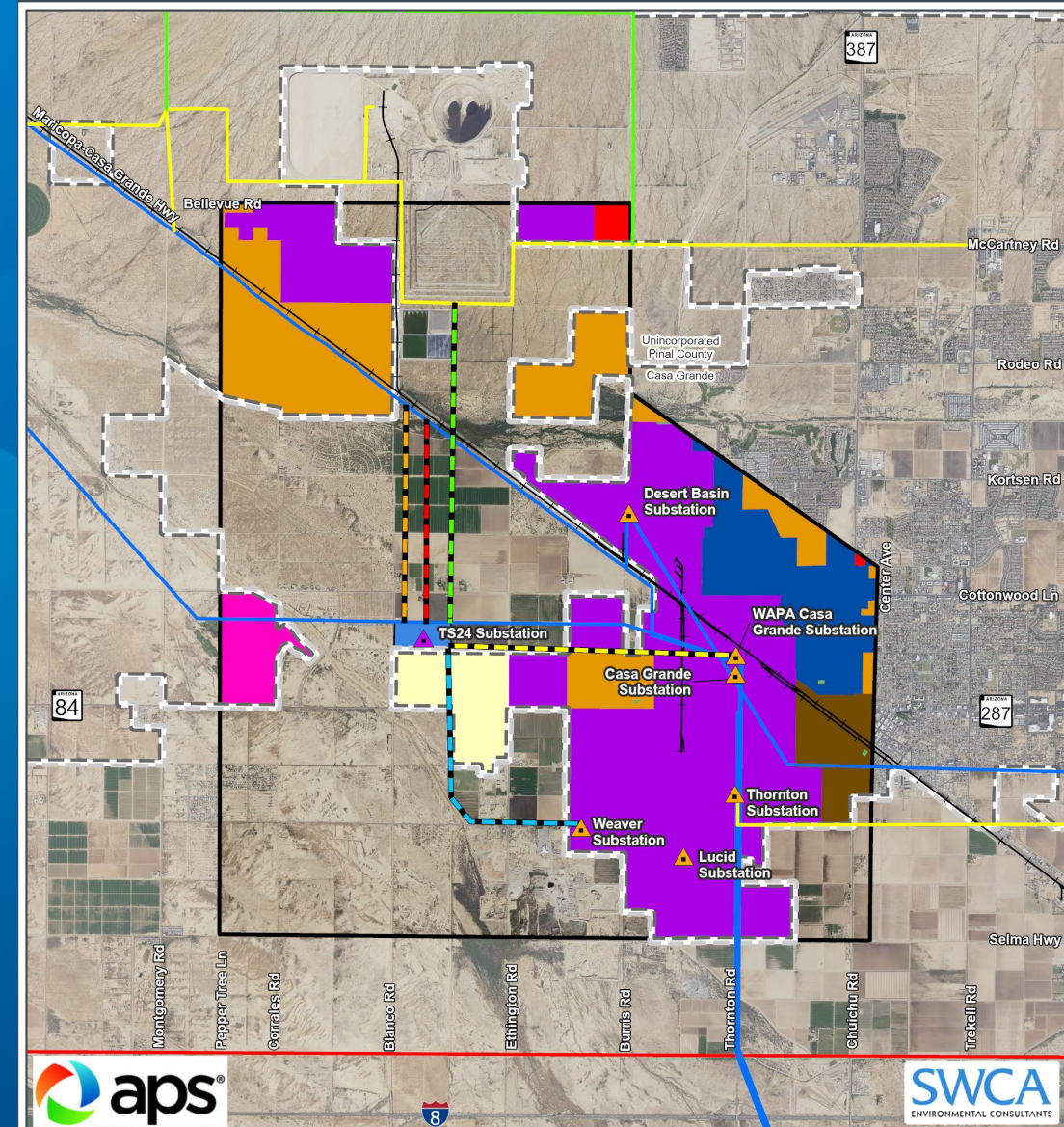


<p><b>Project Features</b></p> <ul style="list-style-type: none"> <li>■ Preliminary Siting Area</li> <li>■ TS24 Siting Area</li> <li>▲ Proposed Substation</li> </ul> <p><b>Existing Infrastructure</b></p> <ul style="list-style-type: none"> <li>▲ Existing Infrastructure</li> <li>— 69kV Transmission Line</li> <li>— 115kV Transmission Line</li> <li>— 230kV Transmission Line</li> <li>— 500kV Transmission Line</li> <li>— Railroad</li> </ul>	<p><b>Jurisdiction</b></p> <ul style="list-style-type: none"> <li>■ Casa Grande</li> <li>■ Unincorporated Pinal County</li> </ul> <p><b>TS24 Conceptual Connections</b></p> <ul style="list-style-type: none"> <li>— 230/69kV TS24-Santa Rosa-Desert Basin</li> <li>— 500/230kV TS24-Santa Rosa-Desert Basin</li> <li>— 69kV TS24-Casa Grande</li> <li>— 69kV TS24-Vista/Santa Rosa Line</li> <li>— 69kV TS24-Weaver Substation</li> </ul> <p><b>Casa Grande General Plan</b></p> <ul style="list-style-type: none"> <li>■ Commerce &amp; Business</li> <li>■ Neighborhoods</li> <li>■ Rural</li> </ul>	<ul style="list-style-type: none"> <li>■ Open Space</li> <li>■ Community Corridor</li> <li>■ Manufacturing / Industry</li> <li>■ Large Mixed-Use</li> <li>■ Downtown</li> </ul> <p><b>Pinal County General Plan</b></p> <ul style="list-style-type: none"> <li>■ General Commercial</li> <li>■ Very Low Density Residential</li> <li>■ Moderate Low Density Residential</li> <li>■ Medium Density Residential</li> <li>■ Green Energy Production</li> <li>■ Recreation/Conservation</li> <li>■ Mid Intensity Activity Center</li> <li>■ Employment</li> </ul>
--	---	---



# Future Land Use – Casa Grande

- Large areas of manufacturing/industrial and employment
- Residential/neighborhoods, rural, large mixed-use, community corridor, and downtown



APS TS24 TRANSMISSION LINES SITING PROJECT

## Future Land Use Casa Grande

Pinal County, Arizona



- Project Features**
- Preliminary Siting Area
  - TS24 Siting Area
  - Proposed Substation
- Existing Infrastructure**
- Existing Infrastructure
  - 69kV Transmission Line
  - 115kV Transmission Line
  - 230kV Transmission Line
  - 500kV Transmission Line
  - Railroad

- Jurisdiction**
- Casa Grande
  - Unincorporated Pinal County
- TS24 Conceptual Connections**
- 230/69kV TS24-Santa Rosa-Desert Basin
  - 500/230kV TS24-Santa Rosa-Desert Basin
  - 69kV TS24-Casa Grande
  - 69kV TS24-Vista/Santa Rosa Line
  - 69kV TS24-Weaver Substation
- Casa Grande General Plan**
- Commerce & Business

- Neighborhoods
- Rural
- Open Space
- Community Corridor
- Manufacturing / Industry
- Large Mixed-Use
- Downtown

