

# The Madison

SQ FOOTAGE

BED / BATH

GARAGE

~1,196 SF

2 BD / 1.5 BA

3

PRICE RANGE

**\$380K - \$480K**

A KUNDERT FOUNDATION HOME

## ABOUT THIS PLAN

The Madison is designed for both comfort and functionality, a single-level home that brings open-concept living and practical design together without compromise. The kitchen, dining, and living areas flow effortlessly into one another, with direct access to the rear patio. Large windows fill the main living space with natural light, while vaulted ceilings in the kitchen and living room add a sense of scale and airiness that elevates the entire home.

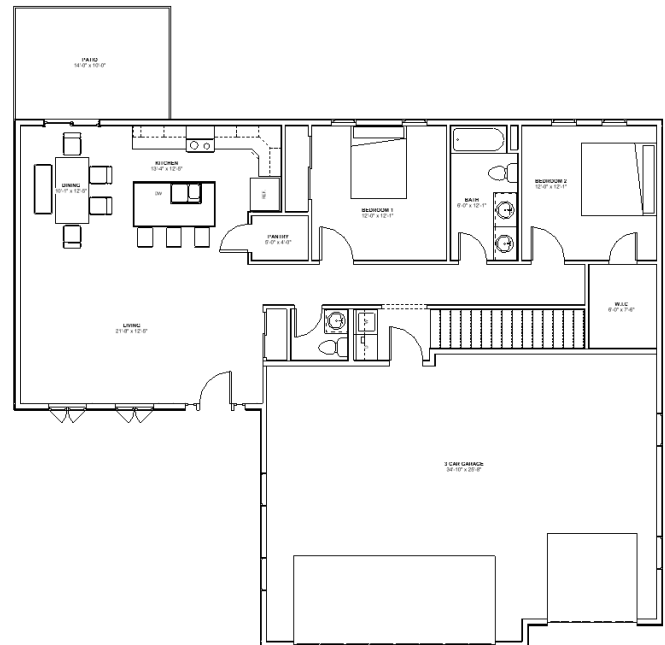
The main level delivers everything you need day-to-day: two comfortable bedrooms including a spacious primary suite with a walk-in closet, a full bathroom, main-floor laundry, a generous pantry, and a three-car garage that keeps storage and convenience close at hand.

## PLAN HIGHLIGHTS

- Open-concept main area
- Vaulted ceilings in main area
- Master suite w/ walk-in closet
- Direct patio access
- Large windows for natural light
- Dedicated pantry for storage
- Main-floor laundry
- Three-car garage
- Customizable basement plan
- Half bath for guest accessibility

*Slight modifications can be made. Basements are fully-customizable. Selections and finishes can influence final price.*

## FIRST FLOOR PLAN



The optional basement plan adds almost 1,200 additional square feet to your home creating more space for a growing family. The basement plan is fully customizable to tailor to your needs.

