

The Delaven

SQ FOOTAGE

BED / BATH

GARAGE

~1,741 SF

3 BD / 2 BA

3



KUNDERT CONSTRUCTION

ABOUT THIS PLAN

Welcome home to a smartly crafted ranch where every square foot works as hard as you do. The heart of the home centers around a spacious kitchen, dining area, and generous living room — creating a bright, connected space ideal for gathering and entertaining alike.

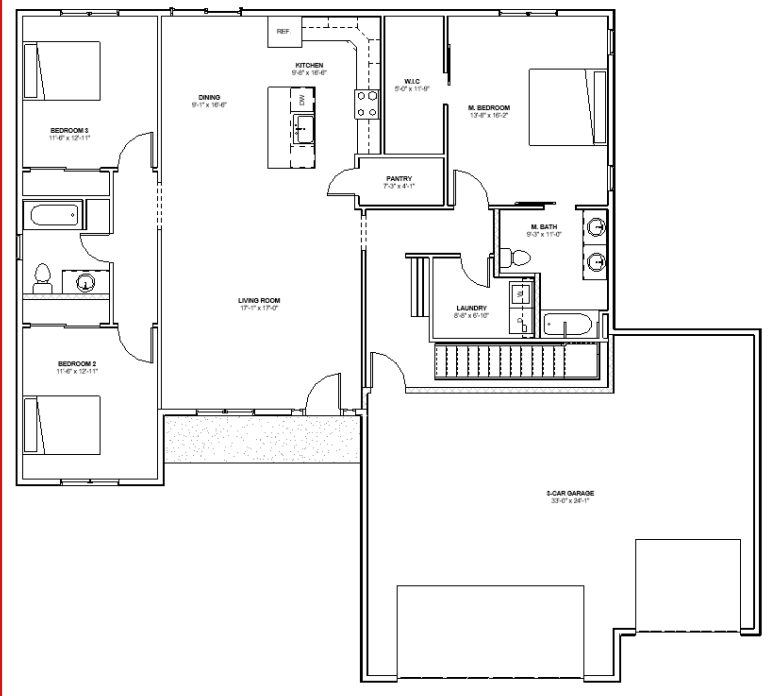
A split-bedroom layout provides added privacy, with the master suite tucked away on one side of the home, complete with a walk-in closet and private master bath. Two additional bedrooms share a full bath on the opposite side. Practical touches like main-floor laundry and a dedicated pantry enhance everyday convenience, while the expansive three-car garage offers ample storage and flexibility. An optional fully-customizable basement adds room to grow.

PLAN HIGHLIGHTS

- Split-bedroom layout
- Open-concept great room
- Ample kitchen space w/ pantry
- Main-floor laundry room
- Optional basement plan
- Master suite w/ walk-in closet
- Private master bathroom
- Front porch with sitting space
- Three-car garage
- Flexible open concept

Slight modifications can be made. Basements are fully-customizable. Selections and finishes can influence final price.

FIRST FLOOR PLAN



The optional basement plan adds up to 1,741 additional sq. ft. with space for two future bedrooms, a full bath, utilities & storage, and a large recreation space - fully customizable to your needs.

