

ENGLISH

Moover Toys Dump Truck is designed for children aged 8-48 months. The truck enables the child to drive and steer simultaneously – and it is Moover Toys' flagship within vehicles. Not least on account of its great design.

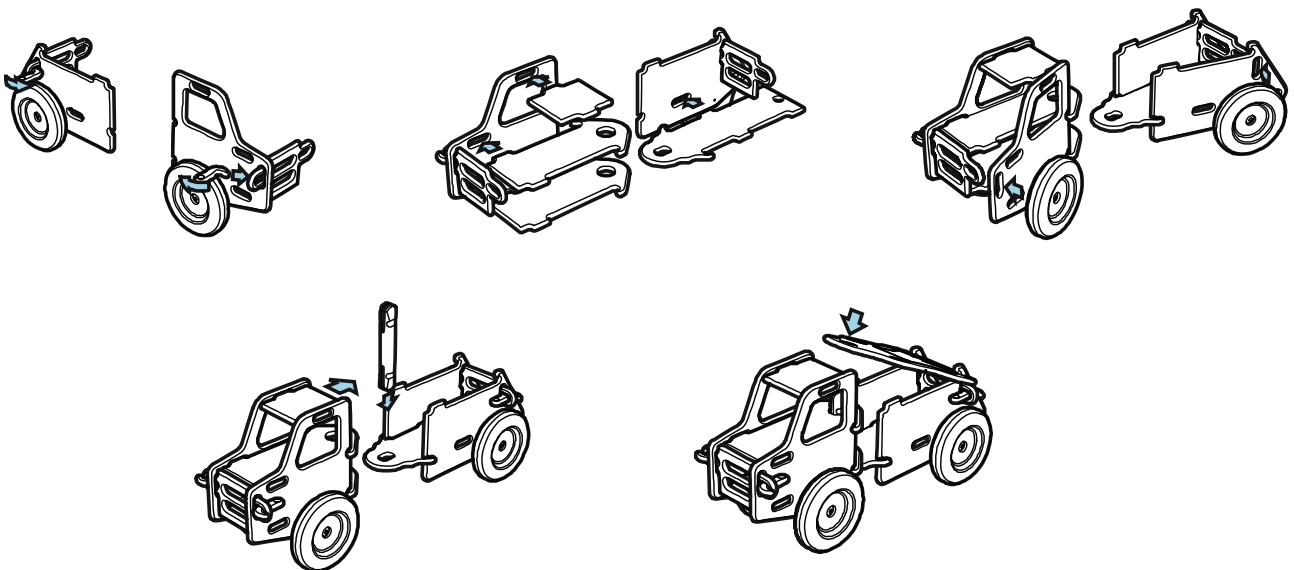
Learning: Moover Toys Dump Truck helps the child explore and practice motor skills by turning and reversing the truck. Additionally, the child can use the truck to transport various things. When the child gets older, he or she gradually learns how to assemble and separate the Dump truck – thereby strengthening the construction and motor skills.

Safety: Moover Toys' Dump Truck is designed with double tires, which gives an extra strong and non-skid grip on the driving surface. The truck's driving properties are sufficiently versatile as to give the child a fun experience while the speed isn't too fast.

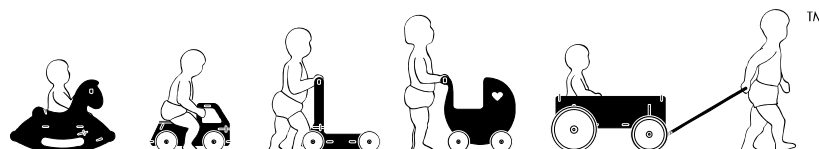
Assembly: Moover Toys are delivered in flat packs and can be assembled easily and quickly with Moover Toys' unique "click key system" - without the use of any tools. The assembly of Moover Toys' products is a joint, constructive experience for both children and grown-ups – later on, the children will be able to assemble the toys themselves.

Age: 8-48 months

Design by: Kåre Tofte



www.moovertoys.com



TM

ENGLISH

Moover Toys' Rocking Horse is a fun and instructive rocking horse, which has been designed specifically for the very small children. The design combines the classic rocking horse with modern design – and introduces the child to the ancient game of "rocking" in a safe and fun way.

Learning: Moover Toys' Rocking Horse teaches the child to rock by experiencing how a repeated body movement is transformed to the rocking movements of the horse.

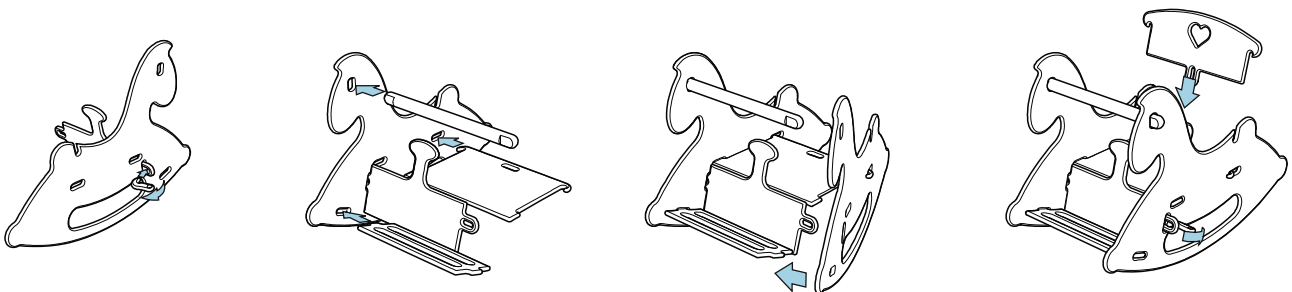
Safety: The rocking horse is designed with Moover Toys' special "brake curve" ensuring that the horse doesn't rock too high. This brake works automatically and unnoticed by reducing the speed when the horse reaches its highest point.

Moover Toys' Rocking Horse is also designed to ensure that the child sits securely in a protected seat. This results in a safe position during the rocking and prevents the child from touching the floor. The seat is intentionally made in such a way that it takes some time for the child to climb onto the seat.

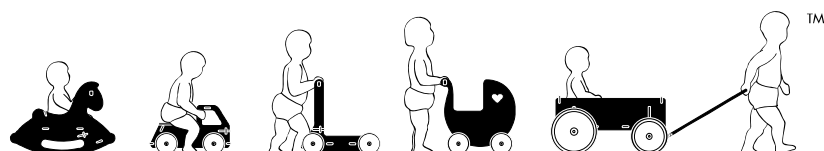
Assembly: Moover Toys are delivered in flat packs and can be assembled easily and quickly with Moover Toys' unique "click key system" - without the use of any tools. The assembly of Moover Toys' products is a joint, constructive experience for both children and grown-ups – later on, the children will be able to assemble the toys themselves.

Age: 6-30 months

Design by: Kåre Tofte



www.moovertoys.com



ENGLISH

Moover Baby Truck is specially designed for children aged from 6 months. The truck is fun and enables the child to familiarize him or herself with play on wheels in a safe way. It appeals to both boys and girls – and is therefore an obvious choice as the child's first "ride-on" toy.

Play and Learning: With Moover Baby Truck the child can practice simple assembling and construction skills as both the truck body and the crane can be removed. In the driver's cab there is room for a teddy bear or a doll and other toys can be placed in the back. A creative mixture of play and learning.

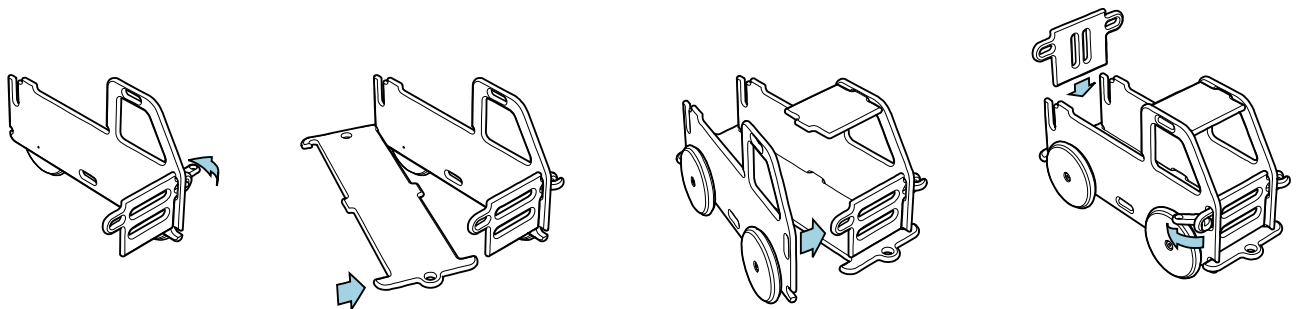
*"Our son was one year old, when he learned to disassemble the baby truck, now he is almost two and still very interested in playing with the truck."
- Jani Laurikainen, Finland.*

Safety: Moover Baby Truck is designed to drive straight, and the positioning of the rear wheels ensures that it cannot tilt. The truck thus gives the child a safe and calm first-time experience of toys on wheels.

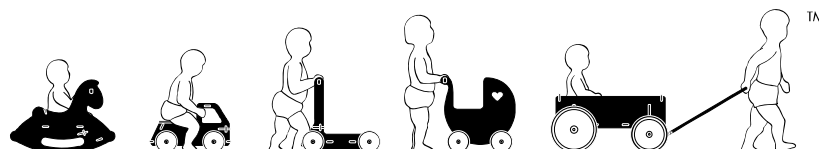
Please note – the crane is attached by inserting the 2 crane arm-pieces into the 2 slots of the back panel (in Fig 4). These must be inserted before the back panel is attached to the truck.

Age: 6m+

Design by: Kåre Tofte



www.moovertoys.com



ENGLISH

Moover Toys' Baby Walker is both a fun and perfect helper when the small children are about to learn how to walk. Designed in such a way that the first steps are made safely – and in the child's own pace. Thus, learning how to walk becomes a very happy experience for the child as well as the parents.

Play & Learning: Safety is the key word when the child is about to take the first steps and this is where Moover Toys' Baby Walker fulfils the child's need for support. The optimum learning process with the Baby Walker must fulfill certain requirements:

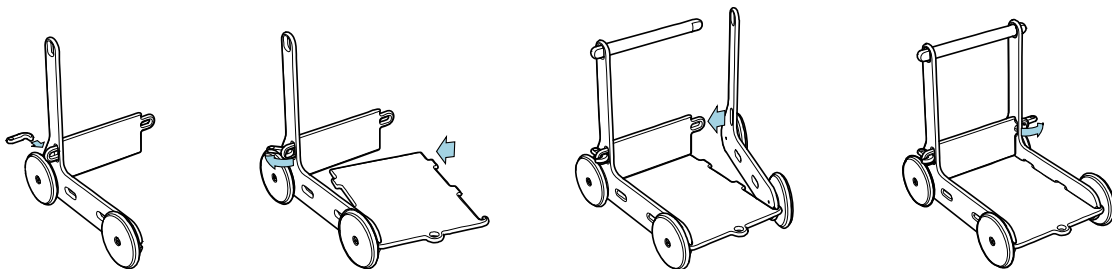
- 1) The walker must be fully stable - not tilt under any circumstances.
- 2) It must have an easily identifiable and firm handle.
- 3) An effective brake.
- 4) It is vital that the walker can move slowly forwards and backwards.
- 5) That the walker functions as a tool which focuses on the learn-to-walk function and supports the child.
- 6) A baby walker should be made of wood.

Safety: wheel brake ensures that Moover Toys' Baby Walker moves slowly and therefore stays with the child. The positioning of the wheels and handles are carefully constructed so the walker is 100% stable under all conditions. The shock absorbing rubber wheels ensure that Moover Toys' Baby Walker stands firmly and securely. Furthermore, the rubber wheels work like "bumpers" protecting the door frames and walls of the home.

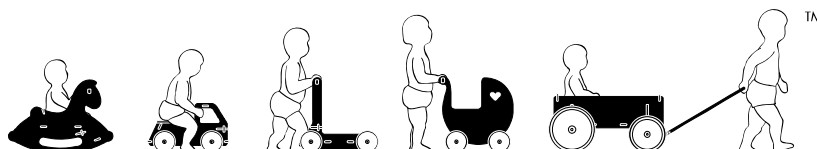


Please note – on both back wheels there is a tension screw on the inner surface of the yellow wheel (see below) that can be adjusted to make the wheels turn freely or to create a brake on the wheel.

The Baby Walker's features are designed to help children aged from 6 months. After this, it can be used as a toy cart up to approx. the age of four.



www.moovertoys.com



ENGLISH

Moover Toys' Doll's Pram is both classic and modern in its design with focus on what children like to see, touch, and play with. The high quality gives the child optimum playing conditions. The doll's pram is suitable for both big and small dolls.

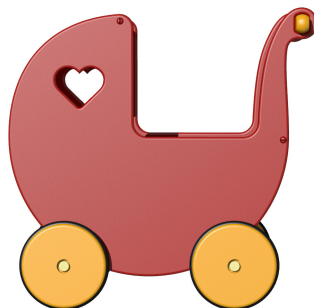
The doll's pram is made of high-quality birch veneer and supplied with massive wooden wheels with rubber tires. The back is made of one piece of moulded thin veneer. It is delivered assembled, ready for use.

Play & Learning: Through playing, the child learns to look after the dolls, make them feel safe and make them go to sleep. This is an imitation of the grown-ups' behaviour, which is so essential for a child's upbringing.

Safety: The doll's pram is not intended for learning how to walk. We recommend the use of our Moover Baby Walker, which is specially developed to help the child with this particular learning process.

Age: 10m+

Design by: Kåre Tofte



www.moovertoys.com

