

Bass Trombone

Kyrie

Mass of Saint Francis

Music by
LAURA LEA DUCKWORTH

♩ = 88

(1-2) *p* (5-6)

7 *mp* (9-10) *mp*

sample

Gloria

Music by
LAURA LEA DUCKWORTH

♩ = 110

f *mf*

7

sample

12

15

(18-32)

mf

37

mf

43

f *mf* *f*

49

poco rit. *rit.*

Bass Trombone

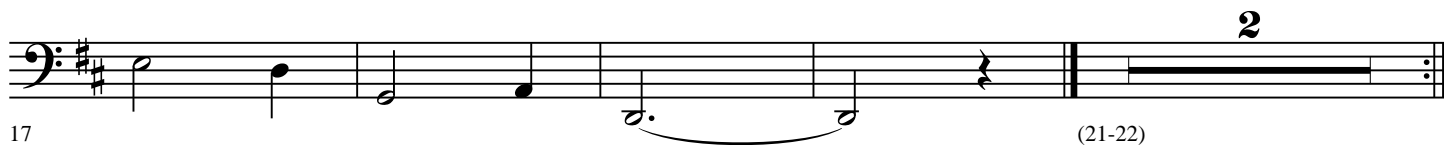
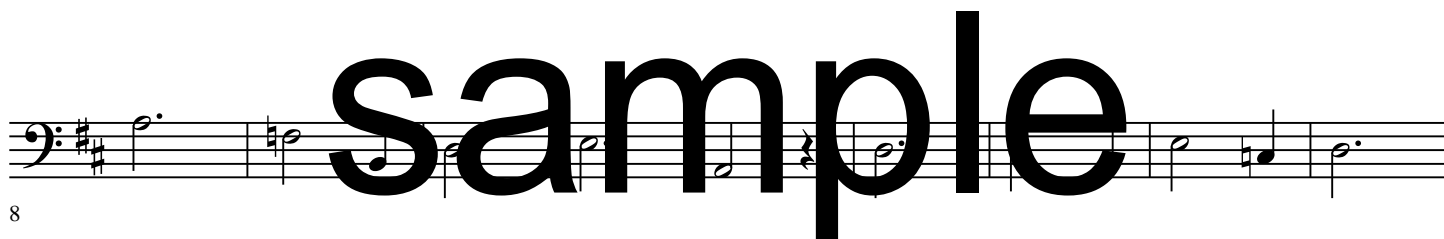
Mass of Saint Francis

Alleluia / Lenten Gospel Acclamation

Version I

Music by
LAURA LEA DUCKWORTH

Quickly (in one) $\text{♩} = 60$



Alleluia / Lenten Gospel Acclamation

Version II

Music by
LAURA LEA DUCKWORTH



Sanctus

Music by
LAURA LEA DUCKWORTH

♩ = 126

8

16 (22-28)

30

Memorial Acclamation A

Music by
LAURA LEA DUCKWORTH

1

6

Bass Trombone

Mass of Saint Francis

Memorial Acclamation B

Music by
LAURA LEA DUCKWORTH

Musical score for Memorial Acclamation B, Bass Trombone part. The score is in bass clef with a key signature of two sharps (F# and C#). It begins with a 6-measure rest, followed by a 3-measure rest (3-8), and then a melodic line starting with a mezzo-piano (*mp*) dynamic. The score is divided into three systems. The first system ends at measure 11, the second at measure 14, and the third at the end of the piece. A large 'sample' watermark is overlaid on the first system. The dynamics *mf* and *mp* are indicated.

Memorial Acclamation C

$\text{♩} = 55$

Music by
LAURA LEA DUCKWORTH

Musical score for Memorial Acclamation C, Bass Trombone part. The score is in bass clef with a key signature of two sharps (F# and C#). It begins with a 7-measure rest, followed by a melodic line starting with a tempo marking of quarter note = 55. The score is divided into three systems. The first system ends at measure 7, the second at measure 12, and the third at the end of the piece. The dynamics *mf* and *mp* are indicated.

Doxology and Amen

Music by
LAURA LEA DUCKWORTH

(Priest Recit.) (m. 4)

$\text{♩} = 50$

sample

Agnus Dei

Music by
LAURA LEA DUCKWORTH

$\text{♩} = 53$

mp

5

12

1 2

mp

17

21

rit.

pp