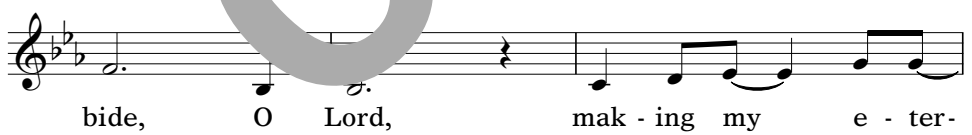
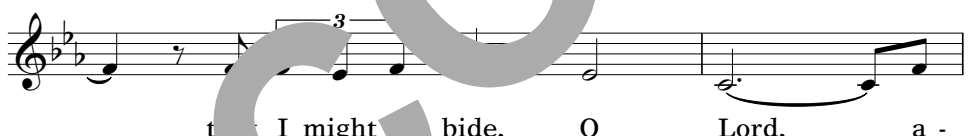
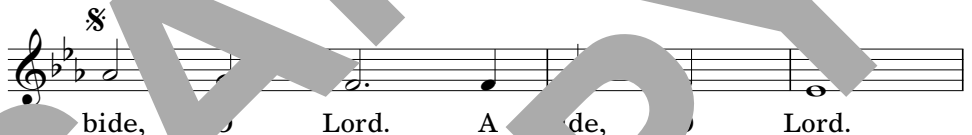
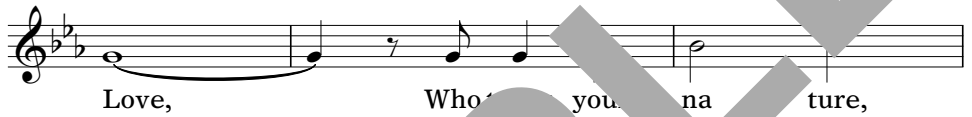


Abide, O Lord



1.

- nal home in Thee. O my

2. D.S. al Fine 3.

So a -

Text: John. 14:23, 15; I John. 2; adapt. by Stacy Whitfield, SGL
Music: Stacy Whitfield, SGL, b.1956
© 2003, International Liturgy Publications
PO Box 50476, Nashville, TN 37205
www.ILPmusic.org, 888-898-SONG
All rights reserved. Used with permission; license #

SAMPLE COPY