



# Russell Outdoors™ Realtree® Performance Tee RU150



For the outdoor enthusiast who wants the Realtree EDGE® print but prefers a more technical feel and moisture-wicking. It's a perfect base layer or stand-alone tee, ready for work, chores or exploring the great outdoors.

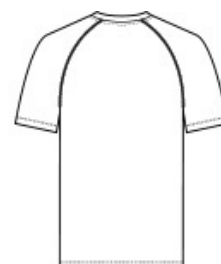
- 3.8-ounce, 100% polyester with moisture-wicking
- Tag-free label
- Realtree EDGE® print
- Shoulder-to-shoulder neck taping
- Exterior woven Russell Outdoors™ tab at hem

## CARE INSTRUCTIONS

Machine Wash Cold With Like Colors. Do Not Use Fabric Softener. Do Not Bleach. Tumble Dry Low. Remove Promptly. Cool Iron If Needed.



front



back

## HOW TO MEASURE



### CHEST WIDTH

Measure under the arm and around the fullest part of the chest with arms down, keeping tape horizontal.

## SIZE CHART

|       | XS    | S     | M     | L     | XL    | 2XL   | 3XL   | 4XL   |
|-------|-------|-------|-------|-------|-------|-------|-------|-------|
| Chest | 32-34 | 35-37 | 38-40 | 41-43 | 44-46 | 47-49 | 50-53 | 54-57 |

## COLOR INFORMATION



Realtree Edge  
PMS PATTERNED