

## SPEC SHEET + MEASUREMENTS

**SPORT-TEK**

### Sport-Tek® Lightweight French Terry Pullover Hoodie. ST272

#### Product photo



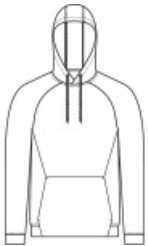
The casual ease of soft French terry in a versatile pullover.

- 6.5-ounce, 59/41 combed ring spun cotton/poly French terry
- Tag-free label
- Three-panel hood
- Dyed-to-match elastic drawcords with black plastic tips
- Integrated front pouch pocket

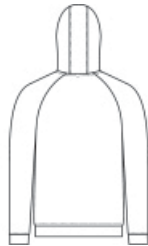
#### CARE INSTRUCTIONS

Machine wash cold with like colors, only non-chlorine bleach if needed. Tumble dry low, cool iron if necessary.

#### Sketches



front



back

# SPEC SHEET + MEASUREMENTS



## Sport-Tek® Lightweight French Terry Pullover Hoodie. ST272

### PRODUCT MEASUREMENTS

	XS	S	M	L	XL	2XL	3XL	4XL
Body Length at Back	26 1/2	27 1/2	28 1/2	29 1/2	30 1/2	31 1/2	32	32 1/2
Chest Width	19	20 1/2	22	23 1/2	25	26 1/2	28 1/2	30 1/2
Sleeve Length from Center Back	34 1/2	35 1/4	36	36 3/4	37 1/2	38 1/4	39	39 3/4

**Body Length at Back:** Measured from high point shoulder to finished hem at back.

**Chest Width:** Measured across the chest one inch below armhole when laid flat.

**Sleeve Length from Center Back:** Measure from Center Back neck to shoulder point to sleeve hem.

### SIZE CHARTS

	XS	S	M	L	XL	2XL	3XL	4XL
Chest	32-34	35-37	38-40	41-43	44-46	47-49	50-53	54-57

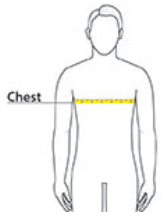
# SPEC SHEET + MEASUREMENTS



## Sport-Tek® Lightweight French Terry Pullover Hoodie. ST272

### HOW TO MEASURE

---



#### CHEST

Measure under the arm and around the fullest part of the chest with arms down, keeping tape horizontal.

### COLORS

---

Please note: PMS code information is shown only when an exact match is available.



Black  
PMS BLACK  
C



Forest Green  
Heather  
PMS 3435C



Heather Black  
PMS 426C



Heather Grey  
PMS 428C



True Navy  
PMS 533C



True Red  
PMS 200C