

Volunteer Knitwear™ Chore Fleece Pullover
Hoodie VL130H



This hefty, true-blue fleece has a grittier, textured hand-plus it's crafted with durability to stand the test of time.

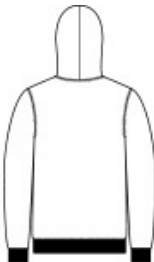
- 13-ounce, 80/20 cotton/poly
- 50/50 cotton/poly (Charcoal Heather, Strong Navy Heather)
- Proudly American made
- 1-panel hood with dart for fit
- Metal grommets with draw cords with knotted ends
- Twill neck tape
- Slightly forward shoulders
- 1x1 rib knit V inset at neck
- 1x1 rib knit cuffs and hem
- Front pouch pocket
- Side seamed
- Woven label

CARE INSTRUCTIONS

Machine Wash Cold Inside Out With Like Colors. Use Non-Chlorine Bleach When Needed. Tumble Dry Low. Do Not Iron.



front



back

HOW TO MEASURE



CHEST WIDTH
Measure under the arm and around the fullest part of the chest with arms down, keeping tape horizontal.

SIZE CHART

	S	M	L	XL	2XL	3XL	4XL
Chest	35-37	38-40	41-43	44-46	47-49	50-53	54-57

COLOR INFORMATION

Please note: PMS code information is shown only when an exact match is available.



Charcoal Heather



Deep Black
PMS BLACK C



Heather Grey



Strong Navy
Heather