

# SPEC SHEET + MEASUREMENTS

PORT AUTHORITY.

## Port Authority® Women's Insulated Heavy Ripstop Jacket. L721

### Product photo



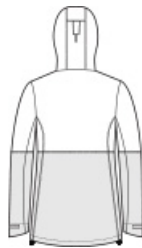
Primed for the slopes or any cold-weather commute, this storm-ready 8K/5K jacket has a compelling colorblock design and features fleece in the upper body for extra warmth.

- 100% polyester ripstop shell
- 2.3-ounce, 100% polyester polyfill insulation (hood, lower body and sleeves)
- Fabric waterproof rating: 8000MM
- Fabric breathability rating: 5000G/M<sup>2</sup>
- Adjustable hood with locking drawcords
- Full-length interior storm flap
- Zippered interior chest pocket
- Full-length exterior storm flap with snap and hook and loop closures
- Adjustable cuffs with hook and loop closures
- Zippered hand pockets
- Adjustable locking drawcord at hem
- Port Pocket™ for decoration access
- Water protection method: Durable water-repellent (DWR) finish, fully seam-sealed

### Sketches



front



back

**Care Instructions** Machine Wash Cold, With Like Colors. Only Non-Chlorine Bleach, When Needed. Tumble Dry Low. Do Not Iron. Do Not Use Fabric Softener Or Dryer Sheets. Do Not Dry Clean.

# SPEC SHEET + MEASUREMENTS

PORT AUTHORITY

## Port Authority® Women's Insulated Heavy Ripstop Jacket. L721

### PRODUCT MEASUREMENTS

	XS	S	M	L	XL	XXL	3XL	4XL
Size	2	4/6	8/10	12/14	16/18	20/22	24/26	28/30
Body Length at Back	28 7/8	29 3/8	29 7/8	30 3/8	30 7/8	31 3/8	31 7/8	32 3/8
Bust	19 1/2	20 1/2	21 1/2	23	24 1/2	26	28	30
Sleeve Length from Center Back	32 1/2	33	33 1/2	34 1/8	34 3/4	35 3/8	35 3/4	36 1/8

**Body Length at Back:** Measured from high point shoulder to finished hem at back.

**Bust:** Measured across the chest one inch below armhole when laid flat.

**Sleeve Length from Center Back:** Measure from Center Back neck to shoulder point to sleeve hem.

### SIZE CHARTS

	XS	S	M	L	XL	XXL	3XL	4XL
Size	2	4/6	8/10	12/14	16/18	20/22	24/26	28/30
Bust	32-34	35-36	37-38	39-41	42-44	45-47	48-51	52-55

# SPEC SHEET + MEASUREMENTS

PORT AUTHORITY

Port Authority® Women's Insulated Heavy Ripstop Jacket. L721

## HOW TO MEASURE



### BUST

Measure under the arm and around the fullest part of the bust with arms down, keeping tape horizontal.

## COLORS

Please note: PMS code information is shown only when an exact match is available.



Deep Black  
Black C



Dress Blue  
Navy/ Deep  
Black  
533C



Grey Steel/  
Deep Black  
7540C



True Royal/  
Deep Black  
7687C