

SPEC SHEET + MEASUREMENTS

PORT AUTHORITY

Port Authority[®] Insulated Heavy Ripstop Jacket. J721

Product photo



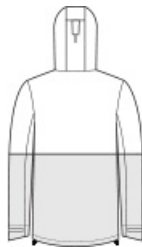
Primed for the slopes or any cold-weather commute, this storm-ready 8K/5K jacket has a compelling colorblock design and features fleece in the upper body for extra warmth.

- 100% polyester ripstop shell
- 2.3-ounce, 100% polyester polyfill insulation (upper body)
- 2.9-ounce, 100% polyester polyfill insulation (hood, lower body and sleeves)
- Fabric waterproof rating: 8000MM
- Fabric breathability rating: 5000G/M²
- Adjustable hood with locking drawcords
- Full-length interior storm flap
- Interior chest pocket under storm flap
- Full-length exterior storm flap with snap and hook and loop closures
- Adjustable cuffs with hook and loop closures
- Zippered hand pockets
- Adjustable locking drawcord at hem
- Port Pocket[™] for decoration access
- Water protection method: Durable water-repellent (DWR) finish, fully seam-sealed

Sketches



front



back

Care Instructions Machine Wash Cold, With Like Colors. Only Non-Chlorine Bleach, When Needed. Tumble Dry Low. Do Not Iron. Do Not Use Fabric Softener Or Dryer Sheets. Do Not Dry Clean.

SPEC SHEET + MEASUREMENTS

PORT AUTHORITY

Port Authority® Insulated Heavy Ripstop Jacket. J721

PRODUCT MEASUREMENTS

	XS	S	M	L	XL	2XL	3XL	4XL
Body Length at Back	28 1/2	28 1/2	30 1/2	31 1/2	32 1/2	33 1/2	34	34 1/2
Chest	20 1/2	22	23 1/2	25	26 1/2	28	30	32
Sleeve Length from Center Back	35 5/8	36 1/4	36 7/8	37 1/2	38 1/8	38 3/4	39 1/2	40 1/4

Body Length at Back: Measured from high point shoulder to finished hem at back.

Chest: Measured across the chest one inch below armhole when laid flat.

Sleeve Length from Center Back: Measure from Center Back neck to shoulder point to sleeve hem.

SIZE CHARTS

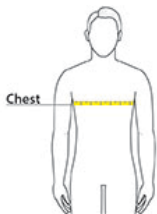
	XS	S	M	L	XL	2XL	3XL	4XL
Chest	32-34	35-37	38-40	41-43	44-46	47-49	50-53	54-57

SPEC SHEET + MEASUREMENTS

PORT AUTHORITY

Port Authority® Insulated Heavy Ripstop Jacket. J721

HOW TO MEASURE



CHEST WIDTH

Measure under the arm and around the fullest part of the chest with arms down, keeping tape horizontal.

COLORS

Please note: PMS code information is shown only when an exact match is available.



Deep Black
BLACK C



Dress Blue
Navy/ Deep
Black
533C



Grey Steel/
Deep Black
7540C



True Royal/
Deep Black
7687C