

SPEC SHEET + MEASUREMENTS

SPORT-TEK

Sport-Tek® PosiCharge® Strive Hooded Pullover. ST571

Product photo



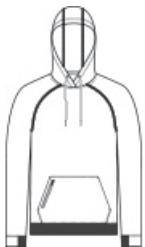
Achieve what you strive for in this elevated, moisture-wicking style that has a soft, natural hand and a slub appearance. PosiCharge technology keeps the colors strong and vibrant.

- 8.9-ounce, 90/10 poly/cotton fleece
- Three-panel hood
- Tear-away removable label
- Raglan sleeves with coverstitching
- Zippered mesh pocket on front pouch pocket
- Half elastic, half self-fabric cuffs and hem for comfort

CARE INSTRUCTIONS

Machine Wash Cold With Like Colors. Do Not Use Fabric Softener. Do Not Bleach. Tumble Dry Low. Remove Promptly. Cool Iron If Needed. Do Not Dry Clean.

Sketches



front



back

SPEC SHEET + MEASUREMENTS



Sport-Tek® PosiCharge® Strive Hooded Pullover. ST571

PRODUCT MEASUREMENTS

	XS	S	M	L	XL	2XL	3XL	4XL
Body Length at Back	26 1/2	27 1/2	28 1/2	29 1/2	30 1/2	31 1/2	32	32 1/2
Chest	18	19 1/2	21	22 1/2	24	25 1/2	27 1/2	29 1/2
Sleeve Length from Center Back	4	4	4 1/4	4 1/2	4 3/4	5	5	5 1/4

Body Length at Back: Measured from high point shoulder to finished hem at back.

Chest: Measured across the chest one inch below armhole when laid flat.

Sleeve Length from Center Back: Measure from Center Back neck to shoulder point to sleeve hem.

SIZE CHARTS

	XS	S	M	L	XL	2XL	3XL	4XL
Chest	32-34	35-37	38-40	41-43	44-46	47-49	50-53	54-57

SPEC SHEET + MEASUREMENTS



Sport-Tek® PosiCharge® Strive Hooded Pullover. ST571

HOW TO MEASURE



CHEST

Measure under the arm and around the fullest part of the chest with arms down, keeping tape horizontal.

COLORS

Please note: PMS code information is shown only when an exact match is available.



Black
PMS BLACK
C



Deep Red
PMS 201C



Graphite
PMS COOL
GRAY 11C



True Navy
PMS 533C



True Royal
PMS 7687C