

# SPEC SHEET + MEASUREMENTS

PORT AUTHORITY

Port Authority® C-FREE® Fleece Vest. F702

## Product photo



Make a sustainable choice with these fleece vests created for easy-wearing warmth and a lighter carbon footprint.

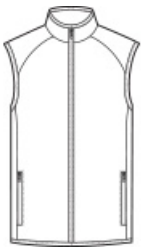
- 8.3-ounce, 100% recycled polyester fleece
- This product's carbon footprint has been measured and reduced through a combination of preferred materials and investing in carbon offset projects through the ClimeCo
- Certified Product™ Program
- Low-pill finish
- Zip-through cadet collar
- Binding at neck, center front zipper and hem
- Reverse coil zipper
- Open front pockets

### A C-FREE® Product

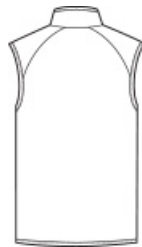
We start by reducing the product's impact by switching to at least 50% preferred materials. We then measure and reduce the total carbon footprint of each product in the C-FREE program—from cradle-to-grave—through the ClimeCo Certified Product™ Program. This certification purchases third-party, verified carbon offsets through ClimeCo.

**Care Instructions** Machine Wash Cold With Like Colors. Gentle Cycle. Non-Chlorine Bleach, When Needed. Tumble Dry Low. Remove Promptly. Do Not Iron.

## Sketches



front



back

# SPEC SHEET + MEASUREMENTS

PORT AUTHORITY

Port Authority® C-FREE® Fleece Vest. F702

## PRODUCT MEASUREMENTS

|                     | XS     | S      | M      | L      | XL     | 2XL    | 3XL | 4XL    |
|---------------------|--------|--------|--------|--------|--------|--------|-----|--------|
| Body Length at Back | 26 1/2 | 27 1/2 | 28 1/2 | 29 1/2 | 30 1/2 | 31 1/2 | 32  | 32 1/2 |
| Chest               | 18 1/2 | 20     | 21 1/2 | 23     | 24 1/2 | 26     | 28  | 30     |

**Body Length at Back:** Measured from high point shoulder to finished hem at back.

**Chest:** Measured across the chest one inch below armhole when laid flat.

## SIZE CHARTS

|       | XS    | S     | M     | L     | XL    | 2XL   | 3XL   | 4XL   |
|-------|-------|-------|-------|-------|-------|-------|-------|-------|
| Chest | 32-34 | 35-37 | 38-40 | 41-43 | 44-46 | 47-49 | 50-53 | 54-57 |

## HOW TO MEASURE



### CHEST WIDTH

Measure under the arm and around the fullest part of the chest with arms down, keeping tape horizontal.

# SPEC SHEET + MEASUREMENTS

PORT AUTHORITY

Port Authority® C-FREE® Fleece Vest. F702

## COLORS

Please note: PMS code information is shown only when an exact match is available.



Deep Black  
BLACK C



Grey Steel  
7540C



True Navy  
533C



True Royal  
7687C