

SPEC SHEET + MEASUREMENTS

SPORT-TEK

Sport-Tek® Posi-UV® Pro Long Sleeve Polo. ST520LS

Product photo



Designed for game day or the work day, these breathable polos offer a soft, matte hand and deliver exceptional UV protection, PosiCharge color-locking technology and moisture wicking.

- 4-ounce, 100% polyester interlock with PosiCharge technology
- UPF rating of 50
- Removable tag for comfort and relabeling
- Self-fabric collar with collar stand
- Taped neck
- 3-button placket with dyed-to-match buttons
- Set-in, open hem sleeves

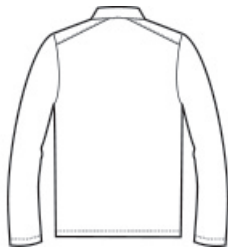
CARE INSTRUCTIONS

Machine wash cold with like colors. Do not bleach do not use softener. Tumble dry low. Remove promptly. Cool iron on reverse side if needed. Do not dry clean.

Sketches



front



back

SPEC SHEET + MEASUREMENTS



Sport-Tek® Posi-UV® Pro Long Sleeve Polo. ST520LS

PRODUCT MEASUREMENTS

	XS	S	M	L	XL	2XL	3XL	4XL
Body Length at Back	26 3/4	27 3/4	28 3/4	29 3/4	30 3/4	31 3/4	32 1/4	32 3/4
Chest Width	18	19 1/2	21	22 1/2	24	25 1/2	27 1/2	29 1/2
Sleeve Length	34 1/2	35 1/4	36	36 3/4	37 1/2	38 1/4	39	39 3/4

Body Length at Back: Measured from high point shoulder to finished hem at back.

Chest Width: Measured across the chest one inch below armhole when laid flat.

Sleeve Length: Start at center of neck and measure down shoulder, down sleeve to hem.

SIZE CHARTS

	XS	S	M	L	XL	2XL	3XL	4XL
Chest	32-34	35-37	38-40	41-43	44-46	47-49	50-53	54-57

SPEC SHEET + MEASUREMENTS



Sport-Tek® Posi-UV® Pro Long Sleeve Polo. ST520LS

HOW TO MEASURE



CHEST

Measure under the arm and around the fullest part of the chest with arms down, keeping tape horizontal.

COLORS

Please note: PMS code information is shown only when an exact match is available.



Black
PMS BLACK
C



Dark Smoke
Grey
PMS 425C



Forest Green
PMS 553C



True Navy
PMS 533C



True Red
PMS 200C



True Royal
PMS 7687C



White
PMS WHITE