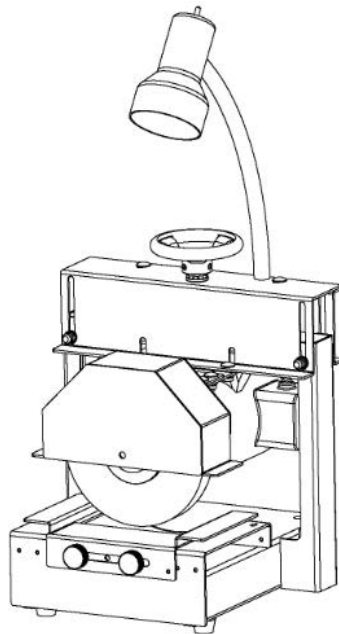




Bradley Blade Sharpener Model S105

Owner's Manual and Parts List



www.BradleyMowers.com

Havener Enterprises, Inc.
368 S. Michigan Ave.
Bradley, IL 60915
815.935.8383 opt 2
info@bradleymowers.com



Rev 8.2018

TABLE OF CONTENTS

ABOUT THIS MANUAL	2
SAFETY INFORMATION	3
OPERATION OF BLADE SHARPENER	4
MAINTAINING YOUR BLADE SHARPENER.....	5
ILLUSTRATED PARTS LIST.....	5
Parts List Bradley Blade Sharpener Model: S105	6
WARRANTY STATEMENT.....	7
NOTES.....	8

ABOUT THIS MANUAL

Congratulations on the purchase of your new Bradley Power Plus Blade Sharpener. We are confident that this Blade Sharpener will provide you with years of excellent performance, durability, and trouble free service when operated and maintained as directed in this Manual.

This owner's manual is considered a permanent part of the Bradley Power Plus Blade Sharpener. It must be available to all of the operators and/or person(s) servicing the Blade Sharpener. Should the unit be resold, this manual must remain with the unit.

All information, illustrations and specifications contained in this manual were in effect at the time of publication. The Manufacturer reserves the right to change, modify, and/or discontinue specifications and/or design without notice. Please contact your authorized dealer before operating and/or servicing the equipment if there is a change that has been made to your Blade Sharpener that is not shown or reflected in this manual.

Should you ever have any questions regarding the operation, maintenance, or safety of your Blade Sharpener, please contact your authorized dealer who has been trained on the operation and servicing of this unit.

A space has been provided below to record information about your new Blade Sharpener. Please take time to record such information for future reference, especially when you contact an authorized dealer with questions.

If you did not receive your warranty registration, contact your dealer immediately!

Date Purchased: _____

Model Number: S105

Purchased From: _____

SAFETY INFORMATION

Read This Manual Carefully And Thoroughly Before Operating The Blade Sharpener!



DANGER Indicates an imminently hazardous situation which, if not avoided, will result in death or serious injury.



WARNING Indicates a potentially hazardous situation which, if not avoided, could result in death or serious injury.



CAUTION Indicates a potentially hazardous situation which, if not avoided, may result in minor or moderate injury. It may also indicate an unsafe practice.

CALIFORNIA PROPOSITION 65



WARNING Crystalline Silica from bricks, cement, and other masonry products may be harmful to your health as determined by California Proposition 65. When using sharpener wheel devices, it is recommended that you wear the correct NIOSH approved respirator.

GENERAL SAFETY RULES



Failure to follow these rules may result in serious injury.

1. Read and understand the owner's manual.
2. Never allow anyone to operate the Blade Sharpener that has not read and fully understood the owner's manual. Operators must give their full attention while using the Blade Sharpener.
3. Wear protective clothing. Do not wear clothing or jewelry that will entangle in the rotating wheel.
4. Wear safety glasses with side shields to reduce the risk of injury from thrown objects or dust particles.
5. Wear a NIOSH approved respirator for the type of sharpener wheel you are using.
6. Use the appropriate hearing protection if required. Refer to OSHA standards.
7. Check for damaged parts before using the machine. Do not use the machine if any parts are damaged.
8. Be certain that the wheel guard is in place.
9. Feed the work piece against the direction of the rotating sharpener disk.
10. Always use this Blade Sharpener in a well ventilated area.
11. Remove dust particles from your skin after each use.
12. Use only wheels suitable for 3600 rpm of rotation speed. Wheels must not be greater than 8" dia.
13. Use only wheels that have a 5/8" bore. Do not modify sharpener wheel bores or the mounting shaft diameter to accommodate other sharpener wheel bores.
14. Inspect the sharpener wheel before each use. Do not use cracked or damaged sharpener wheels.
15. Do not stand in the direct line of the wheel for the first minute after turning on.
16. Do not use the side of the sharpener wheel at any time.
17. Be certain that the motor switch is in the "off" position before plugging in the Blade Sharpener.
18. Outside of the USA, check with local and national codes for the required safe use and electrical requirements.



DANGER Do not operate this machine in the rain or in damp locations. Do not remove the grounding plug or bypass the grounding plug with an electrical adaptor.

UNPACKING, INSPECTION, and FIRST START-UP

After unpacking the **S105** Blade Sharpener inspect it for any damage or loose components. Nuts, bolts and screws may be tightened with the correct tools. Inspect to see that the Sharpener Wheel is free to rotate without contacting the frame or cover. Be certain that the Sharpener Wheel is not chipped or cracked. Be certain that the electrical cord has no sign of damage such as cut insulation or exposed wires. A damaged electrical cord must be replaced. Do not stand in front of the Sharpener Wheel when turning the machine on for the first time.

ADJUSTING THE WHEEL HEIGHT



Adjustment Knobs



Adjustment Wheel

CAUTION

1. When adjusting the wheel height by the handle, loosen bolts on both sides of the handle; then turn the handle to adjust the wheel height.
2. After adjusting the wheel height, tighten bolts on both sides of the handle.
3. After adjustment, ensure that bolts on both sides are securely tightened before operating the machine.

OPERATION OF BLADE SHARPENER

WARNING

Never operate the Blade Sharpener unless the Wheel Guard is properly in place. Operating without the guard in place can cause serious injury.

1. Turn on the Blade Sharpener, selecting the direction of rotation based on the cutting surface you will be using.
2. Allow the Sharpening Wheel to rotate for one minute before using it, to be certain that the wheel has not been severely damaged.
3. Be certain to hold the work piece firmly such that any sudden or unexpected movements will not cause personal injury.
4. Feed the work piece into the direction of the rotating wheel.
5. Work piece may become hot after it has touched the Sharpening Wheel.

MAINTAINING YOUR BLADE SHARPENER

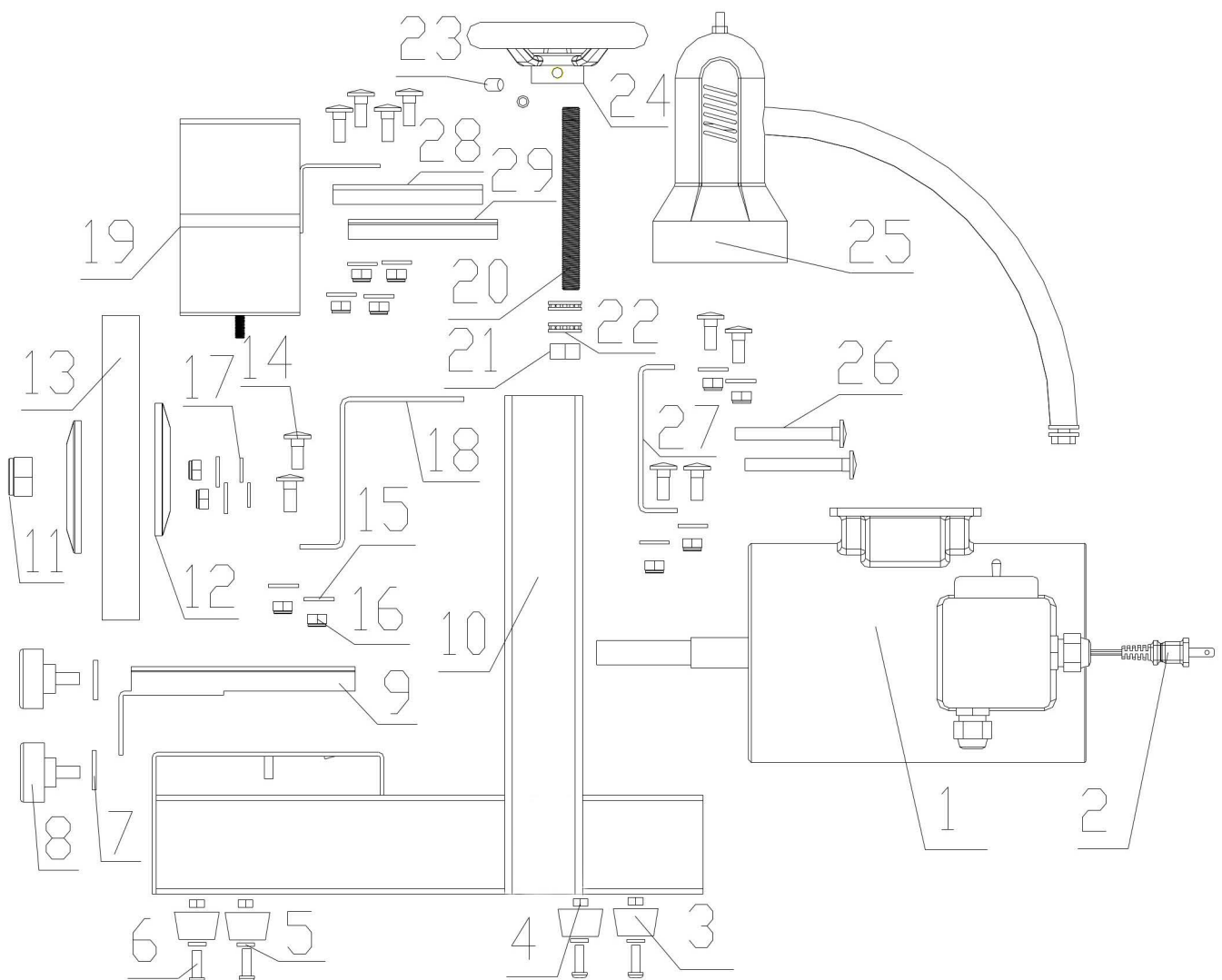
⚠ CAUTION

To minimize the chance of injury always perform maintenance and adjustments with the on/off switch in the "off" position and the motor unplugged.

Routine Maintenance:

1. Keep your Blade Sharpener clean of dust and contamination.
2. The Sharpening Wheel should be inspected for uneven wear that would cause an unbalanced condition while operating.
3. The Sharpening Wheel should be inspected for chips and cracks that could cause debris to become dislodged.

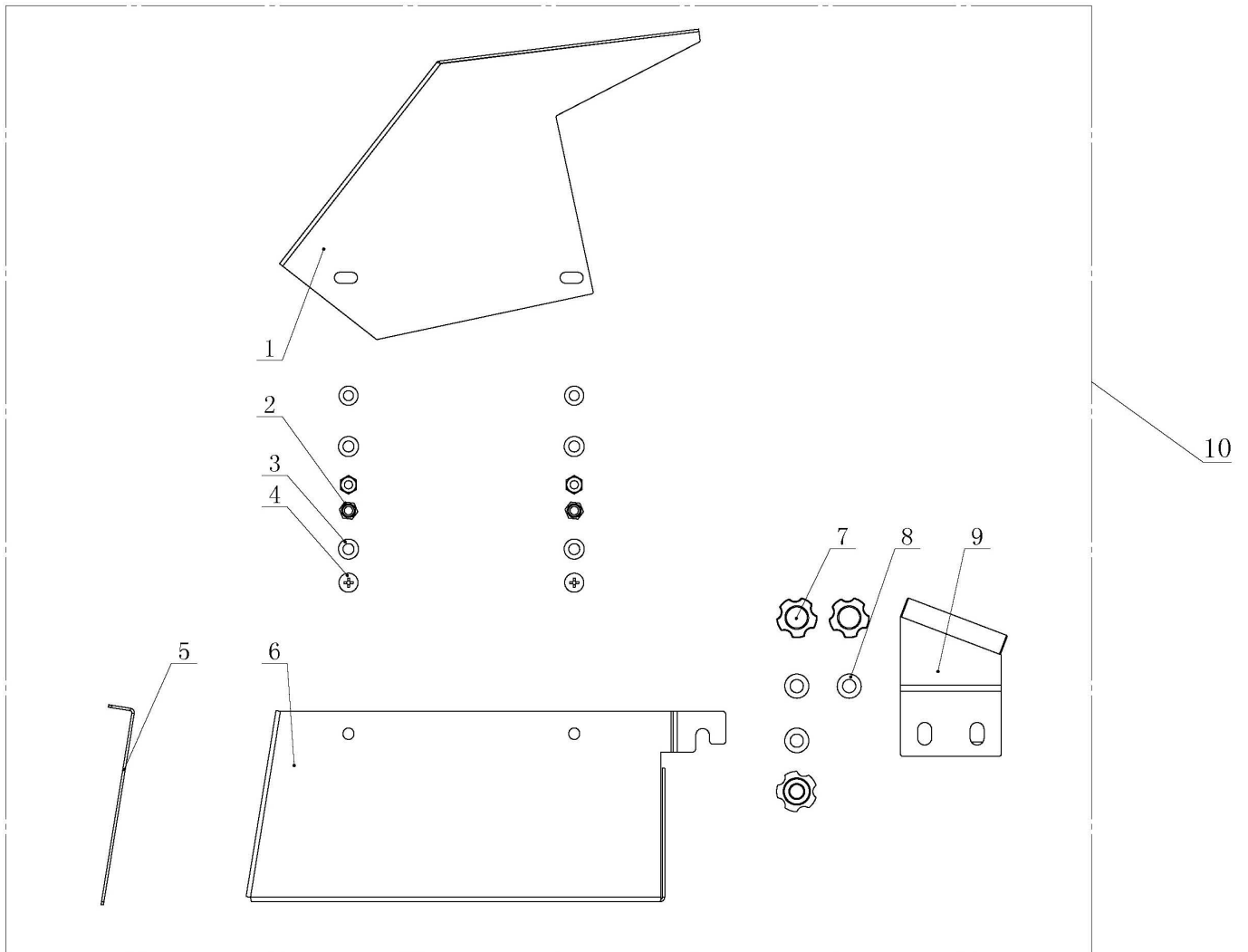
ILLUSTRATED PARTS LIST



Bradley Blade Sharpener Model

S105 Parts List

Ref. No.	Part No.	Description	Quantity	Remark
1	6201	Motor-AC	1	
2	6202	Power cord	1	
3	6203	Feet, Rubber	5	
4	6204	Nut, Hex. M5	5	
5	6205	Washer 5	5	
6	6206	Bolt, M5*16	5	
7	6207	Washer, Flat-M8×25mm O.D.	2	
8	6208	Knob, Knurled-29mm O.D./M8 thread	2	
9	6209	Blade Support	1	
10	6210	Frame	1	
11	6211	Nut, Hex. UNF5/8-18, Nylock	1	
12	6212	Flange, $\phi 5/8$ "	1	
13	6213	Wheel, Grinding- $\phi 5/8$ ", Bore×8" O.D.	1	
14	6214	Square neck bolt M8×20mm Long	10	
15	6215	Washer, Flat-M8×20 O.D.	12	
16	6216	Nut, Hex.-Nylock M8	12	
17	6217	Washer, Nylon M8 ×20 O.D.	2	
18	6218	Front Motor Support	1	
19	6219	Cover, Wheel	1	
20	6220	Rod, Thread-M12×1.25x120mm Long	1	
21	6221	Nut, Hex-M12×1.25	1	
22	6222	Bearing	2	
23	6223	Screw, Hex. Socket-M8×10mm Long	2	
24	6224	Height Adjustment Wheel-M12 Thread	1	
25	6225	Lamp	1	
26	6226	Square Neck Bolt M8×70mm long	2	
27	6227	Rear Motor Support	1	
28	6228	Bracket, Left	1	
29	6229	Bracket, Right	1	
30	6230	Wrench	1	not shown
31	6231	Label: "Always Stand In Front"	1	not shown
32	6232	Label: "Maintain Gap"	1	not shown
33	6233	Label: "Forward"	1	not shown
34	6234	Label: "Reverse"	1	not shown
35	6235	Label: "Bradley"	1	not shown
36	6236	Label: "Warning-For your own safety:"	1	not shown
37	6237	Light Bulb (not included)	1	not shown



Ref. No.	Park No.	Description	Quantity	Remark
1	6241	Top Cover	1	
2	6204	Nut, Hex.M5	4	
3	6205	Washer 5	4	
4	6242	Bolt, M5X12	4	
5	6243	Rear Cover	1	
6	6244	Base	1	
7	6238	Knob Quincunx 1/4-20	3	
8	6239	Nut Hex.M6	3	
9	6240	Blade Support	1	
10	S640	Dirt Collector & Mulch Blade Adaptor Kit	1	

WARRANTY STATEMENT

LIMITED WARRANTY: Havener Enterprises, Inc. warrants that the above product is free from original defect in workmanship and material (excluding the stone) for 12 months from date of purchase. Warranty is void if product has been damaged through causes not arising out of defects in material or in workmanship. Bent parts of product coating and paint are specifically excluded from this warranty. Havener Enterprises, Inc disclaims any consequential damages, arising from the breach of any warranty. (Some states do not allow the exclusion of consequential damages, so the above disclaimer may not apply to you.) During the above mentioned warranty period, the product will either be repaired or replaced with a new or reconditioned model of an equal equity (at Havener Enterprises, Inc's option) when the product is returned (prepaid and insured) with a copy of the original retail invoice, to Havener Enterprises, Inc., 368 S Michigan Ave, Bradley, IL 60915. Phone: 815.935.8383 Opt. 2

Havener Enterprises, Inc. • 368 S Michigan Ave • Bradley, IL • 60915 www.bradleymowers.com



BRADLEY MOWERS PRODUCT REGISTRATION

CUSTOMER INFORMATION

Name: _____

Business Name: _____

Address: _____

City: _____ State: _____ Zip: _____

Phone Number: _____ Fax Number: _____

Email Address: _____

DEALER INFORMATION (place of purchase) *required

Dealer's Name: _____

Dealer's Address: _____

City: _____ State: _____ Zip: _____

Phone Number: _____

(The remaining dealer information will help you get warranty service faster should you need it.)

PRODUCT INFORMATION

Product Name and Model Number: _____

Serial Number: _____

Engine/Motor Brand and Size: _____

Engine Serial Number: _____

Engines, hydraulic pumps, and batteries are warranted through their respective manufacturers. Please contact the manufacturer for more details.

Signature _____ Date of Purchase: _____

KEEP YOUR RECEIPT WITH A COPY OF THIS REGISTRATION FORM

Mail your completed form to:
Havener Enterprises, Inc.
368 S. Michigan Ave.
Bradley, IL 60915

Email your completed form to:
info@bradleymowers.com

Fax your completed form to:
888.785.1348

Complete your registration form online at www.bradleymowers.com

Warranties should be performed by an authorized Bradley Mowers dealer. All other warranty service requires prior approval.

Your product warranty is only valid if this form is completed, signed, and returned to Havener Enterprises, Inc. within two weeks of product purchase. See the warranty statement for more details.

Your information may be collected but never shared outside of Havener Enterprises, Inc. and its subsidiaries.