



Bradley Belt-Drive With Electric
Clutch Walk Behind commercial
Mower 32" • 36"



OWNER'S MANUAL & PARTS LIST

www.BradleyMowers.com



Sep. 10th 2023

TABLE OF CONTENTS

About This Manual	2
Warranty Statement	3
SAFETY INFORMATION	4
Training	4
Before Use of Equipment	4
Operation of Equipment	5
Assembly Instructions	6-18
OPERATING THE MOWER	19
Starting The Engine	20
Going Forward	20
Turning The Mower	21
Stopping The Mower	21
Mowing	21
Changing The Height Of Cut	22
Measuring The Height Of Cut	22
Removing And Adjusting Blades	22
Adjusting Front Wheels	22
GENERAL MAINTENANCE	24
Maintenance Schedule	24
Fuel	25
Engine Oil	25
Air Filter	25
Tire Pressure	25
Blade	25
Cleaning The Mower	25
Lubrication Points	26
SERVICE ADJUSTMENTS	27
Wheel Brake Adjustment	27
Engine To Transmission Belt Adjustment	28
TROUBLE SHOOTING	29-30
Engine assembly	32-33
Frame Assembly	34-35
Front Deck Assembly	36-37
Rear Wheel Assembly	38
Front Caster Assembly	39
Transmission Assembly	40-41
Handle control Assembly	42-43
Rear Deck Assembly	44-45
Label ..	46-47
Fuel Tank Assembly	48
Electrical Diagram	49
Electrical Diagram	50
Bradley Mower Product Registration	51

About This Manual

This owner's manual is considered a permanent part of the mower. It must be available to all of the operators and/or person(s) servicing the mower. Should the mower be resold, this manual must remain with the mower.

All information, illustrations, and specifications contained in this manual were in effect at the time of publication. The mowers reserves the right to change, modify, and/or discontinue specifications and/or design without notice. If there is a change that has been made to your mower which is not shown or reflected in this manual, please see your authorized the mower dealer before operating and/or servicing the equipment.

Congratulations on the purchase of your new the commercial mower. We at the mowers are confident that this mower will provide you with years of excellent performance, durability, and trouble free service when operated and maintained as directed in this manual.

Should you ever have any questions regarding the operation, maintenance, or safety of your mower, please contact your authorized the mower dealer who has been specially trained on operation and service of Red Hawk mower.

A space has been provided below to record information about your new the mower.

Please take time to record such information for future reference, especially when you contact an authorized the mower dealer with questions.

Date Purchase:

Model Number:

Serial Number:

Purchased From:

Warranty Statement

The mowers are warranted for two (2) years from the original date of purchase against defects in material or workmanship, when operated and maintained in accordance with the mowers Owner's Manual. Commercial operators: first year is parts and labor; second year is parts only. Residential operators: first two years parts and labor; third year parts only.

The engine, transmission, and battery are warranted by their respective manufacturers. Havener Enterprises, Inc. (Havener) will replace or repair, free of charge, any part of the original equipment returned to us or our authorized servicing representative with transportation or postage prepaid and which upon examination shall be defective. The cost of replacing items that are subject to normal wear, such as but not limited to: air filters, belts, blades, oil filters, and tires, will be borne by the purchaser/owner unless such wear was caused by a defect in material and workmanship.

This warranty does not cover any mower that has been subject to neglect, negligence, misuse, or accident, or that has been operated in any way contrary to the operating instructions as specified in the Owner's Manual. This warranty does not cover any mower that has been altered or modified changing performance or durability. In addition, the warranty is not extended to repairs made necessary by the use of parts or accessories which, in the reasonable judgment of the mowers are compatible with the mower or adversely affect its operation, performance, or durability. This warranty is not transferable.

Havener assumes no responsibility or incidental, consequential, or other damages including, but not limited to: expense for gasoline, expense of delivering the mower to a the mower authorized dealer and expense of returning it to the owner, mechanic's travel time, telephone or communication charges, rental of a like product during the time warranty repairs are being performed, travel, loss or damage to personal property, loss of revenue, loss of the use of the time or inconvenience.

There are no other expressed or implied warranties and liability for consequential damages under this warranty and are excluded to the extent exclusions are permitted by law. No warranty service will be authorized until your registration card has been received by the mower.

SAFETY INFORMATION

Read This Manual Carefully And Thoroughly Before Operating The Mower!

Training

1. Carefully and thoroughly read the owner's manual. Allow adequate time to fully understand the controls and operation of the equipment.
2. Never allow anyone to operate the mower that has not read and fully understood the owner's manual. Do not carry passengers. Avoid mowing while people, especially children and pets are nearby, since

Before Use of Equipment

Operator:

Wear protective clothing while mowing. Long trousers and safety glasses will help reduce the risk of injury from thrown objects. It is recommended that steel toe shoes with aggressive soles or some other type of substantial footwear be worn to help protect your feet and maintain traction on slopes or uneven ground. Always wear hearing protection.

Mowing Area:

Thoroughly inspect the area where the equipment is to be used. Look for items such as stones, sticks, wire and other foreign objects. When struck by the mower, these and other objects may become projectiles that could lead to serious injury and/or death.

Mower:

For your safety and the long life of your mower, always inspect the mower before each use. Before inspection, make sure it is on a flat and level surface, the blades are disengaged, the ignition switch off with the key removed, and the spark plug wire is off of the spark plug(s) and hidden so that accidental contact can not be made.

General Condition:

- Walk around the mower looking for any fluid spills or leaks on or underneath the mower. Remove any and all excessive debris, dirt, and/or fluids.
- Look for signs of damage or excessive wear. Check the tightness of all nuts, bolts, pins, and screws. Tighten any that may be loose and replace any that may have been lost during use.
- Be sure the safety interlock controls are operating properly so that the engine can not be started unless the ground speed control lever is in neutral and the blades disengaged.
- Check the mower blades for any damage or abnormal wear and replace in sets so that they are balanced.
- Check the tire pressure on all four tires. See page 15 for details.
- Check all belts for proper wear and correct tension. See pages 17-19 for details.
- Check engine oil and air filters as recommended in the engine manufacturers operators manual.

Operation of Equipment



DANGER: GASOLINE IS HIGHLY FLAMMABLE AND EXPLOSIVE. DO NOT ADD FUEL WHILE THE ENGINE IS RUNNING OR IS HOT. KEEP OPEN FLAMES, SPARKS, AND HEAT AWAY FROM THE FUEL AND STORE FUEL IN CONTAINERS SPECIFICALLY DESIGNED FOR THAT PURPOSE. ADD FUEL OUTDOORS ONLY AND IF THE FUEL IS SPILLED, DO NOT START THE ENGINE. MANUALLY PUSH THE MOWER AWAY FROM THE SPILL AND IMMEDIATELY WIPE UP.

Do not operate the engine in a confined space where dangerous carbon monoxide fumes can collect. Carbon monoxide is odorless, tasteless, and can be fatal.

Mow only in daylight.

Make sure the mower is in neutral and the blades are disengaged before attempting to start the engine.

Do not stop or start suddenly when going uphill. Never use riding attachments on slopes since there is an increase risk that they might roll over.

Avoid steep slopes and use extreme caution when changing directions or speed when operating on a slope.

Be extremely careful when operating on a slope or when the grass is damp or wet. Reduced traction could cause sliding.

Never mow by pulling the mower back towards you...you might slip.

Watch for traffic when crossing surfaces other than grass, (i.e. transporting,) loading a trailer vehicle, or when the mower is not in use.

Never operate the mower with defective guards, shields, or without the safety devices securely mounted in place.

Never direct discharge of material toward bystanders nor allow anyone near the mower while in operation.

Do not change the governor settings or over speed the engine.

Always stop the engine whenever you leave the mower, even for a moment.

To help reduce the risk of a fire hazard, keep the engine and the area around the engine free of grass, leaves, or any other type of foreign material.

Beware of cutting edges. Always wear gloves for safety when performing blade maintenance activities.

Beware on multiple blades units since the rotation of one blade may cause the rotation of the other blade.

Do not store or operate the mower with the grass chute deflector in raised position. Serious injury could occur.

Assembly Instructions

Remove the fuel tank from the mower, unbolt the crate, removing the top and side rails
Tools needed: 17mm or 5/8" wrench/ratchet



Remove the bolts that securing the back of the mower



Unpack the mower



Remove parts packages A and B

Parts A



Parts B



Bradley Belt-Drive With Electric Clutch Mower Parts

Remove the handlebar assembly



Handlebars



Remove the bolts securing the deck to
The frame

Bradley Belt-Drive With Electric Clutch Mower Parts



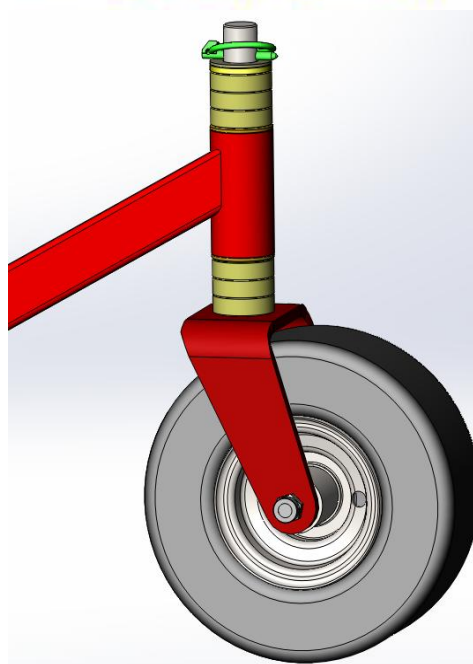
Prepare the 2 front wheel assemblies



Install the front
Wheel yoke

Tools needed:
17mm or 5/8"
wrench/ratchet

Bradley Belt-Drive With Electric Clutch Mower Parts



Install the front wheels



Remove the mower
From the crate



Mower



Base crate

Bradley Belt-Drive With Electric Clutch Mower Parts



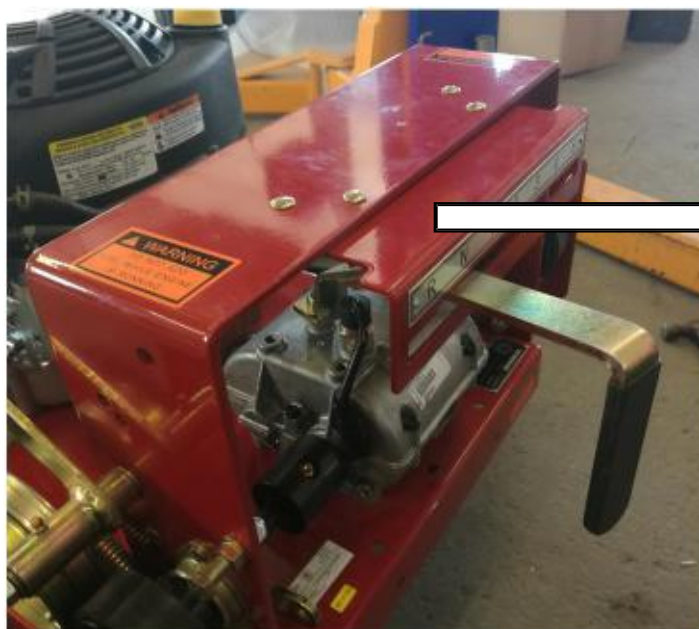
32 BDE gear shift lever



36 BDE gear shift lever



Install the gear shift lever



Install the shifting position plate

Bradley Belt-Drive With Electric Clutch Mower Parts



Remove the fuel tank pads from the manual package
Adhere the pads to the fuel tank; a spray adhesive is recommended



Fuel tank straps



Install the fuel tank straps

Tools needed: 10mm or 3/8"
wrench/ratchet

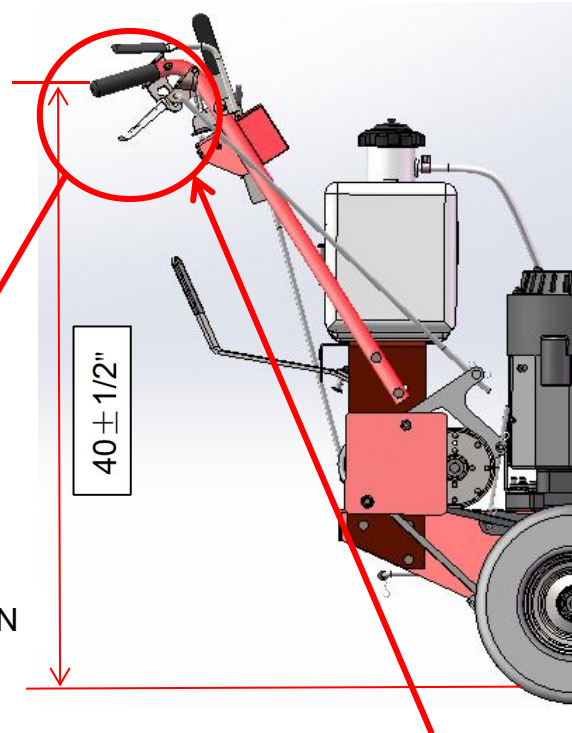
Bradley Belt-Drive With Electric Clutch Mower Parts

Fuel line hose

Vent hose



Connect the line
hose vent hose



Connect the handle with the frame, NO NOT TIGHTEN



Measure the
distance from the
handle to the ground,
make sure the height
is 40-1/2" and then
tighten the handle
mounting bolts

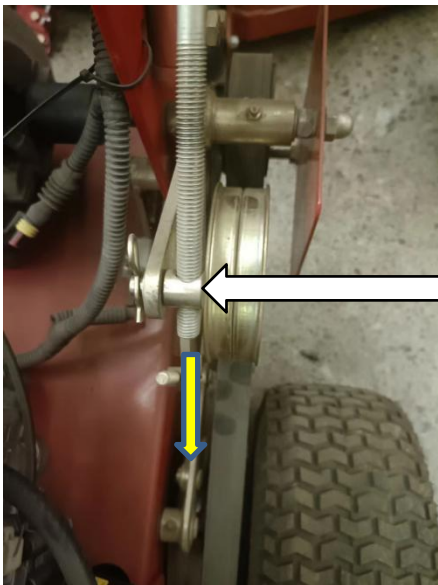
Bradley Belt-Drive With Electric Clutch Mower Parts



Release the grip



Adjust the tension by turning the rod clockwise or counterclockwise



Rotating the rod connector to adjust the tension of the belt, if the belt is loosen, remove the cotter pin and disconnect the rod connector with the diamond bracket and then follow the direction of the yellow arrow rotating the rod connector and then reconnect the rod connector with the diamond bracket, put on the cotter pin make sure the idler pulley can fully press on the belt.

Same on the other side.



PTO

Bradley Belt-Drive With Electric Clutch Mower Parts



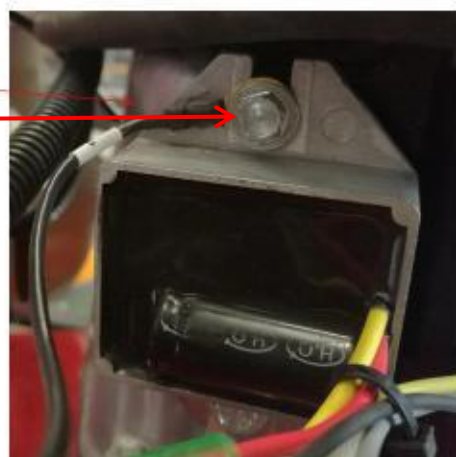
Connect the transmission
safety switch to the plug
and zip tie it



the wire connect to the electric
clutch



Connect the engine wiring



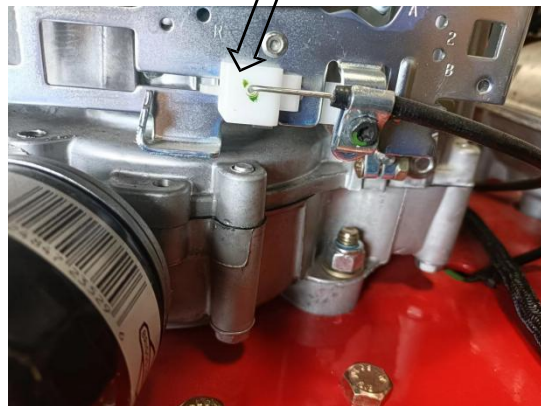
2022 upgrade design

Bradley Belt-Drive With Electric Clutch Mower Parts



Push the throttle control
All the way forward

Connect the throttle cable

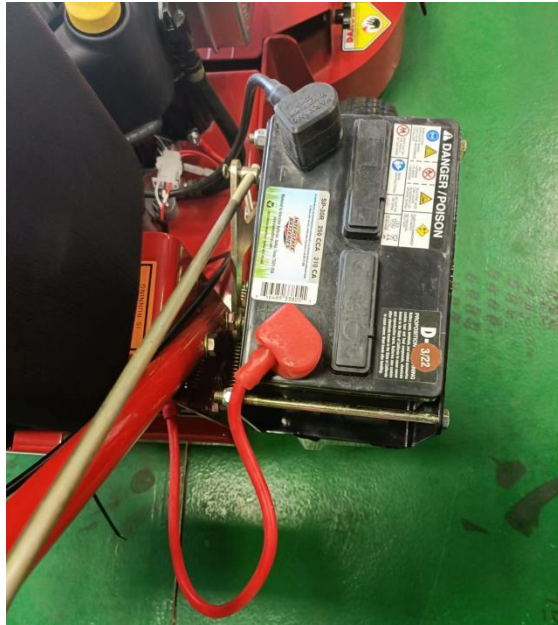
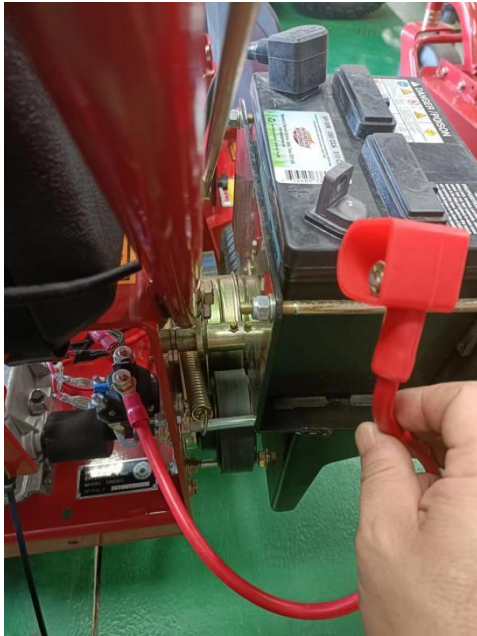


Install grass chute cover



Add engine oil and fuel in accordance
With engine instructions

Bradley Belt-Drive With Electric Clutch Mower Parts



connect the positive line to the battery



Enjoy your new Bradley Mowers lawn mower !

OPERATING THE MOWER

It is recommended that before you operate the mower, you allow adequate time to fully understand the controls and operation of the equipment. When reading this manual, it is recommended that you do so with the equipment nearby for quick orientation, reference of controls and maintenance adjustments.

Operating Controls (figure 1)

Before continuing to read the manual, it is recommended that you take adequate time to identify the controls of the mower.

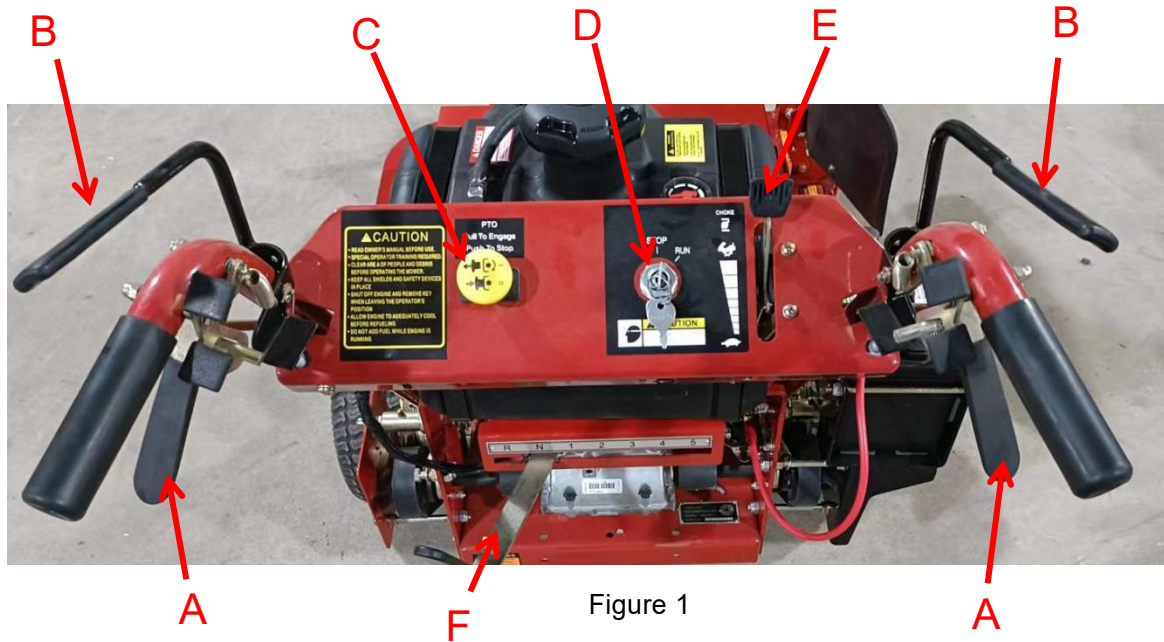


Figure 1

“A” Traction lever locks
“B” Operator presence controls
“C” PTO

“D” Key switch
“E” Throttle/Choke control
“F” Gear shift lever

Bradley Belt-Drive With Electric Clutch Mower Parts

Starting The Engine:



DANGER: DO NOT OPERATE THE ENGINE IN A CONFINED SPACE WHERE DANGEROUS CARBON MONOXIDE FUMES CAN COLLECT. CARBON DIOXIDE IS ODORLESS, TASTELESS, AND CAN BE FATAL.

After going through the steps as discussed on pages (4) and (5), you are now ready to start the engine. NOTE: THIS UNIT WAS SHIPPED WITHOUT THE GAS, BE SURE TO ADD FRESH GAS AND TO DOUBLE CHECK THE OIL IN THE ENGINE BEFORE ATTEMPTING TO START THE MOWER.


1. Make sure that the traction control lever are in the neutral position (figure 2)
2. Make sure that the gear shift lever is in the neutral "N" position (figure 3)
3. Make sure that the PTO switch is not engaged. NOTE: The safety interlock system will prevent the engine from being started if the PTO switch is engaged and the gear shift lever is not in the neutral "N" position.
4. Slide the engine speed control to the  position, or to "CHOKE" if engine is cold.
5. For Electric Start engines, turn the key clockwise to the "Start" position. Once started, the key will return to the "Run" position. Note: Do not keep the key in the "Start" position more than a few seconds. If engine does not start, wait 15 seconds before trying again. Turn the key clockwise to the "RUN" position.
6. When the engine starts to run, slowly return the engine speed control out of "CHOKE" to the desired engine speed.



Figure 2



Figure 3

Going Forward:

CAUTION: Become totally familiar with the operation and characteristics of the mower before attempting to actually mow with it.

1. Making sure that the traction control levers are in the neutral position, push down and hold the operator presence control lever "A" on the handle grips with one hand (figure 4).
2. With the other hand, move the gear shift lever to the desired speed. "1" is slow and "5" is for transporting the mower between mowing areas. It is recommended that you start out in "1" and then increase your ground speed to match the mowing conditions.
3. Release the traction control lever locks by squeezing up both traction control levers "C" only as much as needed while at the same time applying forward pressure in the traction control lever locks "B" with your thumbs.
4. Slowly and evenly, let both traction control levers down simultaneously and the mower will start to go forward. NOTE: If the operator lets go of both operator presence control levers while either the blade control lever is in "ON", and/or the gear shift control lever is out of the neutral position the safety interlock system will stop the engine. To restart the mower, reset all controls to the "OFF" position and neutral "N" positions.

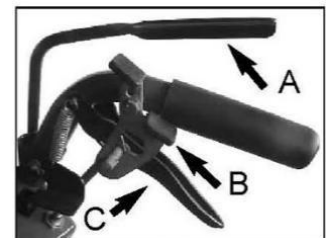


Figure 4

Bradley Belt-Drive With Electric Clutch Mower Parts

Turning The Mower

To turn the mower in the direction you want to go, gently squeeze the side's traction control lever (i.e. to go right, squeeze the right traction control lever; to go left, squeeze the left traction control lever). The more a particular traction control lever is squeezed, the sharper a turn the mower will make.

Stopping The Mower

To stop the mower, gently and evenly squeeze up on both of the traction control levers until the mower comes to a complete stop. Then with your thumbs, push down on the traction lever locks until the levers are securely locked in the neutral position. While still holding down with one hand the operator presence controls, move the gear shift lever to the "N" position with the other hand. If the operator is leaving the operator's position behind the mower for any reason, disengage the blades, shut the engine off, and remove the key.

If you are leaving the operators position, try to park the mower on level ground. If it is not possible to do such, be sure to block the wheels to prevent the mower from rolling away.

1. Slowly and evenly squeeze up on both control levers until the mower comes to a complete stop and then with your thumbs, push down on the traction lever locks until the levers are securely locked in the neutral position.
2. While still holding down the operator presence control with one hand, use the other and pull the blade control lever to the "OFF" position.
3. Shift the gear shift lever to the reverse "R" position.
4. Release the traction control lever locks by squeezing by both traction control levers only as much as needed while at the same time, applying forward pressure on the traction control lever locks with your thumbs.
5. Slowly and evenly, let both traction control levers down simultaneously and the mower will start to go in reverse. Always use extreme caution when moving the mower backwards and never move the mower downhill backwards.
6. To stop the mower, slowly and evenly squeeze up on both control levers until the mower comes to a complete stop and then with your thumbs, push down on the traction lever locks until the levers are securely locked in the neutral position and return the gear shift lever to neutral "N".

Mowing



DANGER: THOROUGHLY INSPECT THE AREA WHERE THE EQUIPMENT IS TO BE USED. LOOK FOR ITEMS SUCH AS STONES, STICKS, WIRE, AND OTHER FOREIGN OBJECTS. WHEN STRUCK BY THE MOWER, THESE AND OTHER OBJECTS MAY BECOME PROJECTILES THAT COULD LEAD TO SERIOUS INJURY AND OR DEATH. CLEAR AREA OF ALL DEBRIS AND KEEP PEOPLE AND PETS AWAY.



DANGER: DO NOT OPERATE THE MOWER WITH DEFECTIVE GUARDS, SHIELDS, OR WITHOUT THE SAFETY DEVICES SECURELY IN PLACE.

For the highest quality of cut and performance, always mow with the engine at full throttle. Quality of cut may be determined by the ground speed and speed of the mower. Generally, the slower the mower travels across the terrain, the better the cut.

1. With the mower at the beginning of the area to be mowed and traction control levers in the neutral position, hold down with one hand the operator presence control.
2. With the other hand, slowly push the blade control lever forward to the "ON" position.
3. Move the gear shift lever to the desired speed. Always begin at a slow ground speed and increase only as the condition of the terrain warrants.
4. Slowly and evenly, engage the traction control levers and begin mowing.
5. To stop mowing, slowly and evenly squeeze up on both traction control levers until the mower comes to a complete stop and then with your thumbs, push down on the traction lever locks until the levers are securely locked in the neutral position. Return the gear shift lever to the neutral "N" position.
6. Pull the blade control lever back to the "OFF" position.

Bradley Belt-Drive With Electric Clutch Mower Parts

Changing The Height Of Cut:



DANGER: BEFORE MAKING ANY ADJUSTMENTS AND/OR SERVICING YOUR MOWER, MAKE SURE THE MOWER IS ON LEVEL GROUND, BLADES DISENGAGED, KEYS REMOVED, AND THE ENGINE OFF WITH THE SPARK PLUG WIRE(S) REMOVED FROM THE SPARK PLUGS(S) TO PREVENT ACCIDENTAL CONTACT.

When your bradley mower is shipped from the factory, the mowing height is set at 2-1/2". The mowing height may be raised or lowered using a combination of front wheel spacers and blade bolt assembly spacers. It is recommended that you first set your height of cut to the highest level using the blade spacers and then lower the height of cut using the front wheel spacers.

Measuring The Height Of Cut:



DANGER: BEFORE MAKING ANY ADJUSTMENTS AND/OR SERVICING YOUR MOWER, MAKE SURE THE MOWER IS ON LEVEL GROUND, BLADES DISENGAGED, KEYS REMOVED, AND THE ENGINE OFF WITH THE SPARK PLUG WIRE(S) REMOVED FROM THE SPARK PLUGS(S) TO PREVENT ACCIDENTAL CONTACT.

CAUTION: Beware of the cutting edges on the blades. The rotation of one blade may cause the other blade(s) to rotate. Always wear work gloves when handling blades.

1. Park the mower on level ground.
2. With the PTO switch disengaged, the engine off with the key removed, and the spark plug wire (s) removed from the spark plug(s), reach through the discharge chute and slowly rotate the blade so that the length of the blade is going from the front of the mower towards the rear.
3. Using a tape measure or small ruler, measure the distance from the front tip of the blade's cutting edge to the ground. As a general rule, if measuring the cutting height on a hard surface such as concrete, the mower will usually mow about 1/4" lower in grass due to the weight of the machine.

Removing And Adjusting Blades:

CAUTION: Beware of the cutting edges on the blades. The rotation of one blade may cause the other blade(s) rotate. Always wear work gloves when handling blades.

1. Park the mower on level ground and block the rear wheels to prevent accidental rollback. Raise the front end of the mower using a jack stand
2. Using impact driver with 24mm socket to loosen the blade bolt C.
3. Slide the blade bolt down through the mower deck and out.
4. To raise the blades to the height desired, remove the appropriate amount of spacers from the blade bolt. Example: If the height of cut needs to be raised 1/2", move two (2) of the 1/4" spacers "B" on each blade from underneath the mower (Figure 5) to the top of the mower (Figure 6).
5. Reinsert the blade bolt through the cutting deck.
6. Install the blade spacers that were removed, back onto the blade bolt followed by the nut and tighten (Figure 5). **IMPORTANT:** The amount of spacers should always be the same on each blade bolt. Never put the spacers below the blade.

Adjusting Front Wheels: (refer to Figure 7)

1. Raise and support the front of the mower with a jack stand.
2. While supporting the front wheel with one hand, remove the flip pin from the wheel shaft.
3. Remove the wheel from the front wheel support arm being careful not to loose the spacers.
4. Remove the amount of spacers desired to lower the height of cut.
5. Reinsert the wheel through the support arm.
6. Reins tall the spacers on the top that were removed from the bottom and then secure with the flip pin.
7. To raise the height, repeat steps 1-3, but take the spacers from the top of the wheel support arm, and put them on the bottom.

Bradley Belt-Drive With Electric Clutch Mower Parts

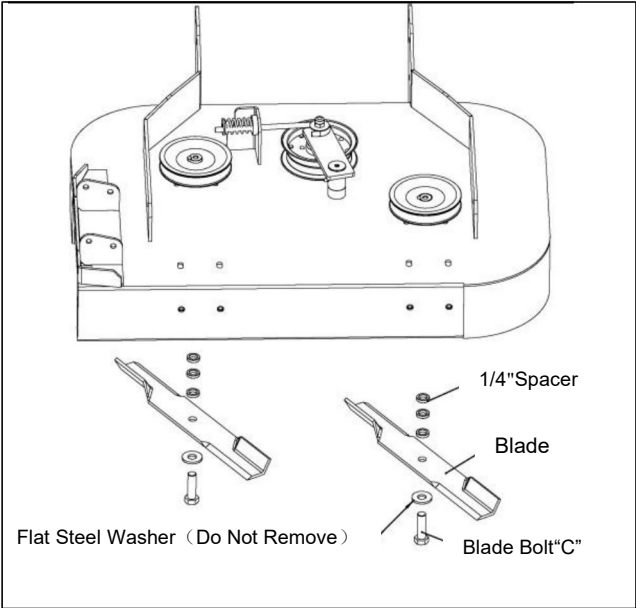


Figure 5

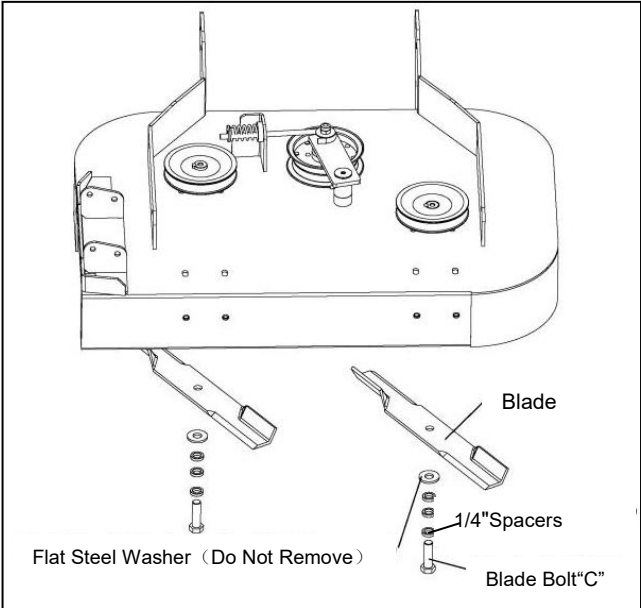


Figure 6

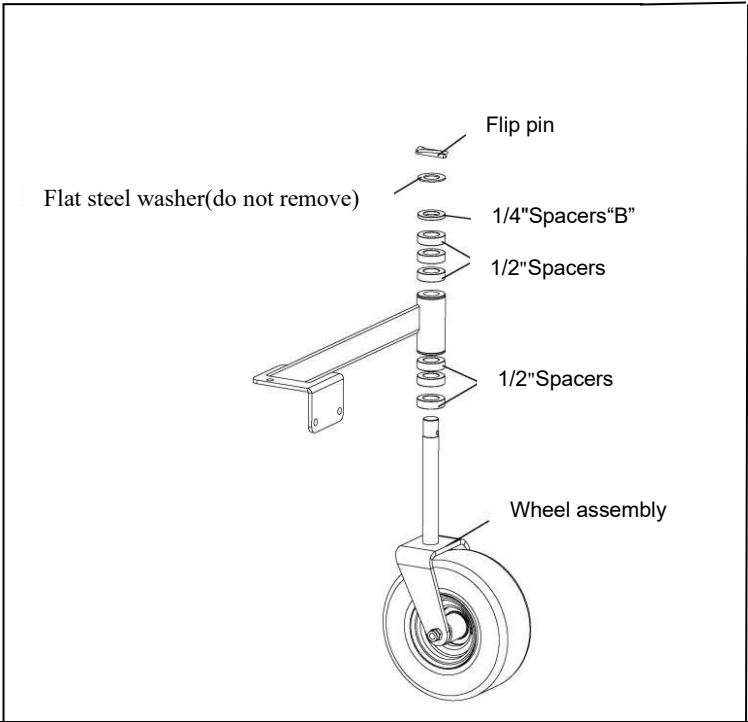


Figure 7

GENERAL MAINTENANCE

Proper maintenance and adjustment of your Red Hawk mower is necessary to keep the mower in good and safe condition. The maintenance of the mower is the responsibility of the owner/operator and must be performed at regular intervals. When replacing any parts of servicing your mower, be sure to use only genuine Red Hawk mower replacement parts to assure quality and performance of your mower.

DANGER: BEFORE MAKING ANY ADJUSTMENTS AND/OR SERVICING YOUR MOWER, MAKE SURE THE MOWER IS ON LEVEL GROUND, BLADES DISENGAGED, KEY REMOVED, AND THE ENGINE OFF WITH THE SPARK PLUG WIRE(S) REMOVED FROM THE SPARK PLUGS(S) TO PREVENT ACCIDENTAL CONTACT IF ADJUSTMENT OR MAINTENANCE IS BEING PERFORMED AFTER OPERATION OF THE MOWER, ALLOW THE UNIT TO COOL SINCE HEAT BUILD UP COULD CAUSE SEVERE BURNS.

Maintenance Schedule

Item	Procedure	Time Interval				
		Break-in (first 5 hrs)	Every 8 Hours (Daily)	Every 40 hours (Weekly)	Every 100 hours (Bi-weekly)	Every 200 hours (Monthly)
Belts	Inspect (adjust if needed)	•	•			
Blades	Inspect and Sharpen		•			
Engine Air Filter	Inspect (See Engine Owner's Manual)		•			
Engine Cooling Areas	Clean (See Engine Owner's Manual)				•	
Engine Oil	Check(See Engine Owner's Manual)		•			
	Change (See Engine Owner's Manual)	•			•	
Engine Oil Filter	Change (See Engine Owner's Manual)	•				•
Engine Spark Plug (s)	Inspect (See Engine Owner's Manual)					•
Fuel Filter	Replace				•	
Fuel Line	Check				•	
Replace		Every 2 years				
Grease Fittings	Refer to Page 16					
Hardware	Check for proper tightness	•		•		
Mower Main Frame	Remove debris from under belt cover		•			
Safety Interlock	Check Operation and Switches		•			
Tires	Check Air Pressure			•		

Fuel



DANGER: GASOLINE IS HIGHLY FLAMMABLE AND EXPLOSIVE. DO NOT ADD FUEL WHILE THE ENGINE IS RUNNING OR IS HOT. KEEP OPEN FLAMES, SPARKS, AND HEAT AWAY FROM THE FUEL AND STORE FUEL IN CONTAINERS SPECIFICALLY DESIGNED FOR THAT PURPOSE. ADD FUEL OUTDOORS ONLY AND IF THE FUEL IS SPILLED, DO NOT START THE ENGINE. MANUALLY PUSH THE MOWER AWAY FROM THE SPILL AND IMMEDIATELY WIPE UP.

Refer to the Engine Owner's Manual for the type of fuel

Engine Oil

CHECK THE ENGINE OIL BEFORE EACH USE. Refer to the Engine Owner's Manual for the type of oil, oil change intervals, and the proper procedures to check and change oil.

Air Filter

Refer to the Engine Owner's Manual for the recommended maintenance.

Tire Pressure

The recommended tire pressure for the two drive wheels is 28 p.s.i. The recommended tire pressure for the two front wheels is 50 p.s.i. Incorrect tire pressure may cause the mower to pull to one side and/or an uneven cut. Always use caution when filling the tire and never exceed the recommended tire pressure.

Blade

DANGER: BEFORE WORKING ON THE BLADES, MAKE SURE THE ENGINE IS OFF, KEY REMOVED, AND THE SPARK PLUG(S) WIRES REMOVED FROM THE SPARK



PLUG (S) TO PREVENT ACCIDENTAL CONTACT

CAUTION:

Beware of the cutting edges on the blades. Always wear work gloves when performing blade maintenance.

Blades should be inspected on a daily basis for nicks, bends, and or excessive wear. If the blades is worn, cracked, bent, or damaged, replace with a new blade immediately before using the mower. Use only genuine Red Hawk Mower replacement blades since substitute blades may not meet Red Hawk Mower specifications and may be dangerous.

To remove the blades, refer to page 22, section "Removing And Adjusting The Blades."

When sharpening the blades, sharpen only the cutting edges and try to maintain the original angle of the blade.

Do not make the cutting edge "razor sharp" and remove the same amount from each side of the blade so that balance is maintained.

Cleaning The Mower

It is recommended that the mower be cleaned in a daily basis. Excessive accumulation of dirt, debris, oil, etc., causes premature wear on the components and may present a potential safety hazard.

Bradley Belt-Drive With Electric Clutch Mower Parts

Lubrication Points

To assure proper lubrication on moving parts, it is recommended that you lubricate the following components with a high-quality EP2 high temperature based grease or equivalent. Should operation be more severe than normal, the lubrication interval may be than recommended GTR/OPE Grease is the recommended lubricant.



Transmission Output Shaft
(left & right sides)
Every 40 hrs/weekly



Idler Arm Pivot
(left & right sides)
Every 40 hrs/weekly



Wheel Brake Pivot
(left & right sides)
Every 40 hrs/Weekly



Blade Engagement Pivot
(left & right sides)
Every 40 hrs/weekly



Front Caster Support
(left & right sides)
Every 40 hrs/weekly



Front Caster Wheel
(left & right sides)
Every 40 hrs/weekly

SERVICE ADJUSTMENTS

⚠ DANGER: BEFORE MAKING ANY ADJUSTMENTS AND/OR SERVICING YOUR MOWER, MAKE SURE THE MOWER IS ON LEVEL GROUND, BLADES DISENGAGED, KEY REMOVED, AND THE ENGINE OFF WITH THE SPARK PLUG WIRE(S) REMOVED FROM THE SPARK PLUG(S) TO PREVENT ACCIDENTAL CONTACT. IF ADJUSTMENTS OR MAINTENANCE IS BEING PERFORMED AFTER OPERATION OF THE MOWER, ALLOW THE UNIT TO COOL SINCE HEAT BUILD UP COULD CAUSE SEVERE BURNS.

Drive Belt Adjustment: (Refer to Figure 8)

1. Release the right side traction control lever into the engaged position. Move the gear shift lever into first "1" gear, and pull the mower backwards until the mower stops.
2. Remove hair pin cotter "A" and the flat washer from swivel "B"
3. Remove swivel "B" from idler arm "C".
4. Move traction control rod "D" until there is approximately 1/2" clearance between the bottom of the traction control rod and the bottom of the slot in traction control lever lock "A"(figure 9).
5. While holding the rod in place, rotate swivel "B" on the traction control rod "D" until the swivel realigns with the hole in idler arm "C". Push the swivel through the idler arm hole and secure with the flat washer and hair pin cotter. Repeat for the other side.

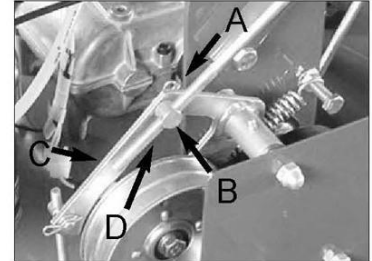


Figure 8

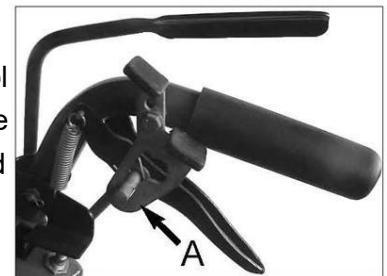


Figure 9

Wheel Brake Adjustment: (Refer to Figure 10)

1. Release the left side traction control Lever into the engaged position.
2. Remove the hair pin cotter "A" from swivel "B".
3. Remove swivel "B" from idler arm "C".
4. To increase the amount of brake, rotate swivel "B" clockwise approximately 2 to 3 turns and insert swivel "B" back into idler arm "C".
5. Check the traction control lever for the proper amount of brake. Should more brake be necessary, repeat steps 3 and 4.
6. Once the proper amount of brake has been achieved, be sure to secure swivel "B" to idler arm "C" with the flat washer and hair pin cotter.
7. Repeat for the other side if needed.

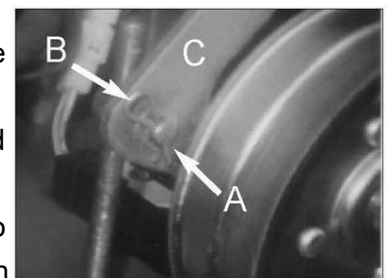


Figure 10

Bradley Belt-Drive With Electric Clutch Mower Parts

Engine To Transmission Belt Adjustment: (Refer to figure11)

1. The engine to transmission belt, located underneath the rear deck, should move $\frac{3}{16}$ with 5 lbs. of pressure applied midway on the belt between the transmission pulley and the engine output shaft pulley.
2. To adjust the belt, loosen nut "A" on idler pulley "B".
3. Slide idler pulley "B" to tighten or loosen and secure in place by tightening nut "A".

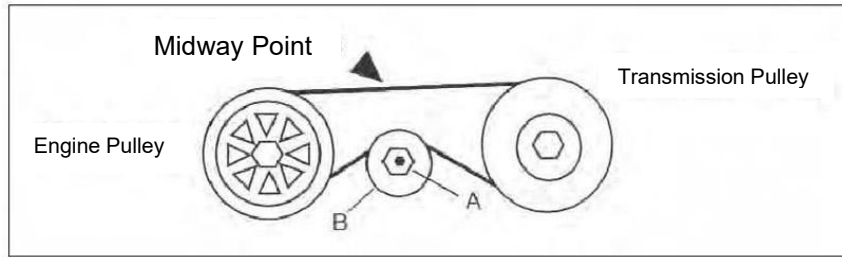


Figure 11

TROUBLE SHOOTING

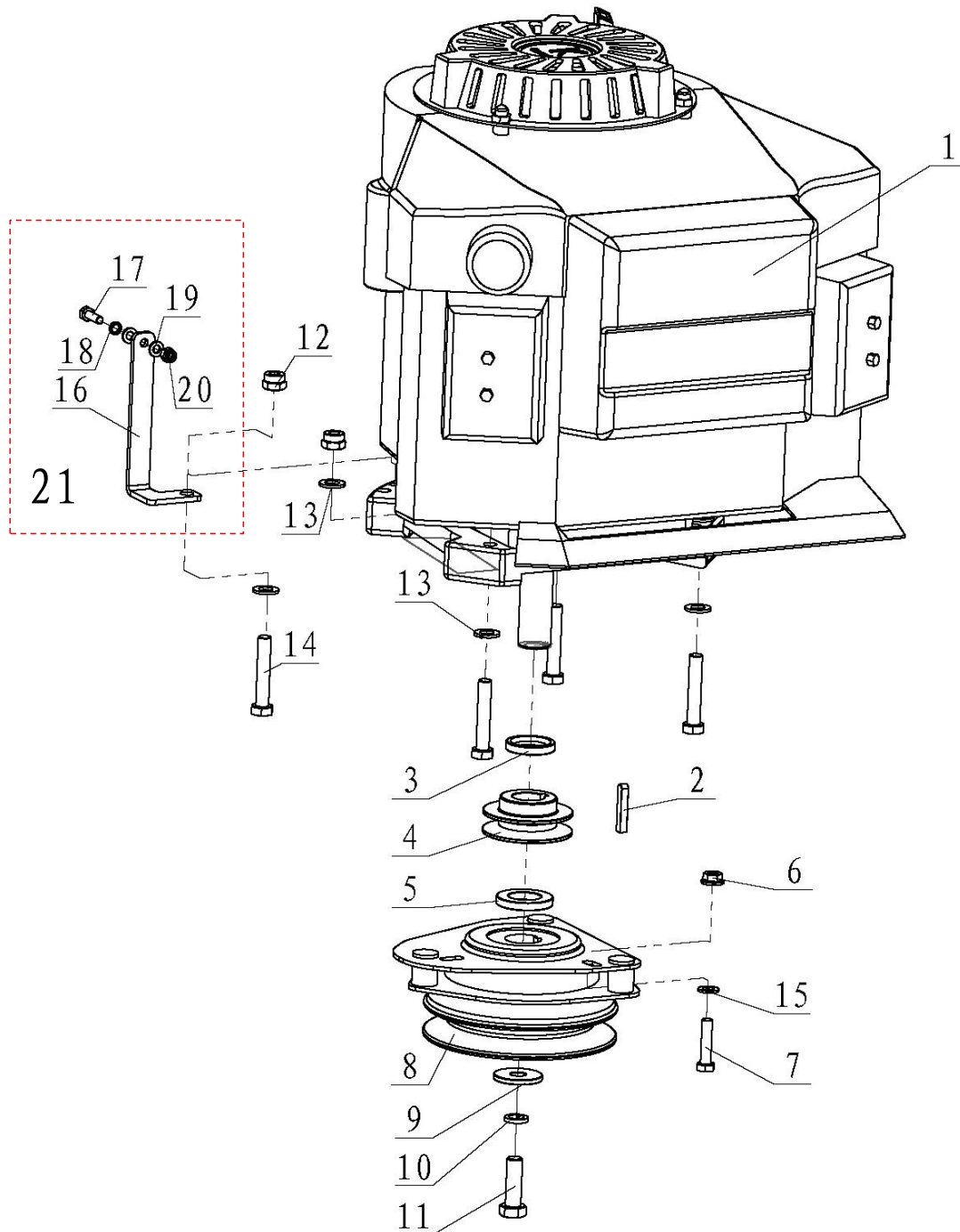
Problem	Possible	Cause Solution
Engine Does Not Start	Key in the OFF position	Turn key to ON
	Transmission shift lever not in then neutral position	Move lever into the neutral (Page 20).
	Blade control not in the OFF position	Move blade control lever to OFF
	Fuel tank empty	Fill fuel tank
	Safety interlock switches out of adjustment	Adjust switches (Page 20)
	Throttle control not in the choke position	Move throttle control to choke
	Spark plug loose or disconnected	Connect spark plug wire
	Bad spark plug	Replace
	Dirty air filter	Replace
	Clogged fuel filter	Replace
	Bad fuel	Drain and refill with fresh fuel
Engine Starts Hard Or Loose Power	Dirt or water in the fuel tank	Drain and clean fuel tank
	Clogged or dirty fuel filter	Replace
	Air filter dirty	Replace
	Faulty spark plug	Replace
	Incorrect oil level	Check and adjust
Engine Overheats	Dirt in fuel line	Clean and replace
	Dirty grass screen	Clean
	Incorrect oil level	Check and adjust
	Dirty air filter	Check and adjust
	Faulty spark plug	Replace

TROUBLE SHOOTING

Problem	Possible	Cause Solution
Mower Does Not Move When Traction Levers Are Released	Transmission is in neutral	Move transmission lever (page20)
	Engine to transmission belt loose	Check and adjust (page 28)
	Incorrect drive wheel belt adjustment	Check and adjust (page 27)
	Drive belts worn or damaged	Check and replace if necessary
Mower Pulls To One Side	Drive belt broken or slipping	Replace or adjust (page 27)
Uneven Cut	Tire pressure not the same in both drive wheels	Check and adjust (page 25)
Blades Do Not Turn	Blade belt broken or slipping Excessive build-up underneath mowing deck	Replace or adjust Check and clean
Rough Cut	Unequal space configuration on blades or front casters	Check and adjust (page 23)
	Ground speed too fast for mowing conditions	Reduce travel speed
	Blades bent	Check and replace (page 22)
	Tire pressure in wheels not equal	Check and adjust (page25)
	Unequal spacer configuration on blades or front casters	Check and adjust (page 23)
	Blades dull	Sharpen or replace (page 25)
	Engine not running 3600 r.p.m.	Move throttle to fast
	Blades installed upside down	Remove and replace right side up (page 22)
	Excessive build-up underneath	Check and clean mowing deck

Bradley Mowers Belt Drive with Electric Clutch Parts

Engine Assembly

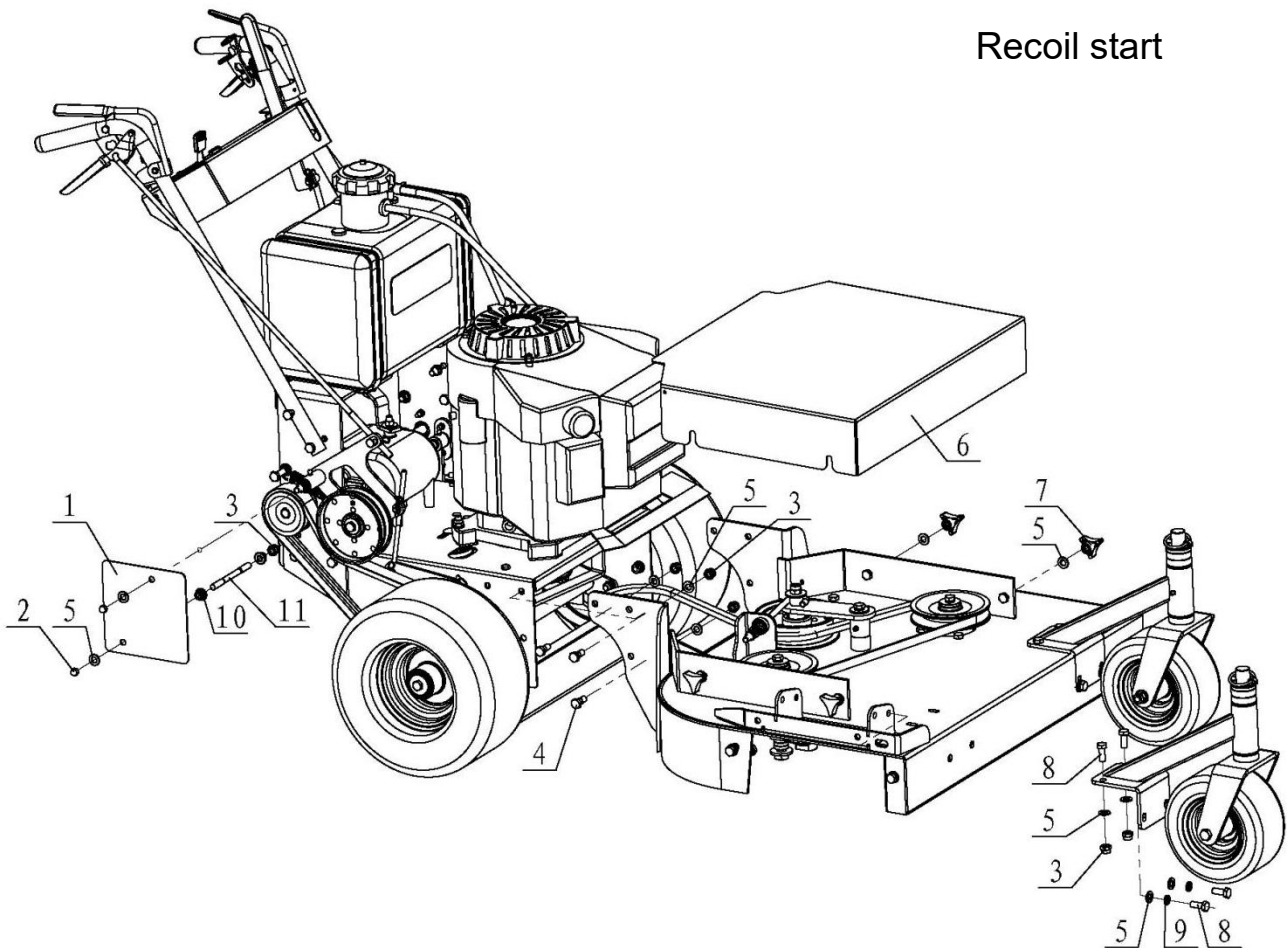


Engine Assembly

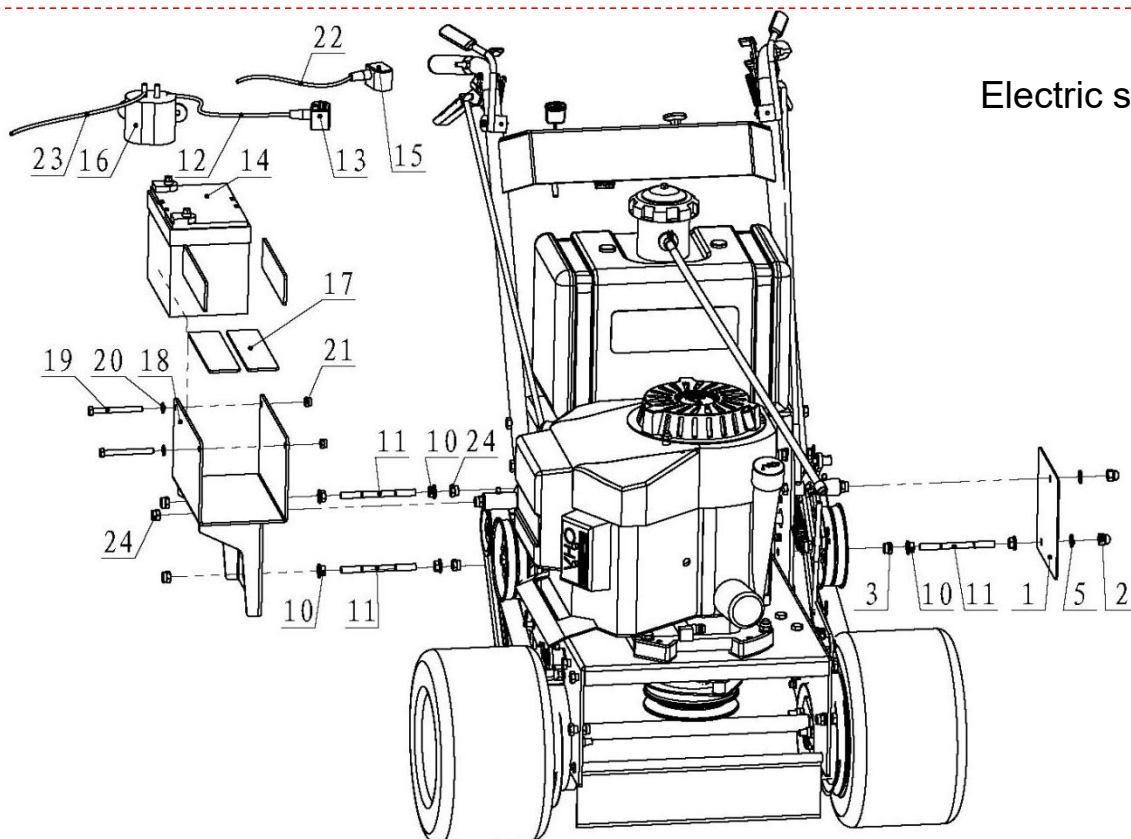
Item No.	Part No.	Description	Qty
1	100C-023	Engine	1
2	100-138	Key C6.35*6*28	1
3	100-099a	Adjust spacer I	1
4	100-137	Single sleeve pulley	1
5	336-235	Large belt wheel adjustment pad	1
6	200-029	Nut flange M8 GB6187	1
7	200-025	Hexagon Bolt M8-1.25x30 GB5783	1
8	100C-022	Clutch (BD)	1
9	601-020	Guide bushing	1
10	200-343	Lock Washer 7/16	1
11	200-050	Bolt 7/16-20 , Engine	1
12	200-006	Nylon nut M10 GB889	4
13	200-010	Plain Washer 10 GB95	7
14	200-052	Hexagon bolt M10-1.5x45 GB5783	4
15	200-021	Plain washer 8 GB95	1
16	601-295	Negative line mounting plate	1
17	600-002-0620	Hexagon Bolt M6-1X20 GB5783	1
18	600-305-0006	Spring Washer 6 GB93	1
19	600-301-0006	Plain Washer 6 GB95	2
20	600-201-0006	Nut M6 GB889	1
21	601-302	Negative line mounting plate assembly	1

Frame Assembly

Recoil start



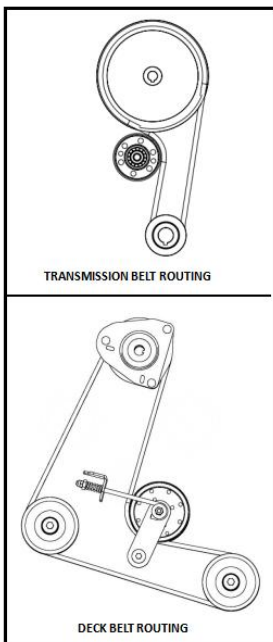
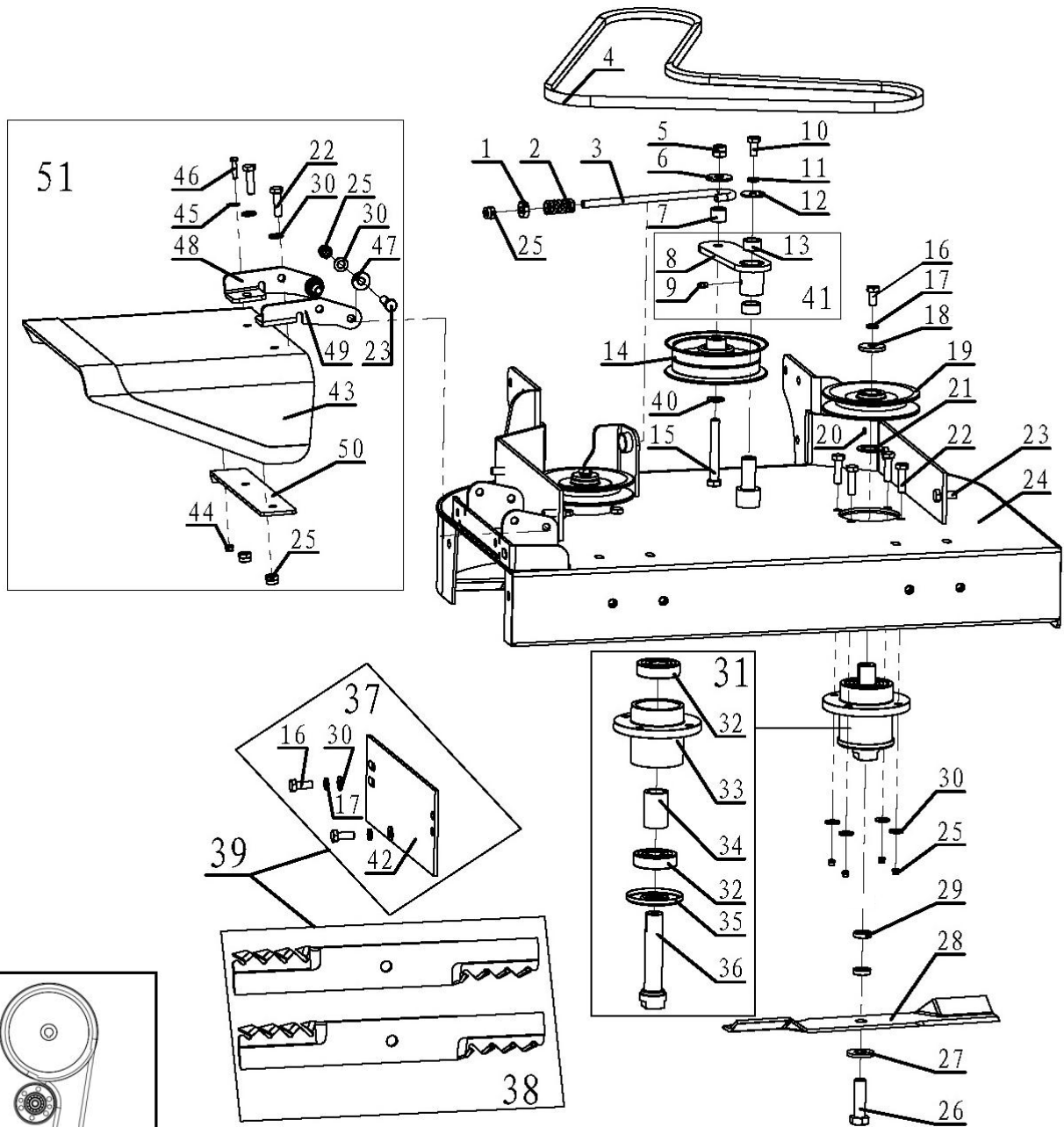
Electric start



Frame Assembly

Item No.	Part No.	Description	Qty
1	100-005	Side baffle	2
2	200-001	Nut M10 GB923-88	4
3	600-201-0010	Nut M10 GB889	12
4	336-173	Connecting bolt	6
5	200-010	Washer10 GB95	22
6	100C-018	Belt wheel cover for 36"	1
	100C-018A	Belt wheel cover for 32"	1
7	100-009A	Saucer Nut	4
8	200-003	Bolt M10-1.5X25 GB5783	8
9	200-031	Lock Washer 10 GB93	4
10	600-202-0010	Nut Flange M10 QC864	6
11	200-002	Double end stud M10-1.5x120 GB901	3
12	100C-026	Positive wiring	1
13	601-223	Red terminal protector	1
14	601-119	Battery SP-30R	1
15	601-222	Black terminal protector	1
16	601-021	Solenoid	1
17	601-116	Rubber Pad	4
18	100C-029	Battery box	1
19	600-001-08155	Bolt M8-1.25X155 GB5782	2
20	600-301-0008	Washer 8 GB95	2
21	600-201-0008	Nut M8 GB889	2
22	100C-027	Battery negative wire	1
23	100C-028	Solenoid wire	1
24	600-205-0010	Nut M10 DIN985	5

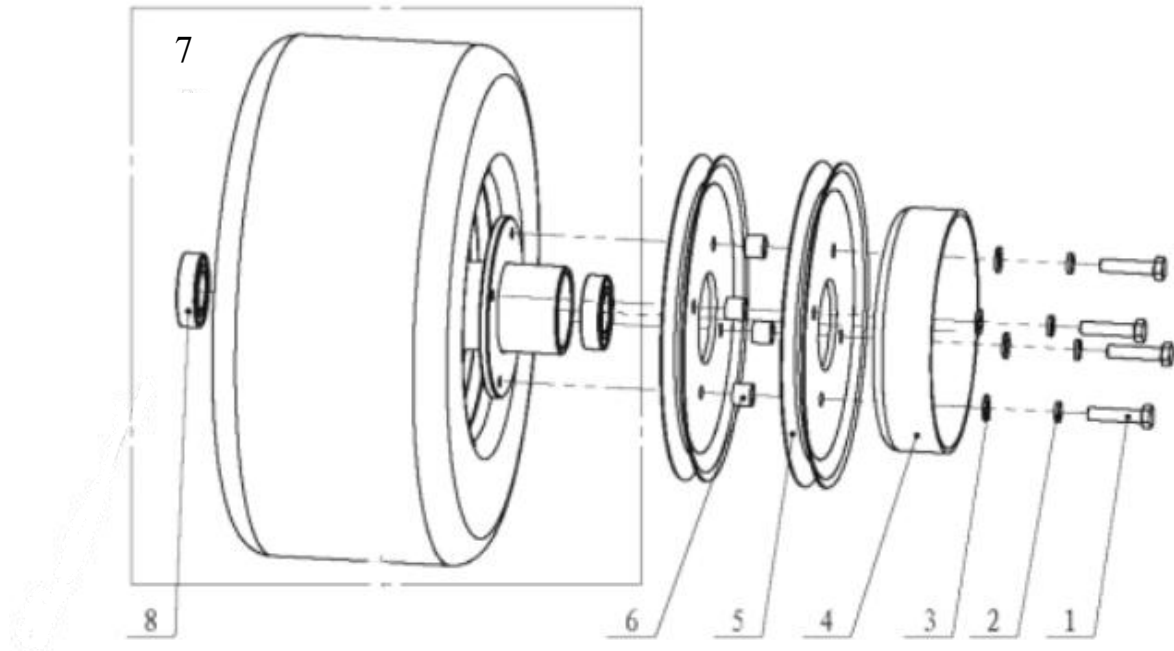
Front Deck Assembly



Front Deck Assembly

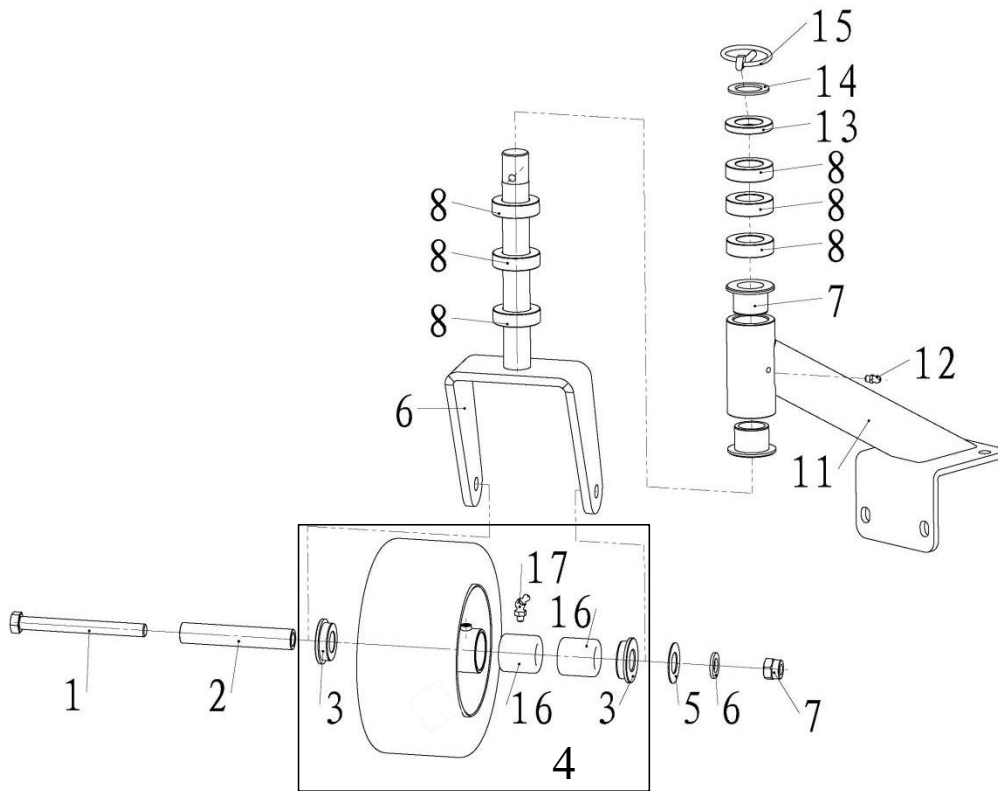
Item No.	Part No.	Description	Qty
1	WM2836-041	Regulate nut	1
2	WM2836-040a	Spring I	1
3	100C-012	Belt engage linkage	1
4	132-004	Deck belt 32"	1
	136-004	Deck belt 36"	1
5	200-007	Nylon Nut M12 GB889	1
6	200-342	Plain washer 12 GB96	1
7	100C-011	linkage bushing	1
8	100C-010	Blade idler arm	1
9	200-026	Grease fitting M6 GB1152	1
10	200-048	Bolt M8-1.25X20GB5783	1
11	200-024	Lock Washer 8 GB 93	1
12	336-227	Spacer	1
13	336-176	Bushing, straight pivot	2
14	601-048	Idler pulley	1
15	200-340	Hexagon bolt M12-1.75X90 GB5782	1
16	200-190	Hexagon bolt M10-1.5X20 GB5783	2
17	200-031	Lock Washer 10 GB93	2
18	601-033	Plain Washer	2
19	601-032	Pulley spindle	2
20	200-341	Key 8x7x25	2
21	336-189	Washer 2x25.5idx38od	2
22	200-018	Hexagon bolt M10-1.5x35 GB5783	10
23	200-003	Hexagon bolt M10-1.5x30 GB5783	6
24	100C-009	Deck weldment 36"	1
	100C-009A	Deck weldment 32"	1
25	200-006	Nylon nut M10 GB889	13
26	601-023	Blade bolt	2
27	600-902-0016	Washer 16DIN	2
28	132-005a	Blade 32"	2
	136-003	Blade 36"	2
29	100-022	Spacer	4
30	200-010	Plain Washer 10 GB95	12
31	100C-013	Cutting housing assembly	2
32	336-255	Bearing 6305	4
33	100C-014	Spindle	2
34	100C-015	Supporting bushing of bearing	2
35	100C-017	Bearing cap	2
36	100C-016	Blade shaft	2
40	600-301-0012	Plain Washer 12 GB95	1
41	100C-010A	Blade idler arm assembly	1
42	336-284	Mulch plate	1
43	336-251	Chute deflector	1
44	600-201-0006	Nylon Nut M6 GB889-86	1
45	600-302-0006	Plain washer 6 GB96-85	1
46	600-002-0625	Hexagon bolt M6-1x25 GB5783	1
47	601-133	Nylon Washer	2
48	601-135	Right Chute Pivot	1
49	601-134	Left Chute Pivot	1
50	336-250	Backing Plate	1
51	100C-024	Rubber chute assembly	1
optional			
37	500-005	Mulch plate component for 36" & 32"	1
38	500-202	2 Mulching blades for 32"	1
	500-203	2 Mulching blades for 36"	1
39	500-002	Mulch kit & 2 mulching blades for 36"	1
	500-009	Mulch kit & 2 mulching blades for 32"	1

Rear Wheel Assembly



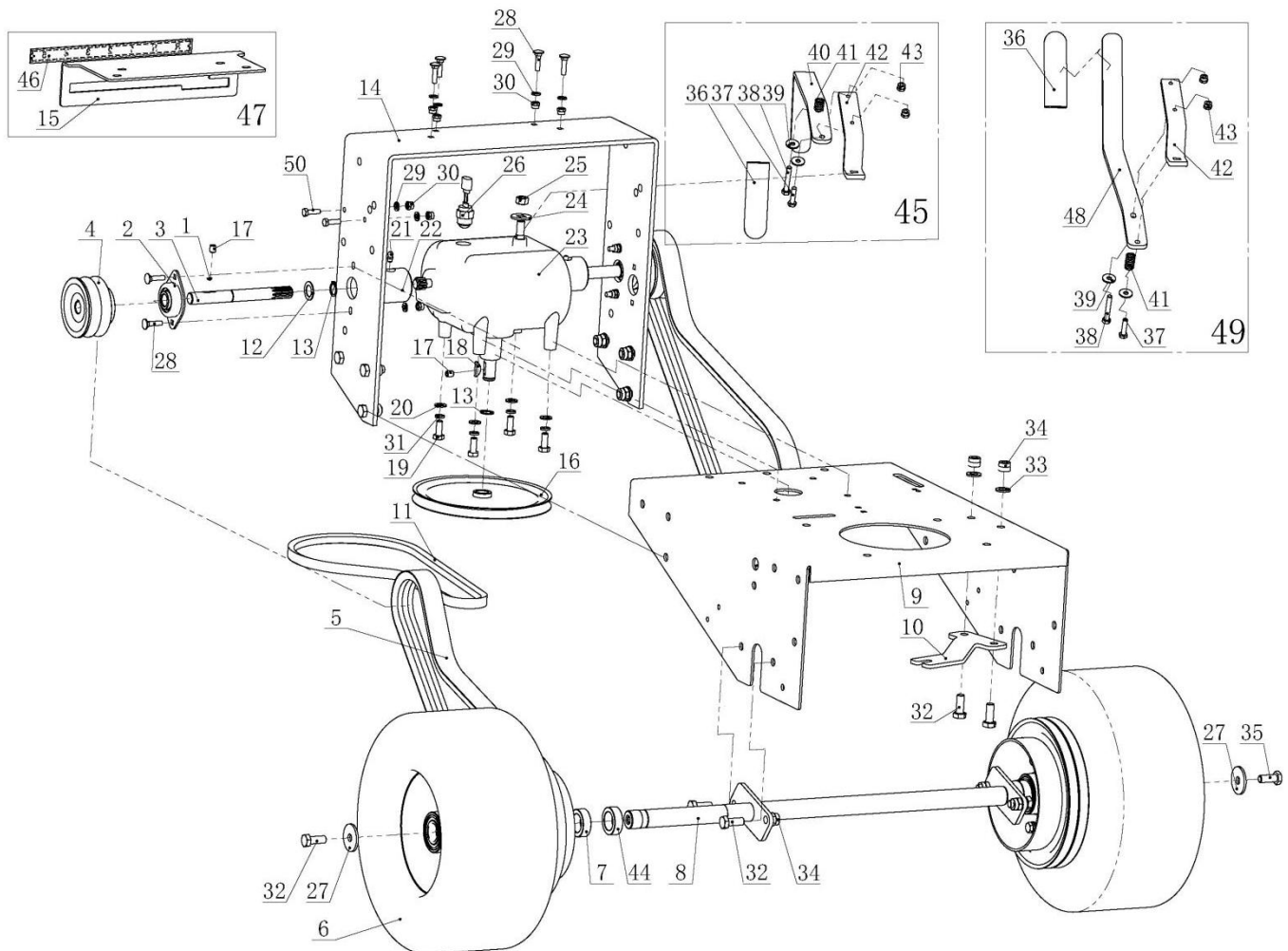
Item No.	Part No.	Name	Qty
1	200-346	Bolt M8-1X35 GB5786	8
2	200-024	Washer 8 GB93	8
3	200-021	Washer 8 GB95	8
4	100-112	Brake hub	2
5	100-110	Traveling sheave	4
6	100-111	Spacer 11.5	8
7	132-008	Rear wheel for 32"	2
	300-019	Rear wheel for 36"	2
8	200-061	Bearing 6005 2RS	4

Front Caster Assembly



Item No.	Part No.	Name	Qty
1	600-001-12140	Bolt M12-1.75X140	1
2	100-093a	Front wheel bushing	1
3	700-158	Front wheel Washer	2
4	100-095a	Front tire assembly	1
5	336-139	Adjust the pad	1
6	200-192	Washer 12 GB96	1
7	200-007	Nut M12 GB889-86	1
8	100-098	Front wheel washer	6
9	100C-019	Front wheel bracket welding part	1
10	100-100	Bush	2
11	100-101aL	Left front wheel bracket welding	1
	100-101aR	Right front wheel bracket welding	1
12	200-026	Grease fitting M6 GB1152	1
13	100-099	Spacer 6.5	1
14	336-236	Front wheel washer	1
15	100-097	Lynch pin	1
16	336-141a	Needle bearing 87411	2
17	200-026a	Grease fitting M6	1

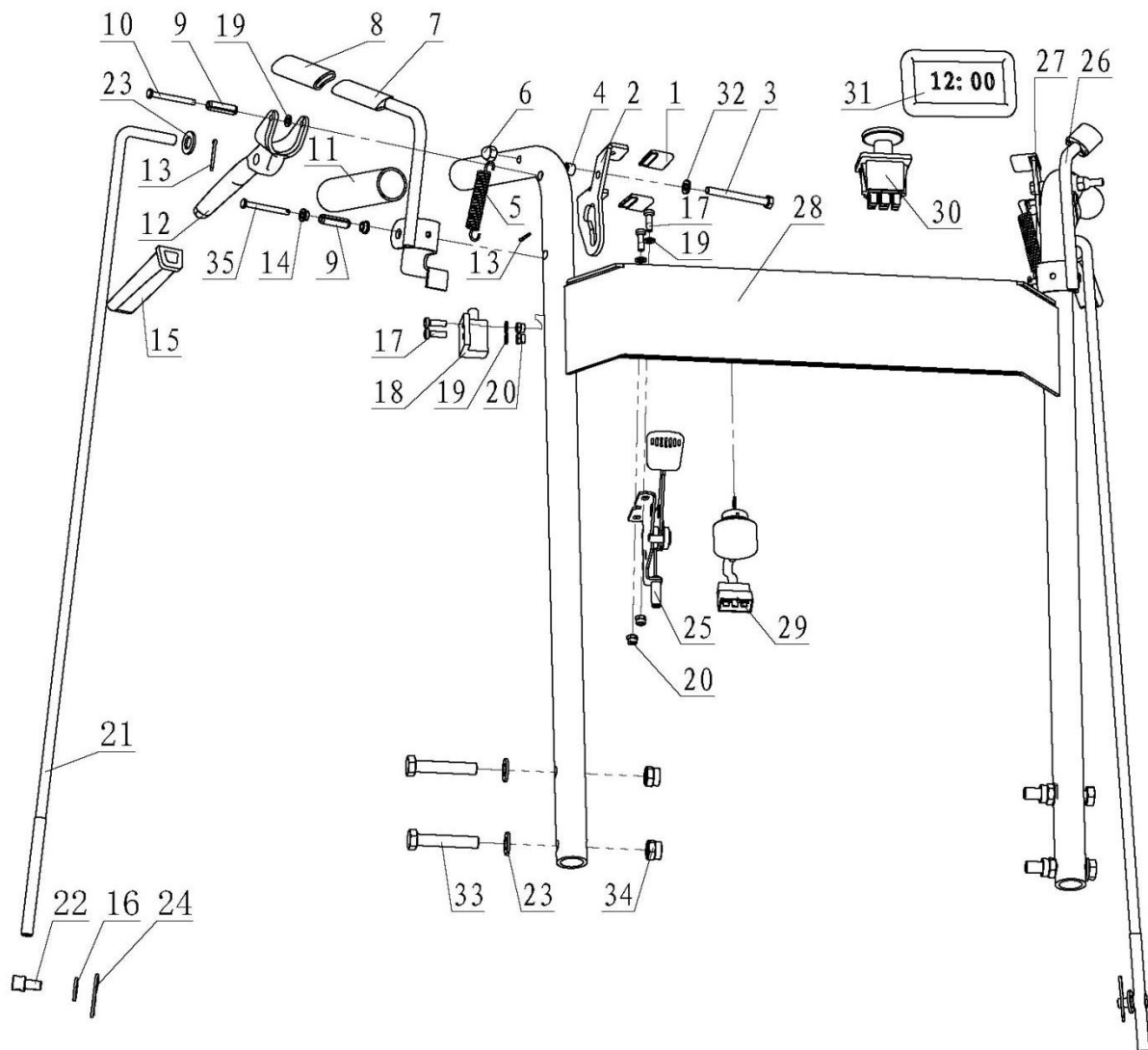
Transmission Assembly



Transmission Assembly

Item No.	Part No.	Description	Qty
1	200-217	key 5.0X7.5X19	2
2	100-049	Flange bearing	2
3	100-053	Output shaft	2
4	100-047	Output pulley	2
5	100-050	Traction Belt for 32" & 36"	2
6	132-009	Rear wheel assembly for 32"	2
	132-009a	Rear wheel assembly for 36"	2
7	100-136	Rear wheel washer for 32"	2
	100-099	Front wheel 6.4 washer for 36"	2
8	100C-008	Axle welding for 32"	1
	100C-008A	Axle welding for 36"	1
9	100-006	Rear deck	1
10	100C-006	Fixing plate of clutch	1
11	100-064	Transmission belt 32" & 36"	1
12	100-133	Block pad	2
13	200-047	Snap ring 16 GB894.1	3
14	100C-004	Gas tank bracket	1
15	100-002a	Speed indicator	1
16	100-063	Pulley, transmission	1
17	200-116	Bolt M8-1.25X8 GB77	3
18	100-117	Transmission key	1
19	200-037	Bolt 5/16-18	4
20	200-021	Plain washer 8 GB95	6
21	200-026	Grease fitting M6 GB1152	2
22	100-054	Coupling	2
23	100-056	Transmission	1
24	100-048	Washer rubber	1
25	200-034	Nut 3/8-24	1
26	100-055	Neutral switch transmission	1
27	100-019	Plain Washer 3*10.5 id *38 od	2
28	200-011a	Bolt M6-1X20 GB801	8
29	200-301	Plain Washer 6 GB95	10
30	200-009	Nylon Nut M6 GB889	10
31	200-024	Lock Washer 8 GB 93	2
32	200-003	Bolt M10-1.5X25 GB5783	7
33	200-010	Washer 10 GB95	4
34	200-006	Nylon Nut M10 GB889	6
35	100-119	Bolt M10 (left)	1
36	100-045	Flat Drip	1
37	200-313	Bolt M6-1X25 GB5783	1
38	200-044	Bolt M6-1X40 GB5782	1
39	200-331	Washer 6 GB96	2
40	100-046	Transmission shift lever upper for 36"	1
41	100-061	Compression spring I	1
42	100-059	Transmission shift lever lower	1
43	200-203	Nut Flange M6	2
44	100-136	Rear wheel washer for 32"	2
	336-236	Front wheel washer for 36"	2
45	100-046B	36" gear change handle	1
46	100-116	Shift plate	1
47	100-142	Gear board	1
48	100-046a	Transmission shift lever upper for 32"	1
49	100-046C	32" gear change handle assembly	1
50	600-002-0620	Bolt M6-1X20 GB5783	2

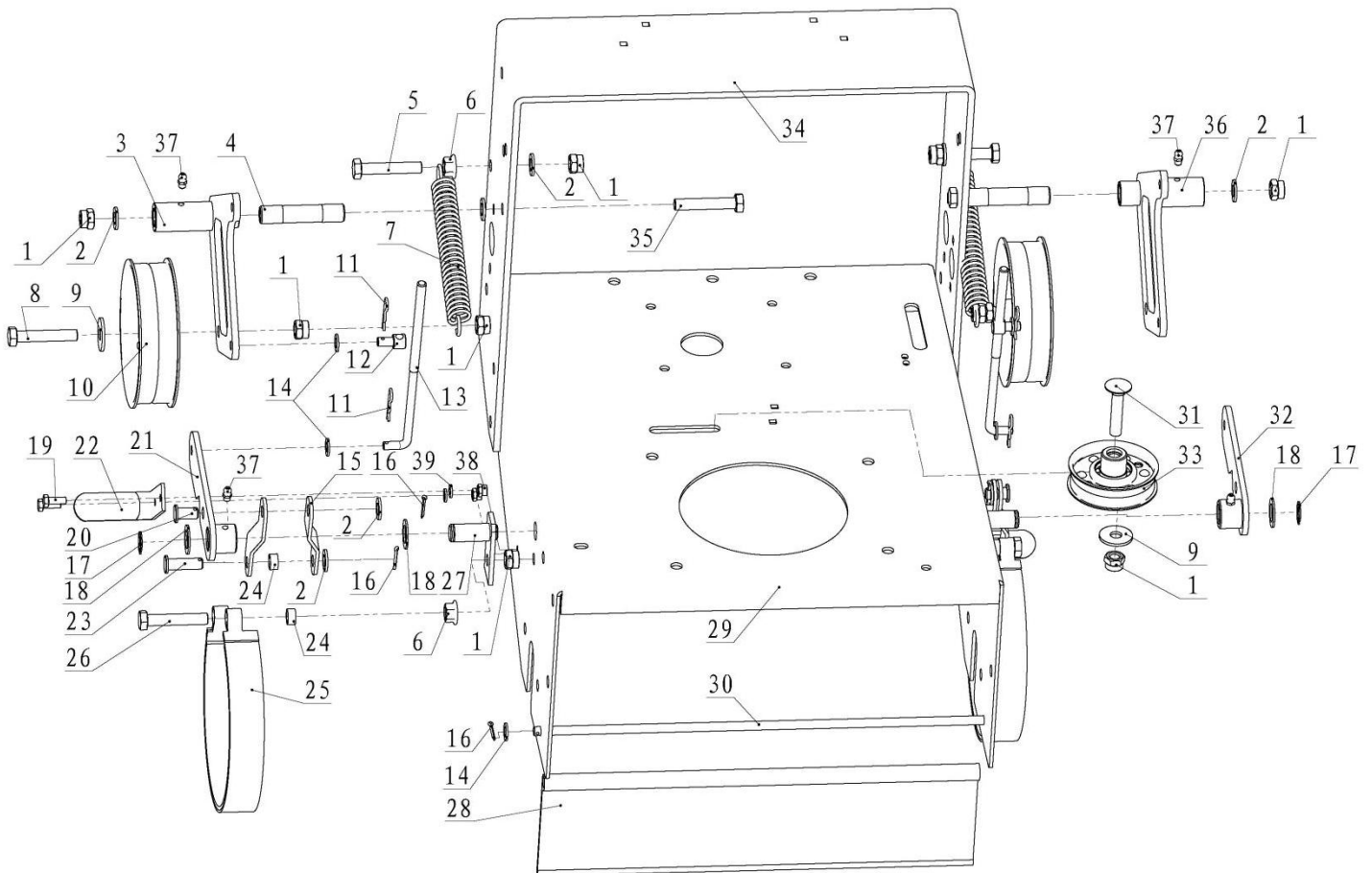
Handle Control Assembly



Handle Control Assembly

Item No.	Part No.	Description	Qty
1	336-150	Rubber sleeve	4
2	100-089	Traction lock with grip RH	1
3	200-327	Hex bolt M6-1X45	2
4	100-087	Bushing, Traction lock	2
5	100-077	Opc spring	2
6	200-051	Nut M6 GB923-88	2
7	100-084	Opc lever RH	1
8	WM2836-056	Traction control lever grip	2
9	100-076	Roll pin	4
10	100-075	Clevis pin traction control lever (45)	2
11	100-072	Handle grip	2
12	100-073	Traction control lever	2
13	200-014	Cotter Pin 2*20 GB91-86	6
14	100-083	Flange bushing	4
15	300-089	Traction control lever grip	2
16	200-021	Plain washer 8 GB95-85	2
17	200-012	Bolt M5-1x16 GB818-85	6
18	336-130a	Switch two way	2
19	200-138	Plain washer 5GB95	8
20	200-013	Nylon Nut M5 GB889-86	6
21	100-074	Traction rod	2
22	100-018	Swivel	2
23	200-010	Plain washer 10 GB95-85	6
24	200-069a	Hair pin cotterΦ2.0	2
25	100-091	Throttle control	1
26	100-085	Opc lever LH	1
27	100-088	Traction lock with Grip LH	1
28	100C-001	Handle welding part	1
29	100-114A	Ignition switch	1
30	601-161	PTO switch	1
31	N110-0100-0071	Hour meter	1
32	600-301-0006	Plain washer 6 GB95-85	2
33	600-001-1050	Bolt M10-1.5X50 GB5782	4
34	200-006	Nylon Nut M10 GB889	4
35	600-301-0006	Clevis Pin Traction Control Lever (42)	2

Rear deck Assembly



Rear deck Assembly

Item No.	Part No.	Description	Qty
1	200-132	Nut M10 GB889	11
2	200-010	Washer 10 GB95	14
3	100-034	Idler arm RH	1
4	100-004	Pivot tube	2
5	200-052	Bolt M10-1.5X45 GB5782	2
6	600-202-0010	Nut Flange M10 QC864	4
7	100-057	Traction spring	2
8	200-022	Bolt M10-1.5X65 GB5782	2
9	200-147	Washer 10 GB96	2
10	100-058	Idler pulley II	2
11	200-069a	Hair Pin CotterΦ2.0	4
12	100-018	Rod connector	2
13	100-036	Brake rod	2
14	200-021	Plain Washer 8 GB95	6
15	100-040	Type Z hing plate	4
16	200-014	Cotter pin 2X20 GB91	6
17	200-047	Snap ring 16 GB894.1	2
18	100-120a	Spacer 1.5*16.5*26.5	4
19	200-120	Bolt M6-1X16 GB5783	4
20	100-043	Flat head rivet II	2
21	100-037	Brake lever RH	1
22	100-051	Belt Guide II	2
23	100-039	Flat Head Rivet I	2
24	100-135	Brake band cushion cover	4
25	100-044	Brake band assembly	2
26	600-001-1055	Bolt M10-1.5X55 GB5782	2
27	100C-003	Turn shaft	2
28	100-011	Safety flap	1
29	100C-005a	Rear chassis	1
30	100-012	Rod safety flap	1
31	200-151a	Cup head square neck bolt M10-1.5X50	1
32	100-038	Brake Lever LH	1
33	100C-007	Pressure roller III assembly	1
34	100C-004	Gas tank bracket	1
35	200-008	Bolt M10-1.5X110 GB5782	2
36	100-035	Idler arm LH	1
37	200-026	Grease fitting M6 GB1152	4
38	200-009	Nylon Nut M6 GB889	4
39	600-301-0006	Plain Washer 6 GB95	4

100C-021



100C-021A



PTO
Pull To Engage
Push To Stop

WARNING
OPEN BELT DRIVE
Stop engine before
reaching underneath

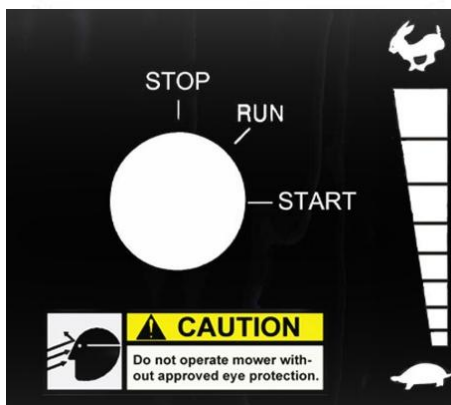
WARNING
DO NOT ADD
FUEL WHILE ENGINE
IS RUNNING

BRADLEY • MOWERS

WARNING
DO NOT ADD
FUEL WHILE ENGINE
IS RUNNING



WARNING
Moving belts and pulleys
can cause serious injury.
Do not operate engine
while shield is removed.



CAUTION

- READ OWNER'S MANUAL BEFORE USE.
- SPECIAL OPERATOR TRAINING REQUIRED.
- CLEAR AREA OF PEOPLE AND DEBRIS BEFORE OPERATING THE MOWER.
- KEEP ALL SHIELDS AND SAFETY DEVICES IN PLACE.
- SHUT OFF ENGINE AND REMOVE KEY WHEN LEAVING THE OPERATOR'S POSITION.
- ALLOW ENGINE TO ADEQUATELY COOL BEFORE REFUELING.
- DO NOT ADD FUEL WHILE ENGINE IS RUNNING.

WARNING

To avoid serious injury or death:

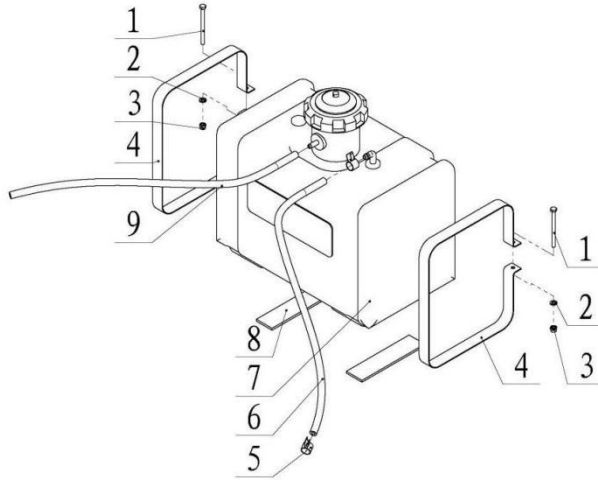
- Push up objects that could be thrown by the blades.
- Do NOT walk when people and parts are in the area.
- Do NOT carry passengers.
- Lock behind and to the side before changing directions.
- Release levers the operator's position.
- Disengage blades.
- Move drive lever out to neutral lock position.
- Engage parking brake.
- Stop engine.

WARNING

To avoid serious injury or death:

- Push up objects that could be thrown by the blades.
- Do NOT walk when people and parts are in the area.
- Do NOT carry passengers.
- Lock behind and to the side before changing directions.
- Release levers the operator's position.
- Disengage blades.
- Move drive lever out to neutral lock position.
- Engage parking brake.
- Stop engine.

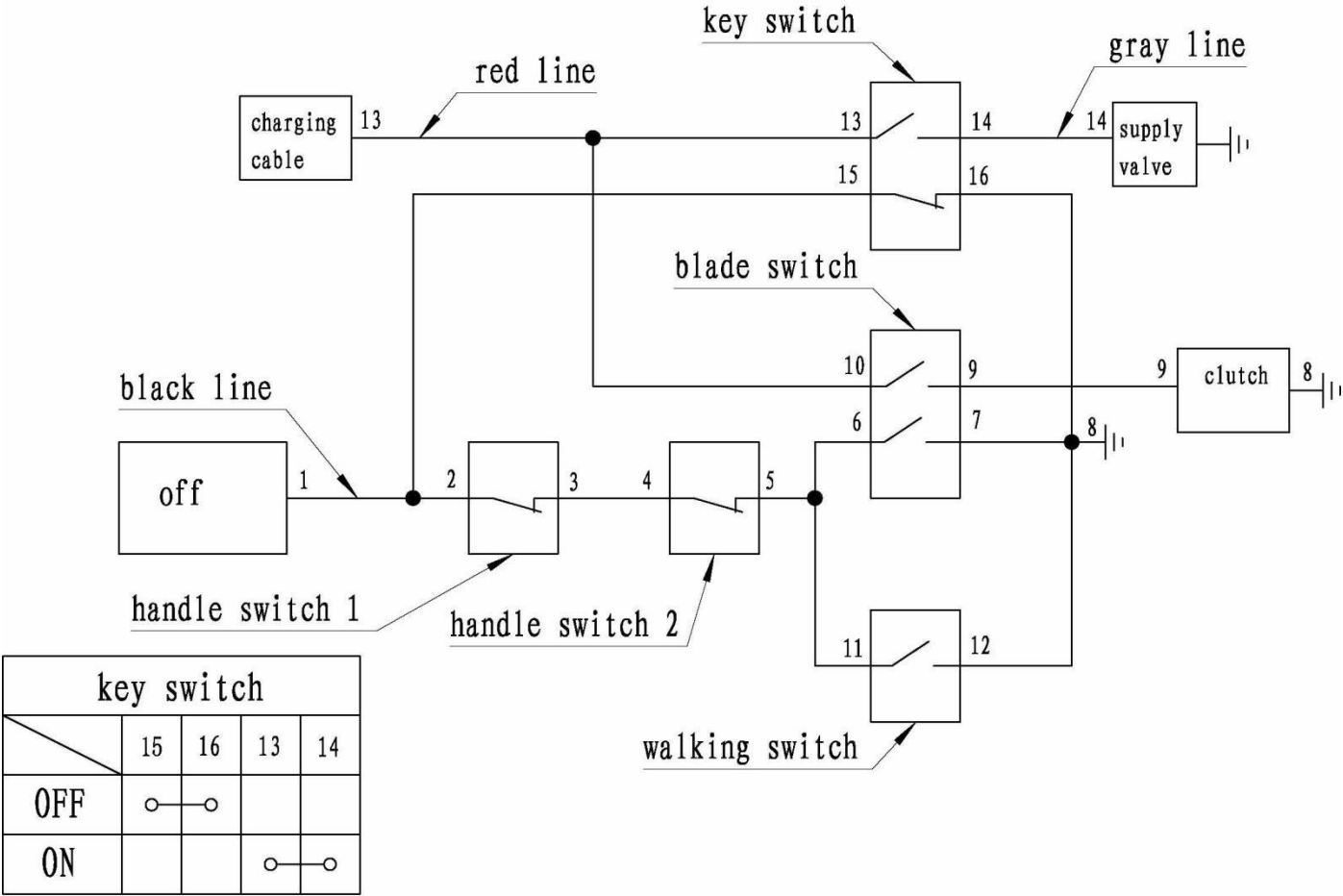
Fuel Tank Assembly



Item No.	Part No.	Description	Qty
1	200-328	Bolt M6-1×75 GB5782	2
2	200-301	Washer 6 GB95	2
3	200-009	Nut M6 GB8899.1	2
4	336-143	Fuel Tank Strap	2
5	601-111	Fuel Line Clamp	2
6	100-106	Gasoline pipe	1
7	WM2836-089	Fuel tank	1
8	100-107	Tank pad	2
9	336-234	Return air	1

ELECTRICAL DIAGRAM (Recoil start)

Item No.	Part No.	Name	Qty
	100C-020	Wiring hamess	1



Bradley Belt-Drive With Electric Clutch Mower Parts



BRADLEY MOWERS PRODUCT REGISTRATION

CUSTOMER INFORMATION

Name: _____

Business Name: _____

Address: _____

City: _____ State: _____ Zip: _____

Phone Number: _____ Fax Number: _____

Email Address: _____

DEALER INFORMATION(place of purchase) *required

Dealer's Name: _____

Dealer's Address: _____

City: _____ State: _____ Zip: _____

Phone Number: _____

(The remaining dealer information will help you get warranty service faster should you need it.)

PRODUCT INFORMATION

Product Name and Model Number: _____

Serial Number: _____

Engine/Motor Brand and Size: _____

Engine Serial Number: _____

Engines hydraulic pumps, and batteries are warranted through their respective manufacturers. Please contact the manufacturer for more details.

Signature _____ Date of Purchase: _____

KEEP YOUR RECEIPT WITH A COPY OF THIS REGISTRATION FORM

Mail your completed form to:
Havener Enterprises, Inc.
368 S. Michigan Ave.
Bradley, IL 60915

Email your completed form to;
info@bradleymowers.com

Fax your completed form to:
888.785.1348

Complete your registration form online at www.bradleymowers.com

Warranties should be performed by an authorized Bradley Mowers dealer. All other warranty service requires prior approval.

Your product warranty is only valid if this file is completed signed, and returned to Havener Enterprises, Inc. within two weeks of product purchase. See the warranty statement for more details.

Your information may be collected but never shared outside of Havener Enterprise, Inc. and its subsidiaries